

Women's Basketball Coaches Association



# ANNUAL REPORT

**2024-25 Association Year**

---

# TABLE OF CONTENTS

Introduction.....	3
Beliefs.....	4
Leadership.....	5
Membership.....	7
Finances.....	8
Events.....	9
Mentoring.....	13
Actions.....	14
Social Media .....	15
Awards.....	16

# INTRODUCTION

Dear member,

We are pleased to present you with this annual report for the 2024-25 association year. The report summarizes the WBCA's status and activities from Sept. 1, 2024, through Aug. 31, 2025.

It was a year of historic firsts!

Teams competing in the 2025 NCAA Division I Women's Basketball Championship, for the first time, earned "units" from newly implemented participation and performance funds. The addition of "units" to DI women's basketball is a significant gender equity milestone that now ensures that teams participating in the NCAA Tournament, like their counterparts on the men's side, are finally recognized and rewarded financially for their success. Your WBCA has been a staunch advocate for this.

The WBCA, for the first time, organized and held its first-ever intercollegiate competition — the WBCA Showcase — a three-day event that combined a four-team MTE with a non-conference doubleheader and marked the return of college women's basketball to ESPN Wide World of Sports at Walt Disney World Resort. The WBCA's foray into the competitive event space represents the association's newest effort to expand the WBCA brand, tell our story, and develop new revenue streams within the scope of its mission to serve coaches and grow the game.


Both firsts represent major achievements by the WBCA!

Like those of you whom we serve, the WBCA also continues to anticipate, adapt to, and evolve with the changing landscape of intercollegiate athletics. We began to welcome members hired into newly established roles in college women's basketball — general managers — and will begin including programming for them at the 2026 WBCA Convention. Because the game is now exploding at the pro level, the WBCA Board of Directors established a new WNBA board position which will help us grow our professional coach membership and build new "pro level" services for all members. We also continue to keep you informed on the latest news with regard to NIL and the transfer portal.

Back to discussing "firsts," we want to see you at the 2026 WBCA Convention in Phoenix — a first-time host for the WBCA Convention and Women's Final Four. We are excited to bring our programming to the west. We are working diligently on building a curriculum that will help you grow, develop, network and gain "take-aways" to help you advance your career.

Thank you for being a coach in our great sport and for leading, teaching and mentoring the women and girls who play it. Thank you for being a member and for your continuing support.

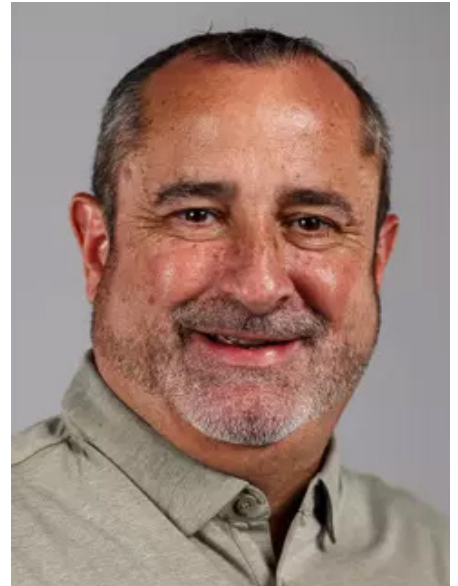
Best regards,



Jose Fernandez  
President



Danielle Donehew  
Executive Director



**Jose Fernandez**



**Danielle Donehew**

# BELIEFS

Our mission, vision, values and objectives define who we are and aspire to be, why we exist, what we believe, and what we do. Our code of ethics establishes standards of professional conduct and our expectations of each other and ourselves.

## Our Mission

The WBCA leads, serves and unites coaches of women's basketball for the good of our game and those who play it.



## Our Vision

Every coach of women's basketball looks to the WBCA for the support they need to succeed professionally, grow the game, and inspire players to realize their full potential.



## Our Values

Member coaches are stewards of the game, conducting themselves with professionalism and integrity, and putting foremost the safety, welfare and educational interests of the women and girls they coach. The WBCA membership, board of directors and staff conduct themselves in such a manner that the women and girls who play basketball gain self-respect, self-esteem and self-confidence, as well as educational development. These qualities empower women and girls to succeed in life and to become leaders in their professions, communities and society.



## Our Objectives

- We follow both the letter and spirit of the rules and regulations that govern our sport.
- We inform, advise and guide coaches on matters that impact their profession and their sport.
- We offer networking opportunities that allow coaches to connect, encourage and mentor each other.
- We provide educational programming that enables coaches to make themselves better leaders, teachers and role models for the athletes they coach, and improve the quality and popularity of the game.
- We recognize coaches, as well as their athletes and their teams, who excel athletically and academically each year, and honor those who have made lasting contributions to the profession and sport throughout their career.
- We act as the unifying voice of coaches to the organizations that govern the sport at its various levels of competition.



## Code of Ethics

Members conduct themselves professionally, according to the rules, and with civility to players, administrators, game officials, fans and each other. All members must adhere to these ethical and behavioral standards.

### INTEGRITY

- We follow both the letter and spirit of the rules and regulations that govern our sport.
- We watch for actions that could influence other coaches, staff members, athletes and fans to behave in a way that is contrary to these standards.
- We report conduct or suspected conduct that is not in keeping with these standards as well as the rules and regulations that govern our sport.
- We acknowledge that winning is important, but never at the expense of sportsmanship, safety and integrity.

### ATHLETE EXPERIENCE

- We place the physical and mental well-being of the women and girls who play basketball above all else; their health and safety is paramount.
- We maintain strictly professional relationships with the athletes with whom we interact.
- We respect the dignity and individuality of each person with whom we interact and promote a diverse and inclusive culture in which every individual is valued.

### EDUCATION AND EMPOWERMENT

- We teach by example and instill in our athletes the fundamental values of honesty, integrity, respect, civility, self-discipline, personal responsibility and fairness.
- We educate women and girls in a manner that prepares them to succeed in life and become leaders in their communities.
- We strive in all we do to expand athlete experiences and support their academic and educational interests.

### PROFESSIONALISM

- We perform with excellence and good sportsmanship and require the same of each other and our athletes.
- We commit to growing and enhancing the sport of women's basketball and seek opportunities to grow personally and professionally.
- We respect the game, fellow coaches, administrators, game officials and the women and girls we coach and teach.
- We conduct ourselves according to the WBCA values and standards and are accountable for our decisions and actions.

# LEADERSHIP

The WBCA is governed by a board of directors composed of 25 officers and directors – 18 of whom are coaches – and several nonvoting consultants to the board who represent strategic partners or have expertise in areas of importance to the profession and the sport. The board selects its own members and, with the exception of the secretary and the treasurer, elects officers from among the sitting directors.

## Board of Directors



Courtney Banghart  
Head Coach  
North Carolina  
Past President



Kelly Barsky  
Director of Athletics  
UC Santa Barbara  
Athletic Administrators



Danelle Bishop  
Head Coach  
Cal Poly Pomona  
NCAA Division II



Kelly Black-Holmes  
Assoc. General Counsel  
Warner Bros. Discovery  
Public Sector



Anthony Bozzella  
Head Coach  
Seton Hall  
NCAA Division I



Shawn Chaffin  
Head Coach  
Indiana East  
NAIA



Danielle Donehew  
Executive Director  
WBCA  
Secretary



Jose Fernandez  
Head Coach  
South Florida  
President



Rob Higgins  
Executive Director  
Tampa Bay Sports Comm  
Public Sector



Gene Hill  
Head Coach  
Georgia State  
NCAA Division I



Misha Jackson  
Head Coach  
Emory  
NCAA Division III



Romeo Lagmay  
Head Coach  
Taft  
Two-Year College



Katherine Menendez  
Head Coach  
Colorado College  
NCAA Division III



Teri Moren  
Head Coach  
Indiana  
NCAA Division I



Danielle O'Banion  
Head Coach  
Loyola, MD  
NCAA Division I



Cheytoria Penny  
Director of Finance  
Emory  
Treasurer



Julie Roe Lach  
Commissioner  
Horizon League  
DI Commissioners



Carissa Sain  
Head Coach  
Illinois Tech  
NCAA Division III



Karen Self  
Head Coach  
Seton Catholic Prep  
Scholastic



Dave Slifer  
Head Coach  
Central Missouri  
NCAA Division II



Charmin Smith  
Head Coach  
California  
NCAA Division I



Joni Taylor  
Head Coach  
Texas A&M  
Vice President



Cleve Wright  
Head Coach  
Gannon  
NCAA Division II



Steve Yang  
Assistant Coach  
Stephen F. Austin  
Assistant Coaches



Carol Callan<sup>NV</sup>  
Board Member  
FIBA Americas



Liz Hollingworth<sup>NV</sup>  
Professor, Iowa  
Faculty Athletic  
Representatives



Lynn Holzman<sup>NV</sup>  
Vice President of  
Women's Basketball  
NCAA



Mike Neighbors<sup>NV</sup>  
Assistant Coach  
Los Angeles Sparks  
WNBA

NV–Non-voting member

# LEADERSHIP

The board of directors employs an executive director who manages the day-to-day affairs of the association. The executive director also serves as the association's secretary and is a member of the board and executive committee. The executive director employs and contracts with a team of professionals in their respective fields of expertise to assist with the administration of the association's programs and initiatives.

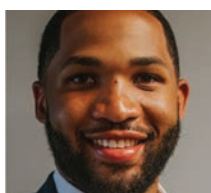
## WBCA Team



Danielle Donehew  
Executive Director



Mary Ellen Gillespie  
Deputy Director



Marcellus Barksdale  
Senior Manager  
Learfield



Shayla Black  
Manager of Membership  
Associations International



Abby Davis  
Events Manager  
Associations International



Ellie Mackay Tangen  
Dir. of Membership  
and Ticket Sales



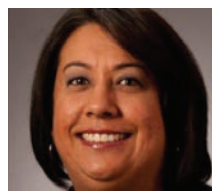
Darryl Morton  
General Manager  
Learfield



Jessica Ramberg  
Director of Content  
and Digital Marketing



Dana Refling  
Executive Assistant



Daniella Trujillo  
Director of  
Operations



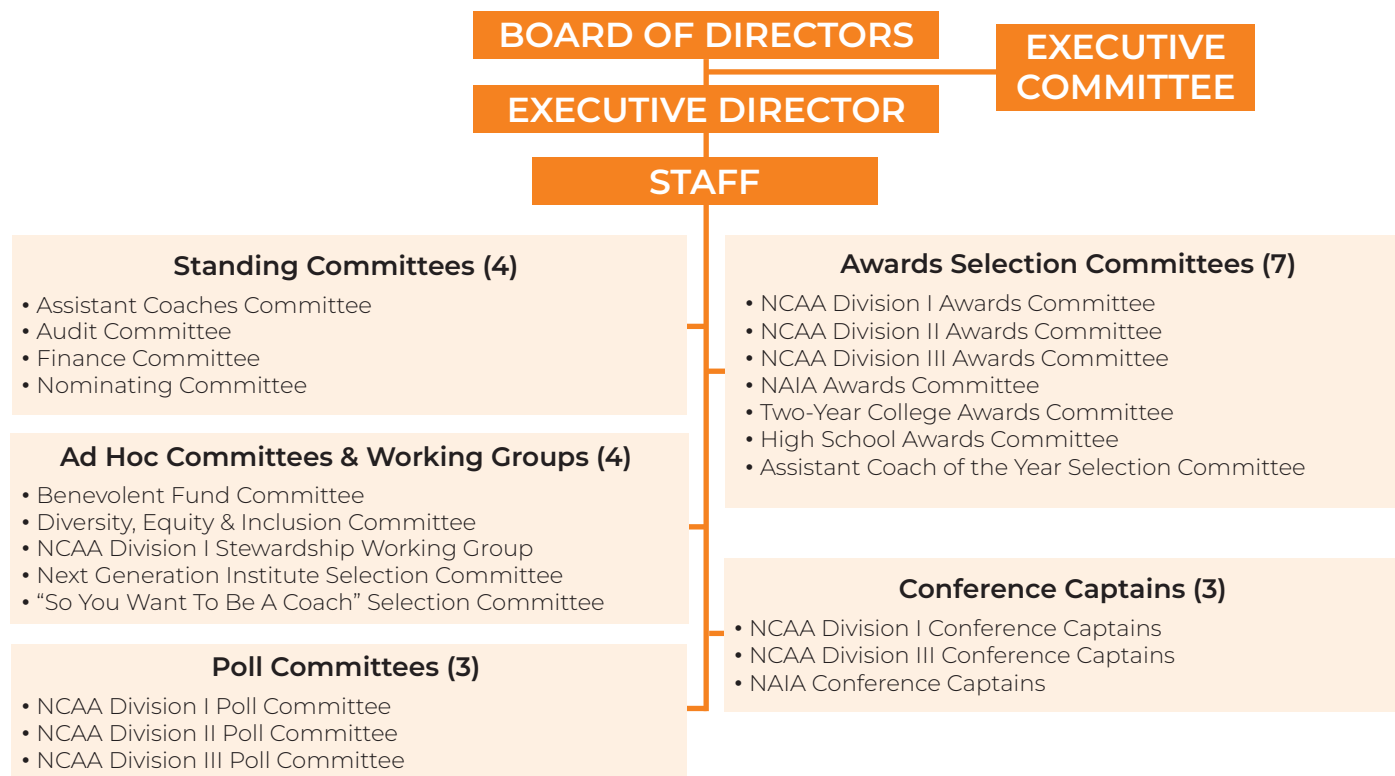
Jess Turner  
Division III All-Star  
Game/Special Projects



Jack Watford  
Director of  
Communications

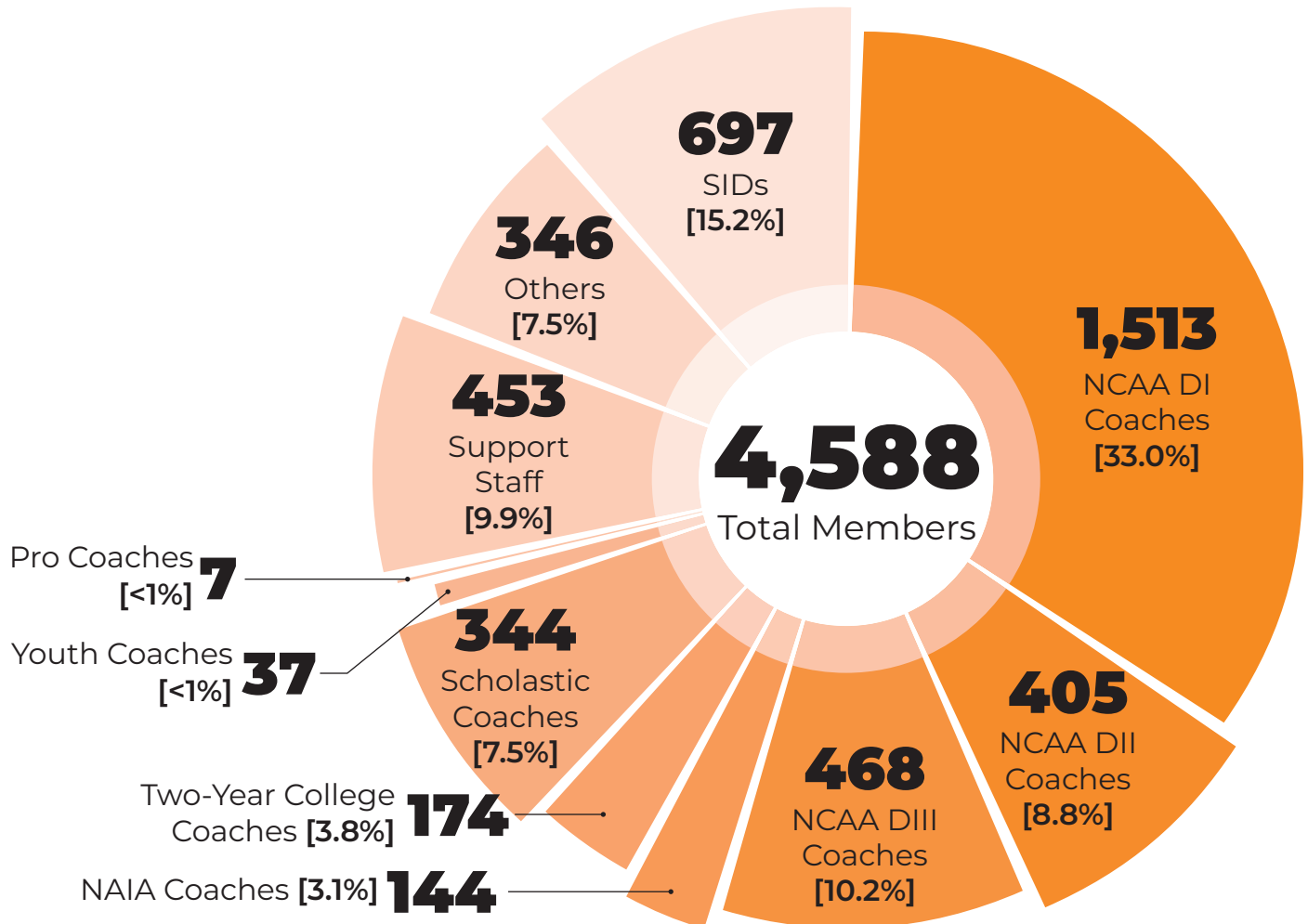
Susan Bangs, CPA/Accountant | Dan Gale, Advisor | James Hill, NCAA Division II/III Coaches Poll Coordinator | Ann Schildhammer, Legal Counsel

## Organizational Structure



# MEMBERSHIP

WBCA membership during the 2024-25 association year was 4,588. Membership is composed of active coaches at the professional, collegiate, scholastic and non-scholastic youth levels, as well as administrators, non-coach staff, sports information directors, inactive and retired coaches, and supporters of the profession and the sport.



NOTE: Coaches include directors of basketball operations. Scholastic coaches include high school, junior high school, middle school and elementary school. Youth coaches include AAU and club. Support staff includes ADs, SWAs, videographers, grad assistants, managers, etc. Others includes international, inactive, retired coaches; business, strategic partners; athletes, fans, media, etc. SIDs include sports information directors who are registered for membership by their institution's head coach.

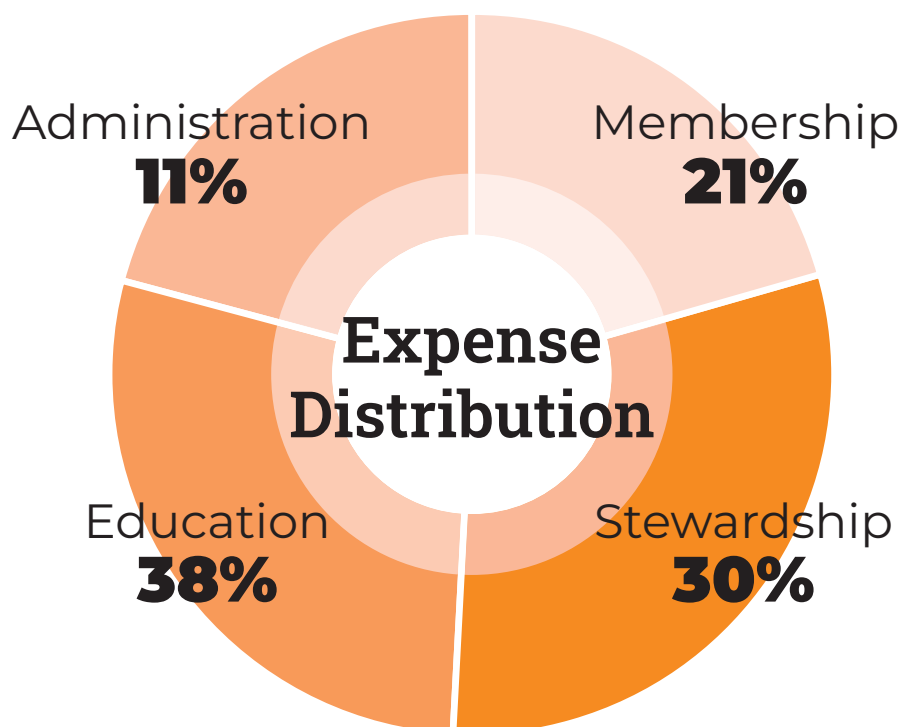
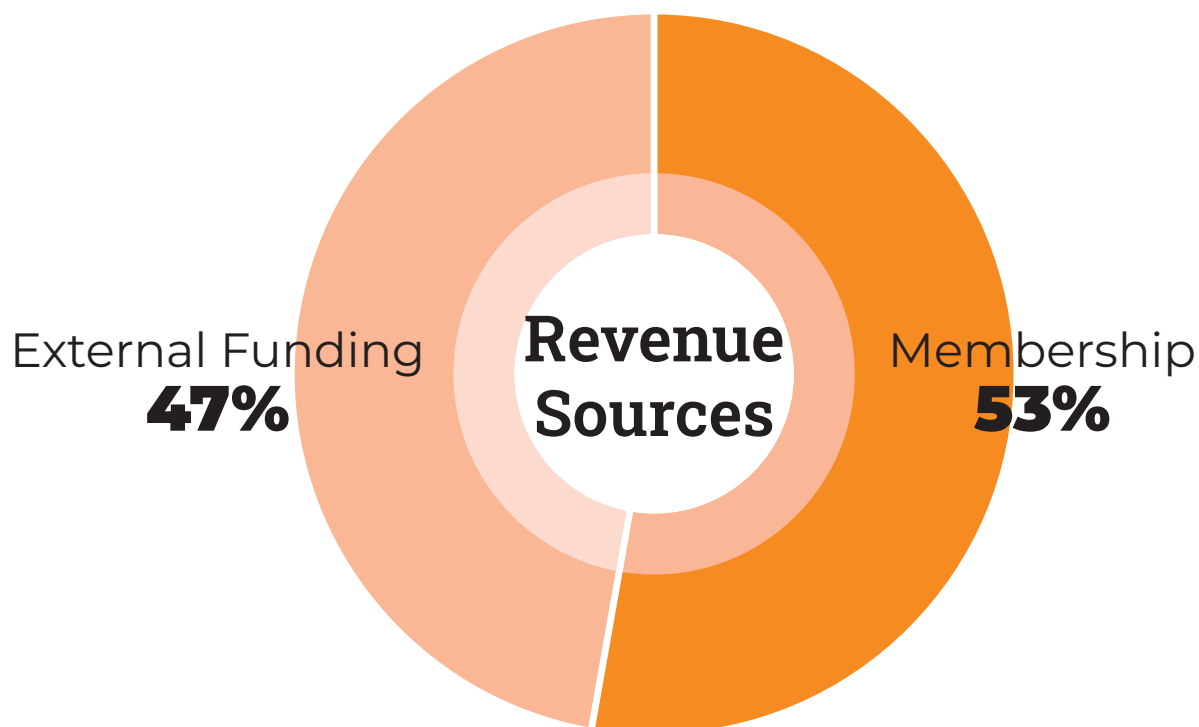
## 10-Year Trend

Year	Members	Year	Members
2024-25	4,558	2019-20	4,252
2023-24	4,062	2018-19	4,613
2022-23	3,833	2017-18	4,273
2021-22*	3,547	2016-17	4,226
2020-21*	3,243	2015-16	3,957

\*-pandemic year

# FINANCES

The association generates revenue through several vehicles. These include membership dues, convention registration fees, exhibitor fees and commissions, corporate sponsorships, broadcasts and philanthropic gifts.



# EVENTS

## WBCA CONVENTION



Photo by Jess Ramberg



Photo by Jess Ramberg

### Convention Attendance

Year	Attendance	Location
2025	2,668	Tampa
2024	2,258	Cleveland
2023	2,583	Dallas
2022	2,242	Minneapolis
2019	2,927	Tampa
2018	2,357	Columbus
2017	2,475	Dallas
2016	2,197	Indianapolis
2015	2,124	Tampa
2014	2,383	Nashville

\*-2020, 2021 conventions canceled due to COVID-19.



The 2025 WBCA Convention offered the 2,668 members who attended almost 37 hours of educational programming in addition to divisional business meetings and the always-popular welcome party. More than 81% of the attendees responding to the post-event survey said they were satisfied to very satisfied with their overall convention experience and found the educational programming to be relevant. Almost 70% of them said they planned to attend the 2026 convention in Phoenix.



Photo by Jess Ramberg



Photo by Jess Ramberg

# EVENTS

## WBCA SHOWCASE



Jess Ramberg/WBCA

Louisville's Jayda Curry and USF's Sammie Puisis join Mickey Mouse at center court for a ceremonial toss during the inaugural WBCA Showcase in State Farm Arena at ESPN Wide World of Sports Complex at Walt Disney World Resort in Florida.

### 2024 SCOREBOARD

#### Thursday, Nov. 21

Georgia 60  
Tulsa 44

Penn State 74  
Marshall 59

#### Saturday, Nov. 23

Marshall 84  
Tulsa 80 OT

Penn State 67  
Georgia 47

#### Sunday, Nov. 24

Louisville 84  
South Florida 60

Mississippi State 80  
Jacksonville 35



The inaugural WBCA State Farm Showcase was held Nov. 21, 23 and 24 at ESPN Wide World of Sports Complex at Walt Disney World Resort in Florida. It marked the WBCA's first venture into the competitive space as a vehicle to expand the WBCA brand and tell our story.

The event offered NCAA Division I teams a new neutral site opportunity with a first-class experience and increased exposure for the sport.

Georgia, Marshall, Penn State and Tulsa participated in a four-team MTE on Nov. 21 and 23. Jacksonville, Louisville, Mississippi State and South Florida played in a bonus doubleheader on Nov. 23.

All games were streamed live on NBC Sports FAST Channel.

On June 24, 2025, the WBCA announced the field of teams for the second annual WBCA Showcase which again will be played at ESPN Wide World of Sports Complex.

Baylor, Davidson, Iowa and Miami will play in the four-team MTE on Nov. 20 & 22, 2025. Central Missouri and West Florida will play in an NCAA Division II bonus game on Nov. 21. Missouri and Washington State will face off in a Division I bonus game on Nov. 23.

# EVENTS

## WBCA CHALLENGE



WNBA Las Vegas Aces

The inaugural WBCA Challenge college women's basketball event will be played in Michelob ULTRA Arena, home of the WNBA's Las Vegas Aces.

The WBCA announced that the WBCA Challenge, the association's second venture into the competitive space, will be held Nov. 13 and 15, 2025, at Michelob ULTRA Arena in Las Vegas.

Fairfield, North Carolina, South Florida and UCLA were also announced as the teams competing in the inaugural event.

"The WBCA is proud to announce the WBCA Challenge! This exciting new college women's basketball event will be held at Michelob ULTRA Arena which is home to the WNBA's Las Vegas Aces," said WBCA Executive Director Danielle Donehew. "The four participating teams in the inaugural event – Fairfield, North Carolina, UCLA and USF – will offer fans four outstanding games over two days and will further contribute to our sport's growing popularity."



### 2025 MATCHUPS

#### Thursday, Nov. 13

Fairfield vs. South Florida  
North Carolina vs. UCLA

#### Saturday, Nov. 15

Fairfield vs. North Carolina  
South Florida vs. UCLA

# EVENTS

## 2025 NCAA DIVISION III ALL-STAR GAME



The 2025 NCAA Division III Women's Collegiate All-stars and coaches.

### 2025 All-Star Team Rosters

#### Team Jeffers

Heaven Figueroa, Lehman College  
Abby Gress, University of Rochester  
Lilly Hedge, Western New England University  
Rhe Nae Leach, Whittier College  
Madison Medbury, Rhode Island College  
Catherine Or, Carnegie Mellon University  
Kasey Schipfer, Ohio Wesleyan University  
Alexa Thomson, University of Wisconsin-Stevens Point  
Sidney Tomasso, St. John Fisher University  
Sidney Wagner, Trine University  
Coach: Dixie Jeffers, Capital University (retired)

#### Team LaHaye

Grace Bezold, Hanover College  
Haley Franklin, Millsaps College  
Arianna Gerig, Williams College  
Terese Greene, Shenandoah University  
Reese Harden, Messiah University  
Lauren Huber, Illinois Wesleyan University  
Catherine Kagey, Randolph-Macon College  
Cam Lexow, Gallaudet University  
Summer McNulty, Elizabethtown College  
Olivia Rangel, Carroll University  
Coach: Carroll LaHaye, Randolph-Macon College (retired)

Team Jeffers defeated Team LaHaye, 66-59, in the 2025 NCAA Division III Women's Collegiate All-Star Game presented by the WBCA on March 22, 2025. The all-star game preceded the NCAA Division III National Championship Game at the Cregger Center on the campus of Roanoke College in Salem, Virginia.

Lilly Hedge of Western New England led Team Jeffers with 15 points. She was joined in double figures by teammates Catherine Or of Carnegie Mellon with 13 points and Alexa Thomson of UW-Stevens Point with 10.

Lauren Huber of Illinois Wesleyan led Team LaHaye in scoring with 13 points and rebounding with 14 boards. Also scoring in double figures for Team LaHaye were Terese Greene of Shenandoah and Olivia Rangel of Carroll with 12 and 11 points respectively.



# MENTORING

In addition to the organic networking opportunities that occur during its yearly convention, the WBCA continues to connect members with each other through virtual programs such as the Coach to Coach Mentoring Program and the Beyond the Box peer-to-peer program, as well as the popular in-person Mentoring Madness session during convention.

## Coach to Coach Mentoring Program



Established 2015

Launched during the 2015-16 membership year, the Coach to Coach Mentoring Program is a traditional, small-group mentoring program designed to bring coaches and staffs together during the basketball season to share ideas, confront challenges and learn from each other's experiences. The program provides a structured platform – monthly conference calls – for organic, open conversation between experienced coaches (who serve as mentors) and those who have recently began their coaching journeys (mentees).

### 2024-25 Association Year Participation

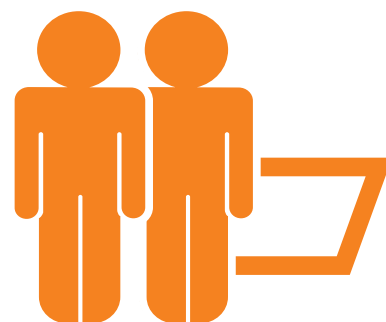
- Mentors: 34
- Mentees: 144
- Total participants: 178

## Beyond the Box Peer-to-Peer Program

The WBCA launched the Beyond the Box peer-to-peer program during the 2019-20 membership year for the benefit of seasoned coaches with three or more years of experience in their current roles. Coaches are paired with others at the same level (e.g., head coach with other head coaches, assistant coach with other assistant coaches, etc.) to connect and discuss things such as difficult situations, personal interest topics, coaching journeys and X's and O's.

### 2024-25 Association Year Participation

- Facilitators: 21
- Participants: 104
- Total participants: 125



## Mentoring Madness Session

First held during the 2016 WBCA Convention, Mentoring Madness is an in-person, fast-paced, small-group mentoring session. Participants rotate from table to table for 20-minute mini sessions during which they discuss pertinent issues with a variety of head coaches. The experience helps to build everyone's professional network and opens the door to a convention full of brainstorming and sharing.



**MENTORING  
MADNESS**

### 2025 Convention Participation

- Mentors: 40
- Participants: 210
- Total participants: 250

# ACTIONS

## PROGRAMS & INITIATIVES

### ADVOCACY & GOVERNANCE

The WBCA continued to serve as the unified voice of member coaches to governing bodies of the sport during the 2024-25 association year, advocating successfully for legislative proposals supported by NCAA Division I coaches:

- The NCAA implemented participation and performance funds (also known as units) for the NCAA Division I Women's Basketball Championship. The 68 teams participating in the 2025 tournament became the first to earn units.
- The NCAA extended blanket waivers allowing student managers to also serve as male practice players and exempting elite-level events from the 10 days coaches may recruit internationally during June, July and August.
- The NCAA approved the following modifications to the Division I recruiting calendar:
  - Converted the Tuesday before the June scholastic evaluation period from a dead period to a quiet period effective for June 2026.
  - Moved the second July nonscholastic evaluation period to the last weekend of the month to provide an off week between the two evaluation periods that month effective for July 2026.
  - Moved the April nonscholastic evaluation period to the last weekend of the month effective for April 2027.



### EDUCATION & PROFESSIONAL DEVELOPMENT



Established 2023

The Next Generation Institute welcomed a 32-member class to the two-day program held during the 2025 WBCA Convention in Tampa. Launched in 2023, NGI is the association's newest educational program. NGI is for experienced associate/assistant coaches who aspire to become a head coach at the NCAA Division I, II or III levels. The program consists of a curriculum that focuses on the CEO attributes a modern-day head coach needs to lead a program and be a problem-solver in today's ever-changing landscape of higher education and the enterprise of intercollegiate athletics.

A class of 80 attended the "So You Want To Be A Coach" program during the 2025 WBCA Convention in Tampa. In its 22-year history, more than 1,200 graduating senior college women's basketball players have completed the WBCA's longest-running education program. The "So" program increases the understanding and application of skills necessary to secure coaching positions in women's basketball, increases the understanding and awareness of competencies necessary for success in coaching, introduces women's basketball players to coaches and administrators, and raises awareness of the existing talent pool of women's basketball players who have a passion and interest in coaching the game.



Established 2003

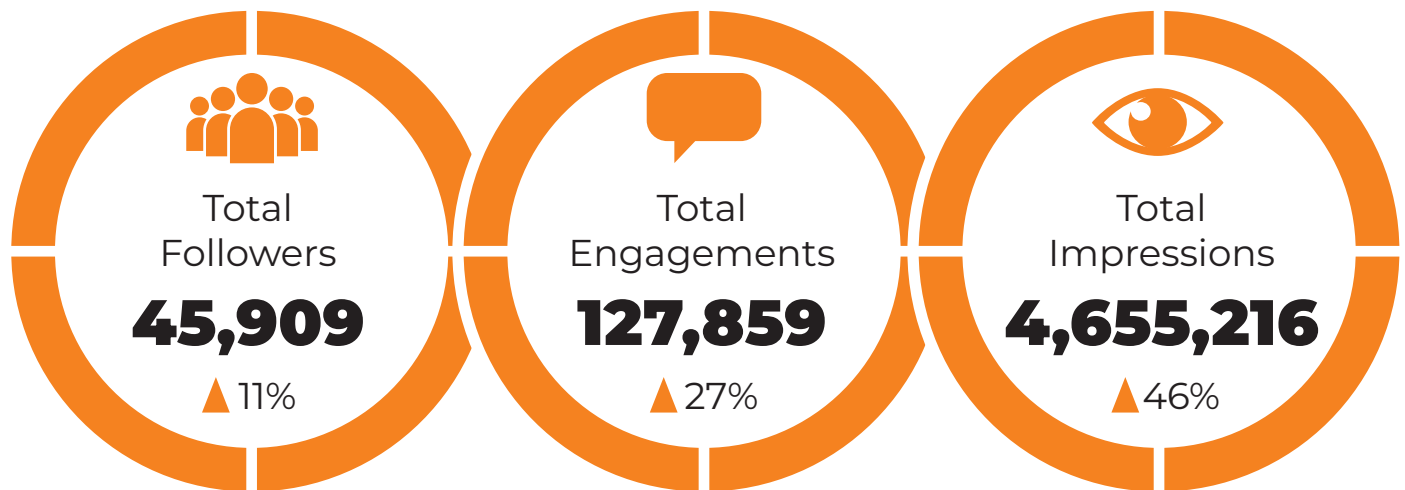


Established 2025

In January 2025, the WBCA debuted – *Gamechangers* – a new monthly podcast created by the WBCA Assistant Coaches Committee and dedicated to the groundbreaking shifts in the sport. Each episode highlights a gamechanger—coaches, visionaries, and leaders who have made a lasting impact on the game. Hosted by WBCA coaches, Gamechangers dives deep into the stories behind the transformative moments shaping the sport and provides insights and inspiration from the people driving change in the sport.

# SOCIAL MEDIA

Total followers, engagements, and impressions across the three main social media platforms all grew again during the 2024–25 association year. Overall followers rose to **45,909** (+11%), engagements climbed to **127,859** (+27%), and impressions reached a record **4.65 million** (+46%). The overall engagement rate was **2.7%**, which remains within the healthy industry benchmark of 1–5%. This demonstrates that WBCA content continues to resonate with audiences, strengthening brand visibility, deepening credibility, and fostering meaningful relationships with our community.



WBCA gained over **4,500** new followers across all platforms this year, with Instagram leading growth at nearly **1,700**.

Engagements rose **27%** with an overall engagement rate of **2.7%**, solidly within industry benchmarks.

Total impressions climbed to **4.6 million**, a **46%** increase, expanding WBCA's visibility across the basketball community.



## FACEBOOK

Followers  
**6,853**  
Page Likes  
**6,063**  
Engagements  
**18,620**  
Engagement Rate  
**2.6%**  
Impressions  
**706,481**



## INSTAGRAM

Followers  
**7,707**  
Likes on Posts  
**45,881**  
Engagements  
**50,864**  
Engagement Rate  
**3.0%**  
Impressions  
**1,698,696**



## X

Followers  
**28,937**  
Likes on Posts  
**18,102**  
Engagements  
**57,726**  
Engagement Rate  
**2.6%**  
Impressions  
**2,242,688**

Numbers do not include WBCA LinkedIn and YouTube accounts.

SOURCE: Sprout Social

# AWARDS

The WBCA continues to operate the most extensive recognition program of any coaches association. During the 2024-25 association year, the WBCA presented 17 different awards or honors to more than 700 individuals and teams.

## 2025 NATIONAL CHAMPIONS



Connecticut head coach Geno Auriemma raises the WBCA Coaches' Trophy crystal ball following the Huskies' 12th NCAA Division I national championship.

### **NCAA DIVISION II**

School: Grand Valley State University

Head Coach: Mike Williams

### **NCAA DIVISION III**

School: New York University

Head Coach: Meg Barber

### **NAIA**

School: Dordt University

Head Coach: Bill Harmsen

### **NCCAA DIVISION I**

School: College of the Ozarks

Head Coach: Becky Mullis

### **NCCAA DIVISION II**

School: Ozark Christian College

Head Coach: Kyle Wicklund

### **USCAA DIVISION I**

School: North American University

Head Coach: Ni'kia. Davis

### **USCAA DIVISION II**

School: Christendom College

Head Coach: Mary Minick

### **NJCAA DIVISION I**

School: Northwest Florida State College

Head Coach: Bart Walker

### **NJCAA DIVISION II**

School: Johnson County Community College (KS)

Head Coach: Ben Conrad

### **NJCAA DIVISION III**

School: Rochester Community and Technical College (MN)

Head Coach: Jason Bonde

# AWARDS

## ASSOCIATION-WIDE

### BETTY F. JAYNES LIFETIME ACHIEVEMENT AWARD



**JOAN CRONAN**

Longtime University of Tennessee administrator

"Joan Cronan's masterpiece, the Tennessee Lady Vols dynasty, is an iconic brand and symbol of women's basketball excellence. Joan and Pat Summitt established the standard to which all programs aspired. Joan's impact on her coaches, support staff, and student-athletes is immeasurable. Her vision and relationships delivered significant investments for salaries, budgets, facilities, and fundraising. She is a Tennessee treasure, national leader, and mentor to many — including me."

— Danielle Donehew, WBCA Executive Director

### CAROL ECKMAN INTEGRITY IN COACHING AWARD



**JONI TAYLOR**

Head Coach/Texas A&M University

### ADMINISTRATOR OF THE YEAR



**TIFFANY DANIELS**

Associate Commissioner, SWA/  
Southeastern Conference

### MEL GREENBERG MEDIA AWARD



**CAROLYN PECK**

Analyst/ESPN

# AWARDS

## ASSOCIATION-WIDE (cont'd)



Jenna Allen, Assistant Coach, Central Michigan University  
Annie Barrett, Assistant Coach, New York University  
Peyton Booth, Assistant Coach, Youngstown State University  
Lauren Brocke, Assistant Coach, Air Force Academy  
Kiara Carter, Assistant Coach, Chicago State University  
Mi'Cole Cayton, Assistant Coach, Louisiana State University Shreveport  
Kayla Cooper Williams, Assistant Coach, James Madison University  
Paige Corkins, Assistant Coach, College of the Holy Cross  
Moriah Crisp, Assistant Coach, Marist College  
Tania Davis, Assistant Coach, University of Iowa  
Jenny DeGraaf, Assistant Coach, University of South Carolina Upstate  
Terra Helm, Assistant Coach, McKendree University  
Holly Hoopingartner, Assistant Coach, Butler University  
Courtney Jaco, Assistant Coach, University of Southern California  
Kacie Jones, Assistant Coach, South Dakota State University

Ashleigh Lopez, Assistant Coach, Grand Canyon University  
Samantha Mancinelli, Assistant Coach, Tufts University  
Ashton Millender, Assistant Coach, DePaul University  
Caelyn Orlandi, Head Coach, Lewis-Clark State College  
Abigail Owings, Assistant Coach, University of Cincinnati  
Katherine Puda, Assistant Coach, Smith College  
Amber Raisner, Assistant Coach, Yale University  
Ty Rozier, Assistant Coach, Fairleigh Dickinson University Metropolitan  
Blair Schaefer, Assistant Coach, University of Texas  
Brianna Spector, Head Coach, Franklin & Marshall College  
Ariel Stephenson, Assistant Coach, University of Richmond  
Colsten Thompson, Assistant Coach, University of Alabama  
Uyen Tran, Assistant Coach, Wichita State University  
Angel Whetstone, Head Coach, Madison College  
Ashley Williams, Associate Head Coach, Hanover College  
Olivia Woolam, Assistant Coach, Denison University  
Harlyn Wyatt, Assistant Coach, University of Memphis  
Maya Wynn, Assistant Coach, Anderson University

# AWARDS

## ASSOCIATION-WIDE (cont'd)



# VICTORY

## CLUB

*Date listed is the date the milestone was achieved.*

### **1,300 wins**

Rhonda Farney, Georgetown High School (Texas), Dec. 13, 2024

### **900 wins**

Tom Shirley, Thomas Jefferson University, Feb. 19, 2025

### **800 wins**

Bill Fennelly, Iowa State University, March 19, 2025

### **700 wins**

Stephanie Gaitley, Fairleigh Dickinson University, Nov. 8, 2024

Cheri Harrer, Baldwin Wallace University, Jan. 11, 2025

Susan Summons, Miami Dade College, Jan. 25, 2025

### **600 wins**

Ben Conrad, Johnson County Community College, March 21, 2025

Naomi Graves, Springfield College, Feb. 22, 2025

Aaron Johnston, South Dakota State University, Nov. 8, 2024

Rick Reeves, University of the Cumberland, March 23, 2024

### **500 wins**

Robert Amsberry, Wartburg College, Dec. 7, 2024

Carla Berube, Princeton University, Feb. 8, 2025

Chancellor Dugan, Bellarmine University, Dec. 12, 2024

Chad Folsom, Benedictine College, Jan. 15, 2025

Ginger High-Colvin, Campbellsville University, Feb. 15, 2025

Mia Smith, Illinois Wesleyan University, Nov. 23, 2024

Daphne Thompson, SUNY Oneonta, Jan. 25, 2025

### **400 wins**

Danelle Bishop, California State Polytechnic University  
Pomona, Jan. 25, 2025

Stephanie Flamini, Bridgewater College, Feb. 18, 2025

Walter Paschal, Framingham State University, Jan. 25, 2025

Cleve Wright, Gannon University, Nov. 13, 2024

### **300 wins**

Bill Broderick, Christopher Newport University, Jan. 8, 2025

Roger Hodge, Tusculum University, Nov. 26, 2024

Romeo Lagmay, Taft College, Dec. 7, 2024

Ryan McCarthy, University of Alaska Anchorage, Nov. 18, 2024

Jeff Nickel, Georgetown College, Feb. 20, 2025

Rachelle Sayers, Carroll College, March 2, 2025

Suzy Venet Pietz, University of Mount Union, Jan. 25, 2025

### **200 wins**

Jason Burton, University of North Texas, Dec. 4, 2024

Hana Haden, Georgia Southern University, March 4, 2025

Yolett McPhee-McCuin, University of Mississippi, Nov. 18, 2024

### **100 wins**

Steve Edwards, Brewton-Parker College, Nov. 2, 2024

Callie Wheeler, Edinboro University, Jan. 25, 2025

# AWARDS

## NCAA DIVISION I

### COACH OF THE YEAR



**CORI CLOSE**

University of California, Los Angeles

Spalding Maggie Dixon  
**ROOKIE COACH OF THE YEAR**



**JAN JENSEN**

University of Iowa

**ASSISTANT COACH OF THE YEAR**  
presented by Aflac



**TONY NEWMAN**

University of California, Los Angeles

### COACH OF THE YEAR FINALISTS

Geno Auriemma, University of Connecticut  
Kenny Brooks, University of Kentucky  
Jason Burton, University of North Texas  
Cori Close, University of California, Los Angeles  
Lindsay Gottlieb, University of Southern California  
Megan Griffith, Columbia University  
Jacie Hoyt, Oklahoma State University

Wes Moore, North Carolina State University  
Shea Ralph, Vanderbilt University  
Vic Schaefer, University of Texas  
Charmin Smith, University of California, Berkeley  
Dawn Staley, University of South Carolina  
Carly Thibault-Dudonis, Fairfield University  
Ryun Williams, Colorado State University

# AWARDS

## NCAA DIVISION I (cont'd)

### DEFENSIVE PLAYER OF THE YEAR



**LAUREN BETTS**

University of California, Los Angeles

### FRESHMAN OF THE YEAR presented by adidas



**SARAH STRONG**

University of Connecticut

### WADE TROPHY



**PAIGE BUECKERS**

University of Connecticut

### COACHES' ALL-AMERICA

Georgia Amoore, University of Kentucky  
Lauren Betts, University of California, Los Angeles  
Madison Booker, University of Texas  
Paige Bueckers, University of Connecticut  
Hannah Hidalgo, University of Notre Dame

Kiki Iriafen, University of Southern California  
Aneesah Morrow, Louisiana State University  
Sarah Strong, University of Connecticut  
Hailey Van Lith, Texas Christian University  
JuJu Watkins, University of Southern California

# AWARDS

## NCAA DIVISION I (cont'd)

### HONORABLE MENTION COACHES' ALL-AMERICA

Sarah Ashlee Barker, University of Alabama  
 Raegan Beers, University of Oklahoma  
 Mikayla Blakes, Vanderbilt University  
 Zoe Brooks, North Carolina State University  
 Jaloni Cambridge, Ohio State University  
 Sonia Citron, University of Notre Dame  
 Audi Crooks, Iowa State University  
 Katie Dinnebier, Drake University  
 Yvonne Ejim, Gonzaga University  
 Rori Harmon, University of Texas  
 Stailee Heard, Oklahoma State University  
 Maud Huijbens, Gonzaga University  
 Aziaha James, North Carolina State University  
 Lauren Jensen, Creighton University  
 Flau'Jae Johnson, Louisiana State University  
 Kymora Johnson, University of Virginia  
 Ta'Niya Latson, Florida State University  
 Ayoka Lee, Kansas State University  
 Darianna Littlepage-Buggs, Baylor University  
 Cotie McMahon, Ohio State University  
 Brooklyn Meyer, South Dakota State University  
 Olivia Miles, University of Notre Dame  
 Emeralda Morales, Montana State University  
 S'Mya Nichols, University of Kansas  
 Aaliyah Nye, University of Alabama  
 Lucy Olsen, University of Iowa  
 Te-Hina Paopao, University of South Carolina  
 Khamil Pierre, Vanderbilt University  
 Sedona Prince, Texas Christian University  
 JJ Quinerly, West Virginia University  
 Kiki Rice, University of California, Los Angeles  
 Saniya Rivers, North Carolina State University  
 Emma Ronsiek, Colorado State University  
 Madison Scott, University of Mississippi  
 Shyanne Sellers, University of Maryland  
 Serena Sundell, Kansas State University  
 Makayla Timpson, Florida State University  
 Allie Turner, Gonzaga University  
 Harmoni Turner, Harvard University  
 Mikaylah Williams, Louisiana State University

### ACADEMIC TOP 25 TEAM HONOR ROLL

*Rank, Institution, Head Coach, Team GPA*

1. University of Wisconsin-Green Bay, Kayla Karius, 3.862
2. Boise State University, Gordy Presnell, 3.803
3. Youngstown State University, Melissa Jackson, 3.781
4. Western Illinois University, JD Gravina, 3.775
5. South Dakota State University, Aaron Johnston, 3.760
6. Creighton University, Jim Flanery, 3.757
7. DePaul University, Jill Pizzotti, 3.750
8. Drake University, Allison Pohlman, 3.741
9. California Baptist University, Jarrod Olson, 3.733
10. Utah Valley University, Dan Nielson, 3.716
11. Davidson College, Gayle Fulks, 3.711
12. Saint Peter's University, Jennifer Leedham, 3.700
13. Tennessee Technological University, Kim Rosamond, 3.699
14. Montana State University, Tricia Binford, 3.694
15. University of Wyoming, Heather Ezell, 3.692
16. University of Maine, Amy Vachon, 3.691
17. Cleveland State University, Chris Kielsmeier, 3.685
18. Northern Kentucky University, Jeff Hans, 3.678
19. Kent State University, Todd Starkey, 3.669
- T20. Manhattan University, Heather Vulin, 3.667
- T20. University of Wisconsin-Milwaukee, Kyle Rechlicz, 3.667
22. Iowa State University, Bill Fennelly, 3.658
23. Lafayette College, Kia Damon-Olson, 3.630
24. Purdue University Fort Wayne, Maria Marchesano, 3.624
25. University of Northern Iowa, Tanya Warren, 3.621

### SPECIAL MENTION

East Tennessee State University, Brenda Mock Brown, 3.616  
 Lehigh University, Addie Micir, 3.615  
 University of Portland, Michael Meek, 3.605  
 Quinnipiac University, Tricia Fabbri, 3.602  
 Eastern Michigan, Sahar Nusseibeh, 3.597  
 University of Illinois, Shauna Green, 3.597  
 Georgia State University, Gene Hill, 3.587  
 Northern Illinois University, Lisa Carlson, 3.585  
 Marist University, Erin Doughty, 3.584  
 University of South Florida, Jose Fernandez, 3.584  
 Stonehill College, Trisha Brown, 3.583  
 New Jersey Institute of Technology, Mike Lane, 3.581

*Continued on NEXT PAGE*

# AWARDS

## NCAA DIVISION I (cont'd)

### ACADEMIC TOP 25 SPECIAL MENTION

*Continued from PREVIOUS PAGE*

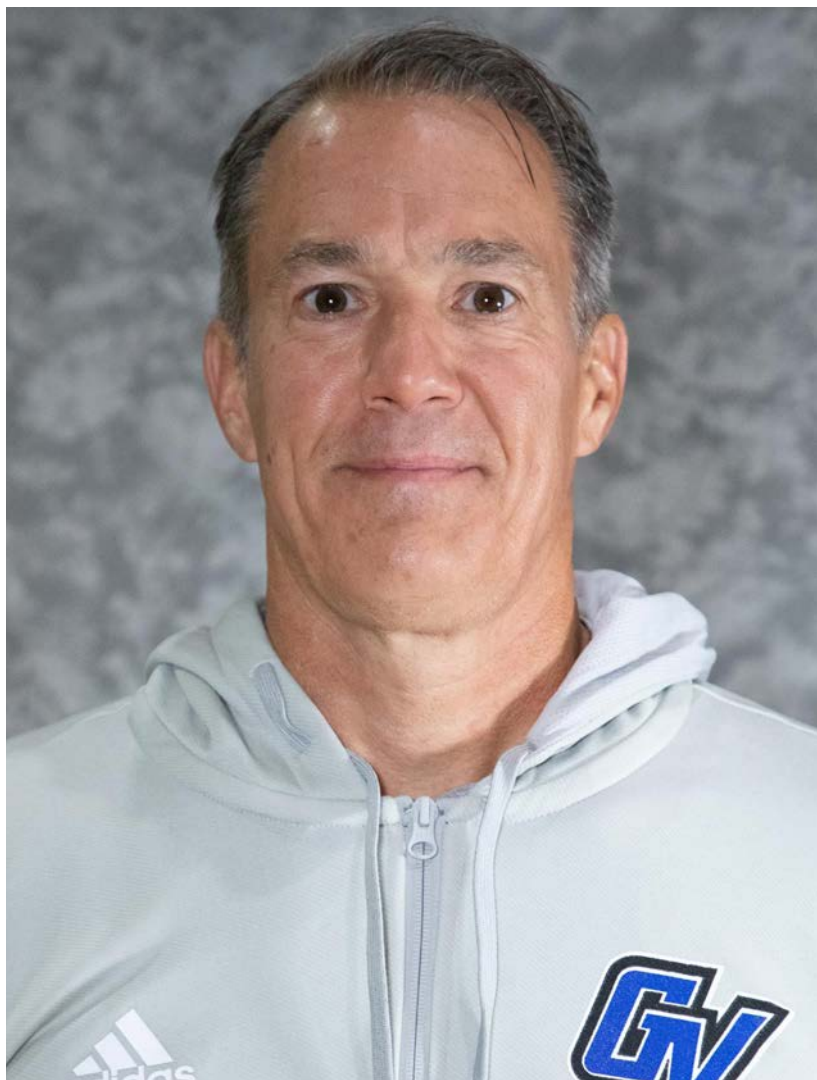
Illinois State University, Kristen Gillespie, 3.581  
University of Nebraska, Amy Williams, 3.579  
University of Cincinnati, Katrina Merriweather, 3.576  
University of West Georgia, Joanna Reitz, 3.571  
Fairleigh Dickinson University-Metropolitan, Stephanie Gaitley, 3.541  
Belmont University, Bart Brooks, 3.540  
University of Northern Colorado, Kristen Mattio, 3.536  
University of North Carolina, Courtney Banghart, 3.532  
Eastern Illinois University, Marqus Mcglothan, 3.530  
Michigan State University, Robyn Fralick, 3.530  
Indiana University, Teri Moren, 3.528  
Portland State University, Chelsea Gregg, 3.528  
University at Albany, Colleen Mullen, 3.525  
University of Minnesota, Dawn Plitzuweit, 3.521  
Abilene Christian University, Julie Goodenough, 3.511  
Colorado State University, Ryun Williams, 3.511  
University of Kentucky, Kenny Brooks, 3.504  
Saint Joseph's University, Cindy Griffin, 3.503  
University of Iowa, Jan Jensen, 3.495  
University of Richmond, Aaron Roussell, 3.492  
Southern Illinois University Edwardsville, Samantha Quigley Smith, 3.489  
Drexel University, Amy Mallon, 3.489  
University of California, Berkeley, Charmin Smith, 3.462  
Duke University, Kara Lawson, 3.456  
Merrimack College, Kelly Morrone, 3.454  
University of Alabama-Birmingham, Randy Norton, 3.447  
Sacramento State University, Aaron Kallhoff, 3.447  
University of Pennsylvania, Michael McLaughlin, 3.446  
University of South Carolina, Dawn Staley, 3.438  
University of Alabama, Kristy Curry, 3.432  
University of Missouri, Robin Pingeton, 3.431  
Robert Morris University, Chandler McCabe, 3.431  
Northwestern University, Joe Mckeown, 3.427  
University of Miami, Tricia Cullop, 3.426  
Missouri State University, Beth Cunningham, 3.426  
University of Denver, Doshia Woods, 3.425

Texas A&M University, Joni Taylor, 3.422  
Bradley University, Kate Popovec-Goss, 3.398  
University of North Carolina Greensboro, Trina Patterson, 3.395  
Liberty University, Carey Green, 3.394  
Fairfield University, Carly Thibault-Dudonis, 3.392  
Lipscomb University, Lauren Sumski, 3.377  
Texas Tech University, Krista Gerlich, 3.376  
Florida State University, Brooke Wyckoff, 3.375  
Temple University, Diane Richardson, 3.373  
University of Texas, Vic Schaefer, 3.372  
Longwood University, Erika Lang-Montgomery, 3.369  
Vanderbilt University, Shea Ralph, 3.367  
Hofstra University, Danielle Santos, 3.366  
University of Colorado, JR Payne, 3.366  
University of Louisville, Jeff Walz, 3.363  
Virginia Tech, Megan Duffy, 3.360  
University of North Carolina Asheville, Tynesha Lewis, 3.358  
University of Southern California, Lindsay Gottlieb, 3.348  
Marquette University, Cara Consuegra, 3.345  
University of Hawaii, Laura Beeman, 3.343  
Yale University, Dalila Eshe, 3.338  
University of Oklahoma, Jennie Baranczyk, 3.334  
University of Tennessee, Kim Caldwell, 3.323  
Kansas State University, Jeff Mittie, 3.317  
University of Notre Dame, Niele Ivey, 3.314  
Elon University, Charlotte Smith, 3.271  
Ohio State University, Kevin McGuff, 3.263  
Oklahoma State University, Jacie Hoyt, 3.254  
West Virginia University, Mark Kellogg, 3.242  
University of Akron, Ryan Gensler, 3.225  
Seton Hall University, Anthony Bozzella, 3.205  
University of Nevada, Las Vegas, Lindy La Rocque, 3.201  
Brigham Young University, Lee Cummar, 3.189  
University of Oregon, Kelly Graves, 3.168  
Georgia Institute of Technology, Nell Fortner, 3.162  
Baylor University, Nicki Collen, 3.133  
University of North Texas, Jason Burton, 3.128  
University of Connecticut, Geno Auriemma, 3.061  
University of Tulsa, Angie Nelp, 3.047  
Troy University, Chanda Rigby, 3.046  
Georgetown University, Darnell Haney, 3.008  
United States Naval Academy, Tim Taylor, 3.005

# AWARDS

## NCAA DIVISION II

### COACH OF THE YEAR



**MIKE WILLIAMS**

Grand Valley State University

### ASSISTANT COACH OF THE YEAR

presented by Aflac



**PHILIP SAYERS**

Grand Valley State University

### PLAYER OF THE YEAR



**NALA WILLIAMS**

California State University, Dominguez Hills

### COACH OF THE YEAR FINALISTS

John Bonner, California State University, Dominguez Hills  
Mark Campbell, Union University  
Melissa DeVore, Coker University  
Beth Jillson, Texas Woman's University

Talia Kahrs, Fort Hays State University  
Callie Wheeler, Pennsylvania Western University, Edinboro  
Carolyn White, Bentley University  
Mike Williams, Grand Valley State University

# AWARDS

## NCAA DIVISION II (cont'd)

### COACHES' ALL-AMERICA

Rylie Bisballe, Grand Valley State University  
Katie DeGarmo, Fort Hays State University  
Grace Foster, Lubbock Christian University  
Ashley Ingram, Texas Woman's University  
Alisha Little, Colorado State University Pueblo  
Caroline Martin, University of North Georgia  
Bri Stoltzman, Southwest Minnesota State University  
Emilee Weakley, Frostburg State University  
Maggie Whitmore, Bentley University  
Nala Williams, California State University, Dominguez Hills

### HONORABLE MENTION

Dyauni Boyce, Montana State University Billings  
Natalie Bremer, Minnesota State University, Mankato  
Chance Bucher, Eckerd College  
Marina Callahan, Assumption University  
Emily Chmiel, East Stroudsburg University  
Caitlynn Daniels, Drury University  
Destiny Garrett, Georgia Southwestern State University  
Morgan Gentile, Pennsylvania Western University, Edinboro  
Taylor Gugliuzza, Lewis University  
Delaney Haines, Southern Connecticut State University  
Mallory Hampton, Lee University  
Kelly Heimbarger, Azusa Pacific University  
Taylor Hinkle, Holy Family University  
Tori Hollingshead, University of Alaska Anchorage  
Melanie Hoyt, Saint Anselm College  
Sunny Huerta, Central Washington University  
Leslie Huffman, Fairmont State University  
Madysen Jean-Louis, Embry Riddle Aeronautical University (FL)  
Erin Kaufman, Malone University  
Michelle Kozicki, West Chester University of Pennsylvania  
Olivia Lee, Union University  
Maci Maddox, Lubbock Christian University  
Diamond McDowell, Anderson University  
Zamiya Passmore, Anderson University  
Zoe Piller, University of Tampa  
Grace Pyle, Pittsburg State University  
Olivia Reed Thyne, Colorado Mesa University  
Reese Schaaf, University of Central Missouri  
Hayley Smith, Ashland University  
Emily Trushel, University of North Georgia

### ACADEMIC TOP 25 TEAM HONOR ROLL

*Rank, Institution, Head Coach, Team GPA*

1. St. Cloud State University, Lori Fish, 3.892
2. Winona State University, Ana Wurtz, 3.887
3. Texas Woman's University, Beth Jillson, 3.881
4. Malone University, Selana Ickes, 3.874
5. Tiffin University, Josh Mason, 3.864
6. Lubbock Christian University, Steve Gomez, 3.823
7. Ferris State University, Kurt Westendorp, 3.820
8. Northwestern Oklahoma State University, Tasha Diesselhorst, 3.813
9. Chaminade University of Honolulu, Michael Edwards, 3.805
10. Ashland University, Kari Pickens, 3.795
11. Missouri Western State University, Ashton Feldhaus, 3.788
12. University of Virginia's College at Wise, Jamie Cluesman, 3.763
13. California State University, East Bay, Jenny Thigpin, 3.760
14. Montana State University Billings, Kevin Woodin, 3.757
15. Upper Iowa University, Justin Maass, 3.750
16. Missouri University of Science and Technology, Kira Carter, 3.736
17. Point Loma Nazarene University, Charity Elliott, 3.728
18. Dominican University of California, Tim LaKose, 3.726
19. West Liberty University, Kyle Cooper, 3.715
20. Southern New Hampshire University, Karen Pinkos, 3.713
21. Maryville University, Brita Hand, 3.709
22. University of Sioux Falls, Travis Traphagen, 3.703
23. Goldey-Beacom College, Bethann Burke, 3.702
24. Truman State University, Theo Dean, 3.695
25. Northwest Missouri State University, Austin Meyer, 3.695

### SPECIAL MENTION

University of Central Missouri, David Slifer, 3.689  
Fairmont State University, Stephanie Anderson, 3.687  
Fort Hays State University, Talia Kahrs, 3.685  
McKendree University, Kari Kerkhoff, 3.676  
Kutztown University, Janet Malouf, 3.668  
D'Youville University, Kelly Broderick, 3.660  
Rockhurst University, Larry Park, 3.655  
Kentucky State University, Amani Williams, 3.651

*Continued on NEXT PAGE*

# AWARDS

## NCAA DIVISION II (cont'd)

### ACADEMIC TOP 25 SPECIAL MENTION

*Continued from PREVIOUS PAGE*

Southwest Minnesota State University, Tom Webb, 3.649  
Pittsburg State University, Amanda Davied, 3.647  
Lee University, Marty Rowe, 3.642  
Minnesota State University Moorhead, Karla Nelson, 3.634  
Caldwell University, Christie Conforti, 3.633  
California State University San Marcos, Jana Pearson, 3.628  
Chestnut Hill College, Megan Fox, 3.626  
Wayne State University, Carrie Lohr, 3.604  
Michigan Technological University, Samantha Clayton, 3.589  
Pace University, Carrie Seymour, 3.587  
Davenport University, Shonda Sanders, 3.574  
Northern Michigan University, Casey Thousand, 3.566  
University of Findlay, Michele Durand, 3.558  
Menlo College, Shannon Spataro, 3.557  
Bentley University, C White, 3.550  
California State Polytechnic University, Pomona, Danelle Bishop, 3.542  
University of Wisconsin-Parkside, Jen Conely, 3.541  
Florida Institute of Technology, John Reynolds, 3.536

Assumption University, Kerry Phayre, 3.524  
Daemen University, Jenepher Banker, 3.498  
Carson-Newman University, Michael Mincey, 3.493  
Seattle Pacific University, Karen Byers, 3.465  
Newman University, Amy Briggs, 3.462  
West Chester University, Kiera Wooden, 3.438  
University of West Florida, Stephanie Yelton, 3.432  
Minnesota State University, Emilee Thiesse, 3.431  
Barry University, Heather Macy, 3.430  
Shorter University, LaSheena Brooks, 3.425  
Southern Arkansas University, Darrick Matthews, 3.417  
University of Bridgeport, Jimmy Howard, 3.407  
Wingate University, Ann Hancock, 3.377  
University of North Carolina at Pembroke, Dr. Kendra Samuels-Eaton, 3.372  
Hillsdale College, Brianna Brennan, 3.372  
Union University, Mark Campbell, 3.338  
California State University, Monterey Bay, Sarah Hopkins-Chery, 3.316  
Tusculum University, Roger Hodge, 3.283  
Academy of Art, Jesse Clark, 3.278  
Anderson University, Jonathon Barbaree, 3.268  
Emory & Henry University, Jaclyn Dickens, 3.249  
Cal State University, San Bernardino, Casandra Renno, 3.249  
Augusta University, Celeste Stewart, 3.172

### WBCA-D2CIDA PLAYER OF THE WEEK

*Beginning with the 2024-25 association year, the WBCA and the NCAA Division II Sports Information Directors Association (D2CIDA) partnered to present the WBCA-D2CIDA Player of the Week award.*

Nov. 12, 2024 – Sage Hawley, Harding University  
Nov. 19, 2024 – Emma Kuczynski, Thomas Jefferson University  
Nov. 26, 2024 – Destiny Garrett, Georgia Southwestern University  
Dec. 3, 2024 – Alisha Little, Colorado State University-Pueblo  
Dec. 10, 2024 – Madeline Evans, Lock Haven University  
Dec. 17, 2024 – Sage Hawley, Harding University  
Jan. 7, 2025 – Destiny Garrett, Georgia Southwestern State University

Jan. 14, 2025 – Alisha Little, Colorado State University-Pueblo  
Jan. 21, 2025 – Bri Stoltzman, Southwest Minnesota State University  
Jan. 28, 2025 – Michaela Jewett, Northern State University  
Feb. 4, 2025 – Alisha Little, Colorado State University-Pueblo  
Feb. 11, 2025 – Diamond McDowell, Anderson University (SC)  
Feb. 18, 2025 – Kiiyani Anitielu, Adams State University  
Feb. 25, 2025 – Diamond McDowell, Anderson University (SC)  
March 4, 2025 – Rory Geer, Harding University

# AWARDS

## NCAA DIVISION III

### COACH OF THE YEAR



**MEG BARBER**

New York University

### ASSISTANT COACH OF THE YEAR

presented by Aflac



**NETTIE RESPONDEK**

New York University

### PLAYER OF THE YEAR



**NATALIE BRUNS**

New York University

### COACH OF THE YEAR FINALISTS

Meg Barber, New York University  
Lindsey Burke, Randolph-Macon College  
Michelle Ferenz, Whitman College  
Brad Fischer, University of Wisconsin-Oshkosh  
Cheri Harrer, Baldwin Wallace University  
Lynn Hersey, Smith College

Hannah Iverson, University of Wisconsin-Stout  
Corinne Jones, State University of New York (SUNY)  
College at Brockport  
Laurie Kelly, Gustavus Adolphus College  
Veronica Nolt, Elizabethtown College  
Megan Phelps, Bowdoin College  
Mia Smith, Illinois Wesleyan University

# AWARDS

## NCAA DIVISION III (cont'd)

### COACHES' ALL-AMERICA

Natalie Bruns, New York University  
Kacie Carollo, University of Wisconsin-Whitewater  
Tova Gelb, Vassar College  
Lauren Huber, Illinois Wesleyan University  
Sydney Jones, Bowdoin College  
Ally Landau, Smith College  
Belle Pellecchia, New York University  
Kasey Schipfer, Ohio Wesleyan University  
Mary Schleusner, Washington & Lee University  
Zoë Tomlinson, Colorado College

### HONORABLE MENTION

Alayna Arnolie, Gettysburg College  
Korin Baker, Whitman College  
Carolae Barton, U.S. Merchant Marine Academy  
Grace Bezold, Hanover College  
Jessica Brooks, Washington University in St. Louis  
Elsa Daulerio, Bates College  
Heaven Figueroa, Lehman College  
Haley Franklin, Millsaps College  
Bri Frongillo, Emerson College  
Arianna Gerig, Williams College  
Terese Greene, Shenandoah University  
Abby Gress, University of Rochester  
Natalie Gricius, Carroll University  
Reese Harden, Messiah University  
Lilly Hedge, Western New England University  
Kate Herlihy, Rowan University  
Emily Holland, McMurry University  
Chinwe Irondi, Ursinus College  
Catherine Kagey, Randolph-Macon College  
Emma Kniefel, Gustavus Adolphus College  
Rhe Nae Leach, Whittier College  
McKenzie Matheny, Randolph-Macon College  
Summer McNulty, Elizabethtown College  
Madison Medbury, Rhode Island College  
Kailee Mulkey, Texas Lutheran University  
Alexa Mustafaj, Middlebury College  
Bri O'Connor, Capital University  
Catherine Or, Carnegie Mellon University  
Caroline Peper, New York University  
Olivia Rangel, Carroll University  
Mackenzie Reigle, State University of New York at Geneseo  
Caely Ressler, Baldwin Wallace University  
Anna Scoblick, Catholic University  
Raegan Sorensen, University of Wisconsin-Stout  
Alexa Thomson, University of Wisconsin-Stevens Point  
Sidney Tomasso, St John Fisher University  
Kayce Vaile, University of Wisconsin-Oshkosh  
Olivia Vick, Trinity College (CT)  
Sidney Wagner, Trine University  
Carly Whiteside, University of Massachusetts-Dartmouth

### ACADEMIC TOP 25 TEAM HONOR ROLL

*Rank, Institution, Head Coach, Team GPA*

1. Colorado College, Katherine Menendez, 3.864
2. Massachusetts Institute of Technology, Lucia Robinson-Griggs, 3.863
3. St. John Fisher University, Sarah Cartmill, 3.838
4. University of Wisconsin-Stevens Point, Matt Hockett, 3.823
5. Benedictine University, Oliver Wiseman, 3.814
6. Wartburg College, Bob Amsberry, 3.810
7. Thiel College, Jess Vormelker, 3.802
8. Baldwin Wallace University, Cheri Harrer, 3.797
9. Carthage College, Megan Jones, 3.793
10. Simpson College, Brian Niemuth, 3.777
11. Drew University, John Olenowski, 3.774
12. Shenandoah University, Melissa Smeltzer-Kraft, 3.771
13. Lawrence University, Riley Woldt, 3.770
14. University of Wisconsin-Oshkosh, Brad Fischer, 3.760
15. State University of New York at Canton, Chris Klassen, 3.754
16. Oberlin College, Stephany Dunmyer, 3.752
17. College of Saint Benedict, Mike Durbin, 3.749
18. Trine University, Andy Rang, 3.737
19. University of Wisconsin-Stout, Hannah Iverson, 3.736
20. Smith College, Lynn Hersey, 3.735
21. Gustavus Adolphus College, Laurie Kelly, 3.729
- T22. Williams College, Pat Manning, 3.728
- T22. Dickinson College, Aby Diop, 3.728
24. Rochester Institute of Technology, Melissa Kuberka, 3.726
25. University of Maine at Farmington, Nate Carson, 3.716

### SPECIAL MENTION

St. Olaf College, Megan Lueck, 3.713  
Nebraska Wesleyan University, James Wiedie, 3.711  
Houghton University, Phil Pellegrino, 3.710  
University of Wisconsin-River Falls, Shelby Lyman, 3.710  
Washington and Lee University, Brittney Kemp, 3.706  
Denison University, Maureen Hirt, 3.703  
New York University, Meg Barber, 3.693  
Illinois Wesleyan, Mia Smith, 3.687  
Alfred University, Michael Moskowitz, 3.686  
Misericordia University, Jessica Rini, 3.683  
Swarthmore College, Dawn Grant, 3.679

*Continued on NEXT PAGE*

# AWARDS

## NCAA DIVISION III (cont'd)

### ACADEMIC TOP 25 SPECIAL MENTION

*Continued from PREVIOUS PAGE*

Concordia College (MN), kim wagers, 3.679  
Wheaton College (MA), Kanika Cummings Groves, 3.678  
Case Western Reserve University, Jennifer Reimer, 3.677  
Rensselaer Polytechnic Institute, John Greene, 3.672  
Washington University in St. Louis, Lisa Stone, 3.672  
Springfield College, Naomi Graves, 3.667  
St. Catherine University, Donald Mulhern, 3.660  
Carnegie Mellon University, Kathy Mcconnell-Miller, 3.656  
Christopher Newport University, Bill Broderick, 3.646  
Marywood University, Tara Macciocco, 3.643  
Buena Vista University, Kylee Boettcher, 3.642  
Sarah Lawrence College, Bradley Alexander, 3.639  
Emory University, Misha Jackson, 3.634  
Martin Luther College, Dan Gawrisch, 3.633  
Catholic University, Matt Donohue, 3.630  
Heidelberg University, Erin Eaton, 3.629  
Johns Hopkins, Rodney Rogan, 3.624  
Ohio Northern University, Mark Huelsman, 3.621  
McDaniel College, Christin Gowan, 3.620  
Penn State Harrisburg, Ross Patrick, 3.616  
College of Wooster, Olivia Besancon, 3.615  
University of Redlands, Rich Murphy, 3.614  
State University of New York at Geneseo, Alyssa Polosky, 3.612  
Manchester University, Josh Dzurick, 3.612  
Calvin University, Mark Christner, 3.611  
Rowan University, Kate Pearson, 3.609  
Bryn Mawr College, Carla Coleman, 3.607  
Immaculata University, Brittany Whalen, 3.606  
University of Wisconsin-Eau Claire, Tonja Englund, 3.605  
Haverford College, Grace Elliott, 3.600  
King's College, Caitlin Hadzimichalis, 3.597  
DePauw University, Kristin Huffman, 3.597  
College of St. Scholastica, Jason Schmitz, 3.594  
State University of New York at Brockport, Corinne Jones, 3.586  
Bates College, Alison Montgomery, 3.579  
Elizabethtown College, Veronica Nolt, 3.571  
University of Mount Union, Suzanne Venet Pietz, 3.563  
Salisbury University, Aprile Preller, 3.559

Messiah University, Mike Miller, 3.557  
Capital University, Camille McPherson, 3.557  
Piedmont University, Jamie Purdy, 3.555  
Carleton College, Tammy Metcalf-Filzen, 3.549  
Gallaudet University, Stephanie Stevens, 3.548  
Susquehanna University, Gabby Holko, 3.546  
Southern Virginia University, Lynette Schroeder, 3.540  
Anderson University (IN), Jon Gin, 3.533  
Whitman College, Michelle Ferenz, 3.530  
Occidental College, Anahit Aladzhanyan, 3.525  
Edgewood College, Kole Vivian, 3.525  
Moravian University, Mary Beth Spirk, 3.519  
Monmouth College, Michelle DeCoud, 3.514  
Gettysburg College, Nathan Davis, 3.511  
Babson College, Kate Barnosky, 3.505  
Luther College, Amanda Bailey, 3.502  
Claremont-Mudd-Scripps Colleges, Chanel Murchison, 3.479  
Central College, Justin Weiland, 3.478  
Manhattanville University, Kate Vlahakis, 3.475  
Illinois Institute of Technology, Carissa Sain, 3.473  
Bard College, Alaina Walker, 3.470  
Kean University, Mandy King, 3.466  
Worcester State University, Karen Tessmer, 3.463  
University of Minnesota, Morris, Tim Grove, 3.461  
Mount Saint Mary College, Marion Dietz, 3.458  
Coe College, Kayla Waskow, 3.447  
Randolph-Macon College, Lindsey Burke, 3.429  
State University of New York at New Paltz, James Seward, 3.414  
University of Lynchburg, Allison Nichols, 3.414  
Franklin & Marshall College, Brianna Spector, 3.410  
Roger Williams University, Kelly Thompson, 3.400  
Kenyon College, Mary Corbett, 3.395  
Suffolk University, Ed Leyden, 3.384  
University of Mary Washington, Deena Applebury, 3.360  
Bethany Lutheran College, Emma Purfeerst, 3.353  
Wilson College, Dylan Ward, 3.345  
William Paterson University, Erin Monahan, 3.344  
Kalamazoo College, Ryan Clark, 3.340  
Rhode Island College, Jenna Cosgrove, 3.339  
Principia College, Ramiro Dominguez, 3.336  
St. Mary's College of Maryland, LaTanya Collins, 3.267  
Willamette University, Peg Swadener, 3.197  
Colby-Sawyer College, Tim Viola, 3.187  
Mount Aloysius College, Brian Giesler, 3.161

# NAIA AWARDS

## COACH OF THE YEAR



**CARLOTTA KLOPPENBURG-PRUITT**

Southern Oregon University

## ASSISTANT COACH OF THE YEAR

presented by Aflac



**JESSICA GARRIGA**

William Carey University

## PLAYER OF THE YEAR



**JESSICA CARROTHERS**

Indiana University Northwest

## COACH OF THE YEAR FINALISTS

Ginger Colvin, Campbellsville University  
Kevin Herod, Florida Memorial University  
Carlotta Kloppenburg, Southern Oregon University

Tonishea Mack, Governors State University  
John Mayberry, Williams Baptist University  
Ryan Showman, Kansas Wesleyan University

# AWARDS

## NAIA (cont'd)

### COACHES' ALL-AMERICA

Morgan Baird, Southern Oregon University  
 Jessica Carrothers, Indiana University Northwest  
 Korynn Clason, Sterling College  
 Lilli Frasure, Indiana Wesleyan University  
 Jaycie Jenkins, Milligan University  
 Lauren Lee, Campbellsville University  
 Abbey McNally, Marian University (IN)  
 Keanna Salave'a, University of Providence  
 Allie Stone, University of Pikeville  
 Mikayla Woods, Langston University

### HONORABLE MENTION

Alyssa Alvarez, Arizona Christian University  
 Kloe Bowin, Tabor College  
 Rachel Bush, University of Pikeville  
 Zareia Chevre, Governors State University  
 Shy Christopher, Mid-America Christian University  
 Semaj Clark, Milligan University  
 Brooke Dial, Waldorf University  
 Taylor Folkema, Indiana Wesleyan University  
 Madison Hart, Bethel University (TN)  
 Micah Hart, Bethel University (TN)  
 Cassidy Lowe, Dillard University  
 Ashlee Maldonado, University of Providence  
 Kassie Monday, University of the Cumberlands  
 Megan Nestor, Wayland Baptist University  
 Alyvia Owens, Tabor College  
 Lamyah Ricks, Kansas Wesleyan University  
 Ellie Sander, Lewis-Clark State College  
 Kylee Scheer, Mid-America Christian University  
 AJ Stevenson, Georgetown College  
 Carmen Taylor, Williams Baptist University

### ACADEMIC TOP 25

#### TEAM HONOR ROLL

*Rank, Institution, Head Coach, Team GPA*

1. University of the Cumberlands, Rick Reeves, 3.837
2. Hastings College, Jina Douglas, 3.794
3. Bethel University (TN), Chris Nelson, 3.783
4. Carroll College, Rachelle Sayers, 3.766
5. Cornerstone University, Jessica Yonkers, 3.755
6. Tabor College, Shawn Reed, 3.748
7. Embry-Riddle Aeronautical University (AZ), Michael Trujillo, 3.725
8. John Brown University, Sydni Salvato, 3.690
9. Grace College, Dan Davis, 3.688
10. Milligan University, Kylie Russell Greer, 3.679
11. Culver-Stockton College, Janette Burgin, 3.674
- T12. University of Providence (MT), Bill Himmelberg, 3.662
- T12. Ottawa University (KS), Hunter Bondurant, 3.662
14. Columbia College (MO), Matthew Moore, 3.655
15. Lewis-Clark State College, Caelyn Orlandi, 3.647
16. University of St. Francis (IL), John McGinty, 3.642
17. University of Pikeville, Clifton Williams, 3.626
18. University of Jamestown (ND), Thad Sankey, 3.617
19. Southern Oregon University, Carlotta Kloppenburg-Pruitt, 3.597
20. Georgetown College (KY), Jeff Nickel, 3.538
21. University of Rio Grande (OH), David Smalley, 3.516
22. Warner University (FL), Niesha Lowe, 3.484
23. Montana State University-Northern, Chris Mouat, 3.470
24. Truett McConnell University, Tiek Fields, 3.393
25. Peru State College, Mike Sybrant, 3.350

### SPECIAL MENTION

Texas Wesleyan University, Scott Hyland, 3.320  
 University of Health Sciences and Pharmacy, Markell Cox, 3.214



# AWARDS

## TWO-YEAR COLLEGE

### COACH OF THE YEAR

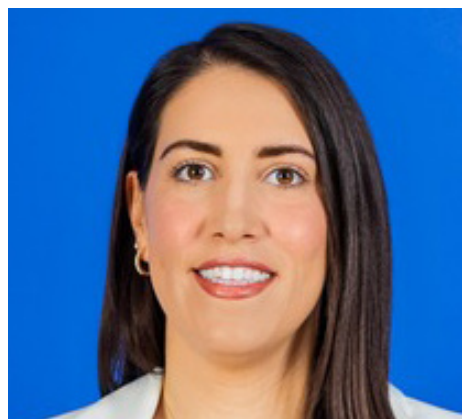


**CHELSEA DEWEY**

Arizona Western College

### ASSISTANT COACH OF THE YEAR

presented by Aflac



**MARIJA PACAR**

Odessa College

### PLAYER OF THE YEAR



**CACIA ANTONIO**

New Mexico Junior College

### COACHES' ALL-AMERICA

Saroiya Ajomale, College of Southern Nevada  
Cacia Antonio, New Mexico Junior College  
Awa Fane, Panola College  
Brooklyn Fely, Umpqua Community College  
Ella Lavigne, Central Maine Community College

Jaida McDonald, Pensacola State College  
Daisia Mitchell, Mt. San Antonio College  
Mia Moore, Rock Valley College  
Beautiful Waheed, Wabash Valley College  
Naomy Zonzon-Huyghe, Arizona Western College

# AWARDS

## TWO-YEAR COLLEGE (cont'd)

### HONORABLE MENTION

### COACHES' ALL-AMERICA

Nakiyah Allen, Kilgore College  
 Madison Bob, Kilgore College  
 Nevaeh Brown, Paris Junior College  
 Macaya Copeland, Rochester Community & Technical College  
 Jarahle Daniels, Kilgore College  
 Pania Davis, New Mexico Junior College  
 Alyssa Dreessen, Orange Coast College  
 Julia Fontanillo, Raritan Valley Community College  
 Kara Goetzinger, Rochester Community & Technical College  
 Rita Gomes, Arizona Western College  
 Nakiya Harris, Wabash Valley College  
 Kiara Harris, Miami-Dade College  
 Rori Hoffmeyer, Pima Community College  
 Ashiiian Hunter, Mesa Community College  
 Josie Iverson, Northland Community & Technical College  
 Rose Jamison, Napa Valley College  
 Jessie Joaquim, Cochise Community College  
 Britany Kogbara, Mesa Community College  
 Madison Lewis, Wabash Valley College  
 Monica Marsh, Trinity Valley Community College  
 Taliyah McFerson, Mt. San Antonio College  
 Faith Mersburgh, College of Southern Nevada  
 Joyce Mulumba, Sacramento City College  
 Julie Nekolna, Shelton State Community College  
 Alisha Nunley, Collin County Community College  
 Clearia Peterson, Miami-Dade College  
 Shameir Quimby, Miami-Dade College  
 Jaylice Rosario, Temple College  
 Moka Saiki, Irvine Valley College  
 Taliyah Scott, Johnson County Community College  
 Micayla Silas, Cochise Community College  
 Kiley Sours-Miller, Pima Community College  
 Kayla Terry, College of Southern Nevada  
 Jenna Twedt, Kirkwood Community College  
 Maggie Westling, North Dakota State College of Science  
 Mychal White, Temple College

### ACADEMIC TOP 25

### TEAM HONOR ROLL

*Rank, Institution, Head Coach, Team GPA*

1. Colby Community College (KS), Darin Spence, 3.662
2. Central Maine Community College, Andrew Morong, 3.633
3. Northern Oklahoma College, Michael Dominguez, 3.625
4. Pima Community College (AZ), Todd Holthaus, 3.614
5. Southwestern Oregon Community College, Heather Weber, 3.532
6. Lamar Community College (CO), Delino Lewis, 3.515
7. New Mexico Junior College, Austin Mefford, 3.483
8. Minnesota West Community and Technical College, Rosalie Hayenga, 3.443
9. Folsom Lake College (CA), Ali Mollet, 3.426
10. College of Southern Nevada, Dan Savage, 3.317
11. Walters State Community College (TN), Jasmin Coleman, 3.307
- T12. Cypress College (CA), Brittany Imaku, 3.295
- T12. Napa Valley College (CA), Paul DeBolt, 3.295
14. Kirkwood Community College (IA), Kim Muhl, 3.283
15. Taft College (CA), Romeo Lagmay Jr., 3.185
16. College of the Canyons (CA), Robin Hester, 3.176
17. Sacramento City College (CA), Caleb Theodore, 3.152
18. Rio Hondo College (CA), Rene Herrera, 3.147
19. Rochester Community and Technical College (MN), Jason Bonde, 3.058

*There were only 19 institutions eligible for ranking in the two-year college division.*

# AWARDS

## HIGH SCHOOL

### COACH OF THE YEAR



**RHONDA FARNEY**

Georgetown High School (Texas)

### ASSISTANT COACH OF THE YEAR

presented by Aflac



**KAYLA REFNER**

Seton Catholic Preparatory High School

### PLAYER OF THE YEAR



**AALIYAH CHAVEZ**

Monterey High School (Texas)

### COACHES' ALL-AMERICA

Aaliyah Chavez, Monterey High School (Lubbock, TX)  
Sienna Betts, Grandview High School (Aurora, CO)  
Aaliyah Crump, Montverde Academy (Montverde, FL)  
Grace Knox, Etiwanda High School (Etiwanda, CA)  
Agot Makeer, Montverde Academy (FL)  
Hailee Swain, Holy Innocents' Episcopal School (Atlanta, GA)

Emilee Skinner, Ridgeline High School (Millville, UT)  
Mia Pauldo, Morris Catholic High (Denville, NJ)  
Jasmine Davidson, Clackamas High School (Clackamas, OR)  
Darianna Alexander, Purcell Marian High School (Cincinnati, OH)

# AWARDS

## HIGH SCHOOL (cont'd)

### HONORABLE MENTION

### COACHES' ALL-AMERICA

ZaKiyah Johnson , Sacred Heart Academy (Shelbyville, KY)

Deniya Prawl , IMG Academy (Bradenton, FL)

Divine Bourrage , Davenport North High School (Davenport, IA)

Jordan Speiser , Lutheran High School (St. Peters, MO)

Lara Somfai , IMG Academy (Bradenton, FL)

Addison Deal , Mater Dei High School (Santa Ana, CA)

Leah Macy , Bethlehem High School (Bardstown, KY)

Jaliya Davis , Blue Valley North High School (Overland Park, KS)

Kaelyn Carroll , Tabor Academy (Marion, MA)

Nyla Brooks , Bishop Ireton High School (Alexandria, VA)

Destiny Jackson , Whitney Young High School (Chicago, IL)

Aliyahna Morris , Etiwanda High School (Etiwanda, CA)

Ayla McDowell , Cypress Springs High School (Cypress Springs, TX)

Brynn McGaughy , Central Valley High School (Spokane, WA)

Kelis Fisher , IMG Academy (Bradenton, FL)

Nylah Wilson , IMG Academy (Bradenton, FL)

Isabella Hines , Eldorado High School (Albuquerque, NM)

Keeley Parks , Norman High School (Norman, OK)

Jaida Civil , Palm Bay Magnet High School (Melbourne, FL)

Leonna Sneed , Karen Wagner High School (San Antonio, TX)





**Women's Basketball Coaches Association**

4646 Lawrenceville Highway | Lilburn, Georgia 30047  
770-279-8027 | [membership@wbca.org](mailto:membership@wbca.org) | [www.WBCA.org](http://www.WBCA.org)