



Women's Basketball Coaches Association

ANNUAL REPORT

2023-24 Association Year

TABLE OF CONTENTS

Introduction.....	3
Beliefs.....	4
Leadership.....	5
Membership.....	7
Finances.....	8
Events.....	9
Mentoring.....	11
Actions.....	12
Social Media	14
Awards.....	15

INTRODUCTION

Dear member,

We are pleased to present you with this annual report for the 2023-24 association year. The report summarizes the WBCA's status and activities from Sept. 1, 2023, through Aug. 31, 2024.

It was a monumental year for our association and our sport!

The WBCA officially announced the WBCA Showcase – the association's first-ever competitive event. The WBCA Showcase will be held November 2024 at the ESPN Wide World of Sports complex at Walt Disney World Resort in Florida. The event will provide a new multi-team event (MTE) opportunity for NCAA Division I teams, a new revenue source for the WBCA, and increase exposure for the sport.

The 2024 WBCA Convention in Cleveland was a success! Attendance exceeded the expectations of the WBCA Board of Directors and staff, and those attending gave their convention experience, including the programming which began to focus on the health and wellness of coaches, rave reviews. Plans for the 2025 WBCA Convention in 2025 are already well underway. We hope to break the attendance record of 2,927 which was set in 2019 in – you guessed it – Tampa.

Meanwhile, interest in and viewership of college women's basketball reached all-time highs; the NCAA and ESPN reached a new \$115 million television rights agreement for the Division I Women's Basketball Championship and 39 other championships, which valued the women's March Madness at approximately \$65 million (more than half the total deal); and in August 2024, the NCAA Division I Board of Directors voted to introduce a proposal to pay performance units to teams that play in March Madness that will be voted on during the NCAA Convention in January 2025. If approved, it will rectify one of the greatest remaining discrepancies in the NCAA's administration of the women's and men's basketball championships.

All of this is directly attributable to more than 42 years of hard work by coaches with the support of the WBCA – your professional association – to grow our great game! We are proud of the role we play everyday in informing, educating, connecting, recognizing and representing you, as documented in this report.

Thank you for being a member.

Best regards,


Courtney Banghart
President
(2023-2025)


Danielle Donehew
Executive Director



Courtney Banghart



Danielle Donehew

EDITOR'S NOTE: Before publication of this report, the inaugural WBCA Showcase was held Nov. 21, 23, 24, 2024; and in January 2025, the Women's Basketball Participation and Performance Funds were adopted during the NCAA Convention in Nashville. Although these events did not occur during the 2023-24 association year, we mention them here for benefit of the reader. Both items will be addressed in greater detail in the 2024-25 annual report.

BELIEFS

Our mission, vision, values and objectives define who we are and aspire to be, why we exist, what we believe, and what we do. Our code of ethics establishes standards of professional conduct and our expectations of each other and ourselves.

Our Mission

The WBCA leads, serves and unites coaches of women's basketball for the good of our game and those who play it.



Our Vision

Every coach of women's basketball looks to the WBCA for the support they need to succeed professionally, grow the game, and inspire players to realize their full potential.



Our Values

Member coaches are stewards of the game, conducting themselves with professionalism and integrity, and putting foremost the safety, welfare and educational interests of the women and girls they coach. The WBCA membership, board of directors and staff conduct themselves in such a manner that the women and girls who play basketball gain self-respect, self-esteem and self-confidence, as well as educational development. These qualities empower women and girls to succeed in life and to become leaders in their professions, communities and society.



Our Objectives

- We follow both the letter and spirit of the rules and regulations that govern our sport.
- We inform, advise and guide coaches on matters that impact their profession and their sport.
- We offer networking opportunities that allow coaches to connect, encourage and mentor each other.
- We provide educational programming that enables coaches to make themselves better leaders, teachers and role models for the athletes they coach, and improve the quality and popularity of the game.
- We recognize coaches, as well as their athletes and their teams, who excel athletically and academically each year, and honor those who have made lasting contributions to the profession and sport throughout their career.
- We act as the unifying voice of coaches to the organizations that govern the sport at its various levels of competition.



Code of Ethics

Members conduct themselves professionally, according to the rules, and with civility to players, administrators, game officials, fans and each other. All members must adhere to these ethical and behavioral standards.

INTEGRITY

- We follow both the letter and spirit of the rules and regulations that govern our sport.
- We watch for actions that could influence other coaches, staff members, athletes and fans to behave in a way that is contrary to these standards.
- We report conduct or suspected conduct that is not in keeping with these standards as well as the rules and regulations that govern our sport.
- We acknowledge that winning is important, but never at the expense of sportsmanship, safety and integrity.

ATHLETE EXPERIENCE

- We place the physical and mental well-being of the women and girls who play basketball above all else; their health and safety is paramount.
- We maintain strictly professional relationships with the athletes with whom we interact.
- We respect the dignity and individuality of each person with whom we interact and promote a diverse and inclusive culture in which every individual is valued.

EDUCATION AND EMPOWERMENT

- We teach by example and instill in our athletes the fundamental values of honesty, integrity, respect, civility, self-discipline, personal responsibility and fairness.
- We educate women and girls in a manner that prepares them to succeed in life and become leaders in their communities.
- We strive in all we do to expand athlete experiences and support their academic and educational interests.

PROFESSIONALISM

- We perform with excellence and good sportsmanship and require the same of each other and our athletes.
- We commit to growing and enhancing the sport of women's basketball and seek opportunities to grow personally and professionally.
- We respect the game, fellow coaches, administrators, game officials and the women and girls we coach and teach.
- We conduct ourselves according to the WBCA values and standards and are accountable for our decisions and actions.

LEADERSHIP

The WBCA is governed by a board of directors composed of 25 officers and directors – 18 of whom are coaches – and several nonvoting consultants to the board who represent strategic partners or have expertise in areas of importance to the profession and the sport. The board selects its own members and, with the exception of the secretary and the treasurer, elects officers from among the sitting directors.

Board of Directors



Courtney Banghart
Head Coach
North Carolina
President



Kelly Barsky
Director of Athletics
UC Santa Barbara
Athletic Administrators



Kelly Black-Holmes
Assoc. General Counsel
Warner Bros. Discovery
Public Sector



Shawn Chaffin
Head Coach
Waldorf
NAIA



Cori Close
Head Coach
UCLA
Past President



Danielle Donehew
Executive Director
WBCA
Secretary



Julie Eddleman
Chief Commercial Officer
DoubleVerify
Public Sector



Jose Fernandez
Head Coach
South Florida
Vice President



Rob Higgins
Executive Director
Tampa Bay Sports Comm
Public Sector



Gene Hill
Head Coach
Georgia State
NCAA Division I



Misha Jackson
Head Coach
Emory
NCAA Division III



Romeo Lagmay
Head Coach
Taft
Two-Year College



Kathy Maguire-Stoudt
Head Coach
Rising Sun, MD
Scholastic



Mike Neighbors
Head Coach
Arkansas
NCAA Division I



Danielle O'Banion
Head Coach
Loyola, MD
NCAA Division I



Cheytoria Penny
Director of Finance
Emory
Treasurer



Julie Roe Lach
Commissioner
Horizon League
DI Commissioners



Carissa Sain
Head Coach
Illinois Tech
NCAA Division III



Dave Slifer
Head Coach
Central Missouri
NCAA Division II



Charmin Smith
Head Coach
California
NCAA Division I



Joni Taylor
Head Coach
Texas A&M
NCAA Division I



Polly Thomason
Head Coach
Hartford
NCAA Division III



Cleve Wright
Head Coach
Gannon
NCAA Division II



Steve Yang
Assistant Coach
Stephen F. Austin
Assistant Coaches



Stephanie Yelton
Head Coach
West Florida
NCAA Division II



Carol Callan^{NV}
Board Member
FIBA Americas



Liz Hollingworth^{NV}
Professor, Iowa
Faculty Athletic
Representatives



Lynn Holzman^{NV}
Vice President of
Women's Basketball
NCAA



Binh Nguyen^{NV}
Director, Academic &
Membership Affairs
NCAA

NV-Non-voting member

LEADERSHIP

The board of directors employs an executive director who manages the day-to-day affairs of the association. The executive director also serves as the association’s secretary and is a member of the board and executive committee. The executive director employs and contracts with a team of professionals in their respective fields of expertise to assist with the administration of the association’s programs and initiatives.

WBCA Team



Danielle Donehew
Executive Director



Mary Ellen Gillespie
Deputy Director



Marcellus Barksdale
Senior Manager
Learfield



Shayla Black
Manager of Membership
Associations International



Abby Davis
Events Manager
Associations International



Darryl Morton
General Manager
Learfield



Jessica Ramberg
Director of Content
and Digital Marketing



Dana Refling
Executive Assistant



Daniella Trujillo
Senior Manager of
Events & Awards



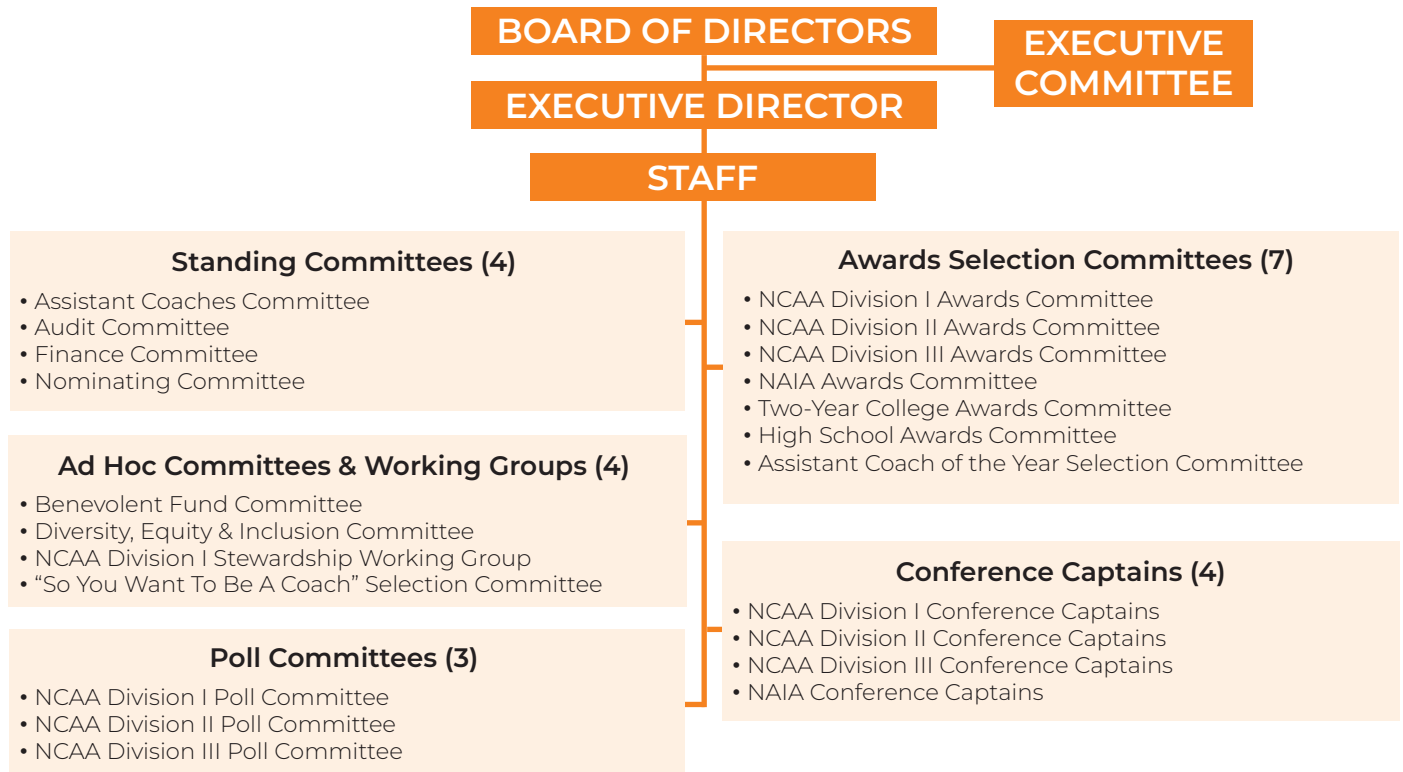
Jess Turner
Division III All-Star
Game/Special Projects



Jack Watford
Director of
Communications

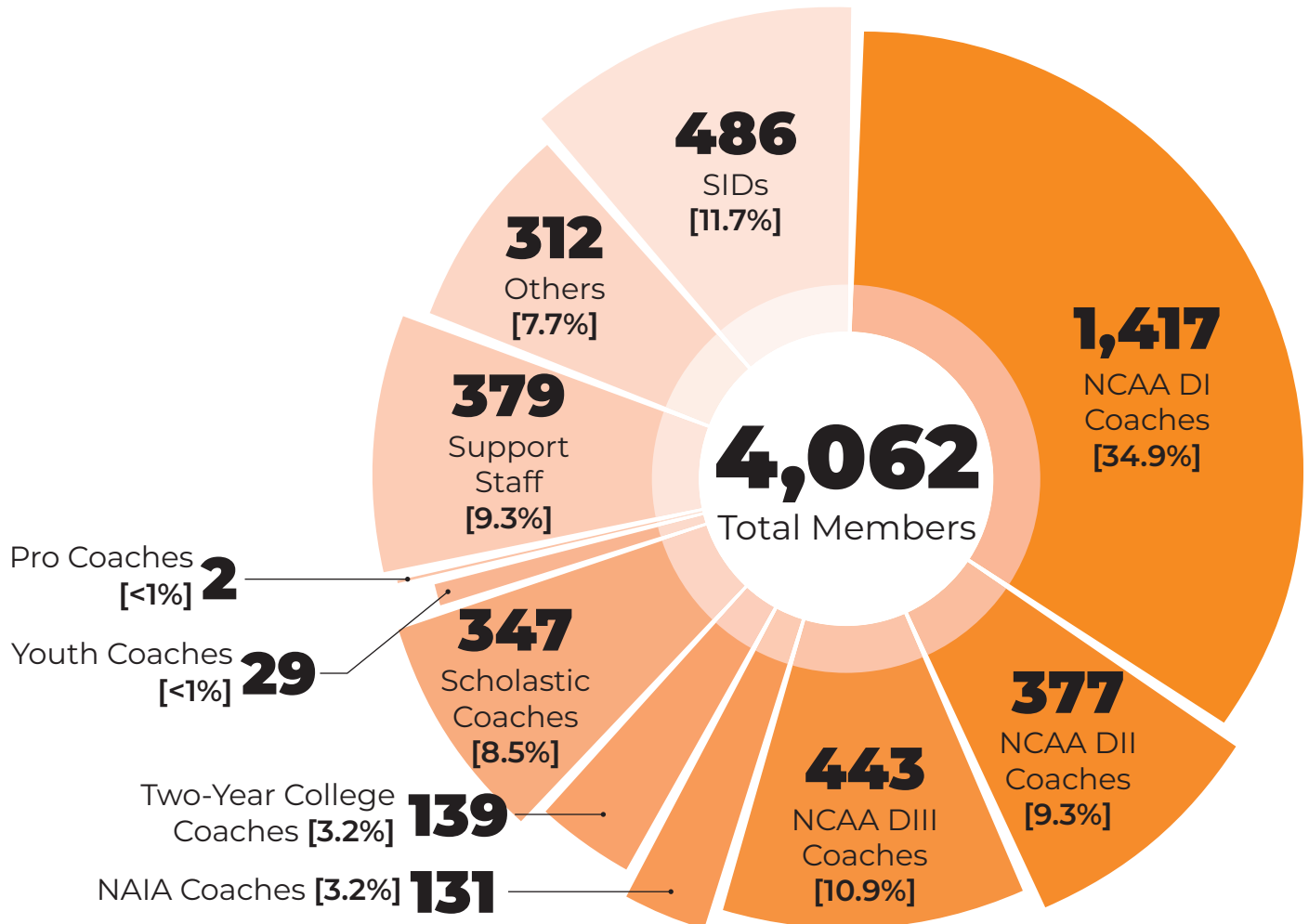
Susan Bangs, CPA/Accountant | Dale Gale, Advisor | James Hill, NCAA Division II/III Coaches Poll Coordinator | Ann Schildhammer, Legal Counsel

Organizational Structure



MEMBERSHIP

WBCA membership during the 2023-24 association year was 4,062. Membership is composed of active coaches at the professional, collegiate, scholastic and non-scholastic youth levels, as well as administrators, non-coach staff, sports information directors, inactive and retired coaches, and supporters of the profession and the sport.



NOTE: Coaches include directors of basketball operations. Scholastic coaches include high school, junior high school, middle school and elementary school. Youth coaches include AAU and club. Support staff includes ADs, SWAs, videographers, grad assistants, managers, etc. Others includes international, inactive, retired coaches; business, strategic partners; athletes, fans, media, etc. SIDs include sports information directors who are registered for membership by their institution's head coach.

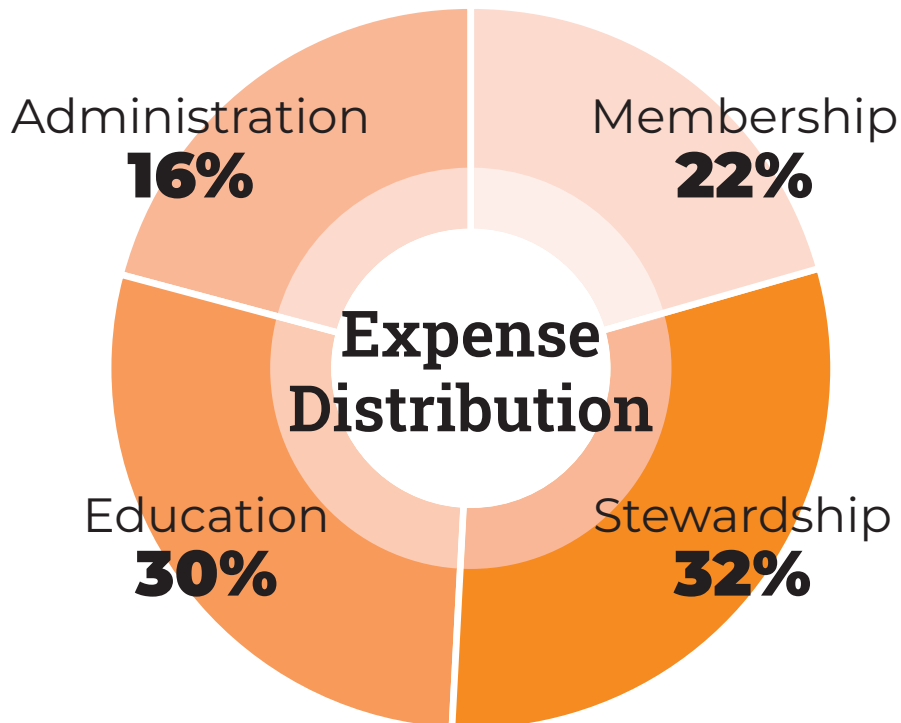
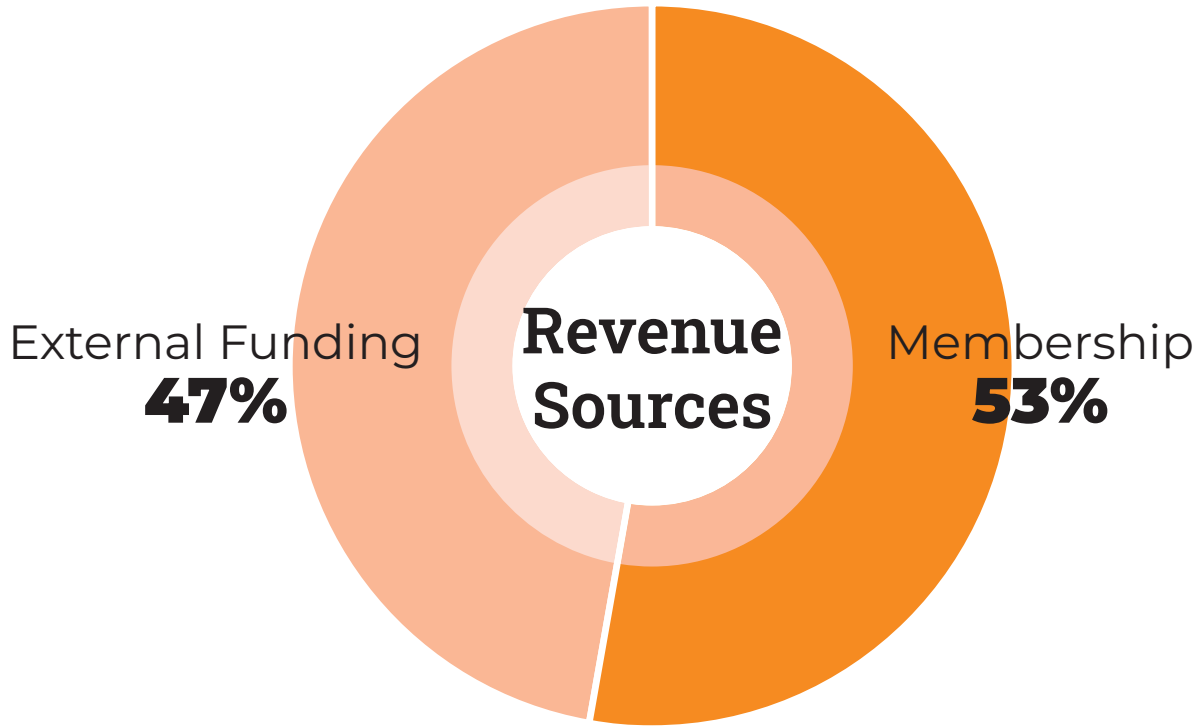
10-Year Trend

Year	Members	Year	Members
2023-24	4,062	2018-19	4,613
2022-23	3,833	2017-18	4,273
2021-22*	3,547	2016-17	4,226
2020-21*	3,243	2015-16	3,957
2019-20	4,252	2014-15	3,977

*-pandemic year

FINANCES

The association's income of approximately \$2.6 million during the 2023-24 fiscal year was sourced almost equally from revenues collected directly or indirectly from members such as membership dues, convention registrations, Women's Final Four ticket sales, commissions and exhibits; and external sources which include corporate sponsorships, strategic partnerships and donations.



EVENTS

WBCA CONVENTION



Photo by Nathan Kubala



Photo by Jack Watford

Convention Attendance

Year	Attendance	Location
2024	2,258	Cleveland
2023	2,583	Dallas
2022	2,242	Minneapolis
2019	2,927	Tampa
2018	2,357	Columbus
2017	2,475	Dallas
2016	2,197	Indianapolis
2015	2,124	Tampa
2014	2,383	Nashville
2013	2,291	New Orleans

*-2020, 2021 conventions canceled due to COVID-19.



The 2024 WBCA Convention offered the 2,258 members who attended almost 60 hours of educational programming in addition to divisional business meetings and the always-popular welcome party which this year was held in the Rock n' Roll Hall of Fame. More than 80% of the attendees responding to the post-event survey said they were satisfied to very satisfied with their overall convention experience and found the educational programming to be relevant. Over three-quarters of them said they planned to attend the 2025 convention in Tampa.



Photo by Nathan Kubala



Photo by Nathan Kubala

EVENTS

WBCA SHOWCASE



Photo by Disney Sports

Flanked by Minnie and Mickey Mouse, (from left) Jose Fernandez, USF head coach and WBCA vice president; Lauren Eads, COO, Boardwalk Sports; Danielle Donehew, executive director, WBCA; Rich Ensor, CEO, Boardwalk Sports; and Jorge Senior, director sports planning and development, Walt Disney World; pose at the ESPN Wide World of Sports Complex at Walt Disney World Resort in Florida.

The WBCA officially announced on Feb. 6, 2024, that it will hold its first-ever competitive event – the WBCA Showcase – on Nov. 21, 23 and 24 at ESPN Wide World of Sports Complex at Walt Disney World Resort in Florida. The event will offer NCAA Division I teams a new multi-team event opportunity with a first-class experience, increase exposure for the sport, and introduce a new revenue stream for the association.

On Aug. 15, 2024, the WBCA announced that Georgia, Marshall, Penn State and Tulsa would participate in the inaugural MTE event on Nov. 21 and 23 with a bonus doubleheader featuring Jacksonville, Louisville, Mississippi State and South Florida on Nov. 23.



ESPN WIDE WORLD OF SPORTS COMPLEX
WALT DISNEY WORLD. Resort

MENTORING

In addition to the organic networking opportunities that occur during its yearly convention, the WBCA continues to connect members with each other through virtual programs such as the Coach to Coach Mentoring Program and the Beyond the Box peer-to-peer program, as well as the popular in-person Mentoring Madness session during convention.

Coach to Coach Mentoring Program



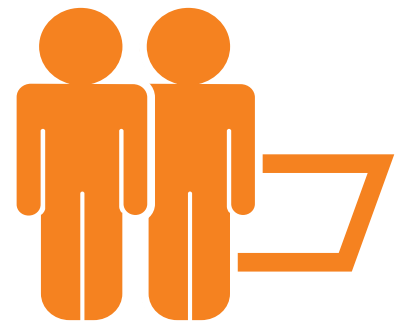
Launched during the 2015-16 membership year, the Coach to Coach Mentoring Program is a traditional, small-group mentoring program designed to bring coaches and staffs together during the basketball season to share ideas, confront challenges and learn from each other's experiences. The program provides a structured platform – monthly conference calls – for organic, open conversation between experienced coaches (who serve as mentors) and those who have recently began their coaching journeys (mentees).

2023-24 Association Year Participation

- Huddles: 41
- Mentors: 41
- Mentees: 84
- Total participants: 125

Beyond the Box Peer-to-Peer Program

The WBCA launched the Beyond the Box peer-to-peer program during the 2019-20 membership year for the benefit of seasoned coaches with three or more years of experience in their current roles. Coaches are paired with others at the same level (e.g., head coach with other head coaches, assistant coach with other assistant coaches, etc.) to connect and discuss things such as difficult situations, personal interest topics, coaching journeys and X's and O's.



2023-24 Association Year Participation

- Huddles: 32
- Facilitators: 32
- Participants: 88
- Total participants: 120

Mentoring Madness Session



MENTORING MADNESS

First held during the 2016 WBCA Convention, Mentoring Madness is an in-person, fast-paced, small-group mentoring session. Participants rotate from table to table for 20-minute mini sessions during which they discuss pertinent issues with a variety of head coaches. The experience helps to build everyone's professional network and opens the door to a convention full of brainstorming and sharing.

2024 Convention Participation

- Mentors: 40
- Participants: 201
- Total participants: 241

ACTIONS

PROGRAMS & INITIATIVES

ADVOCACY & GOVERNANCE

The WBCA continued to serve as the unified voice of member coaches to governing bodies of the sport during the 2023-24 association year, advocating successfully for legislative proposals supported by NCAA Division I coaches:

- Blanket waiver to allow student managers to also serve as male practice players.
- Male practice players can receive expenses to travel to away games.
- Transfer portal window reduced from 45 to 30 days, closing on or before May 1.
- All six coaches may recruit off campus, but only four coaches at any one time.
- Unlimited institutional official visits.
- Blanket waiver exempting certain events from the 10 days coaches may recruit internationally during June, July and August.
- Permitting in-person, off-campus contact with two-year college prospects during the September and March contact periods.
- Allowing a DI team to play one game against another DI team on a foreign tour.



EDUCATION & PROFESSIONAL DEVELOPMENT



The Next Generation Institute welcomed a 32-member class to the two-day program held during the 2024 WBCA Convention in Cleveland. Launched in 2023, NGI is the association's newest educational program. NGI is for experienced associate/assistant coaches who aspire to become a head coach at the NCAA Division I, II or III levels. The program consists of a curriculum that focuses on the CEO attributes a modern-day head coach needs to lead a program and be a problem-solver in today's ever-changing landscape of higher education and the enterprise of intercollegiate athletics.

A class of 55 attended the "So You Want To Be A Coach" program during the 2024 WBCA Convention in Cleveland. In its 21-year history, more than 1,100 graduating senior college women's basketball players have completed the WBCA's longest-running education program. The "So" program increases the understanding and application of skills necessary to secure coaching positions in women's basketball, increases the understanding and awareness of competencies necessary for success in coaching, introduces female basketball players to coaches and administrators, and raises awareness of the existing talent pool of female basketball players who have a passion and interest in coaching the game of women's basketball.



The WBCA once again partnered with the National Association of Basketball Coaches (NABC) to offer the WBCA-NABC Coaches Forum which features panels of college basketball leaders discussing issues and topics relevant to the sport. There were two Coaches Forum presentations during the 2023-24 association year:

- Sept. 27, 2023 — Assistant Coach Development
- June 26, 2024 — Navigating and Avoiding Burnout

ACTIONS

PROGRAMS & INITIATIVES (cont'd)

DIVERSITY, EQUITY AND INCLUSION



The WBCA continues to be an industry leader in efforts to improve gender equity. At the conclusion of the 2023-24 season, the NCAA held the inaugural Women's Basketball Invitation Tournament (WBIT) to balance postseason opportunities within the NCAA for women and men. On Aug. 7, 2024, the NCAA Division I Board of Directors voted to introduce a proposal to create a Women's Basketball Performance Fund and Women's Basketball Equal Conference Fund based on participation and performance in the NCAA Division I Women's Basketball Championship. The new funds, if adopted by the NCAA Division I membership at the 2025 NCAA Convention, will resolve a major gender equity discrepancy between the NCAA's administration of the women's and men's championships.

The WBCA continued its partnership with RISE, a national nonprofit organization that educates and empowers the sports community to eliminate racial discrimination, champion social justice and improve race relations. RISE conducted an online virtual module on Inclusive Leadership on Sept. 20, 2023. RISE also conducted three sessions during the 2024 convention in Cleveland:

- Cultural Competence (increasing cultural awareness and knowledge)
- Privilege (recognizing your own privilege)
- Actor, Ally, Accomplice (the pursuit of racial equality)



CIVIC ENGAGEMENT

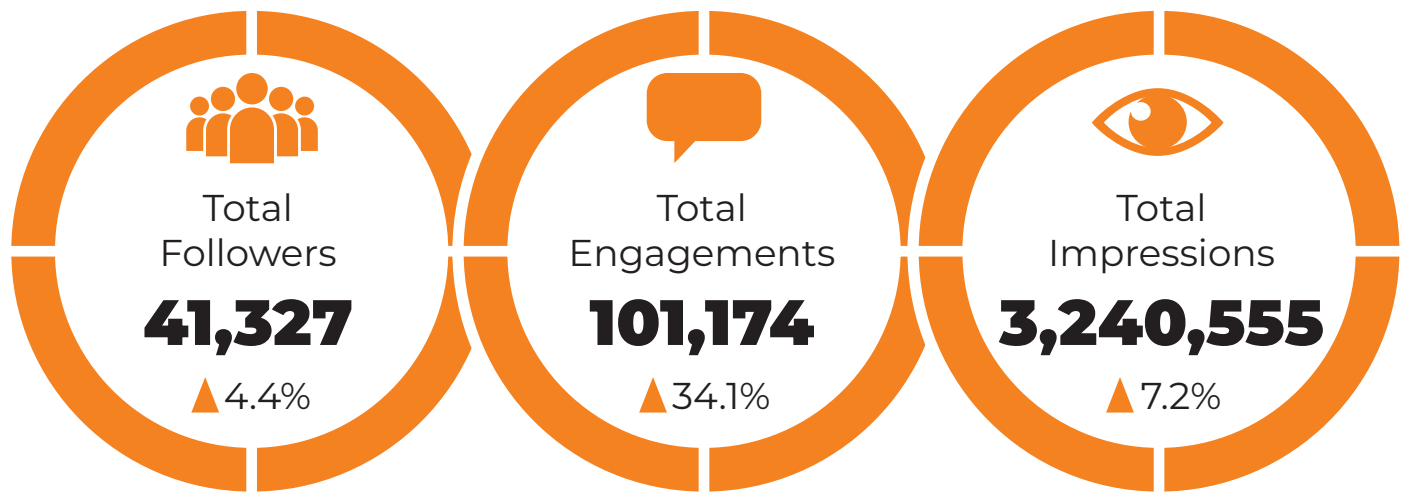
The WBCA once again partnered with the All In Campus Democracy Challenge, the National Association of Basketball Coaches, and The Team in the 2024 Coaches' Pledge initiative, which shares nonpartisan engagement resources with athletes and provides an opportunity for athletes to register to vote. WBCA board members Gene Hill, head coach, Georgia State University, and Charmin Smith, head coach, University of California, Berkeley, represented the WBCA on the Coaches' Voter Education Task Force. Participating women's basketball coaches were (alphabetical by institution):



- Arkansas-Fort Smith — Ryan McAdams
- Ave Maria — Jillian Miller
- Carleton — Tammy Metcalf-Filzen
- Chandler-Gilbert CC — Fletcher Brown
- Dominican (California) — Tim Lakose
- Hartford — Polly Thomason
- Harvard — Ali Sanders
- Hawaii — Laura Beeman
- Holy Cross — Clare Fitzpatrick
- Hope — Brian Morehouse
- Macalester — Katie Kollar
- Middlebury — KJ Krasco
- Minnesota State Mankato — Emilee Thiesse
- Minnesota-Twin Cities — Lindsay Whalen
- NJIT — Mike Lane
- Oklahoma State — Robyne Bostick
- Pepperdine — Brian Rosario
- Sacred Heart — Jess Mannetti
- Seton Hall — Tony Bozzella
- Shenandoah — Melissa Smeltzer-Kraft
- SIU Edwardsville — Sam Quigley Smith
- South Carolina Upstate — Nicole Ambrose
- UC-Irvine — Tamara Inoue
- UW-Parkside — Jen Conely
- UW-River Falls — Shelby Lyman
- Vanderbilt — Yvonne Hawkins
- Virginia Union — Tierra Terry
- Wisconsin — Marisa Moseley

SOCIAL MEDIA

Total followers, engagements and impressions on the three main social media platforms increased during the 2023-24 association year. More importantly, the overall engagement rate also increased to 3.1% – a 24.3% improvement year over year. The engagement rate measures the amount of interaction a piece of content gets compared to how many people simply see it, and is a better indicator of brand affinity, credibility, efficacy, and visibility; strength of relationship with the audience; and how well content resonates regardless of how many followers you have.



WBCA gained online followers on all three platforms during the 2023-24 association year. Instagram led the way with **1,029** new followers.

Total engagements, which include likes, comments, replies, shares and retweets on posts, soared **34.1%**. The engagement rate also increased to **3.1%**, solidly within the desired 1% to 5% range.

This is how many times people saw the WBCA brand across all platforms. The increase in total engagements (e.g., reposts and shares) resulted in an increase in total impressions as well.



FACEBOOK

Followers
6,594
Page Likes
5,925
Engagements
35,397
Engagement Rate
7.4%
Impressions
480,720



INSTAGRAM

Followers
6,012
Likes on Posts
15,254
Engagements
17,392
Engagement Rate
3.4%
Impressions
510,824



TWITTER/X

Followers
28,721
Likes on Posts
8,604
Engagements
48,385
Engagement Rate
2.2%
Impressions
2,249,011

Numbers do not include WBCA LinkedIn and YouTube accounts.

SOURCE: Sprout Social

AWARDS

The WBCA continues to operate the most extensive recognition program of any coaches association. During the 2023-24 association year, the WBCA presented 17 different awards or honors to more than 700 individuals and teams.

2024 NATIONAL CHAMPIONS



South Carolina head coach Dawn Staley raises the crystal ball from the WBCA Coaches' Trophy after the Gamecocks won the 2024 NCAA Division I national championship.

NCAA DIVISION II

School: Minnesota State University

Head Coach: Emilie Thiesse

NCAA DIVISION III

School: New York University

Head Coach: Meg Barber

NAIA

School: Dordt University

Head Coach: Bill Harmsen

NCCAA DIVISION I

School: Grace College

Head Coach: Dan Davis

NCCAA DIVISION II

School: Simmons College of Kentucky

Head Coach: Earl Ruffin

USCAA DIVISION I

School: Salem University

Head Coach: Nikayla Edgell

USCAA DIVISION II

School: Christendom College

Head Coach: Mary Minnick

NJCAA DIVISION I

School: Hutchinson Community College (KS)

Head Coach: John Ontjes

NJCAA DIVISION II

School: Kirkwood Community College (IA)

Head Coach: Kim Muhl

NJCAA DIVISION III

School: Minnesota West Community and Technical College

Head Coach: Rosalie Hayenga-Hostikka

AWARDS

ASSOCIATION-WIDE

BETTY F. JAYNES LIFETIME ACHIEVEMENT AWARD



RICH ENSOR

Commissioner/Metro Atlantic Athletic Conference from 1988–2023

“Rich Ensor is a staunch guardian of the game and has been a valuable advisor to WBCA leadership for decades. He also has been a champion for and an ally to our coaches and their profound role in serving student-athletes. A national leader, Rich served as a member of the WBCA Board of Directors and finance committee for over a decade, supporting every executive director to date – Betty Jaynes, Beth Bass, and now, me. His counsel is wise and his impact on the game and the coaching profession is immense.”

– Danielle Donehew, WBCA Executive Director

CAROL ECKMAN INTEGRITY IN COACHING AWARD



CORI CLOSE

Head Coach/UCLA

ADMINISTRATOR OF THE YEAR



DEJUENA CHIZER

Exec. Sr. Assoc. Athletics Director/
University of Houston

MEL GREENBERG MEDIA AWARD



PAT LOWRY

Producer/ESPN

AWARDS

ASSOCIATION-WIDE (cont'd)



Jenna Andersen, Assistant Coach, Marietta College
Dyandria Anderson, Assistant Coach, University of North Carolina-Asheville
Patrick Bain, Assistant Coach, Wright State University
Halie Bergman, Assistant Coach, University of Nevada
Alex Berman, Assistant Coach, Emory University
Haley Blankinship, Assistant Coach, Texas A&M International University
Kaelynn Boyd, Assistant Coach, University of Texas at Arlington
Shelby Boyle, Assistant Coach, Boston College
Erika Brown, Assistant Coach, Fairfield University
Paige Corkins, Assistant Coach, College of the Holy Cross
Symone Denham, Assistant Coach, Bradley University
Sadie Edwards, Assistant Coach, Baylor University
Brian Ehresman, Assistant Coach, Illinois Wesleyan University
Max Ethridge, Assistant Coach, Maryville University–St. Louis
Ashton Feldhaus, Associate Head Coach, Eckerd College
Haley Froelich, Assistant Coach, Clarke University

Erin Hughes, Assistant Coach, Washington & Lee University
Abby Kelly, Assistant Coach, Bowdoin College
Erica McCall, Assistant Coach, Stanford University
Brittney McNamara, Head Coach, Midview High School
Kabrina Merriweather, Assistant Coach, University of Cincinnati
Meredith Mesaris, Head Coach, Vassar College
Ashton Millender, Assistant Coach, DePaul University
Jillian Miller, Assistant Coach, Ave Maria University
John Montello, Assistant Coach, Indiana Purdue University-Indianapolis
Harry Rafferty, Assistant Coach, University of Michigan
Janelle Silver-Martin, Assistant Coach, Morgan State University
Erin Sinnott, Assistant Coach, University at Buffalo
Sadie Thramer, Assistant Coach, South Dakota State University
Alexis Uffmann, Assistant Coach, Valdosta State University
Shelby Zoeckler, Assistant Coach, Cleveland State University



Date listed is the date the milestone was achieved.

1,200 wins

Tara VanDerveer, Stanford University, Jan. 7, 2024

800 wins

Karen Self, Seton Catholic Preparatory (Chandler, AZ), Nov. 21, 2023

Dave Slifer, University of Central Missouri, Feb. 10, 2024

600 wins

Patty Evers, East Bladen High School (NC), Feb. 2, 2024

500 wins

Scott Allen, St. Paul VI Catholic High School (Fairfax, VA), Feb. 10, 2024

Anthony Bozzella, Seton Hall University, Nov. 22, 2023

400 wins

Vic Schaefer, University of Texas, Feb. 14, 2024

Jeff Soderquist, John Brown University, Nov. 30, 2023

300 wins

Lynn Hersey, Smith College, Feb. 3, 2024

Todd Starkey, Kent State University, Jan. 27, 2024

Tammie Tills, Lake Forest College, Feb. 17, 2024

200 wins

Zenarae Antoine, Texas State University, Feb. 10, 2024

Kim Caldwell, Marshall University, Jan. 6, 2024

Christine Clancy, Washington and Lee University, Jan. 24, 2024

Keith Ferguson, Northeastern State University, Dec. 2, 2023

Jeffery Homziak, Hopewell High School (Aliquippa, PA), Dec. 2, 2023

Emilee Theisse, Minnesota State University, Mankato, Dec. 1, 2023

AWARDS

NCAA DIVISION I

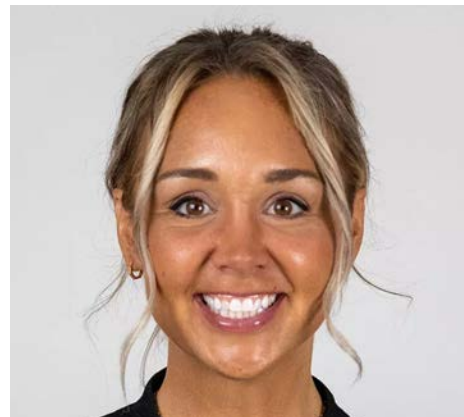
COACH OF THE YEAR



DAWN STALEY

University of South Carolina

Spalding Maggie Dixon
ROOKIE COACH OF THE YEAR



KIM CALDWELL

Marshall University

ASSISTANT COACH OF THE YEAR
presented by Aflac



KATE PAYE

Stanford University

COACH OF THE YEAR FINALISTS

Jennie Baranczyk, University of Oklahoma
Lisa Bluder, University of Iowa
Kenny Brooks, Virginia Tech
Lisa Fortier, Gonzaga University
Lindy La Rocque, University of Nevada, Las Vegas

Felisha Legette-Jack, Syracuse University
Kevin McGuff, Ohio State University
Jeff Mittie, Kansas State University
Yolett McPhee-McCuin, University of Mississippi
Dawn Staley, University of South Carolina

AWARDS

NCAA DIVISION I (cont'd)

DEFENSIVE PLAYER OF THE YEAR



KAMILA CARDOSO

University of South Carolina

FRESHMAN OF THE YEAR

presented by adidas



JUJU WATKINS

University of Southern California

WADE TROPHY



CAITLIN CLARK

University of Iowa

COACHES' ALL-AMERICA

Madison Booker, University of Texas
Cameron Brink, Stanford University
Paige Bueckers, University of Connecticut
Kamilla Cardoso, University of South Carolina
Caitlin Clark, University of Iowa

Aaliyah Edwards, University of Connecticut
Hannah Hidalgo, University of Notre Dame
Elizabeth Kitley, Virginia Tech
Angel Reese, Louisiana State University
JuJu Watkins, University of Southern California

AWARDS

NCAA DIVISION I (cont'd)

HONORABLE MENTION COACHES' ALL-AMERICA

Georgia Amooore, Virginia Tech
Raegan Beers, Oregon State University
Lauren Betts, University of California, Los Angeles
Jessica Carter, Mississippi State University
Kaitlyn Chen, Princeton University
Delanie Crawford, University of Tulsa
Audi Crooks, Iowa State University
Yvonne Ejim, Gonzaga University
Dyaisha Fair, Syracuse University
Lauren Gustin, Brigham Young University
McKenna Hofschild, Colorado State University
Mackenzie Holmes, Indiana University
Abbey Hsu, Columbia University
Kiki Iriafe, Stanford University
Rickey Jackson, University of Tennessee
Taiyanna Jackson, University of Kansas
Azhiaha James, North Carolina State University
Emani Jefferson, Florida Gulf Coast University
Deja Kelly, University of North Carolina
Ta'Niya Latson, Florida State University
Ayoka Lee, Kansas State University
Cotie McMahon, Ohio State University
Aneesah Morrow, Louisiana State University
Lucy Olsen, Villanova University
Charisma Osborne, University of California, Los Angeles
Te-Hina Paopao, University of South Carolina
Laila Phelia, University of Michigan
Alissa Pili, University of Utah
Temira Poindexter, University of Tulsa
JJ Quinerly, West Virginia University
Kiki Rice, University of California, Los Angeles
Saniya Rivers, North Carolina State University
Sara Scalia, Indiana University
Honesty Scott-Grayson, Auburn University
Shyanne Sellers, University of Maryland
Jacy Sheldon, Ohio State University
Jaylyn Sherrod, University of Colorado
Skylar Vann, University of Oklahoma
Payton Verhulst, University of Oklahoma
Chellia Watson, University of Buffalo
Maddy Westbeld, University of Notre Dame
Desi-Rae Young, University of Nevada, Las Vegas

ACADEMIC TOP 25 TEAM HONOR ROLL

Rank, Institution, Head Coach, Team GPA

1. Youngstown State University, John Nicolais, 3.868
2. Western Illinois University, JD Gravina, 3.866
3. University of Maine, Amy Vachon, 3.856
4. Northern Illinois University, Lisa Carlsen, 3.811
5. Belmont University, Bart Brooks, 3.803
- T6. University of Northern Iowa, Tanya Warren, 3.780
- T6. University of Wisconsin-Green Bay, Kevin Borseth, 3.780
8. University of Missouri, Robin Pingeton, 3.772
9. Drake University, Allison Pohlman, 3.736
10. University of Toledo, Tricia Cullop, 3.724
11. Abilene Christian University, Julie Goodenough, 3.715
12. Merrimack College, Kelly Morrone, 3.696
13. Davidson College, Gayle Fulks, 3.679
14. California Baptist University, Daniel Cook, 3.675
15. University of North Florida, Erika Lambert, 3.674
16. University of Wyoming, Heather Ezell, 3.672
17. South Dakota State University, Aaron Johnston, 3.652
18. Houston Christian University, Donna Finnie, 3.636
19. Northern Arizona University, Loree Payne, 3.629
20. Saint Peter's University, Jennifer Leedham, 3.628
21. Gonzaga University, Lisa Fortier, 3.623
22. Boise State University, Gordy Presnell, 3.614
23. Harvard University, Carrie Moore, 3.613
24. Fairleigh Dickinson University, Stephanie Gaitley, 3.606
25. New Jersey Institute of Technology, Mike Lane, 3.595

SPECIAL MENTION

Lafayette College, Kia Damon-Olson, 3.594
University of Portland, Michael Meek, 3.580
University of North Carolina at Charlotte, Tomekia Reed, 3.573
University of Minnesota, Dawn Plitzuweit, 3.550
Robert Morris University, Chandler McCabe, 3.540
Holy Cross University, Maureen Magarity, 3.535
Drexel University, Amy Mallon, 3.533
Bradley University, Kate Popovec-Goss, 3.529
DePaul University, Doug Bruno, 3.529
University of Richmond, Aaron Roussell, 3.528
University of Wisconsin-Milwaukee, Kyle Rechlicz, 3.527
Western Michigan University, Shane Clippell, 3.522
University at Albany, Colleen Mullen, 3.521

Continued on NEXT PAGE

AWARDS

NCAA DIVISION I (cont'd)

ACADEMIC TOP 25 SPECIAL MENTION

Continued from PREVIOUS PAGE

Stonehill College, Trisha Brown, 3.520
University of California, Santa Barbara, Renee Jimenez, 3.519
University of Illinois, Shauna Green, 3.509
Bowling Green State University, Fred Chmiel, 3.508
East Tennessee State University, Brenda Mock Brown, 3.506
Valparaiso University, Mary Evans, 3.506
University of the Pacific, Bradley Davis, 3.504
Texas A&M University-Corpus Christi, Royce Chadwick, 3.495
Fresno State University, Jaime White, 3.494
Yale University, Dalila Eshe, 3.493
Lehigh University, Addie Micir, 3.481
Cleveland State University, Chris Kielsmeier, 3.480
Fairfield University, Carly Thibault, 3.475
Kent State University, Todd Starkey, 3.471
Florida Gulf Coast University, Karl Smesko, 3.471
Iona University, Angelika Szumilo, 3.464
University of Utah, Lynne Roberts, 3.446
Binghamton University, Bethann Shapiro Ord, 3.438
Creighton University, Jim Flanery, 3.428
Indiana University, Teri Moren, 3.428
Eastern Washington University, Joddie Gleason, 3.421
Colgate University, Ganiyat Adeduntan, 3.420
Elon University, Charlotte Smith, 3.419
Georgetown University, Darnell Haney, 3.419
Villanova University, Denise Dillon, 3.417
Vanderbilt University, Shea Ralph, 3.416
La Salle University, Mountain MacGillivray, 3.413
University of San Diego, Cindy Fisher, 3.412
Florida State University, Brooke Wyckoff, 3.410
Montana State University, Tricia Binford, 3.409
Saint Joseph's University, Cindy Griffin, 3.401
Stanford University, Tara VanDerveer, 3.401
Iowa State University, Bill Fennelly, 3.389
University of Alabama, Kristy Curry, 3.386
Longwood University, Erika Lang-Montgomery, 3.383
Illinois State University, Kristen Gillespie, 3.380
University of South Florida, Jose Fernandez, 3.377
Lipscomb University, Lauren Sumski, 3.372
Ohio State University, Kevin McGuff, 3.372
University of Denver, Doshia Woods, 3.365

University of California, Irvine, Tamara Inoue, 3.362
Syracuse University, Felisha Legette-Jack, 3.358
University of California, Berkeley, Charmin Smith, 3.339
Georgia State University, Gene Hill, 3.329
University of New Hampshire, Megan Shoniker, 3.328
University of Iowa, Lisa Bluder, 3.327
Tulane University, Ashley Langford, 3.320
University of Louisville, Jeff Walz, 3.319
University of Nevada, Amanda Levens, 3.312
Hofstra University, Danielle Santos Atkinson, 3.308
Bethune-Cookman University, Janell Crayton, 3.303
Rider University, Lynn Milligan, 3.302
University of Tennessee, Kellie Harper, 3.301
Seton Hall University, Anthony Bozzella, 3.298
Portland State University, Chelsey Gregg, 3.298
University of Alabama at Birmingham, Randy Norton, 3.297
Liberty University, Carey Green, 3.296
Kansas State University, Jeff Mittie, 3.281
Penn State University, Carolyn Kieger, 3.281
University of Pennsylvania, Mike McLaughlin, 3.272
St. Bonaventure University, James Crowley, 3.250
University of Massachusetts, Mike Leflar, 3.246
University of Kansas, Brandon Schneider, 3.245
Sacramento State University, Aaron Kallhoff, 3.243
University of Tulsa, Angie Nelp, 3.239
University of Nevada, Las Vegas, Lindy La Rocque, 3.238
University of Colorado, JR Payne, 3.225
Niagara University, Jada Pierce, 3.222
Southern Illinois University, Kelly Bond-White, 3.220
Oklahoma State University, Jacie Hoyt, 3.216
Arizona State University, Natasha Adair, 3.188
Brigham Young University, Amber Whiting, 3.178
West Virginia University, Mark Kellogg, 3.163
University of Central Florida, Sytia Messer, 3.156
Texas A&M University-Commerce, Valerie King, 3.151
University of Oklahoma, Jennie Baranczyk, 3.139
University of Illinois Chicago, Ashleen Bracey, 3.129
University of Notre Dame, Niele Ivey, 3.122
University of Massachusetts Lowell, Denise King, 3.117
Rutgers University, Coquese Washington, 3.094
University of Maryland, Brenda Frese, 3.087
St. John's University, Joe Tartamella, 3.078
Georgia Southern University, Anita Howard, 3.046
University of North Carolina, Courtney Banghart, 3.012
Texas Tech University, Krista Gerlich, 3.009
North Texas University, Jason Burton, 3.005

AWARDS

NCAA DIVISION II

COACH OF THE YEAR



HANA HADEN

Georgia Southwestern University

ASSISTANT COACH OF THE YEAR

presented by Aflac



BRITTANY BATT

Gannon University

PLAYER OF THE YEAR



SAMANTHA PIROSKO

Gannon University

COACH OF THE YEAR FINALISTS

LeAnn Freeland, Nova Southeastern University
Hana Haden, Georgia Southwestern State University
Beth Jillson, Texas Woman's University

Kari Pickens, Ashland University
Thomas Shirley, Thomas Jefferson University
Jennifer Smith, Lock Haven University of Pennsylvania

AWARDS

NCAA DIVISION II (cont'd)

COACHES' ALL-AMERICA

Kola Bad Bear, Montana State University-Billings
Joey Batt, Minnesota State University-Mankato
Kalifa Ford, Valdosta State University
Ashley Ingram, Texas Woman's University
Samantha Pirosko, Gannon University
Annie Roshak, Ashland University
Reese Schaaf, Drury University
Adriana Timberlake, Southern New Hampshire University
Lauryn Vieira, Eckerd College
Braelyn Wykle, Carson-Newman University

HONORABLE MENTION

Rylie Bisballe, Grand Valley State University
Raiana Brown, Texas A&M International University
Kalaya Buggs, California State Polytechnic University-Pomona
Keeley Carter, Trevecca Nazarene University
Alyssa DeAngelo, Fairmont State University
Grace Foster, Lubbock Christian University
Mallory Hampton, Lee University
Iemyiah Harris, Miles College
Sage Hawley, Harding University
Emily Hege, Wingate University
Kelly Heimbürger, Azusa Pacific University
Valerie (Sunny) Huerta, Central Washington University
Leah Johnson, West Chester University of Pennsylvania
Briana Lee, American International College
Alisha Little, Colorado State University-Pueblo
Brooke Littrell, University of Central Missouri
Diamond McDowell, Anderson University
Zoe Miller, Ashland University
Olivia Reed, Colorado Mesa University
Nicole Scales, Nova Southeastern University
Lexie Schneider, University of Mary
Molly Stokes, Assumption University
Lauryn Taylor, Francis Marion University
Dejah Terrell, Pennsylvania Western University-California
Lyrik Thorne, Catawba College
Katie Wagner, Fort Hays State University
Brooke Walling, Western Washington University
Emilee Weakley, Frostburg State University
Maggie Whitmore, Bentley University
Sam Yench, Thomas Jefferson University

ACADEMIC TOP 25 TEAM HONOR ROLL

Rank, Institution, Head Coach, Team GPA

1. Ashland University, Kari Pickens, 3.875
2. St. Cloud State University, Lori Fish, 3.847
3. Montana State University Billings, Kevin Woodin, 3.824
4. Texas Woman's University, Beth Jillson, 3.810
5. Westminster University, Asami Morita, 3.802
6. Lubbock Christian University, Steve Gomez, 3.801
7. Chaminade University, Michael Edwards, 3.794
8. Upper Iowa University, Justin Maass, 3.792
9. Henderson State University, Jill Thomas, 3.786
10. Tiffin University, Joshua Mason, 3.773
11. Eckerd College, Paul Honsinger, 3.770
12. West Liberty University, Kyle Cooper, 3.763
13. Fort Hays State University, Talia Kahrs, 3.755
14. Maryville University, Brita Hand, 3.724
15. St. Thomas Aquinas College, Bill Cleary, 3.719
16. Kutztown University, Janet Malouf, 3.718
17. University of Central Missouri, David Slifer, 3.716
18. Pace University, Carrie Seymour, 3.713
19. Chestnut Hill College, Reggie Hill, 3.692
20. Embry-Riddle Aeronautical University (FL), Lisa Wilson, 3.688
21. Lee University, Marty Rowe, 3.668
22. Post University, Courtney Burns, 3.665
23. Wingate University, Ann Hancock, 3.663
24. Southern New Hampshire University, Karen Pinkos, 3.650
25. Colorado Mesa University, Taylor Wagner, 3.646

SPECIAL MENTION

Southwest Minnesota State University, Tom Webb, 3.641
Rockhurst University, Larry Park, 3.635
Point Loma Nazarene University, Charity Elliott, 3.635
Northwestern Oklahoma State University, Tasha Diesselhorst, 3.633
Emory & Henry College, Jaclyn Dickens, 3.625
Missouri University of Science and Technology, Kira Carter, 3.619
McKendree University, Kari Kerkhoff, 3.618
Rollins College, Glenn Wilkes, 3.611
Minnesota State University, Emilee Thiesse, 3.603
Truman State University, Theo Dean, 3.597
Metropolitan State University of Denver, Tanya Haave, 3.595
Seattle Pacific University, Mike Simonson, 3.590

Continued on NEXT PAGE

AWARDS

NCAA DIVISION II (cont'd)

ACADEMIC TOP 25 SPECIAL MENTION

Continued from PREVIOUS PAGE

Michigan Tech University, Samantha Clayton, 3.573
University of Montevallo, Olivia Chapman, 3.573
Union University, Mark Campbell, 3.569
Northwest Nazarene University, Steve Steele, 3.561
Franklin Pierce University, Mark Swasey, 3.554
University of Findlay, Michele Durand, 3.554
Harding University, Tim Kirby, 3.554
University of Wisconsin-Parkside, Jen Conely, 3.544
D'Youville University, Alison Bouman, 3.538
Carson-Newman University, Michael Mincey, 3.538
Frostburg State University, Jenna Eckleberry, 3.534
Wayne State University (MI), Carrie Lohr, 3.530
Pittsburg State University, Amanda Davied, 3.518
Azusa Pacific University, T.J. Hardeman, 3.516
University of Virginia's College at Wise, Jamie Cluesman, 3.514
Shorter University, LaSheena Brooks, 3.514
University of Alaska Fairbanks, Amy Donovan, 3.514
Emporia State University, Brian Ostermann, 3.509
Florida Institute of Technology, John Reynolds, 3.490
Hillsdale College, Brianna Brennan, 3.457

Gannon University, Cleve Wright, 3.452
Davenport University, Shonda Sanders, 3.446
Quincy University, Courtney Boyd, 3.438
Mercyhurst University, Brooklyn Kohlheim, 3.418
Assumption University, Kerry Phayre, 3.413
Kentucky State University, Amani Williams, 3.408
University of Hawai'i at Hilo, David Kaneshiro, 3.405
Tuskegee University, Chiantie Wester, 3.402
Daemen University, Jenepher Banker, 3.399
Virginia Union University, Tierra Terry, 3.378
California State University, Monterey Bay, Sarah Hopkins-Chery, 3.369
California State University, East Bay, Jenny Thigpin, 3.353
South Dakota School of Mines & Technology, Jeri Jacobson, 3.352
Dominican University of California, Tim LaKose, 3.346
Coker University, Melissa DeVore, 3.337
Bentley University, C White, 3.329
University of North Carolina at Pembroke, John Haskins, 3.312
Lincoln University, Janice Washington, 3.302
Tusculum University, Roger Hodge, 3.266
Newman University, Amy Briggs, 3.247
University of West Florida, Stephanie Yelton, 3.123
Academy of Art University, Jesse Clark, 3.109
Converse University, Samantha Davidson, 3.070
California State University, San Bernardino, Casandra Renno, 3.055



AWARDS

NCAA DIVISION III

COACH OF THE YEAR



JULI FULKS

Transylvania University

ASSISTANT COACH OF THE YEAR presented by Aflac



HANNAH VAREL

Transylvania University

PLAYER OF THE YEAR



NATALIE BRUNS

New York University

COACH OF THE YEAR FINALISTS

Bob Amsberry, Wartburg College
Meg Barber, New York University
William Broderick, Christopher Newport University
Jenna Cosgrove, Rhode Island College
Matthew Donohue, Catholic University
Juli Fulks, Transylvania University

Kendra Hassell, Hardin-Simmons
Lynn Hersey, Smith College
Maureen Hirt, Denison University
Laurie Kelly, Gustavus Adolphus College
Meredith Mesaris, Vassar College
Megan Phelps, Bowdoin College

AWARDS

NCAA DIVISION III (cont'd)

COACHES' ALL-AMERICA

Natalie Bruns, New York University
Chandler Eddleton, Marymount University
Aleah Grundahl, University of Wisconsin-Whitewater
Sydney Jones, Bowdoin College
Paris Kiser, Hardin-Simmons University
Elyce Knudsen, Millikin University
Morgan Morrison, New York University
Jessie Ruffner, Smith College
Mary Schleusner, Washington & Lee University
Dasia Thornton, Transylvania University

HONORABLE MENTION

Christina Antonakakis, Massachusetts Institute of Technology
Alayna Arnoie, Gettysburg College
Megan Bealer, DeSales University
Julia Blanck, Skidmore College
Izabelle Booth, Rhode Island College
Claire Brock, Emory University
Jessica Brooks, Washington University in St. Louis
Chiara Brown, University of La Verne
Kayla Camacho, Houghton College
Reilly Campbell, Trinity College (CT)
Kacie Carollo, University of Wisconsin-Whitewater
Jordan Carpenter, University of Mary Washington
Angela Czeremcha, Springfield College
Elsa Daulerio, Bates College
Meghan Dryburgh, Washington & Jefferson College
Brianna Fitzgerald, SUNY New Paltz
Haley Franklin, Millsaps College
Jada Garner, Hope College
Abby Gress, University of Rochester
Sophia Guerrier, Rhode Island College
Reese Harden, Messiah University
Sydney Hauger, Gustavus Adolphus College
Lauren Huber, Illinois Wesleyan University
Kaci Kranson, University of Scranton
Hanna Malik, Washington & Lee University
Summer McNulty, Elizabethtown College
Jaedon Murphy, Wartburg College
Alexa Mustafaj, Middlebury College
Belle Pellecchia, New York University
Olivia Rangel, Carroll University
Mikaela Reese, DeSales University
Arieona Rosborough, University of Mary Hardin-Baylor
Maggie Russell, Tufts University
Kasey Schipfer, Ohio Wesleyan University
Brynn Serbin, Ohio Northern University
Toni Thompson, Occidental College
Sidney Tomasso, St John Fisher University
Zoë Tomlinson, Colorado College
Kayce Vaile, University of Wisconsin-Oshkosh
Sidney Wagner, Trine University

ACADEMIC TOP 25 TEAM HONOR ROLL

Rank, Institution, Head Coach, Team GPA

1. Williams College, Patricia Manning, 3.856
2. Martin Luther College, Dan Gawrisch, 3.847
3. Wartburg College, Bob Amsberry, 3.846
4. Hardin-Simmons University, Kendra Whitehead, 3.824
5. Shenandoah University, Melissa Smeltzer-Kraft, 3.801
6. Sarah Lawrence College (NY), Bradley Alexander, 3.793
7. University of Wisconsin-Stevens Point, Matt Hockett, 3.783
8. Middlebury College, KJ Krasco, 3.765
9. Skidmore College, Jessica Turner, 3.754
10. Colorado College, Katherine Menendez, 3.742
11. Washington University in St. Louis, Randi Henderson, 3.730
12. Lawrence University (WI), Riley Woldt, 3.725
13. St Catherine University, Donald Mulhern, 3.721
14. Manhattanville University, Kate Vlahakis, 3.717
15. Springfield College, Naomi Graves, 3.715
16. Widener University, Alisa Kintner, 3.708
17. Wesleyan University, Kate Mullen, 3.706
- T18. Bowdoin College, Megan Phelps, 3.705
- T18. Concordia College (MN), Kim Wagers, 3.705
20. Westminster College (MO), Talisha Washington, 3.701
21. New York University, Meg Barber, 3.695
- T22. Emory University, Misha Jackson, 3.693
- T22. Case Western Reserve University, Jennifer Reimer, 3.693
- T22. Wheaton College (IL), Kent Madsen, 3.693
25. Gustavus Adolphus College, Laurie Kelly, 3.686

SPECIAL MENTION

Massachusetts Institute of Technology, Lucia Robinson-Griggs, 3.685
University of Wisconsin-Stout, Hannah Iverson, 3.685
Swarthmore College, Dawn Grant, 3.677
Carnegie Mellon University, Kathy McConnell-Miller, 3.677
Trine University, Andrew Rang, 3.677
Misericordia University, Jessica Rini, 3.671
Calvin University, Mark Christner, 3.669
Baldwin Wallace University, Cheri Harrer, 3.667
State University of New York at Geneseo, Alyssa Polosky, 3.653
DePauw University, Kristin Huffman, 3.652

Continued on NEXT PAGE

AWARDS

NCAA DIVISION III (cont'd)

ACADEMIC TOP 25 SPECIAL MENTION

Continued from PREVIOUS PAGE

College of St. Scholastica, Jason Schmitz, 3.650
Alfred University, Mike Moskowitz, 3.649
Denison University, Maureen Hirt, 3.647
University of Wisconsin-Oshkosh, Brad Fischer, 3.645
University of Chicago, Maria Williamson, 3.643
College of Saint Benedict, Mike Durbin, 3.640
Adrian College, Kathy Morris, 3.639
Arcadia University, Jackie Hartzell, 3.638
University of Redlands, Rich Murphy, 3.636
Smith College, Lynn Hersey, 3.635
Johns Hopkins University, Rodney Rogan, 3.635
Gallaudet University, Stephanie Stevens, 3.633
University of Wisconsin-River Falls, Shelby Lyman, 3.630
Pennsylvania College of Technology, Britni Mohney, 3.624
Fredonia State University, Sarah Cartmill, 3.620
Spalding University, Ben Arsenault, 3.619
Bryn Mawr College, Carla Coleman, 3.618
Haverford College, Grace Elliott, 3.618
St. Norbert College, Amanda Perry, 3.615
Simpson College, Brian Niemuth, 3.611
Suffolk University, Ed Leyden, 3.608
Worcester Polytechnic Institute, Cherise Galasso, 3.607
Drew University, John Olenowski, 3.605
Luther College, Amanda Bailey, 3.598
Saint Vincent College, James Petruska, 3.597
John Carroll University, Elizabeth Andrews, 3.592
Kean University, Mandy King, 3.591
University of Scranton, Ben O'Brien, 3.590
Illinois Wesleyan University, Mia Smith, 3.584
Catholic University, Matt Donohue, 3.581
Rhodes College, Judi Vigneulle, 3.576
Immaculata University, Brittany Whalen, 3.574
Hope College, Brian Morehouse, 3.570
William Paterson University, Erin Monahan, 3.562
St. Joseph's College (ME), Mike McDevitt, 3.560
Wellesley College, Jennifer Kroll, 3.560
Marietta College, Kole Vivian, 3.558
Stevens Institute of Technology, Megan Haughey, 3.552
University of Mary Washington, Deena Applebury, 3.548
Muskingum University, Kelly Broderick, 3.548
Ohio Wesleyan University, Stacey Lobdell, 3.547
Christopher Newport University, Bill Broderick, 3.546
Millsaps College, Justin LeBlanc, 3.543

Franklin & Marshall College, Brianna Spector, 3.539
Houghton University, Phil Pellegrino, 3.538
Elizabethtown College, Veronica Nolt, 3.534
Occidental College, Anahit Aladzhanyan, 3.528
King's College (PA), Caitlin Hadzimichalis, 3.524
William Smith College, Lindsay Sharman, 3.522
Randolph-Macon College, Lindsey Burke, 3.516
Saint Mary's College (IN), Melissa Makielski, 3.515
Kenyon College, Mary Corbett, 3.513
Monmouth College (IL), Michelle DeCoud, 3.507
University of Mount Union, Suzy Venet Pietz, 3.502
Utica University, Michele Davis, 3.499
University of Wisconsin-Eau Claire, Tonja Englund, 3.492
Whitman College, Michelle Ferenz, 3.489
University of Dubuque, Justin Smith, 3.486
Ohio Northern University, Mark Huelsman, 3.484
York College (PA), Betsy Witman, 3.480
Susquehanna University, Gabby Holko, 3.479
University of Lynchburg, Allison Nichols, 3.477
Rhode Island College, Jenna Cosgrove, 3.476
Penn State Behrend, Christine VanHook, 3.474
Fitchburg State University, Laura Pierce, 3.472
Rochester Institute of Technology, Amy Reed, 3.472
Marywood University, Jennifer Carleton, 3.471
Carthage College, Megan Jones, 3.467
Gettysburg College, Nathan Davis, 3.463
Husson University, Kissy Walker, 3.459
Central College (IA), Justin Weiland, 3.456
Capital University, Camille McPherson, 3.451
DeSales University, Fred Richter, 3.442
Muhlenberg College, Ron Rohn, 3.440
Washington & Jefferson College, Jina DeRubbo, 3.439
McDaniel College, Christin Gowan, 3.437
Anderson University (IN), Jon Gin, 3.434
Hollins University, Emilee Dunton, 3.431
Manchester University, Josh Dzurick, 3.425
Marymount University, Margaret White, 3.421
Coe College, Kayla Waskow, 3.419
Southern Virginia University, Lynette Schroeder, 3.417
University of Rochester, James Scheible, 3.416
Dickinson College, Aby Diop, 3.410
Salisbury University, Aprile Preller, 3.409
State University of New York at Brockport, Corinne Jones, 3.409
Augustana College (IL), Mark Beinborn, 3.394
Marian University of Wisconsin, Josh Ward, 3.391
Wilkes University, Al Berger, 3.388

Continued on NEXT PAGE

AWARDS

NCAA DIVISION III (cont'd)

NCAA DIVISION III ALL-STARS



Christina Antonakakis, Massachusetts Institute of Technology
Korin Baker, Whitman College
Izabelle Booth, Rhode Island College
Claire Brock, Emory University
Jessica Brooks, Washington University in St Louis
Chiara Brown, University of La Verne
Jordan Carpenter, University of Mary Washington
Sophie Darden, Millikin University
Bailey Donovan, Husson University
Chandler Eddleton, Marymount University
Lyric Grumblatt, Rivier University
Aleah Grundahl, University of Wisconsin-Whitewater
Paris Kiser, Hardin-Simmons University
Elyce Knudsen, Millikin University
Hanna Malik, Washington & Lee University
Kennedy Osterman, University of Wisconsin-Oshkosh
Brynn Serbin, Ohio Northern University
Kasey Schipfer, Ohio Wesleyan University
Toni Thompson, Occidental College
Jenny Walton, State University of New York at New Paltz

ACADEMIC TOP 25 SPECIAL MENTION

Continued from PREVIOUS PAGE

Penn State Harrisburg, Ross Patrick, 3.387
Elmira College, Thaddeus Phillips, 3.374
Kalamazoo College, Ryan Clark, 3.363
Bard College, Casi Donelan, 3.362
Babson College, Kate Barnosky, 3.361
Chapman University, Carol Jue, 3.358
Regis College, Samantha Crough, 3.348
Bethany Lutheran College, Emma Purfeerst, 3.327

Mount Mary University, Joshua Steffen, 3.319
St. Mary's University (MD), Brittney Kemp, 3.300
Moravian University, Mary Beth Spirk, 3.295
Willamette University, Peg Swadener, 3.286
LeTourneau University, Scot MacAllister, 3.278
Heidelberg University, Rachel Mease, 3.268
Buena Vista University, David Wells, 3.267
Gordon College, Carter Shaw, 3.242
Colby-Sawyer College, Tim Viola, 3.225
Mount Saint Mary College (NY), Marion Dietz, 3.222
Principia College, Ramiro Dominguez, 3.200
Keystone College, Jason Rhine, 3.123
Mount Aloysius College, Brian Giesler, 3.076

NAIA AWARDS

COACH OF THE YEAR



GINGER COLVIN
Campbellsville University

ASSISTANT COACH OF THE YEAR presented by Aflac



SIERRA VAGLICA
Vanguard University

PLAYER OF THE YEAR



ELLA COLLIER
Marian University

COACH OF THE YEAR FINALISTS

Jessie Biggs, Indiana Institute of Technology
Ginger Colvin, Campbellsville University
Shawn Reed, Tabor College

Rachelle Sayers, Carroll College
Jeff Soderquist, John Brown University
Candace Walker, Saint Thomas University

AWARDS

NAIA (cont'd)

COACHES' ALL-AMERICA

Melissa Akullu, Vanguard University
Grace Beyer, University of Health Sciences and Pharmacy
Sandra Cannady, Loyola University
Ella Collier, Marian University
Erika Foy, Indiana Institute of Technology
Lauren Lee, Campbellsville University
Nicole McDermott, Clarke University
Jamie Pickens, Carroll College
Allie Stone, University of Pikeville
Kaitlynn Wilks, Campbellsville University

HONORABLE MENTION

Madaline Boyle, Campbellsville University
Kiara Brown, Menlo College
Jessica Carrothers, Indiana University Northwest
Kaylee Clark, Williams Baptist University
Korynn Clason, Sterling College
Brooke Dial, Waldorf University
Lilli Frasure, Indiana Wesleyan University
Jaycie Jenkins, Milligan University
Ella Larsen, Grand View University
Ashlee Maldonado, University of Providence
Madie McCoy, Tabor College
Teionni McDaniel, Georgetown College
Kassie Monday, University of the Cumberlands
Alyvia Owens, Tabor College
Jordan Reid, Indiana Wesleyan University
LaMyah Ricks, Kansas Wesleyan University
Lauren Rowley, William Carey University
Tarrah Stephens, John Brown University
Jordan Sweeney, University of Montana-Western
Taylor Thomas, Loyola University

ACADEMIC TOP 25 TEAM HONOR ROLL

Rank, Institution, Head Coach, Team GPA

1. Sterling College, K.C. Bassett, 3.831
2. Tabor College, Shawn Reed, 3.826
3. University of Pikeville, Clifton Williams, 3.824
4. Keiser University, Pam Oswald, 3.809
- T5. John Brown University, Jeff Soderquist, 3.762
- T5. University of the Cumberlands, Rick Reeves, 3.762
7. Grand View University, Jasmine Stohr, 3.756
8. Carroll College, Rachelle Sayers, 3.702
9. Southern Oregon University, Carlotta Kloppenburg-Pruitt, 3.691
10. Faulkner University, Reed Sutton, 3.677
11. Culver-Stockton College, Janette Burgin, 3.665
12. Cornerstone University, Jessica Yonkers, 3.655
13. University of Jamestown, Thad Sankey, 3.596
14. Kansas Wesleyan University, Ryan Showman, 3.592
15. Mid-America Christian University, Hannah Moeller, 3.591
16. Holy Cross College (IN), Tom Robbins, 3.578
17. Indiana Institute of Technology, Jessica Biggs, 3.521
18. University of Providence (MT), Bill Himmelberg, 3.515
19. Embry-Riddle Aeronautical University (AZ), Michael Trujillo, 3.496
20. Grace College, Dan Davis, 3.479
21. University of Rio Grande (OH), David Smalley, 3.448
22. Lourdes University, Tandy Bradford, 3.439
23. Loyola University (New Orleans), Kellie Kennedy, 3.433
24. Ottawa University, Hunter Bondurant, 3.388
25. Columbia College (MO), James Arnold, 3.387

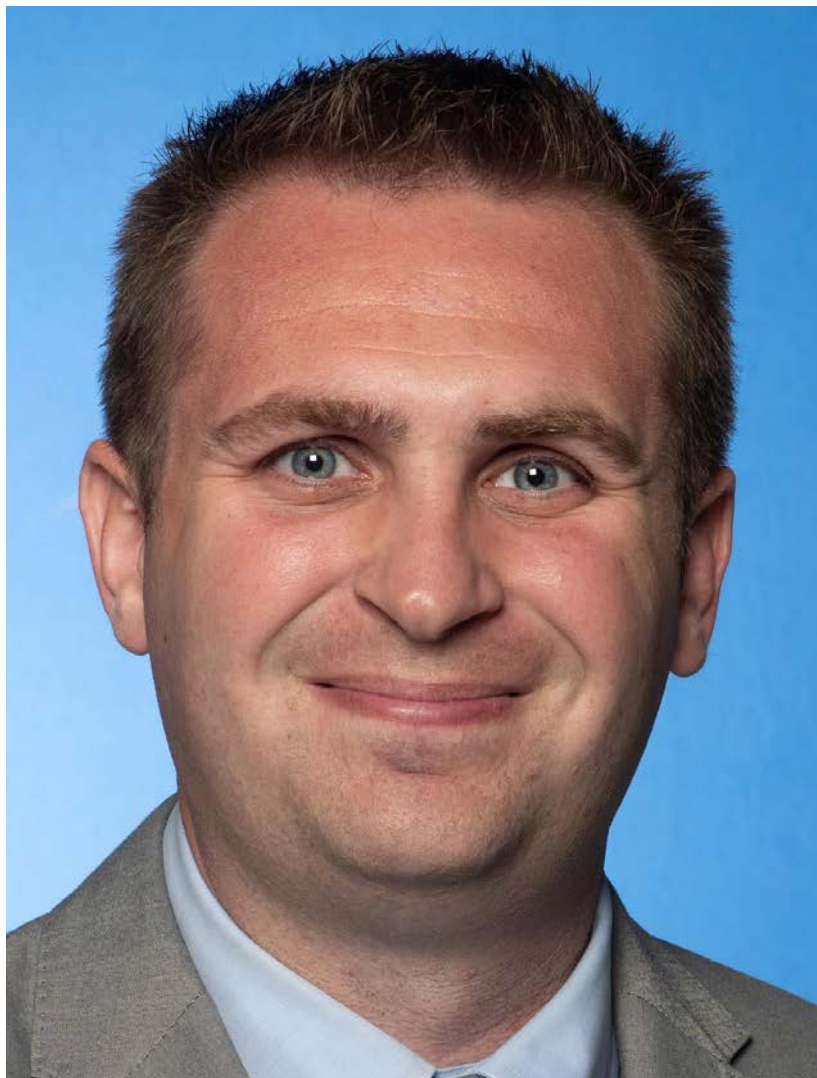
SPECIAL MENTION

University of the Southwest (NM), Michael Dominguez, 3.362
Siena Heights University, Sue Syljebeck, 3.230

AWARDS

TWO-YEAR COLLEGE

COACH OF THE YEAR



LUKE SCHNEIDECKER

Wabash Valley College (IL)

ASSISTANT COACH OF THE YEAR

presented by Aflac



KATIE JONES

Johnson County Community College (KS)

PLAYER OF THE YEAR



WAIATA JENNINGS

Collin College (TX)

COACHES' ALL-AMERICA

Princess Anderson, Pratt Community College (KS)
Pania Davis, New Mexico Junior College
Amelisa Hassett, Eastern Florida State College
Olivia Hayenga, Minnesota West Community & Technical College
Waiata Jennings, Collin College (TX)

Ella Lavigne, Central Maine Community College
Daisia Mitchell, Mount San Antonio College (CA)
Fortuna Ngawo, Cochise Community College (AZ)
Beautiful Waheed, Wabash Valley College (IL)
Amyria Walker, Angelina College (TX)

AWARDS

TWO-YEAR COLLEGE (cont'd)

HONORABLE MENTION

COACHES' ALL-AMERICA

Nakiyah Allen, Kilgore College (TX)
Cacia Antonio, New Mexico Junior College
Kierstin Constantino, Las Positas College (CA)
Isobel Crosswhite, Marin Community College (CA)
Steph Da Silva, Chandler-Gilbert Community College (AZ)
Saige Grampsas, Johnson County Community College (KS)
D'Mya Griffin, East Georgia State College
BryKayla Hampton, Kilgore College (TX)
Corrie Harrison, Folsom Lake College (CA)
Nyla Inmon, Kilgore College (TX)
Marie Kenembeni, Angelina College (TX)
Jaida McDonald, Pensacola State College (FL)
Maya Mitchell, Rock Valley College (IL)
Mia Moore, Rock Valley College (IL)
Lydie Mwamba, Trinity Valley Community College (TX)
Lucia Noin, Raritan Valley Community College (NJ)
Shameir Quimby, Miami-Dade College (FL)
Shamya Reid, Wabash Valley College (IL)
Dailani Richardson, Mount San Antonio College (CA)
Aaliyah Smith, Wabash Valley College (IL)
Tanita Swift, Pensacola State College (FL)
Mya Way, Chandler-Gilbert Community College (AZ)

ACADEMIC TOP 25 TEAM HONOR ROLL

Rank, Institution, Head Coach, Team GPA

1. Folsom Lake College (CA), Ali Mollet, 3.564
- T2. Lamar Community College (CO), Delino Lewis, 3.506
- T2. Solano College (CA), Matt Borchert, 3.506
4. Southwestern Oregon Community College, Heather Weber, 3.490
5. Rio Hondo College (CA), Rene Herrera, 3.489
6. Taft College (CA), Romeo Lagmay, Jr., 3.480
7. Pima Community College (AZ), Todd Holthaus, 3.478
8. Kansas City Kansas Community College, Martina Mihailovic, 3.412
9. Minnesota West Community and Technical College, Rosalie Hayenga, 3.243
10. Cypress College (CA), Brittany Imaku, 3.239
11. Northeast Mississippi Community College, Chelsey Rhodes, 3.224
12. Pratt Community (KS), Eric Rodewald, 3.137

There were only 12 institutions eligible for ranking in the two-year college division.



AWARDS

HIGH SCHOOL

COACH OF THE YEAR



KEVIN KIERNAN

Mater Dei High School (Santa Ana, CA)

PLAYER OF THE YEAR



SARAH STRONG

Grace Christian High School (Sanford, NC)

COACHES' ALL-AMERICA

Mikayla Blakes, Rutgers Prep High School (Somerset, NJ)
Jaloni Cambridge, Montverde Academy (FL)
Justice Carlton, Seven Lakes High School (Katy, TX)
Joyce Edwards, Camden High School (SC)
Kateryna Koval, Long Island Lutheran HS (Brookville, NY)
Jordan Lee, Saint Mary's High School (Stockton, CA)

Kennedy Smith, Etiwanda High School (Rancho Cucamonga, CA)
Sarah Strong, Grace Christian High School (Sanford, NC)
Syla Swords, Long Island Lutheran HS (Brookville, NY)
Allie Ziebell, Neenah High School (WI)

AWARDS

HIGH SCHOOL (cont'd)

HONORABLE MENTION

COACHES' ALL-AMERICA

Imari Berry, Clarksville High School (TN)
Alexandra Blue, Lake Highland Preparatory School (Orlando, FL)
Morgan Cheli, Archbishop Mitty High School (San Jose, CA)
Kendall Dudley, Sidwell Friends School (Washington, DC)
Katie Fiso, Garfield High School (Seattle, WA)
Leah Harmon, IMG Academy (Bradenton, FL)
Kayleigh Heckel, Long Island Lutheran High School (Brookville, NY)
Avery Howell, Boise High School (ID)
Zamareya Jones, North Pitt High School (NC)
Madisen McDaniel, Bishop McNamara High School (Forestville, MD)
Alivia McGill, Hopkins High School (Minnetonka, MN)
Me'Arah O'Neal, Episcopal High School (Houston, TX)
Olivia Olson, Benilde-St. Margaret's School (St. Louis Park, MN)
Britt Prince, Elkhorn North High School (Omaha, NE)
Mackently Randolph, Sierra Canyon School (Chatsworth, CA)
Arianna Roberson, Clark High School (San Antonio, TX)
Zania Socka-Nguemen, Sidwell Friends School (Washington, DC)
Blanca Thomas, Charlotte Catholic High School (NC)
Kennedy Ume, McDonogh School (Owings Mills, MD)
Berry Wallace, Pickerington High School Central (Pickerington, OH)

MAXPREPS/WBCA

PLAYER OF THE WEEK

Week ending Dec. 3, 2023

Region 1 — Ana Milanovic, Ethel Walker School (Simsbury, CT)
Region 2 — Kayley Trump, Mercer Christian Academy (Princeton, WV)
Region 3 — Emerson Thompson, Falls Lake Academy (Creedmoor, NC)
Region 4 — Denver Anderson, Mount Zion High School (IL)
Region 5 — Korrie Holcer, Meadville R-IV School (MO)
Region 6 — Aaliyah Chavez, Monterey High School (Lubbock, TX)
Region 7 — Bronte Gee, Mohave Accelerated Learning Center (Bullhead City, AZ)
Region 8 — Alexis Tinnin, Frontier High School (Bakersfield, CA)
Region 9 — Katelyn St.Clair, Sand Rock High School (Leesburg, AL)

Week ending Dec. 10, 2023

Region 1 — Alicia Browder, Neighborhood House Charter School (Dorchester, MA)
Region 2 — Jessica Canty, Parkway Center City High School (Philadelphia, PA)
Region 3 — Sarah Strong, Grace Christian School (Sanford, NC)
Region 4 — Maddyn Greenway, Providence Academy (Plymouth, MN)
Region 5 — Adyson Mlnarik, Summerland Public School (Clearwater, NE)
Region 6 — Kera Martinez, Southwest Legacy High School (Von Ormy, TX)
Region 7 — America Cazares, Pueblo High School (Tucson, AZ)
Region 8 — Sa'rye Starks, Ygnacio Valley High School (Concord, CA)
Region 9 — Lorianys Castanon Cruz, Mulberry High School (FL)

Week ending Dec. 17, 2023

Region 1 — Tiara Tyson, Manchester High School (CT)
Region 2 — Aisha Muibi, Academy at Palumbo (Philadelphia, PA)
Region 3 — Jayda Angel, Cape Fear High School (Fayetteville, NC)
Region 4 — Leila Carter, Columbus International High School (Columbus, OH)

Continued on NEXT PAGE

AWARDS

HIGH SCHOOL (cont'd)

MAXPREPS/WBCA

PLAYER OF THE WEEK

Continued from PREVIOUS PAGE

Region 5 — Ashlan Carlow-Blount, Red Cloud Indian School (Pine Ridge, SD)

Region 6 — Oaklee Lofton, Legacy Academy (Lockesburg, AR)

Region 7 — Elyn Bowers, Pinedale High School (WY)

Region 8 — Aryanna Watson, Service High School (Anchorage, AK)

Region 9 — Mary Kate Kent, St. Johns Country Day (Orange Park, FL)

Week ending Jan. 7, 2024

Region 1 — Bailey Breen, Oceanside High School (Rockland, ME)

Region 2 — Devyn Quigley, Manchester Township High School (NJ)

Region 3 — Emily Evans, Westover Christian Academy (Danville, VA)

Region 4 — Kenzie Fulks, Bethesda Christian School (Brownsburg, IN)

Region 5 — Hannah Gibbons, Southern Missouri RUSH High School (Columbia, MO)

Region 6 — Nyshea Hoskin, Nanih Waiya Attendance Center (Louisville, MS)

Region 7 — Addie Prisciandaro, Prescott High School (AZ)

Region 8 — Sierra Maxwell, Heritage High School (Menifee, CA)

Region 9 — AK Drakeford, Mercer County High School (Harrodsburg, KY)

Week ending Jan. 14, 2024

Region 1 — Bela Cucuta, Newington High School (CT)

Region 2 — Arianna Mercado, East New York Family Academy (Brooklyn, NY)

Region 3 — Ana Chacha, Mountain Mission School (Grundy, VA)

Region 4 — Willow Thiel, Perham High School (MN)

Region 5 — Halle Jones, Holcomb High School (KS)

Region 6 — Eryn Brown, Istrouma High School (Baton Rouge, LA)

Region 7 — Cassandra Coolidge, Sahuaro High School (Tucson, AZ)

Region 8 — Carrington Davis, Rialto High School (CA)

Region 9 — Lily Brothers, Cornerstone Christian Academy (Shelbyville, KY)

Week ending Jan. 21, 2024

Region 1 — Bailey Breen, Oceanside High School (Rockland, ME)

Region 2 — Iyanna Wade, Clairton High School (PA)

Region 3 — Cherish Daily, Armstrong High School (Richmond, VA)

Region 4 — Shelby Bowman, Biggsville West Central High School (Biggsville, IL)

Region 5 — Madison Carter, Wright City High School (OK)

Region 6 — Rian Forestier, Brandeis High School (San Antonio, TX)

Region 7 — Clara-Mae Hrouch, Catalina Foothills High School (Tucson, AZ)

Region 8 — Lauren Harris, Faith Christian High School (Yuba City, CA)

Region 9 — Serenity Hardy, Winter Haven High School (FL)

Week ending Feb. 4, 2024

Region 1 — Lusine Hagopian, North Providence High School (RI)

Region 2 — Jayla Bell, Lyons High School (NY)

Region 3 — Morgan Wadsworth, Ahoskie Christian School (Ahoskie, NC)

Region 4 — Averie Zinn, Genesee High School (MI)

Region 5 — Aaliyah Shawnee, Glenpool High School (OK)

Region 6 — Saniya Burks, Rice High School (TX)

Region 7 — Lamaiya Woodberry, McClintock High School (Tempe, AZ)

Region 8 — Alex Facelo, Pinewood High School (Los Altos Hills, CA)

Region 9 — Shakiria Foster, Lamar County High School (Barnesville, GA)

Week ending Feb. 11, 2024

Region 1 — Karin Richardson, Neighborhood House Charter School (Dorchester, MA)

Region 2 — Jeeanna Pierantoni, Cardozo High School (Bayside, NY)

Region 3 — Amyah Robinson, Culpeper County High School (Culpeper, VA)

Region 4 — Tiara Williams, Morgan Park Academy (Chicago, IL)

Region 5 — Myleigh Weers, Diller-Odell High School (Odell, NE)

Region 6 — Eryn Brown, Istrouma High School (Baton Rouge, LA)

Region 7 — Olivia Hamlin, Snow Canyon High School (St. George, UT)

Region 8 — Nia Rogers, Redwood Christian High School (San Lorenzo, CA)

Continued on NEXT PAGE

AWARDS

HIGH SCHOOL (cont'd)

MAXPREPS/WBCA

PLAYER OF THE WEEK

Continued from PREVIOUS PAGE

Region 9 — Hannah Smith, Montgomery Catholic Preparatory School (Montgomery, AL)

Week ending Feb. 18, 2024

Region 1 — Bailey Winner, East Windsor High School (CT)

Region 2 — Devyn Quigley, Manchester Township High School (Lakehurst, NJ)

Region 3 — Jayda Angel, Cape Fear High School (Fayetteville, NC)

Region 4 — Averie Zinn, Genesee High School (MI)

Region 5 — Madalyn Dolliver, Pender High School (NE)

Region 6 — Harper Dunn, Corona/Vaughn High School (Corona, NM)

Region 7 — Elyn Bowers, Pinedale High School (WY)

Region 8 — Kaleena Smith, Ontario Christian School (Ontario, CA)

Region 9 — Gabbie Grooms, Trinity Christian School (Sharpsburg, GA)

Week ending Feb. 25, 2024

Region 1 — Hannah Gilbert, Franklin County Technical School (Turners Falls, MA)

Region 2 — Jade Ling Eng-Stewart, Fieldston High School (Bronx, NY)

Region 3 — Lauren Jacobs, Heathwood Hall Episcopal High School (Columbia, SC)

Region 4 — Addison Rhodes, Crestview High School (Columbiana, OH)

Region 5 — Timber Carter, Wewoka High School (Seminole, OK)

Region 6 — Madison Hurta, San Marcos HomeSchool (San Marcos, TX)

Region 7 — Navae Guidry, Mesquite High School (Gilbert, AZ)

Region 8 — Aaliah Spaight, Bishop Gorman High School (Las Vegas, NV)

Region 9 — Nya Smith, Milton High School (GA)

Week ending March 3, 2024

Region 1 — Reign Whiteing, Lincoln School (Providence, RI)

Region 2 — Julie Spinelli, St. Joseph High School (Natrona Heights, PA)

Region 3 — Jayda Angel, Cape Fear High School (Fayetteville, NC)

Region 4 — Ava Patti, Rocky River High School (OH)

Region 5 — Caelyn Ferguson, Heritage Christian Academy (Olathe, KS)

Region 6 — Alexis Dyer, Oak Hill High School (Hineston, LA)

Region 7 — Olivia Hamlin, Snow Canyon High School (St. George, UT)

Region 8 — Lauren Harris, Faith Christian High School (Yuba City, CA)

Region 9 — Karina Bystry, McMinn Central High School (Englewood, TN)





Women's Basketball Coaches Association

4646 Lawrenceville Highway | Lilburn, Georgia 30047
770-279-8027 | membership@wbca.org | www.WBCA.org