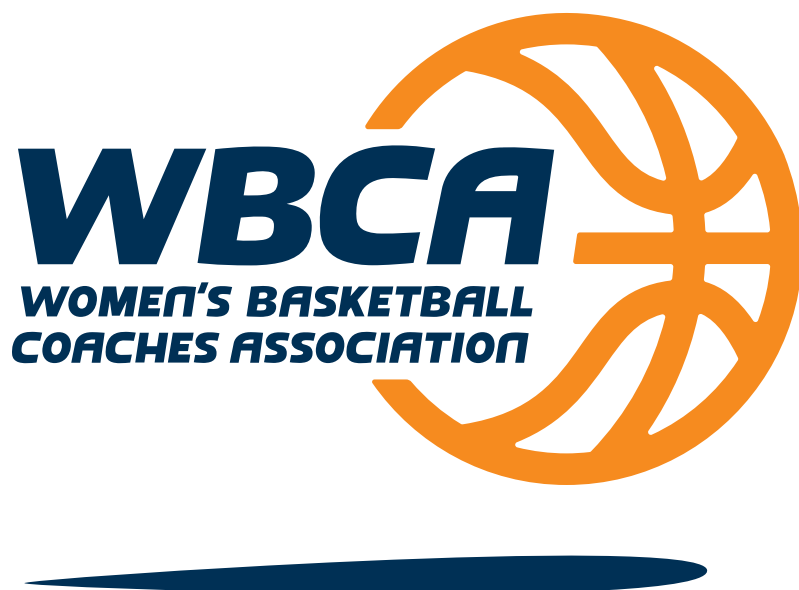


ANNUAL REPORT



2022-23 Association Year

TABLE OF CONTENTS

- Introduction 3
- Organization 4
- Leadership 5
- Structure..... 6
- Membership 7
- Finances..... 8
- Convention 9
- Connections 10
- Engagement 11
- Actions 12
- Recognition..... 15

INTRODUCTION

Dear member,

We are pleased to present you with this annual report for the 2022-23 association year. The report summarizes the WBCA's status and activities from Sept. 1, 2022, through Aug. 31, 2023.

The game has never been stronger. We are in a place of great strength, and we have more talent and media exposure than ever before.

As the game continues to strengthen, so does your WBCA. On Saturday, April 1, 2023, active members attending a special legislative session during the WBCA Convention in Dallas voted unanimously to adopt a comprehensive amendment to Article 4 of the association's bylaws. This change shifts the WBCA Board of Directors from a representative board to a functional working corporate board. It empowers the board to identify, recruit and select members with strengths, experience, service and skills to strategically address the issues of the constantly changing landscape of our industry. Board composition does not change...every membership division, scholastic to NCAA Division I retains its voice and vote.

The trailblazers who came before us fought hard to form the WBCA, grow it, and make it relevant. We must be willing to evolve and change as needed to remain so.

Thank you for being a coach, for being a member, and for your continuing support.

Best wishes!


Courtney Banghart
President
(2023-2025)


Cori Close
Immediate Past President
(2021-2023)


Danielle M. Donehew
Executive Director



Courtney Banghart



Cori Close



Danielle Donehew

ORGANIZATION

Our mission, vision, values and objectives define who we are and aspire to be, why we exist, what we believe, and what we do. Our code of ethics establishes standards of conduct and our expectations of each other and ourselves.

Our Mission

The WBCA leads, serves and unites coaches of women's basketball for the good of our game and those who play it.



Our Vision

Every coach of women's basketball looks to the WBCA for the support they need to succeed professionally, grow the game, and inspire players to realize their full potential.



Our Values

Member coaches are stewards of the game, conducting themselves with professionalism and integrity, and putting foremost the safety, welfare and educational interests of the women and girls they coach. The WBCA membership, board of directors and staff conduct themselves in such a manner that the women and girls who play basketball gain self-respect, self-esteem and self-confidence, as well as educational development. These qualities empower women and girls to succeed in life and to become leaders in their professions, communities and society.



Our Objectives

- We follow both the letter and spirit of the rules and regulations that govern our sport.
- We inform, advise and guide coaches on matters that impact their profession and their sport.
- We offer networking opportunities that allow coaches to connect, encourage and mentor each other.
- We provide educational programming that enables coaches to make themselves better leaders, teachers and role models for the athletes they coach, and improve the quality and popularity of the game.
- We recognize coaches, as well as their athletes and their teams, who excel athletically and academically each year, and honor those who have made lasting contributions to the profession and sport throughout their career.
- We act as the unifying voice of coaches to the organizations that govern the sport at its various levels of competition.



Code of Ethics

Members conduct themselves professionally, according to the rules, and with civility to players, administrators, game officials, fans and each other. All members must adhere to these ethical and behavioral standards.

INTEGRITY

- We follow both the letter and spirit of the rules and regulations that govern our sport.
- We watch for actions that could influence other coaches, staff members, athletes and fans to behave in a way that is contrary to these standards.
- We report conduct or suspected conduct that is not in keeping with these standards as well as the rules and regulations that govern our sport.
- We acknowledge that winning is important, but never at the expense of sportsmanship, safety and integrity.

ATHLETE EXPERIENCE

- We place the physical and mental well-being of the women and girls who play basketball above all else; their health and safety is paramount.
- We maintain strictly professional relationships with the athletes with whom we interact.
- We respect the dignity and individuality of each person with whom we interact and promote a diverse and inclusive culture in which every individual is valued.

EDUCATION AND EMPOWERMENT

- We teach by example and instill in our athletes the fundamental values of honesty, integrity, respect, civility, self-discipline, personal responsibility and fairness.
- We educate women and girls in a manner that prepares them to succeed in life and become leaders in their communities.
- We strive in all we do to expand athlete experiences and support their academic and educational interests.

PROFESSIONALISM

- We perform with excellence and good sportsmanship and require the same of each other and our athletes.
- We commit to growing and enhancing the sport of women's basketball and seek opportunities to grow personally and professionally.
- We respect the game, fellow coaches, administrators, game officials and the women and girls we coach and teach.
- We conduct ourselves according to the WBCA values and standards and are accountable for our decisions and actions.

LEADERSHIP

The association is governed by a board of directors composed of 25 voting officers and directors (the executive director votes only when necessary to break a tie) and a number of nonvoting consultants to the board who represent strategic partners or have expertise of importance to the profession and the sport. The board selects its own members and elects officers from among the sitting directors.

Board of Directors



Courtney Banghart
Head Coach
North Carolina
President¹



Kelly Black-Holmes
Assoc. General Counsel
Warner Bros. Discovery
Public Sector



Mike Brandt
Head Coach
Minot State
NCAA Division II



Cori Close
Head Coach
UCLA
Past President¹



Danielle Donehew
Executive Director
WBCA
Secretary^{1,2}



Julie Eddleman
Chief Commercial Officer
DoubleVerify
Public Sector



Jose Fernandez
Head Coach
South Florida
Vice President¹



Gene Hill
Head Coach
Georgia State
NCAA Division I



Romeo Lagmay
Head Coach
Taft
Two-Year College



Kathy Maguire-Stoudt
Head Coach
Rising Sun, MD
Scholastic



Brian Morehouse
Head Coach
Hope
NCAA Division III¹



Mike Neighbors
Head Coach
Arkansas
NCAA Division I



Chris Nelson
Head Coach
Bethel, TN
NAIA



Danielle O'Banion
Head Coach
Loyola, MD
NCAA Division I



Cheytoria Penny
Director of Finance
Emory
Treasurer¹



Julie Roe Lach
Commissioner
Horizon League
DI Commissioners



Carissa Sain
Head Coach
Illinois Tech
NCAA Division III



Dave Slifer
Head Coach
Central Missouri
NCAA Division II



Charmin Smith
Head Coach
Cal
NCAA Division I



Debbie Spander
Founder/CEO
Insight Sports Advisors
Public Sector



Jenn Strawley
Director of Athletics
Elon
Athletic Administrators



Joni Taylor
Head Coach
Texas A&M
NCAA Division I¹



Jess Turner
Head Coach
Skidmore
NCAA Division III



Steve Yang
Assistant Coach
California Baptist
Assistant Coaches



Stephanie Yelton
Head Coach
West Florida
NCAA Division II¹



Carol Callan
Board Member
FIBA Americas³



Liz Hollingworth
Professor, Iowa
Faculty Athletic
Representatives³



Lynn Holzman
Vice President of
Women's Basketball
NCAA³



Binh Nguyen
Director, Academic &
Membership Affairs
NCAA³

1—Member of Executive Committee; 2—Votes only when needed to break a tie; 3—Nonvoting

STRUCTURE

The board of directors employs an executive director to manage the day-to-day affairs of the association. The executive director also serves as the association’s secretary and is a member of the board and executive committee, voting only when necessary to break a tie. The executive director employs a staff to assist with the management of the association’s programs and initiatives.

WBCA Staff



Danielle Donehew
Executive Director
ddonehew@wbca.org
770-279-8027 ext. 122



Mary Ellen Gillespie
Deputy Director
meg@wbca.org
770-279-8027 ext. 118



Dana Refling
Executive Assistant
drefling@wbca.org
770-279-8027 ext. 122



Latasha Lewis
Manager of Marketing
Communications
llewis@wbca.org
770-279-8027 ext. 105



Daniella Trujillo
Senior Manager of
Events & Awards
dtrujillo@wbca.org
770-279-8027 ext. 110



Jack Watford
Director of
Communications
jwatford@wbca.org
770-279-8027 ext. 112



Shayla Black
Manager of Membership
Associations International
sblack@wbca.org
770-279-8027 Prompt 2

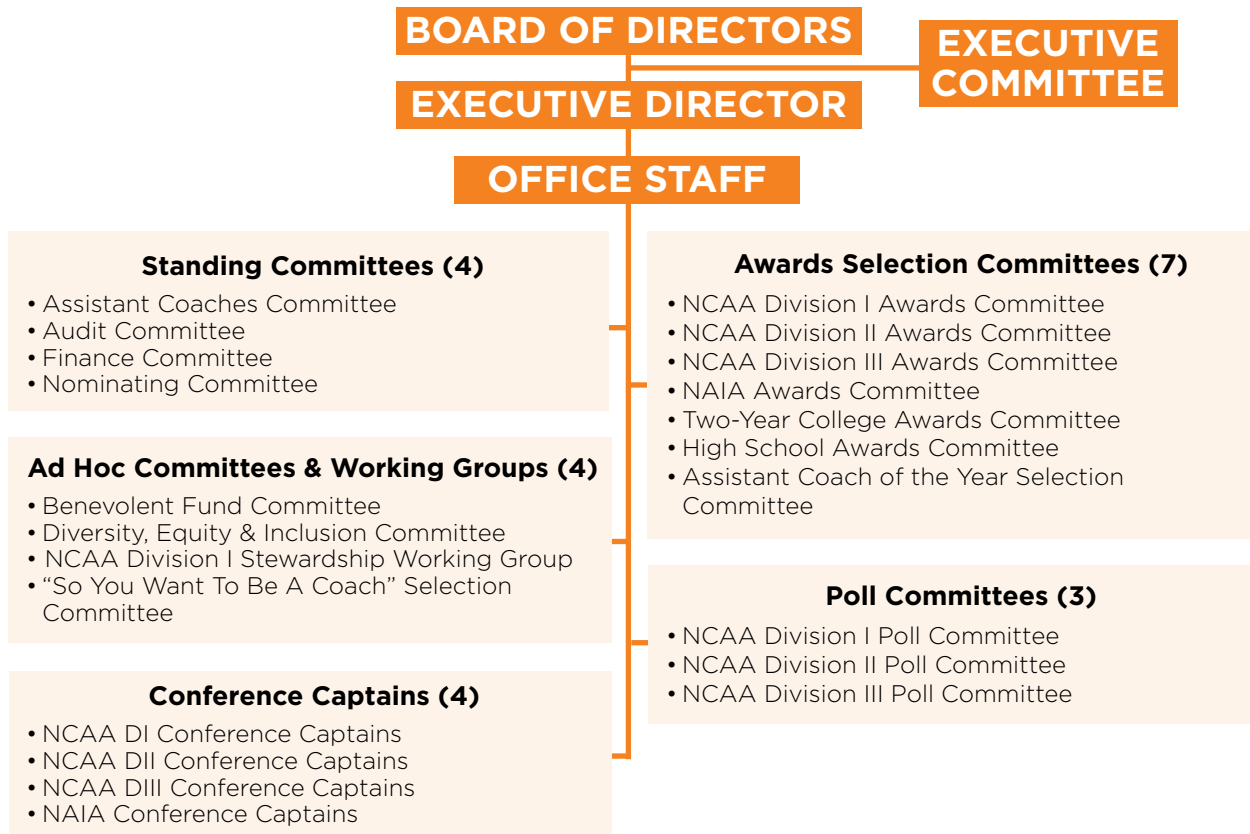


Abby Davis
Events Manager
Associations International
adavis@wbca.org
859-207-3918



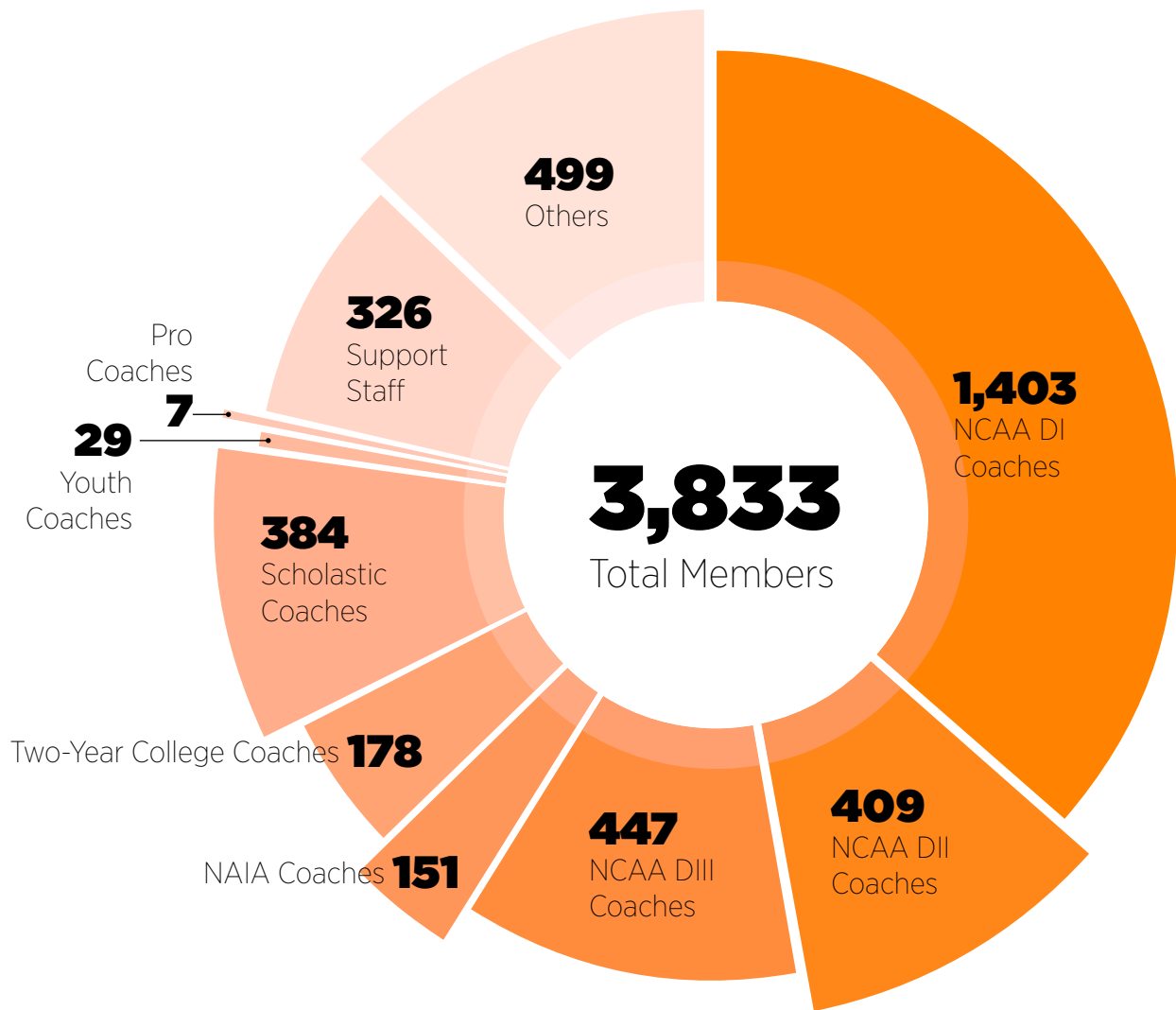
Marcellus Barksdale
Senior Manager
Learfield
marcellus.barksdale@
learfield.com

Organizational Structure



MEMBERSHIP

WBCA membership continued its post-pandemic recovery during the 2022-23 association year, increasing to 3,833 members — an 8-percent increase over the previous year — but still 780 members shy of the pre-pandemic high of 4,613 in 2018-19.



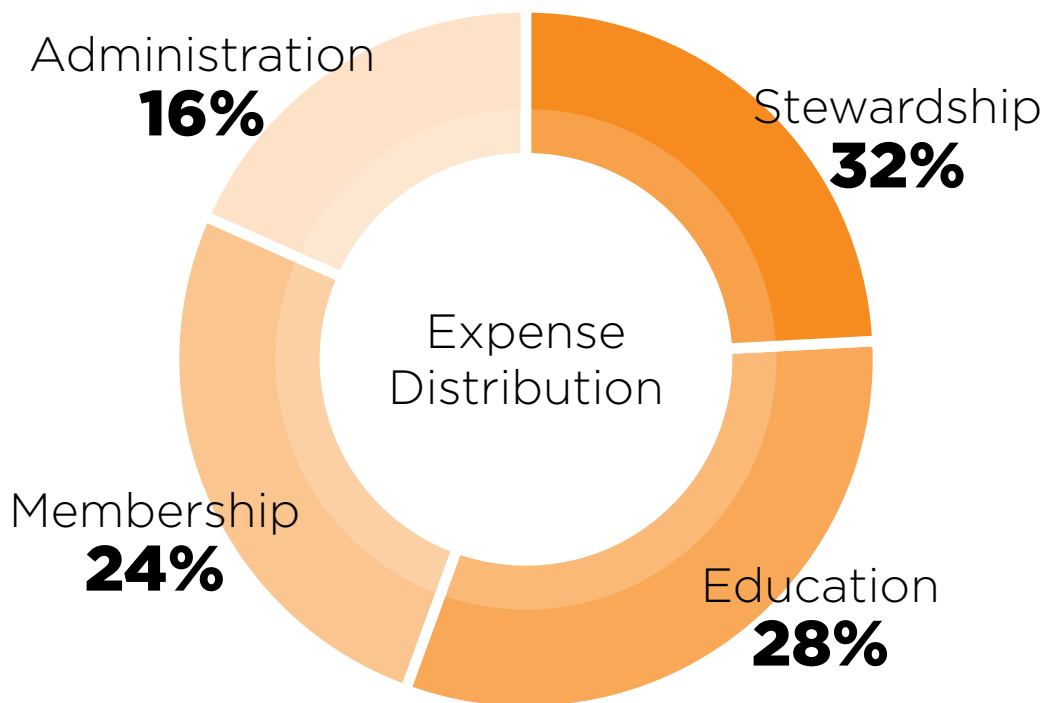
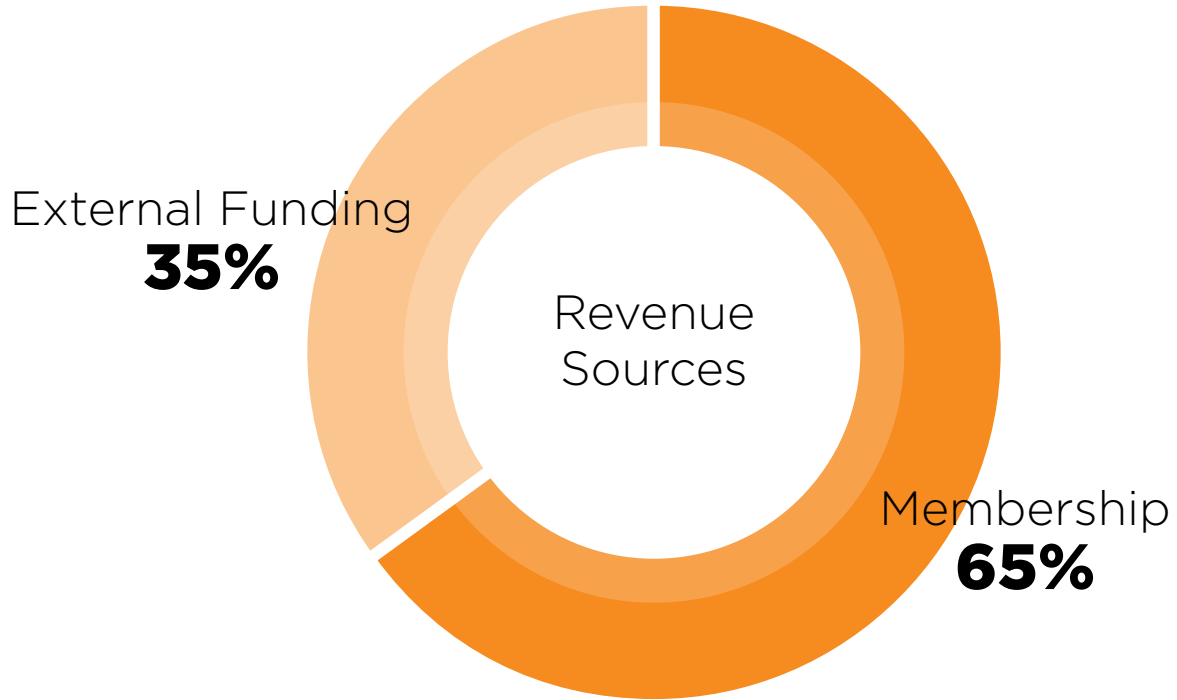
NOTE: Coaches include directors of basketball operations. Scholastic coaches include high school, junior high school, middle school and elementary school. Youth coaches include AAU and club. Support staff includes ADs, SWAs, videographers, grad assistants, managers, etc. Others includes international, inactive, retired coaches; business, strategic partners; athletes, fans, media, etc.).

10-YEAR TREND

Year	Members	Year	Members
2022-23	3,833	2017-18	4,273
2021-22	3,547	2016-17	4,226
2020-21	3,243	2015-16	3,957
2019-20	4,252	2014-15	3,977
2018-19	4,613	2013-14	3,912

FINANCES

The receipt of an early payment comprising one-quarter of the WBCA's corporate sponsor revenue necessitated it be credited to the previous fiscal year. This resulted in a shift "on the books" in the primary revenue source from external funding (35%) to membership (65%) during the 2022-23 association year. Regardless, the WBCA continues to recover financially from the COVID-19 pandemic.



CONVENTION

Attendance at the 2023 WBCA Convention in Dallas —the second since the COVID-19 pandemic forced the cancellation of the 2020 and 2021 conventions — increased significantly over the 2022 convention in Minneapolis. The 2,583 attendees eclipsed the 2,475 attendance of the association’s only other visit to Dallas in 2017. It is the second-highest convention attendance ever, falling just 344 persons shy of the all-time high of 2,927 set in 2019 in Tampa.



Attendance at Past Conventions

Year	Attendance	Location
2023	2,583	Dallas
2022	2,142	Minneapolis
2021	---	<i>Canceled</i>
2020	---	<i>Canceled</i>
2019	2,927	Tampa
2018	2,357	Columbus
2017	2,475	Dallas
2016	2,197	Indianapolis
2015	2,124	Tampa
2014	2,383	Nashville
2013	2,291	New Orleans
2012	2,181	Denver



Photos by Whitney Young/WBCA



CONNECTIONS

In addition to the organic networking opportunities at its yearly convention, the WBCA continues to connect members with one another through virtual programs such as the Coach to Coach Mentoring Program and the the Beyond the Box peer-to-peer program, as well as the popular in-person Mentoring Madness rotation sessions during convention.



Coach to Coach Mentoring Program

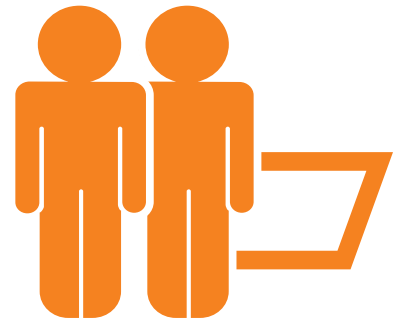
Launched during the 2015-16 membership year, the Coach to Coach Mentoring Program is a traditional, small-group mentoring program designed to bring coaches and staffs together during the basketball season to share ideas, confront challenges and learn from each other's experiences. The program provides a structured platform — monthly conference calls — for organic, open conversation between experienced coaches (who serve as mentors) and those who have recently begun their coaching journeys (mentees).

2022-23 Association Year Participation

- Mentors: 33
- Mentees: 96
- Huddles: 32
- Total participants: 129

Beyond the Box Peer-to-Peer Program

The WBCA launched the new Beyond the Box peer-to-peer program during the 2019-20 membership year for the benefit of seasoned coaches with three or more years of experience in their current roles. Coaches are paired with others at the same level (e.g., head coach with other head coaches, assistant coach with other assistant coaches, etc.) to connect and discuss things such as difficult situations, personal interest topics, coaching journeys and X's and O's.



2022-23 Association Year Participation

- Facilitators: 26
- Other: 83
- Huddles: 26
- Total participants: 109

Mentoring Madness Sessions

First held during the 2016 WBCA Convention, Mentoring Madness is a fast-paced, small-group mentoring session. Participants rotate from table to table for 20-minute mini sessions during which they discuss pertinent issues with a variety of head coaches. The experience helps to build everyone's professional network and opens the door to a convention full of brainstorming and sharing.

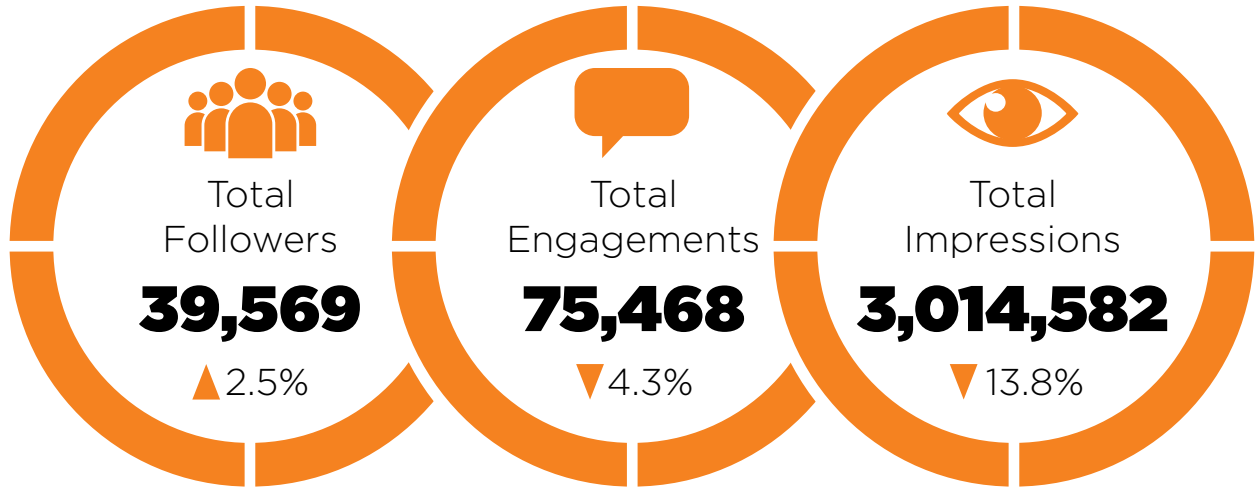
2023 Convention Participation

- Mentors: 40
- Participants: 200
- Total participants: 240



ENGAGEMENT

Total engagements and total impressions on the three main social media platforms declined during the 2022-23 association year. However, the WBCA's engagement rate, which tracks how actively involved our audience is with our content, increased on all three platforms and overall. Engagement rate measures the amount of interaction a piece of content gets compared to how many people simply see it and is a better indicator of brand affinity, credibility, efficacy, and visibility; strength of relationship with the audience; and how well content resonates regardless of how many followers you have.



Although the growth rate slowed, WBCA continued to gain online followers during the 2022-23 association year. Facebook led the way with 1,103 new followers. It was followed closely by Twitter/X with 1,097 new followers.

Engagements include likes, comments, replies, shares and retweets on posts. While total engagements decreased, the WBCA engagement rate increased to **2.5%**, well within the 1 to 5% range, which is considered good.

This is how many times people saw the WBCA brand across all social media platforms. As you might expect, the decrease in total engagements (e.g., retweets and shares) translated into an even larger decline in total impressions.



FACEBOOK

Followers
6,429
Page Likes
5,591
Engagements
14,129
Engagment Rate
7.7%
Impressions
184,239



INSTAGRAM

Followers
4,983
Likes on Posts
9,230
Engagements
9,849
Engagment Rate
3.8%
Impressions
256,442



TWITTER/X

Followers
27,777
Likes on Tweets
8,030
Engagements
51,454
Engagment Rate
2%
Impressions
2,573,901

Numbers do not include WBCA LinkedIn and YouTube accounts.
SOURCE: Sprout Social

ACTIONS

The WBCA continued to grow its programs and initiatives by and for members.

Governance



Active members attending a special legislative session during the 2023 WBCA Convention in Dallas unanimously adopted a comprehensive amendment to Article 4 of WBCA Bylaws that changes the way members of the WBCA Board of Directors are selected. The amendment stipulated that the board through appointments, rather than the membership through elections, will select directors from eligible active members. The board also will appoint officers, other than the secretary (executive director) and treasurer, from among its sitting directors.

The rapidly evolving landscape of college athletics and the uncertainty about who will ultimately become the key decision makers in this space requires the WBCA board in the future to think more strategically, act more deliberately, and rely more heavily on individual board members to engage one on one with leaders at the national and conference levels. This approach is necessary to advance the WBCA's agenda and better ensure its position as an influencer in the decision-making process so that the association can continue to promote and protect the women's basketball coaching profession and the sport itself. A "luck-of-the-draw" popular election of officers and directors is an impediment to the board's ability to do that.

New Partnerships and Programs



Aflac became the WBCA's newest corporate partner and presenting sponsor of the WBCA Assistant Coaches of the Year awards.

The WBCA partnered with BREAKTHRU Brands, a women-owned, women-led agency on a mission to empower women, and those men who support women, by helping them build authentic, personal brands that break barriers and contribute to a more equitable and inclusive world. BREAKTHRU Brands provides educational programming on personal branding at the WBCA Convention. WBCA members also receive a 10-percent discount on the four-week long BREAKTHRU Brand Unlocks program.



The WBCA launched its newest educational program — the Next Generation Institute — during the 2023 WBCA Convention in Dallas. NGI is for experienced associate/assistant coaches who aspire to become a head coach at the NCAA Division I, II or III levels. It consists of a curriculum that focuses on the CEO attributes a modern-day head coach needs to lead a program and be a problem-solver in today's ever-changing landscape of higher education and the enterprise of intercollegiate athletics.

ACTIONS

(cont'd)

Diversity, Equity and Inclusion



The WBCA continued its partnership with RISE, a national nonprofit organization that educates and empowers the sports community to eliminate racial discrimination, champion social justice and improve race relations. RISE conducted an online virtual module on Privilege and Power on Sept. 13, 2022; three in-person sessions during the 2023 WBCA Convention in Dallas; and an online virtual workshop on Microaggressions on June 28.

In its meeting on July 20, the WBCA Board of Directors voted to support Race For Change — a nationwide 5K fundraiser for university diversity, equity and inclusion resources that was originated by UC San Diego — by creating a kit and promoting it to the membership.



The WBCA continues to be an industry leader in efforts to improve gender equity. On July 17, the NCAA announced the creation of the Women's Basketball Invitation Tournament (WBIT) to balance postseason opportunities for women and men. The WBCA is monitoring the progress of the NCAA's negotiations for a new agreement to televise the Division I Women's Basketball Championship and translating that into financial reward for championship success through the payment of monetary units like men's teams are paid.

Online Education

The WBCA once again partnered with the National Association of Basketball Coaches (NABC) to offer the WBCA-NABC Coaches Forum which features panels of college basketball leaders discussing issues and topics relevant to the sport. There were six Coaches Forum presentations during the 2022-23 association year:

- Sept. 21, 2022 — Media Engagement
- Oct. 26, 2022 — International Recruiting
- Dec. 1, 2022 — Search Firm Engagement
- May 24, 2023 — Summer Camp Best Practices
- June 29, 2023 — Fundraising
- Aug. 24, 2023 — Student Manager Development



The mental health of student-athletes and coaches remains a hot topic in women's basketball. Former Duke head coach Joanne P. McCallie and Syracuse head coach Felisha Legette-Jack took over the WBCA's Instagram on May 31 and held a live discussion on mental health in the coaching industry. It was a continuation of the session they held at the 2023 WBCA Convention in Dallas.

ACTIONS

(cont'd)

Storytelling



Coaches+ Media, the new business partnership between the NABC and WBCA, co-produced *Dear Coach Stringer*, a 30-minute documentary on hall of fame coach C. Vivian Stringer, who in 1982 led Cheyney State University, the first HBCU, to the NCAA Women's Final Four.

Dear Coach Stringer, which first aired March 25 on CBS and Paramount+, chronicled the team's groundbreaking 1981-1982 season and highlighted Stringer's legacy through interviews with family, friends, former players and other coaches.



Coaches+ also produced *Knew Me When*, a documentary that tells moving backstories about current WNBA stars with unique insights from their college coaches. The 30-minute TV special, debuted Saturday, June 17th on CBS as a lead-in to the Seattle/Dallas WNBA game, and showcased current and former college coaches including Muffet McGraw, Mike Neighbors, and Adia Barnes, along with several current WNBA stars, including A'ja Wilson, Kelsey Plum, Arike Ogunbowale, Courtney Williams, Jackie Young, and more.



Growing the Game



The University of Louisville women's basketball team and head coach Jeff Walz successfully represented the United States and the WBCA in the second annual *GLOBL JAM* international basketball showcase hosted by Canada Basketball and held July 12-16 in Toronto.

The Cardinals went 3-1 in the tournament, defeating Canada 68-66 in the championship game to win the gold medal.

RECOGNITION

The WBCA continues to operate the most extensive recognition program of any coaches association. During the 2022-23 association year the WBCA presented 17 different awards or honors to more than 700 individuals and teams.

2023 National Women's Basketball Champions



Congratulations to the 2023 NCAA Division I national champion LSU Tigers and head coach Kim Mulkey.

NCAA Division II

Ashland University
Head Coach: Kari Pickens

NCAA Division III

Transylvania University
Head Coach: Juli Fulks

NAIA

Clarke University
Head Coach: Courtney Boyd

NCCAA Division I

College of the Ozarks
Head Coach: Becky Mullis

NCCAA Division II

Champion Christian College
Head Coach: DeAnthony Ellison

USCAA Division I

D'Youville University
Head Coach: Alison Bouman

USCAA Division II

University of Cincinnati-Clermont
Head Coach: Ken Lowe

NJCAA Division I

Northwest Florida State College
Head Coach: Bart Walker

NJCAA Division II

Community College of Baltimore County Essex (MD)
Head Coach: Mike Seney

NJCAA Division III

Rochester Community and Technical College (MN)
Head Coach: Jason Bonde

RECOGNITION

ASSOCIATION-WIDE HONORS

Jostens-Berenson Lifetime Achievement Award



Dee Kantner

Game official

Carol Eckman Integrity in Coaching Award



Coquese Washington

Head Coach, Rutgers University

RECOGNITION

ASSOCIATION-WIDE HONORS (cont'd)

Administrator of the Year



Chris Plonsky

Executive Senior Associate
Athletics Director, Chief of Staff, Senior Woman Administrator
University of Texas

Mel Greenberg National Media Award



Cheryl Coward

Founder
Hoopfeed.com

Mel Greenberg Community Media Award



Danny Davis

Sportswriter
Austin (TX) American-Statesman



VICTORY CLUB

Please notify the WBCA when a victory milestone is reached.

1100 wins

Jeff Jasper, Pascack Valley High School (NJ), 1100

700 wins

Caryn Jarocki, Highlands Ranch High School (CO)
Judy Blinstrub, Babson College
Mark Campbell, Union University

600 wins

Brenda Frese, University of Maryland
Buffie Burson, University of North Georgia
Jeff Mittie, Kansas State University
Terri Ober, San Jose City College

500 wins

Brandon Schneider, University of Kansas
Chris Kielsmeier, Cleveland State University
Jina DeRubbo, Washington & Jefferson University
Joye Lee-McNelis, University of Southern Mississippi
Keith Mondillo, Gwynedd Mercy University

400 wins

Carl Mattei, Denver East High School (CO)

Deena Applebury, University of Mary Washington
Jill Nagel, Rock Bridge High School (MO)
Kirsten Moore, Westmont College
Kristy Trn, Shippensburg University
Laurie Kelly, Gustavus Adolphus College
Matt Borchert, Solano College
Susie Gardner, Mercer University
Terry Canova, UMS-Wright Preparatory School (AL)

300 wins

Alisa Kintner, Widener University
Amy Williams, University of Nebraska
Chris Danehower, Leesville Road High School (NC)
Chris Mouat, Montana State-Northern
Jeff Dow, University of the Incarnate Word
Kevin Woodin, Montana State University Billings

200 wins

Anita Howard, Georgia Southern University
Kristen Gillespie, Illinois State University
Lindsay Woolley, University of Montana Western
Mark Anger, Chabot College

RECOGNITION

ASSOCIATION-WIDE HONORS (cont'd)



Sarah Assante, assistant coach, Dartmouth College
Katrina Beck, assistant coach, Illinois State University
KaeLynn Boyd, assistant coach, University of Texas at Arlington
Alisha Breen, associate head coach, Montana State University Billings
Chelsie Butler, assistant coach, Youngstown State University
Khyreed Carter, assistant coach, Syracuse University
Nina Davis, assistant coach, Middle Tennessee State University
Symone Denham, assistant coach, Bradley University
Jillian Dunston, assistant coach, Drexel University
Sadie Edwards, assistant coach, University of Oregon
Catherine Harrison, assistant coach, Middlebury College
Bri Hutchen, assistant coach, University of Delaware
Jasmine Jenkins, assistant coach, Davidson College
Abby Jump, associate head coach, University of Memphis
Jenna Kotas, assistant coach, Ashland University

Isaac Lu, head coach, Western Nebraska Community College
Olivia Luu, assistant coach, California State Polytechnic University, Pomona
Ariel Massengale, assistant coach, Southern Illinois University Edwardsville
Kabrina Merriweather, assistant coach, University of Memphis
John Montello, assistant coach, Indiana U.-Purdue U. Indianapolis
Mariya Moore, assistant coach, Saint Mary's College
Denise Osahor, assistant coach, University of Oklahoma
Jacob Roark, assistant coach, Faulkner University
Kylie Russell, head coach, Milligan University
Ali Sanders, assistant coach, Harvard University
Allison Spaschak, assistant coach, University of Rochester
Hannah Varel, assistant coach, Transylvania University
Jessica Venturelli, head coach, Holmdel High School
Shelby Wheeler, associate head coach, University of Pikeville
Jeanne-Marie Wilson, assistant coach, Howard University

RECOGNITION

NCAA DIVISION I HONORS

National Coach of the Year



Dawn Staley

Head Coach, University of South Carolina

Spalding Maggie Dixon Rookie Coach of the Year



Shawn Poppie

Head Coach, Univ. of Tennessee-Chattanooga

Assistant Coach of the Year presented by Aflac



Jan Jensen

Associate Head Coach, University of Iowa

RECOGNITION

NCAA DIVISION I HONORS (cont'd)

Wade Trophy (Player of the Year)



Caitlin Clark

University of Iowa

Defensive Player of the Year



Cameron Brink

Stanford University

Freshman Player of the Year presented by adidas



Ta’Niya Latson

Florida State University

RECOGNITION

NCAA DIVISION I HONORS (cont'd)



Aliyah Boston, University of South Carolina
Cameron Brink, Stanford University
Caitlin Clark, University of Iowa
Mackenzie Holmes, Indiana University
Ashley Joens, Iowa State University

Elizabeth Kitley, Virginia Tech University
Diamond Miller, University of Maryland
Alissa Pilli, University of Utah
Angel Reese, Louisiana State University
Maddy Siegrist, Villanova University

Honorable Mention

Georgia Amooore, Virginia Tech University
Sarah Andrews, Baylor University
Angel Baker, University of Mississippi
Raegan Beers, Oregon State University
Grace Berger, Indiana University
Leigha Brown, University of Michigan
Kamilla Cardoso, University of South Carolina
Sonia Citron, University of Notre Dame
Makira Cook, University of Illinois
Zia Cooke, University of South Carolina
Monika Czinano, University of Iowa
Aaliyah Edwards, University of Connecticut
Yvonne Ejim, Gonzaga University
Dyaisha Fair, Syracuse University
Dulcy Fankam Mendjiadeu, University of South Florida
Rori Harmon, University of Texas
McKenna Hofschild, Colorado State University
Jordan Horston, University of Tennessee
Abbey Hsu, Columbia University
Rickeya Jackson, University of Tennessee
Taiyanna Jackson, University of Kansas

Diamond Johnson, North Carolina State University
Haley Jones, Stanford University
Deja Kelly, University of North Carolina
Gianna Kneepkens, University of Utah
Ta'Niya Latson, Florida State University
Charlisse Leger-Walker, Washington State University
Lou Lopez Sénéchal, University of Connecticut
Taylor Mikesell, Ohio State University
Olivia Miles, University of Notre Dame
Tishara Morehouse, Florida Gulf Coast University
Alexis Morris, Louisiana State University
Aneesah Morrow, DePaul University
Charisma Osborne, UCLA
Taylor Robertson, University of Oklahoma
Celeste Taylor, Duke University
Kaylynn Truong, University of Gonzaga
Elena Tsineke, University of South Florida
Alyssa Ustby, University of North Carolina
Hailey Van Lith, University of Louisville
Keishana Washington, Drexel University
Madi Williams, University of Oklahoma

National Coach of the Year Finalists

Jennie Baranczyk, head coach, University of Oklahoma
Kenny Brooks, head coach, Virginia Tech University
Jose Fernandez, head coach, University of South Florida
Shauna Green, head coach, University of Illinois
Niele Ivey, head coach, University of Notre Dame

Lindy La Rocque, head coach, University of Nevada
Teri Moren, head coach, Indiana University
Kim Mulkey, head coach, Louisiana State University
Lynne Roberts, head coach, University of Utah
Dawn Staley, head coach, University of South Carolina

RECOGNITION

NCAA DIVISION I HONORS (cont'd)



ACADEMIC TOP 25 TEAM HONOR ROLL

Rank	Institution	Head Coach	GPA
1	Robert Morris University	Charlie Buscaglia	3.807
2	University at Albany	Colleen Mullen	3.791
3	Northern Illinois University	Lisa Carlsen	3.778
4	University of North Florida	Darrick Gibbs	3.769
5	University of Maine	Amy Vachon	3.766
6	University of Wisconsin-Green Bay	Kevin Borseth	3.758
7	South Dakota State University	Aaron Johnston	3.745
T8	Lipscomb University	Lauren Sumski	3.714
T8	University of Northern Iowa	Tanya Warren	3.714
10	Boise State University	Gordy Presnell	3.702
11	Houston Christian University	Donna Finnie	3.701
12	Youngstown State University	John Barnes	3.695
13	Belmont University	Bart Brooks	3.676
14	Western Illinois University	JD Gravina	3.659
15	Marist College	Brian Giorgis	3.652
16	Drake University	Allison Pohlman	3.628
17	University of Portland	Michael Meek	3.605
18	Campbell University	Ronny Fisher	3.597
19	Purdue University Fort Wayne	Maria Marchesano	3.596
20	University of Washington	Tina Langley	3.585
21	Manhattan College	Heather Vulin	3.576
22	Kent State University	Todd Starkey	3.575
23	University of Missouri	Robin Pingeton	3.571
24	Eastern Illinois University	Matt Bollant	3.569
25	Columbia University	Megan Griffith	3.566

Special Mention

Drexel University, Amy Mallon, 3.565
 Abilene Christian University, Julie Goodenough, 3.560
 University of Toledo, Tricia Cullop, 3.556
 Indiana University, Teri Moren, 3.553
 University of Wisconsin-Milwaukee, Kyle Rechlicz, 3.552
 University of South Dakota, Kayla Karius, 3.551
 Montana State University, Tricia Binford, 3.547
 Canisius University, Sahar Nusseibeh, 3.531
 University of Illinois, Shauna Green, 3.531
 University of the Pacific, Bradley Davis, 3.524
 Princeton University, Carla Berube, 3.515
 Gonzaga University, Lisa Fortier, 3.515
 University of Akron, Ryan Gensler, 3.503
 Duke University, Kara Lawson, 3.501
 Bowling Green State University, Robyn Fralick, 3.501
 Stonehill College, Trisha Brown, 3.494

Michigan State University, Suzy Merchant, 3.493
 University of North Dakota, Mallory Bernhard, 3.493
 New Jersey Institute of Technology, Mike Lane, 3.490
 Creighton University, Jim Flanery, 3.490
 University of Denver, Doshia Woods, 3.483
 Lehigh University, Addie Micir, 3.477
 Yale University, Dalila Eshe, 3.475
 Quinnipiac University, Tricia Fabbri, 3.473
 University of Nebraska, Amy Williams, 3.473
 University of Richmond, Aaron Rousell, 3.472
 Santa Clara University, William Carr, 3.468
 Virginia Tech, Kenny Brooks, 3.466
 University of Montana, Brian Holsinger, 3.465
 Tennessee Tech University, Kim Rosamond, 3.460

Continued on page 38

RECOGNITION

NCAA DIVISION II HONORS

National Coach of the Year



Kari Pickens

Head Coach, Ashland University

Assistant Coach of the Year presented by Aflac



Jenna Kotas

Assistant Coach, Ashland University

Player of the Year



Brooke Olson

University of Minnesota Duluth

RECOGNITION

NCAA DIVISION II HONORS (cont'd)



Hannah Belanger, Truman State University
Samantha Bowman, Central Washington University
Breanna Campbell, Glenville State College
Grace Foster, Lubbock Christian University
Ariel Jones, Shippensburg University

Sydney Kin, University of Tampa
Dawnyel Lair, California State University,
Dominguez Hills
Brooke Littrell, University of Central Missouri
Brooke Olson, University of Minnesota Duluth
Annie Roshak, Ashland University

Honorable Mention

Lytoya Baker, Le Moyne College
Kaylee DaMitz-Holt, Drury University
Aislinn Duffy, Augustana University
Rana Elhusseini, Edinboro University
Nicole Flennaugh, California State University, Los
Angeles
Erin Fry, Regis University
Ashley Ingram, Texas Woman's University
Jaclyn Jarnot, University of West Florida
Tre'Zure Jobe, Emporia State University
Leah Johnson, West Chester University
Mackenzie Johnson, Young Harris College
Sawyer Lloyd, Angelo State University
Caroline Martin, University of North Georgia
Haley Meinel, Thomas Jefferson University
Sofia Persson, Eckerd College

Samantha Pirosko, Gannon University
Haley Schubert, Lee University
Emily Spitzley, Grand Valley State University
Abby Spurgin, Hawaii Pacific University
Ashley Steffek, Colorado School of Mines
Lacy Stokes, Missouri Southern State University
Melijah Sullivan, University of Tampa
Jami Tham, Tusculum University
Adriana Timberlake, Southern New Hampshire
University
Taylor Tomlinson, American International College
Bryanna Troutman, Wingate University
Brooke Walling, Western Washington University
Maggie Whitmore, Bentley University
Braelyn Wykle, Carson-Newman University
Kaitlyn Zarycki, Saginaw Valley State University

National Coach of the Year Finalists

John Bonner, California State University,
Dominguez Hills
Carrie Eighmey, University of Nebraska at
Kearney
Paul Honsinger, Eckerd College
Molly Marrin, Regis University

Justin Payne, Georgia Southwestern State
University
Kerry Phayre, Assumption University
Kari Pickens, Ashland University
Kimberly Stephens, Glenville State College

RECOGNITION

NCAA DIVISION II HONORS (cont'd)



ACADEMIC TOP 25 TEAM HONOR ROLL

Rank	Institution	Head Coach	GPA
1	Upper Iowa University	Justin Maass	3.894
2	Lubbock Christian University	Steve Gomez	3.882
3	University of Montevallo	Gary Van Atta	3.841
4	Ashland University	Kari Pickens	3.826
5	Embry-Riddle Aeronautical Univ. (FL)	Lisa Wilson	3.822
6	Fort Hays State University	Tony Hobson	3.805
7	Rockhurst University	Larry Park	3.776
8	Lee University	Marty Rowe	3.763
9	Mercyhurst University	Brooklyn Kohlheim	3.753
T10	University of Wisconsin Parkside	Jen Conely	3.740
T10	Montana State University Billings	Kevin Woodin	3.740
12	William Jewell College	Jill Slominski	3.736
T13	Northern Michigan University	Casey Thousand	3.723
T13	Fort Lewis College	Taylor Harris	3.723
15	McKendree University	Kari Kerkhoff	3.719
16	Tiffin University	Josh Mason	3.713
17	Truman State University	Theo Dean III	3.707
18	Maryville University	Brita Hand	3.706
19	Kutztown University	Janet Malouf	3.701
T20	Missouri Univ. Science and Technology	Kira Carter	3.695
T20	Southwest Minnesota State University	Tom Webb	3.695
22	University of Central Missouri	David Slifer	3.694
23	Northwest Missouri State	Austin Meyer	3.690
24	Pace University	Carrie Seymour	3.688
25	St. Cloud State University	Lori Fish	3.682

Special Mention

Thomas Jefferson University, Tom Shirley, 3.674
 University of Alaska Fairbanks, Amy Donovan, 3.665
 Texas Woman's University, Beth Jillson, 3.659
 Seattle Pacific University, Mike Simonson, 3.653
 Ursuline College, Shannon Sword, 3.648
 Pittsburg State University, Amanda Davied, 3.644
 Northwood University, Autumn Haggadone, 3.643
 St. Thomas Aquinas College, Bill Cleary, 3.642
 California State Polytechnic University, Pomona, Danelle Bishop, 3.641
 Wayne State University (MI), Carrie Lohr, 3.632
 Minot State University, Michael Brandt, 3.630

Point Loma Nazarene University, Charity Elliott, 3.629
 California State University East Bay, Jenny Thigpin, 3.627
 Michigan Technological University, Samantha Clayton, 3.616
 Minnesota State University, Emilee Thiesse, 3.606
 Oklahoma Baptist University, Bo Overton, 3.600
 East Stroudsburg University, Stephanie Del Preore, 3.590
 Wingate University, Ann Hancock, 3.589

Continued on page 38

RECOGNITION

NCAA DIVISION III HONORS

National Coach of the Year



Lynn Hersey

Head Coach, Smith College

Assistant Coach of the Year presented by Aflac



Amy Endler

Assistant Coach, Moravian University

Player of the Year



Morgan Morrison

Smith College

RECOGNITION

NCAA DIVISION III HONORS (cont'd)



Natalie Bruns, New York University
Aleah Grundahl, University of Wisconsin-Whitewater
Madison Kellione, Transylvania University
Elyce Knudsen, Millikin University
Bridget Monaghan, University of Scranton

Morgan Morrison, Smith College
Maggie Russell, Tufts University
Brynn Serbin, Ohio Northern University
Anaya Simmons, Christopher Newport University
Katie Titus, University of Rochester

Honorable Mention

Maya Arnott, Washington University in St. Louis
Claire Baguley, Hope College
Korin Baker, Whitman College
Anna Barry, Eastern Connecticut State University
Megan Bauman, Babson College
Megan Bealer, DeSales University
Natasha Blizzard, Hardin-Simmons University
Gabrielle Boggs, Albright College
Claire Brock, Emory University
Reilly Campbell, Trinity College (CT)
Kacie Carollo, University of Wisconsin-Whitewater
Jordan Carpenter, University of Mary Washington
Emily Dorn, Ithaca College
Meghan Dryburgh, Washington & Jefferson College
Sondra Fan, Christopher Newport University
Syrira Faraj, The Sage Colleges
Savannah Feenstra, Hope College
Brianna Fitzgerald, SUNY at New Paltz
Meghan Graff, Bates College
Sam Hourihan, Springfield College

Lauren Hunter, U.S. Merchant Marine Academy
Grace Hynes, University of Chicago
Kaci Kranson, University of Scranton
Maddy Mandyck, Williams College
Sami Martin, Loras College
Shannon McCoy, Kean University
Summer McNulty, Elizabethtown College
Kaylee Murphy, University of California-Santa Cruz
Alexa Mustafaj, Middlebury College
Parris Parmer, Hardin-Simmons University
Belle Pellecchia, New York University
Olivia Rangel, Carroll University
Damaris Rodriguez, New Jersey City University
Jessie Ruden, University of Wisconsin-Eau Claire
Anna Sanders, Gustavus Adolphus College
Mary Schleusner, Washington & Lee University
Symantha Shackelford, Marymount University
Mackenzie Szlosek, Gettysburg College
Gabby Timmer, Calvin University
Zoë Tomlinson, Colorado College

National Coach of the Year Finalists

Meg Barber, New York University
Bill Broderick, Christopher Newport University
Jenna Cosgrove, Rhode Island College
Michelle Ferenz, Whitman College
Julie Fulks, Transylvania University
Lynn Hersey, Smith College
Mark Huelsman, Ohio Northern University

Laurie Kelly, Gustavus Adolphus College
Olivia Lett, Millikin University
Heather Macy, Greensboro College
Benjamin O'Brien, University of Scranton
Jill Pace, Tufts University
Jessica Turner, Skidmore College

RECOGNITION

NCAA DIVISION III HONORS (cont'd)



ACADEMIC TOP 25 TEAM HONOR ROLL

Rank	Institution	Head Coach	GPA
1	Wartburg College	Bob Amsberry	3.872
2	Millikin University of Decatur	Olivia Lett	3.805
3	Martin Luther College	Dan Gawrisch	3.786
4	Emerson College	Bill Gould	3.766
5	Saint Mary's University of Minnesota	David Foley	3.761
6	Johns Hopkins University	Katherine Bixby	3.753
7	Marywood University	Jen Carleton	3.747
8	St. John Fisher College	Melissa Kuberka	3.745
T9	Clark University	Bridgette Reyes	3.741
T9	Baldwin Wallace University	Cheri Harrer	3.741
11	Trine University	Andy Rang	3.739
12	New York University	Meg Barber	3.735
13	Washington and Lee University	Christine Clancy	3.717
14	Misericordia University	Jason Rhine	3.714
15	Elizabethtown College	Veronica Nolt	3.710
16	Manchester University	Josh Dzurick	3.703
17	University Of Wisconsin-Eau Claire	Tonja Englund	3.698
18	Case Western Reserve University	Jennifer Reimer	3.696
19	Middlebury College	KJ Krasco	3.695
20	Gustavus Adolphus College	Laurie Kelly	3.688
21	Pacific Lutheran University	Lee Aduddell	3.684
22	Simpson College	Brian Niemuth	3.680
23	University of Wisconsin-River Falls	Shelby Lyman	3.668
24	University of Chicago	Maria Williamson	3.667
25	University of Wisconsin-Whitewater	Keri Carollo	3.663

Special Mention

Skidmore College, Jessica Turner, 3.660
 John Carroll University, Elizabeth Andrews, 3.660
 Bethany College, Mikayla Lopez, 3.657
 University of Wisconsin-Stevens Point, Matt Hockett, 3.657
 Colorado College, Katherine Menendez, 3.654
 Bryn Mawr College, Carla Coleman, 3.652
 Oberlin College, Stephany Dunmyer, 3.650
 University of Redlands, Rich Murphy, 3.649
 Massachusetts Institute of Technology, Lucia Robinson-Griggs, 3.647
 Saint Vincent College, James Petruska, 3.645
 Gwynedd Mercy University, Keith Mondillo, 3.644

Macalester College, Katie Kollar, 3.634
 Messiah University, Mike Miller, 3.627
 SUNY Geneseo, Alyssa Polosky, 3.621
 Luther College, Amanda Bailey, 3.620
 Shenandoah University, Melissa Smeltzer-Kraft, 3.619
 Concordia College, Kim Wagers, 3.614
 Springfield College, Naomi Graves, 3.613
 DePauw University, Kristin Huffman, 3.613
 Westminster College, Talisha Washington, 3.611
 Husson University, Kissy Walker, 3.609

Continued on page 39

RECOGNITION

NAIA HONORS

National Coach of the Year



Ginger Colvin

Head Coach, Campbellsville University

Assistant Coach of the Year presented by Aflac



Caelyn Orlandi

Assistant Coach, Lewis-Clark State College

Player of the Year



Ella Collier

Marian University

RECOGNITION

NAIA HONORS (cont'd)



Melissa Akullu, Vanguard University
Zoie Barth, Thomas More University
Stefanie Berberabe, Westmont College
Grace Beyer, University of Health Sciences and
Pharmacy
Sandra Cannady, Loyola University

Ella Collier, Marian University
Ella Skeens, University of Rio Grande
Kyra Whitaker, Indiana Institute of Technology
Kaitlynn Wilks, Campbellsville University
Taya Wilson, Sterling College

Honorable Mention

Nequoia Adams, Faulkner University
Kertisa Amos, Texas Wesleyan University
Claire Austin, Saint Xavier University
Peyton Banks, Siena Heights University
Kiara Brown, Menlo College
Shy Christopher, Mid-America Christian University
Jenna Cooper-Jackson, Wayland Baptist
University
Rebekah Engle, William Carey University
Brynley Fitzgerald, University of Montana-Western
Kennedy Hansberry, Loyola University

Courtney Hurst, Thomas More University
Sha'kyia Parker, Siena Heights University
Jamie Pickens, Carroll College
Courtney Pritchett, Campbellsville University
Faith Ross, Bellevue University
Zoe Rust, Tabor College
Kennedy Schlabach, Keiser University
Karsen Schultz, Sterling College
Asha Scott, Bellevue University
Tarrah Stephens, John Brown University

National Coach of the Year Finalists

Jessie Biggs, Indiana Institute of Technology
Ginger Colvin, Campbellsville University
Brenita Jackson, Texas Wesleyan University

Kellie Kennedy, Loyola University
Kirsten Moore, Westmont College
Tarniesha Scott, Ottawa University (Kansas)

RECOGNITION

NAIA HONORS (cont'd)



ACADEMIC TOP 25 TEAM HONOR ROLL

Rank	Institution	Head Coach	GPA
1	University of Pikeville	Clifton Williams	3.877
2	Hastings College	Jina Douglas	3.808
3	University of Providence	Bill Himmelberg	3.794
4	Tabor College	Shawn Reed	3.783
5	Sterling College	K.C. Bassett	3.759
T6	Northwestern College	Kristin Rotert	3.757
T6	John Brown University	Jeff Soderquist	3.757
8	University of Jamestown	Thad Sankey	3.755
9	Freed-Hardeman University	Joshua Epperson	3.746
10	Grand View University	Jasmine Stohr	3.724
11	University of the Cumberlands	Rick Reeves	3.718
12	Mid-America Christian University	Hannah Moeller	3.716
13	Taylor University	Jody Martinez	3.661
14	Faulkner University	Reed Sutton	3.636
15	Eastern Oregon University	Anji Weissenfluh	3.630
16	Kansas Wesleyan University	Ryan Showman	3.619
17	Grace College	Dan Davis	3.609
18	Carroll College	Rachelle Sayers	3.598
19	Embry-Riddle Aeronautical Univ. (AZ)	Michael Trujillo	3.588
20	Culver-Stockton College	Janette Burgin	3.571
21	Waldorf University	Shawn Chaffin	3.566
22	Lewis-Clark State College	Brian Orr	3.546
23	Columbia College (MO)	James Arnold	3.520
24	Indiana Institute of Technology	Jessica Biggs	3.490
25	University of Rio Grande	David Smalley	3.464

Special Mention

Westmont College, Kirsten Moore, 3.453
Warner University, Nikki Jessee, 3.438

Lourdes University, Tandy Bradford, 3.392
Montana State-Northern, Chris Mouat, 3.344

RECOGNITION

TWO-YEAR COLLEGE HONORS

National Coach of the Year



Jeff Allen

Head Coach, Collin College

Assistant Coach of the Year presented by Aflac



Jen Franceson

Assistant Coach, Kirkwood Community College

Player of the Year



Alexia Dizeko

South Georgia Technical College

RECOGNITION

TWO-YEAR COLLEGE HONORS (cont'd)



Princess Anderson, Pratt Community College
 Alexia Dizeko, South Georgia Technical College
 Fanta Gassama, South Georgia Technical College
 Deajanae Harvey, Palomar College
 Waiata Jennings, Collin College

Tasia Jordan, Kirkwood Community College
 Marie Kenembeni, Angelina College
 Emily Strachan, Central Maine Community College
 Shaulana Wagner, Wabash Valley College
 Sakyia White, Jones College

Honorable Mention

Alyssa Berry, Hill College
 En'Dya Buford, Jones College
 Monique Cavness, Las Positas College
 Mackenzie Hart, Johnson County Community College
 Ashley Hawkins, Cypress College
 Olivia Hayenga, Minnesota West Community & Technical College
 Nyla Inmon, Kilgore College

Kaila Kelley, Trinity Valley Community College
 Luana Leite, South Georgia Technical College
 Ma'Kaila Lewis, Kilgore College
 Destinee McDowell, Trinity Valley Community College
 LuLu Salloom, College of the Canyons
 Meloney Thames, Jones College
 Alyssia Thorne, Kilgore College
 Delma Zita, New Mexico Junior College



ACADEMIC TOP 25

TEAM HONOR ROLL

Rank	Institution	Head Coach	GPA
1	Alpena Community College	Cynthia DeRocher	3.615
2	Solano College	Matt Borchert	3.528
3	New Mexico Junior College	Austin Mefford	3.491
4	Minnesota West Comm & Tech College	Rosalie Hayenga	3.452
5	Highland Community College	Jordon O'Brien	3.381
6	Ventura College	Ned Mircetic	3.337
7	San Jose City College	Terri Oberg-Hearn	3.251
8	Arkansas State University Mid-South	Addie B. Lees	3.178
9	Howard College	John Ishee	3.169
10	Pratt Community College	Eric Rodewald	3.037

Only 10 institutions eligible for ranking in the two-year college division.

RECOGNITION

HIGH SCHOOL HONORS

National Coach of the Year



Melissa Hearlihy

Head Coach, Harvard-Westlake School (CA)

Assistant Coach of the Year presented by Aflac



Vanessa Espinoza

Assistant Coach, Denver East High School (CO)

Player of the Year



Judea Watkins

Sierra Canyon School (CA)

RECOGNITION

HIGH SCHOOL HONORS (cont'd)



Kamorea Arnold, Germantown High School (WI)
Brea Cunningham, La Jolla Country Day School (CA)
Aalyah DelRosario, The Webb School (TN)
Jadyn Donovan, Sidwell Friends School (DC)
Milaysia Fulwiley, W. J. Keenan High School (SC)

Hannah Hidalgo, Paul VI High School (NJ)
Courtney Ogden, Westminster School (GA)
Taliah Scott, St. John's Country Day School (FL)
Judea Watkins, Sierra Canyon School (CA)
Mikaylah Williams, Parkway High School (LA)

Honorable Mention

Sunaja Agara, Hopkins High School (MN)
Sofia Bell, Jesuit High School (OR)
Madison Booker, Germantown High School (MS)
Zoe Brooks, Saint John Vianney High School (NJ)
Addyson Brown, Derby Senior High School (KS)
Essence Cody, Valdosta High School (GA)
Montaya Dew, Centennial High School (NV)
Sahnaya Jah, Montverde Academy (FL)
Kymora Johnson, Saint Annes-Belfield High School (VA)
Tessa Johnson, Saint Michael Albertville High School (MN)

Ari Long, Valley View High School (CA)
Amanda Muse, Heritage High School (CA)
Riley Nelson, Bullis School (MD)
Laila Reynolds, Shabach Christian Academy (MD)
Emma Risch, Palm Bay High School (FL)
Khalil Robinson, Perry High School (AZ)
Malia Samuels, Garfield High School (WA)
Ashlynn Shade, La Lumiere School (IN)
Jada Williams, La Jolla Country Day School (CA)
Sahara Williams, West High School (IA)

MaxPreps/WBCA Player of the Week

Week ending Nov. 28, 2022

Region 1 - N/A
Region 2 - Arianna Mercado, East New York Family Academy (Brooklyn, N.Y.)
Region 3 - Ka'Derrah Beason, High Point Academy (Spartanburg, S.C.)
Region 4 - Shakara Mccline, East St. Louis High School (Ill.)
Region 5 - Meghan Campise, Crocker High School (Crocker, Mo.)
Region 6 - Shunteria Anumele, Royal High School (Brookshire, Texas)
Region 7 - Madelynn Muniz, Boulder Creek High School (Anthem, Ariz.)
Region 8 - Jillian Nowicki, Academy of Our Lady of Peace (San Diego, Calif.)
Region 9 - Emely Rodriguez, Horeb Christian School (Hialeah, Fla.)

Week ending Dec. 4, 2022

Region 1 - Sophie Mahar, Rocky Hill Country Day School (East Greenwich, R.I.)
Region 2 - Maddison Maynard, Panther Valley High School (Lansford, Pa.)
Region 3 - Sylvie Jackson, Louisa County High School (Mineral, Va.)
Region 4 - Zarina Fader, Lawrence Upper High School (Sagamore Hills, Ohio)
Region 5 - Destiny Buerge, Carl Junction High School (Carl Junction, Mo.)
Region 6 - Aaliyah Chavez, Monterey High School (Lubbock, Texas)
Region 7 - Taliyah Henderson, Salpointe Catholic High School (Tucson, Ariz.)
Region 8 - Akridge (Koko) Solangelei, Mater Dei Catholic High School (Chula Vista, Calif.)
Region 9 - Avery Chatman, East Lake High School (Tarpon Springs, Fla.)

Continued on page 36

RECOGNITION

HIGH SCHOOL HONORS (cont'd)

MaxPreps/WBCA Player of the Week **Continued from page 35**

Week ending Dec. 11, 2022

- Region 1 - Alicia Browder, Neighborhood House Charter School (Dorchester, Minn.)
Region 2 - Kaitlyn Raguso, Hendrick Hudson High School (Montrose, N.Y.)
Region 3 - Nyla Brooks, Bishop Ireton High School (Alexandria, Va.)
Region 4 - Amiyah Reynolds, South Bend Washington High School (South Bend, Ind.)
Region 5 - Trinity Lutters, Osborne High School (Osborne, Kan.)
Region 6 - Eliza Reyna, Rio Hondo High School (Rio Hondo, Texas)
Region 7 - Faith James, Ganado High School (Ganado, Ariz.)
Region 8 - Chloe Briggs, Ontario Christian High School (Ontario, Calif.)
Region 9 - Taiylor Williams, Brookstone High School (Columbus, Ga.)

Week ending Dec. 18, 2022

- Region 1 - Shalyn Smith, Middletown High School (Middletown, Conn.)
Region 2 - Jenna Muha, Shade-Central High School (Cairnbrook, Pa.)
Region 3 - Raina McGowens, Wren High School (Piedmont, S.C.)
Region 4 - Josie Trabel, East Central High School (St. Leon, Ind.)
Region 5 - Chloe Hanel, Clarkson/Leigh High School (Clarkson, Neb.)
Region 6 - Madilynn Vuncannon, Walnut High School (Walnut, Miss.)
Region 7 - Lauren Olsen, Douglas High School (Douglas, Wyo.)
Region 8 - Ellie Marble, La Conner High School (La Conner, Wash.)
Region 9 - MJ Simmons, Community High School (Unionville, Tenn.)

Week ending Jan. 8, 2023

- Region 1 - Sarah Berube, Lincoln School (Providence, R.I.)
Region 2 - Devyn Quigley, Manchester Township High School (Lakehurst, N.J.)
Region 3 - Zamareya Jones, North Pitt High School (Bethel, N.C.)
Region 4 - Gloria Brewer, Greencastle High School (Greencastle, Ind.)
Region 5 - Keziah Lofton, Bethany High School (Bethany, Okla.)
Region 6 - Maegan Riebel, Geneva School of Boerne (Boerne, Texas)
Region 7 - Adriana Hernandez, Bourgade Catholic High School (Phoenix, Ariz.)

- Region 8 - Aaliyah Stanton, Rancho Christian School (Temecula, Calif.)
Region 9 - ZaKiyah Johnson, Sacred Heart Academy (Louisville, Ky.)

Week ending Jan. 22, 2023

- Region 1 - Lauren Bousquet, Moses Brown School (Providence, R.I.)
Region 2 - Hadleigh McGoskey, Ravenswood High School (Ravenswood, W.V.)
Region 3 - Jordin Richardson, Nansemond River High School (Suffolk, Va.)
Region 4 - Xamiya Walton, Butler College Prep (Chicago, Ill.)
Region 5 - E'Niyah Holmes, Calvin High School (Calvin, Okla.)
Region 6 - Bella Hines, Eldorado High School (Albuquerque, N.M.)
Region 7 - Natalie Scherzer, Chaparral High School (Scottsdale, Ariz.)
Region 8 - Ari Long, Valley View High School (Moreno Valley, Calif.)
Region 9 - Taliyah Scott, St. Johns Country Day School (Orange Park, Fla.)

Week ending Jan. 29, 2023

- Region 1 - Abigail Bradbury, Valley Regional High School (Deep River, Conn.)
Region 2 - Devyn Quigley, Manchester Township High School (Lakehurst, N.J.)
Region 3 - Brecken Snotherly, Eastern Randolph High School (Ramseur, N.C.)
Region 4 - Shelby Bowman, Biggsville West Central High School (Biggsville, Ill.)
Region 5 - Raegan McCowan, Lebanon High School (Lebanon, Mo.)
Region 6 - Emily Kate Jones, First Baptist Academy (Dallas, Texas)
Region 7 - Tatiana Harness, Leading Edge Academy Gilbert Early College (Gilbert, Ariz.)
Region 8 - Elliott Schwartz, John Adams Academy (El Dorado Hills, Calif.)
Region 9 - Breanna Ortega, Anclote High School (Holiday, Fla.)

Week ending Feb. 5, 2023

- Region 1 - Sarah Berube, Lincoln School (Providence, R.I.)
Region 2 - Gretchen Dolan, Williamsville South High School (Williamsville, N.Y.)
Region 3 - J'Niya Weaver, Mt. Zion Preparatory Academy (Lanham, Md.)
Region 4 - Ava Weber, Corydon Central High School (Corydon, Ind.)
Region 5 - Alissa Brabec, St. Mary's High School (O'Neill, Neb.)

Continued on page 37

RECOGNITION

HIGH SCHOOL HONORS (cont'd)

MaxPreps/WBCA Player of the Week Continued from page 36

Region 6 - Eryn Brown, Istrouma High School (Baton Rouge, La.)

Region 7 - Jerzy Robinson, Desert Vista High School (Phoenix, Ariz.)

Region 8 - Jada Zarembka, California School for the Deaf-Riverside (Riverside, Calif.)

Region 9 - Zoe Tennell, The Villages Charter School (The Villages, Fla.)

Week ending Feb. 12, 2023

Region 1 - Audrey MacKie, Oceanside High School (Rockland, Maine)

Region 2 - Senaya Parker, Samuel Fels High School (Philadelphia, Pa.)

Region 3 - Zamareya Jones, North Pitt High School (Bethel, N.C.)

Region 4 - Leah French, Engadine High School (Engadine, Mich.)

Region 5 - India Willis, Macks Creek High School (Macks Creek, Mo.)

Region 6 - Madison Hurta, San Marcos HomeSchool (San Marcos, Texas.)

Region 7 - Aiyanna Perkins, McClintock High School (Tempe, Ariz.)

Region 8 - Nia Rogers, Redwood Christian School (San Lorenzo, Calif.)

Region 9 - Madi Lewis, Columbia Academy (Columbia, Tenn.)

Week ending Feb. 26, 2023

Region 1 - Catherine Antwi, Lowell Catholic High School (Lowell, Mass.)

Region 2 - Kiyomi McMiller, Life Center Academy (Burlington, N.J.)

Region 3 - Ka'Nyah O'Neal, Southside High School (Chocowinity, N.C.)

Region 4 - Maddyn Greenway, Providence Academy (Plymouth, Minn.)

Region 5 - Marlie Wright, Greenfield High School (Greenfield, Mo.)

Region 6 - Saniya Burks, Rice High School (Rice, Texas)

Region 7 - La'la Baldwin, Draper American Preparatory Academy (Draper, Utah)

Region 8 - Layla Faught, Las Vegas High School (Las Vegas, N.V.)

Region 9 - Madi Meade, Floyd Central High School (Eastern, Kent.)

Week ending March 5, 2023

Region 1 - Jenny Lopez, Lyman Memorial High School (Lebanon, Conn.)

Region 2 - Jenna Muha, Shade-Central City High School (Cairnbrook, Pa.)

Region 3 - Kymora "Mo" Johnson, St. Anne's-Belfield School (Charlottesville, Va.)

Region 4 - Adelyn Moore, Caro High School (Caro, Mich.)

Region 5 - Halle Dolliver, Malcolm High School (Malcolm, Neb.)

Region 6 - Sydney Benally, Sandia High School (Albuquerque, N.M.)

Region 7 - Kailey Woolston, Lone Peak High School (Highland, Utah)

Region 8 - Lauren Harris, Faith Christian High School (Yuba City, Calif.)

Region 9 - ZaKiyah Johnson, Sacred Heart Academy (Louisville, Ky.)



RECOGNITION

NCAA Division I Academic Top 25 Continued from page 22

Cleveland State University, Chris Kielsmeier, 3.459
University of Alabama at Birmingham, Randy Norton, 3.458
Western Michigan University, Shane Clipfell, 3.450
Indiana State University, Chad Killinger, 3.448
Fresno State University, Jaime White, 3.418
University of Wyoming, Heather Ezell, 3.417
University of Iowa, Lisa Bluder, 3.416
University of St. Thomas, Ruth Sinn, 3.415
Oregon State University, Scott Rueck, 3.414
Grand Canyon University, Molly Miller, 3.411
University of Kansas, Brandon Schneider, 3.409
University of the Incarnate Word, Jeff Dow, 3.400
University of Illinois Chicago, Ashleen Bracey, 3.396
Binghamton University, Bethann Ord, 3.394
California State University, Northridge, Carlene Mitchell, 3.394
Valparaiso University, Mary Evans, 3.389
University of Alabama, Kristy Curry, 3.379
American University, Tiffany Coll, 3.375
DePaul University, Douglas Bruno, 3.372
Arizona State University, Natasha Adair, 3.367
University of Colorado, JR Payne, 3.358
Washington State University, Kamie Ethridge, 3.356
Saint Joseph's University, Cindy Griffin, 3.348
Oklahoma State University, Jacie Hoyt, 3.332
University of Notre Dame, Niele Ivey, 3.331
University of Arizona, Adia Barnes, 3.331
Portland State University, Chelsey Gregg, 3.331
Western Carolina University, Kiley Hill, 3.318
Rice University, Lindsay Edmonds, 3.316
Kansas State University, Jeff Mittie, 3.297

Louisiana Tech University, Brooke Stoehr, 3.285
Liberty University, Carey Green, 3.280
La Salle University, Mountain MacGillivray, 3.277
University of Minnesota, Lindsay Whalen, 3.275
Fairfield University, Carly Thibault, 3.271
University of Kentucky, Cami Moore, 3.267
UCLA, Cori Close, 3.263
UC Santa Barbara, Bonnie Henrickson, 3.261
University of Southern California, Lindsay Gottlieb, 3.250
University of Evansville, Robyn Scherr-Wells, 3.241
Sacred Heart University, Jessica Mannetti, 3.237
Niagara University, Jada Pierce, 3.217
University of San Diego, Cindy Fisher, 3.214
UNLV, Lindy La Rocque, 3.206
Georgia State University, Gene Hill, 3.204
California State University Bakersfield, Greg McCall, 3.199
University of California, Berkeley, Charmin Smith, 3.182
University of Tulsa, Angie Nelp, 3.181
Longwood University, Erika Lang-Montgomery, 3.179
Hofstra University, Danielle Santos Atkinson, 3.163
Eastern Washington University, Joddie Gleason, 3.147
University of Central Florida, Sytia Messer, 3.134
University of Mississippi, Yolett McPhee-McCuin, 3.132
Seton Hall University, Anthony Bozzella, 3.127
Ohio State University, Kevin McGuff, 3.099
Florida State University, Brooke Wyckoff, 3.090
Brigham Young University, Amber Whiting, 3.077
University of Tennessee, Kellie Harper, 3.048
University of Virginia, Amaka Agugua-Hamilton, 3.041
Texas Tech University, Krista Gerlich, 3.021

NCAA Division II Academic Top 25 Continued from page 25

Seton Hill University, Mark Katarski, 3.577
Winona State University, Ana Wurtz, 3.568
Adelphi University, Sade Jackson, 3.563
Columbus State University, Matt Houser, 3.552
West Liberty University, Kyle Cooper, 3.547
Florida Southern College, Megan Dzikas, 3.547
Harding University, Tim Kirby, 3.520
Northwest Nazarene University, Steve Steele, 3.518
Southern New Hampshire University, Karen Pinkos, 3.516
D'Youville University, Alison Bouman, 3.502
University of Hawaii at Hilo, David Kaneshiro, 3.484
Western Washington University, Carmen Dolfo, 3.455
Biola University, Alan Nakamura, 3.454
Gannon University, Cleve Wright, 3.437
Carson-Newman University, Michael Mincey, 3.432

West Chester University, Kiera Wooden, 3.393
Coker University, Melissa DeVore, 3.383
Davenport University, Shonda Sanders, 3.375
Union University, Mark Campbell, 3.360
Bentley University, Carolyn White, 3.359
California State University Monterey Bay, Sarah Hopkins-Chery, 3.340
Azusa Pacific University, T.J. Hardeman, 3.315
Assumption University, Kerry Phayre, 3.298
Chowan University, Lenise Stallings, 3.273
California State University, Dominguez Hills, John Bonner, 3.224
University of West Florida, Stephanie Yelton, 3.215
California State University, Los Angeles, Torino Johnson, 3.129
California State University, San Bernardino, Casandra Renno, 3.108
University of North Carolina at Pembroke, John Haskins, 3.077
Converse University, Samantha Davidson, 3.065

RECOGNITION

NCAA Division III Academic Top 25 **Continued from page 28**

Carthage College, Megan Jones, 3.598
Marymount University, Margaret White, 3.596
Emory University, Misha Jackson, 3.595
St Catherine University, Donald Mulhern, 3.595
University of Wisconsin-Oshkosh, Brad Fischer, 3.594
Catholic University, Matt Donohue, 3.591
Yeshiva University, Bill Zatulskis, 3.588
Moravian University, Mary Beth Spirk, 3.586
Calvin University, Mark Christner, 3.583
Emmanuel College (MA), Andy Yosinoff, 3.579
Illinois Wesleyan University, Mia Smith, 3.571
College of St. Scholastica, Jason Schmitz, 3.571
Claremont-Mudd-Scripps Colleges, Chanel Murchison, 3.562
Hope College, Brian Morehouse, 3.559
King's College, Caitlin Hadzimichalis, 3.551
Tufts University, Jill Pace, 3.543
University of Dubuque, Justin Smith, 3.541
University of Scranton, Ben O'Brien, 3.534
Haverford College, Grace Elliott, 3.526
SUNY New Paltz, James Seward, 3.516
University of Mount Union, Suzanne Venet Pietz, 3.516
DeSales University, Fred Richter, 3.514
Albion College, Doreen Carden, 3.511
Marietta College, Kole Vivian, 3.507
Westminster College, Rosanne Scott, 3.504
St. Norbert College, Amanda Perry, 3.504
St. Olaf College, Kelly Mahlum, 3.503
Illinois Institute of Technology, Carissa Sain, 3.501
Ripon College, Lauren Busalacchi, 3.501
Hardin-Simmons University, Kendra Whitehead, 3.500
Russell Sage College, Allison Coleman, 3.500
Dickinson College, Aby Diop, 3.498

Illinois College, Jennifer McCormick, 3.489
Kalamazoo College, Katie Miller, 3.478
Denison University, Maureen Hirt, 3.474
Kenyon College, Mary Corbett, 3.473
Sarah Lawrence College, Bradley Alexander, 3.470
York College (PA), Betsy Witman, 3.468
Chapman University, Carol Jue, 3.467
Edgewood College, Chaia Huff, 3.462
Central College, Moran Lonning, 3.456
University of Minnesota, Morris, Tim Grove, 3.447
William Paterson University, Erin Monahan, 3.440
Susquehanna University, Gabrielle Holko, 3.411
Otterbein University, Diana Noles, 3.408
Suffolk University, Ed Leyden, 3.407
Christopher Newport University, Bill Broderick, 3.394
Kean University, Mandy King, 3.391
Worcester State University, Karen Tessmer, 3.383
Willamette University, Peg Swadener, 3.365
Arcadia University, Jackie Hartzell, 3.349
Roger Williams University, Kelly Thompson, 3.347
Swarthmore College, Dawn Grant, 3.329
Western Connecticut State University, Kimberley Rybczyk, 3.328
Anderson University, Jon Gin, 3.328
Saint Mary's College (IN), Melissa Makielski, 3.327
Penn College, Britni Mohny, 3.316
Franklin & Marshall College, Brianna Spector, 3.310
University of Mary Washington, Deena Applebury, 3.308
Gallaudet University, Stephanie Stevens, 3.307
Fredonia State University, Sarah Cartmill, 3.304
Capital University, Camille McPherson, 3.291
University of Lynchburg, Allison Nichols, 3.238
McDaniel College, Christin Gowan, 3.228
St. Mary's College of Maryland, Brittney Kenney, 3.220
Gettysburg College, Nate Davis, 3.172





Women's Basketball Coaches Association
4646 Lawrenceville Highway | Lilburn, GA 30047
770-279-8027 | membership@wbca.org | www.WBCA.org