



WOMEN'S BASKETBALL
COACHES ASSOCIATION

ANNUAL REPORT

2021-22



INTRODUCTION

The WBCA's first logo, introduced shortly after its founding in 1981, was a simple orange and black hand-drawn basketball with the organization's initials stenciled over it.

Table of contents

INTRODUCTION

2

Table of contents.....	3
To our members.....	4

THE ASSOCIATION

5

Who We Are (mission, vision, values, objectives, ethics).....	6
History.....	7
Leadership (board of directors, staff, organizational structure).....	11
Our Members.....	13
Our Finances.....	14

PROGRAMS & SERVICES

15

Convention.....	16
Connections.....	17
Diversity, equity and civic engagement.....	18
Social Media.....	19

RECOGNITION

20

Contributor honors.....	21
Association-wide honors.....	23
NCAA Division I honors.....	24
NCAA Division II honors.....	27
NCAA Division III honors.....	29
NAIA honors.....	32
Two-year college honors.....	34
High school honors.....	35



To our members

Dear member,

It is our pleasure to present you with this annual report for the 2021-22 association year. The report summarizes the association's status and activities from Sept. 1, 2021, through Aug. 31, 2022.

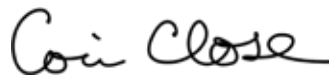
The WBCA has weathered the first global pandemic in a century. We are proud of our member coaches who persevered and exerted incredible effort to lead their teams during this most difficult time. Thank you for being you — for being a coach. We thank the members of the WBCA Board of Directors for their support as we all worked together to keep the association afloat and moving forward. We commend our staff which continues to provide outstanding service to WBCA members despite being significantly downsized. Finally, we thank Tricia Cullop, our pandemic president, for her tremendous leadership throughout the pandemic and for being an outstanding representative of coaches of women's basketball. We are forever grateful to Tricia for her leadership, wise counsel and support.

Sept. 1, 2021, was the WBCA's 40th anniversary. Our plans to commemorate the association's 40th year, however, were overshadowed by the effects of Covid-19. Despite the pandemic, we did have plenty to celebrate. We resumed the in-person WBCA Convention in Minneapolis, Minnesota, and 2,142 of you attended — more than double our projection. We entered into a new major partnership with Invesco QQQ as the title sponsor of the Invesco QQQ WBCA Coaches' Trophy. NCAA women's basketball can now use the March Madness brand. The NCAA Division I Women's Basketball Championship field expanded from 64 to 68 teams. Finally, we announced an exciting new joint venture with the NABC — Coaches+ — which in time will enable us to tell the exciting and inspiring stories of coaches and coaching unlike ever before and, hopefully, become an entirely new source of revenue that will help fund the WBCA in the future.

Our association, our profession and our sport have emerged from COVID-19 with a brighter, more promising future full of new opportunities. Attendance is up. Television viewership is up. Our game is stronger than ever and perfectly positioned to continue its upward trend. Thanks in no small part to the WBCA's Our Fair Shot gender equity initiative, everyone acknowledges that women's basketball is not just valuable, but incredibly valuable. Now it is time to leverage this market value and take our game to the next level!

We, as an association and a sport, have had an amazing 40 years. As to the next 40... the best is yet to come.

Best wishes to you all!



Cori Close
President



Danielle M. Donehew
Executive Director



Cori Close



Danielle Donehew





THE ASSOCIATION

The second WBCA logo debuted in 1991. Because of its overall shape, the logo came to be affectionately nicknamed “the tombstone.”

Who we are

Our mission, vision, values and objectives define who we are and aspire to be, why we exist, what we believe, and what we do. Our code of ethics establishes standards of conduct and our expectations of each other and ourselves.

OUR MISSION

The WBCA leads, serves and unites coaches of women's basketball for the good of our game and those who play it.



OUR VISION

Every coach of women's basketball looks to the WBCA for the support they need to succeed professionally, grow the game, and inspire players to realize their full potential.



OUR VALUES

Member coaches are stewards of the game, conducting themselves with professionalism and integrity, and putting foremost the safety, welfare and educational interests of the women and girls they coach. The WBCA membership, board of directors and staff conduct themselves in such a manner that the women and girls who play basketball gain self-respect, self-esteem and self-confidence, as well as educational development. These qualities empower women and girls to succeed in life and to become leaders in their professions, communities and society.



OUR OBJECTIVES

- We follow both the letter and spirit of the rules and regulations that govern our sport.
- We inform, advise and guide coaches on matters that impact their profession and their sport.
- We offer networking opportunities that allow coaches to connect, encourage and mentor each other.
- We provide educational programming that enables coaches to make themselves better leaders, teachers and role models for the athletes they coach, and improve the quality and popularity of the game.
- We recognize coaches, as well as their athletes and their teams, who excel athletically and academically each year, and honor those who have made lasting contributions to the profession and sport throughout their career.
- We act as the unifying voice of coaches to the organizations that govern the sport at its various levels of competition.



OUR CODE OF ETHICS

Members conduct themselves professionally, according to the rules, and with civility to players, administrators, game officials, fans and each other. All members must adhere to these ethical and behavioral standards.

Integrity

- We follow both the letter and spirit of the rules and regulations that govern our sport.
- We watch for actions that could influence other coaches, staff members, athletes and fans to behave in a way that is contrary to these standards.
- We report conduct or suspected conduct that is not in keeping with these standards as well as the rules and regulations that govern our sport.
- We acknowledge that winning is important, but never at the expense of sportsmanship, safety and integrity.

Athlete experience

- We place the physical and mental well-being of the women and girls who play basketball above all else; their health and safety is paramount.
- We maintain strictly professional relationships with the athletes with whom we interact.
- We respect the dignity and individuality of each person with whom we interact and promote

a diverse and inclusive culture in which every individual is valued.

Education and empowerment

- We teach by example and instill in our athletes the fundamental values of honesty, integrity, respect, civility, self-discipline, personal responsibility and fairness.
- We educate women and girls in a manner that prepares them to succeed in life and become leaders in their communities.
- We strive in all we do to expand athlete experiences and support their academic and educational interests.

Professionalism

- We perform with excellence and good sportsmanship and require the same of each other and our athletes.
- We commit to growing and enhancing the sport of women's basketball and seek opportunities to grow personally and professionally.
- We respect the game, fellow coaches, administrators, game officials and the women and girls we coach and teach.
- We conduct ourselves according to the WBCA values and standards and are accountable for our decisions and actions.



History

The WBCA celebrated its 40th anniversary on Sept. 1, 2021, and commemorated its 40-year history throughout the 2021-22 association year.

THE 1980s (1981–1990)

1981

- On July 25, a small group of college women's basketball coaches meet at the U.S. Olympic Festival in Syracuse, New York, and agree to develop a professional association.
- On Sept. 1, coaches meet again outside Philadelphia, Pennsylvania, and establish the WBCA. James Madison University head coach Betty Jaynes is appointed interim executive director.
- In October, the WBCA introduces its first logo and first publication, *Backboard Bulletin*.
- 212 coaches become members in the WBCA's first year.

1982

- The WBCA names its first All-America teams in two divisions — university and collegiate.
- The WBCA holds its first convention in Virginia Beach, Virginia, in conjunction with the inaugural NCAA Women's Final Four in nearby Norfolk, Virginia. The 99 members who attend adopt bylaws, elect a board of directors, and elect Illinois State University head coach Jill Hutchison as president.
- Jaynes resigns as head coach at James Madison, becomes WBCA executive director full time, and opens the WBCA's first office in Philadelphia.

1983

- The WBCA assumes responsibility for Kodak All-America selections and names teams in NCAA Division I, NCAA Division II/NAIA combined, NCAA Division III, and two-year college.
- The WBCA and Converse name the first Converse/WBCA Coaches of the Year.
- The WBCA and Champion name the first Champion Players of the Year.

1984

- The WBCA presents the first Jostens-Berenson Service Award (now the Jostens-Berenson Lifetime Achievement Award) to former Delta State University head coach Margaret Wade.



Jill Hutchison



Betty Jaynes

1985

- The WBCA selects separate Kodak All-America teams in NCAA Division II and NAIA.
- The WBCA recognizes Joan Cronan, women's athletics director at the University of Tennessee, with its first Administrator of the Year award.
- WBCA membership exceeds 1,500.

1986

- WBCA adds high school and assistant coach representatives to its board of directors.
- WBCA presents Bridgewater College head coach Laura Mapp with the first Carol Eckman Award (now the Carol Eckman Integrity in Coaching Award).
- The WBCA holds its fifth convention in Lexington, Kentucky. Attendance grows to more than 700.
- The WBCA office moves from Philadelphia to Atlanta, Georgia.

1987

- The WBCA publishes its first issue of *Coaching Women's Basketball* magazine.
- Teresa Edwards, four-time Olympic gold medalist and former University of Georgia standout, becomes the WBCA's first intern.

1990

- WBCA brings national attention to the University of Oklahoma's decision to discontinue its women's basketball program. Within one week, Oklahoma reinstates the program.
- WBCA purchases and subsequently relocates to its current office building in Lilburn, Georgia, a suburb of Atlanta.



History (cont'd)

The WBCA celebrated its 40th anniversary on Sept. 1, 2021, and commemorated its 40-year history throughout the 2021-22 association year.

THE 1990s (1991–2000)

1991

- The WBCA unveils its second logo.
- Association membership exceeds 3,000.

1992

- Vanderbilt University head coach Jim Foster becomes the first male elected WBCA president.
- Representatives of the Black Coaches Association and male coaches are added to the board of directors.
- More than 1,600 attend the association's 10th convention in Los Angeles, California.
- The first WBCA High School All-America Game is played.

1993

- The association changes its fiscal year from July 1–June 30 to September 1–August 31.

1994

- Three legislative positions and a Committee on Basketball Issues position are added to the board of directors.
- Sears and the WBCA present the first Sears Trophy to national champion University of North Carolina.
- USA TODAY and the WBCA begin the USA TODAY Top 25 Coaches' Poll in NCAA Division I.

1995

- USA TODAY and the WBCA begin the USA TODAY Top 25 Coaches' Poll in NCAA Division II.

1996

- Divisional representatives replace geographic representatives on the board of directors.
- Executive Director Betty Jaynes' title is changed to chief executive officer (CEO).
- USA TODAY and the WBCA begin the USA TODAY Top 25 Coaches' Poll in NCAA Division III.



Jim Foster

1997

- The WBCA names Beth Bass as executive director. She works beside Jaynes running the association.

1998

- The WBCA establishes an event management department.
- The first WBCA All-Star Challenge Game is held.
- The WBCA introduces its third logo.
- The term of the WBCA president changes from one year to two. Mills College head coach Carol Alfano becomes the first president to serve a two-year term.
- The WBCA renovates its Lilburn, Georgia, office.

2000

- The WBCA and the National Association for Girls and Women in Sport (NAGWS) form the Wade Coalition. The WBCA discontinues its NCAA Division I Player of the Year award and presents the Wade Trophy to the top Division I player instead.
- Betty Jaynes announces her retirement as CEO. She continues to serve as WBCA consultant until her death.
- The WBCA establishes the conference captains program.



Carol Alfano



History (cont'd)

The WBCA celebrated its 40th anniversary on Sept. 1, 2021, and commemorated its 40-year history throughout the 2021-22 association year.

THE 2000s (2001–2010)

2001

- The WBCA Internship Program is renamed the Betty F. Jaynes Internship Program in honor of retired CEO Betty F. Jaynes.
- In August, the WBCA soft launches its first website — WBCA.org.
- Beth Bass is named chief executive officer of the WBCA on November 1.



Beth Bass

2002

- In March, the WBCA officially launches its first website.
- Sears ends its Collegiate Champions Program in all sports. The WBCA continues awarding the Coaches' Trophy to the top-ranked NCAA Division I team in the final USA TODAY Top 25 Coaches' Poll.

2003

- The WBCA launches the "So You Want To Be A Coach" program, which becomes the association's longest continuous education program.

2005

- Four at-large NCAA Division I representatives are added to the board of directors.

2006

- The WBCA hosts its last All-Star Challenge, the collegiate all-star matchup, as a part of the Night of All-Stars.

2007

- The WBCA begins the WBCA Pink Zone initiative — a global campaign to raise awareness of breast cancer in women's basketball, on campuses and in communities.
- The WBCA launches the first national women's basketball podcast, *Shootaround with Beth & Debbie*, hosted by Beth Mowins and Debbie Antonelli.
- The WBCA, in partnership with North Carolina State University head coach Kay Yow and The V Foundation, announces the launch of the Kay Yow/WBCA Cancer Fund. The WBCA adopts the Fund as its first-ever charity of choice.

2008

- The WBCA adds a Conference Commissioners Association representative to the board of directors.

2009

- The WBCA relaunches *Coaching Women's Basketball* magazine.
- The WBCA launches *Fast Break*, the WBCA's new and improved e-newsletter.
- The WBCA begins using social media to reach coaches and fans of women's basketball.
- The WBCA revamps the *Compliance Corner* newsletter for NCAA Division I and implements a new high school legislative newsletter titled *Compliance Now*.

2010

- The WBCA establishes an ethics committee for women's basketball.
- WBCA.org is reinvented, creating a one-stop shop for women's basketball coaches and fans looking to gain education, networking opportunities, the latest women's basketball news, career development and much more.
- The Kay Yow/WBCA Cancer Fund becomes the Kay Yow Cancer Fund and relocates its headquarters to Cary, North Carolina. The WBCA transfers management of the WBCA Pink Zone initiative to the Kay Yow Cancer Fund staff, which subsequently rebrands the initiative as "Play4Kay" and expands its focus to include all cancers affecting women.



History (cont'd)

The WBCA celebrated its 40th anniversary on Sept. 1, 2021, and commemorated its 40-year history throughout the 2021-22 association year.

THE 2010s (2011–2022)

2011

- The WBCA tweaks its logo to a darker, richer blue and red.

2013

- The WBCA adopts its first strategic plan, a blueprint for 2014 through 2018.
- In May, the WBCA publishes the final issue of *Coaching Women's Basketball* magazine.

2014

- Betty Jaynes passes away on Feb. 10.
- Beth Bass steps down as CEO on April 16.
- Danielle Donehew is named the WBCA's third executive director on July 2.

2015

- Penn State University head coach Coquese Washington becomes the association's first Black president.
- The WBCA membership adopts a comprehensive revision to association bylaws, which downsizes the board of directors and reconstitutes the executive committee.

2016

- The WBCA acquires full ownership of the Wade Trophy.
- A year-long branding study culminates with the launch of a new website and the unveiling of a new logo – the fourth in the WBCA's history.
- The Champion statuette is presented to all WBCA award recipients for the first time.
- The WBCA forms a Diversity and Inclusion Committee.
- The WBCA recognizes its first Assistant Coaches of the Year and names its first Thirty Under 30 to honor up-and-coming coaches aged 30 and under at all levels of the game.



Danielle Donehew



Coquese Washington



2017

- The Naismith Memorial Basketball of Fame and WBCA partner to establish the Naismith Starting 5 position player of the year awards.

2018

- The WBCA adopts its second strategic plan — a three-year roadmap for leading the association through 2021.
- The WBCA board adopts a simplified code of ethics that defines the values and behavioral standards to which member coaches are expected to adhere.
- The WBCA establishes a Benevolent Fund to assist member coaches who experience undue financial hardship.

2020

- The WBCA cancels its 2020 WBCA Convention because of the COVID-19 pandemic. It marks the first year since the association's founding that a convention is not held.
- The WBCA closes its office and staff begins working remotely as a health precaution due to the COVID-19 pandemic.

2021

- The 2021 WBCA Convention is canceled due to the ongoing COVID-19 pandemic.
- The WBCA launches the "Our Fair Shot" initiative to push for gender equity in basketball.
- Staff returns to work in the WBCA office in October after 20 months of working remotely due to the COVID-19 pandemic.

2022

- Title sponsorship of the WBCA Coaches' Trophy is sold to Invesco QQQ.
- The WBCA Convention resumes in Minneapolis, Minnesota.
- Danielle Donehew announces a partnership with Chicago-based TeamWorks Media and the NABC to launch Coaches+, a new media company that will develop and produce premium content and intellectual property centered around coaches.



Leadership

The association is governed by a board of directors composed of 25 voting members, the executive director, and a number of consultants to the board who represent strategic partners or have expertise of importance to the profession and the sport.

2021-22 WBCA BOARD OF DIRECTORS



Courtney Banghart
Head Coach, North Carolina
Vice President



Carol Callan*
FIBA Americas



Jackie Carson*
Head Coach, Furman



Cori Close
Head Coach, UCLA
President



Tricia Cullop
Head Coach, Toledo
Past President



Danielle Donehew*
Executive Director
Secretary



Julie Eddleman
DoubleVerify



Michelle Edwards
Assistant Coach, Central Florida



Rich Ensor
Commissioner, MAAC



Jose Fernandez
Head Coach, South Florida



Nels Hawkinson
BTI



Gene Hill
Head Coach, Georgia State



Lynn Holzman*
Vice President, NCAA



Debbie Spander
Insight Sports Advisors



Romeo Lagmay
Head Coach, Dawson CC



Lacey Lewis
Cox Enterprises
Treasurer



Jason Martens
Head Coach, St. Mary's, TX



Brian Morehouse
Head Coach, Hope



Chris Nelson
Head Coach, Bethel (TN)



Binh Nguyen*
AMA Staff, NCAA



Beth O'Boyle
Head Coach, VCU



Raegan Pebley
Head Coach, Texas Christian



Meagan Price
Head Coach, Tusculum



Martha Putallaz*
Professor, Duke



Charmin Smith
Head Coach, California



Jenn Strawley
Deputy Dir. Athletics, Miami



Joni Taylor
Head Coach, Texas A&M



Polly Thomason
Head Coach, Hartford



Jess Turner
Head Coach, Skidmore



Teresa Waters
Head Coach, River Hill (MD) HS



Stephanie Yelton
Head Coach, West Florida

*-Nonvoting member



Leadership (cont'd)

The board of directors employs an executive director to manage the day-to-day affairs of the association. The executive director in turn employs a staff to assist with the management of the organization's programs and initiatives.

WBCA STAFF



Danielle Donehew
Executive Director
ddonehew@wbca.org
770-279-8027 ext. 122



Mary Ellen Gillespie
Deputy Director
meg@wbca.org
770-279-8027 ext. 118



Dana Reffling
Executive Assistant
dreffling@wbca.org
770-279-8027 ext. 122



Latasha Lewis
Manager of Marketing
Communications
llewis@wbca.org
770-279-8027 ext. 105



Daniella Trujillo
Senior Manager
of Events & Awards
dtrujillo@wbca.org
770-279-8027 ext. 110



Jack Watford
Director of
Communications
jwatford@wbca.org
770-279-8027 ext. 112



Shayla Black
Manager of Membership
Associations International
sblack@wbca.org
770-279-8027 Prompt 2



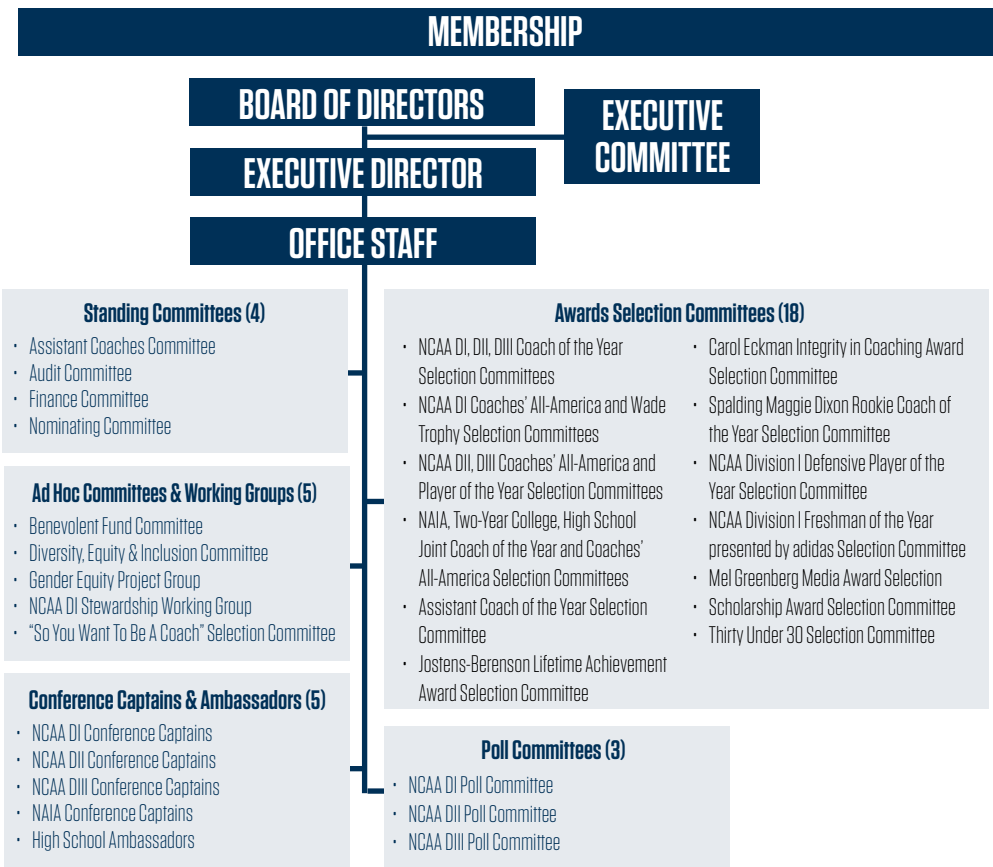
Abby Davis
Events Manager
Associations International
adavis@wbca.org
859-207-3918



Marcellus Barksdale
Senior Manager
Learfield
marcellus.barksdale@learfield.com

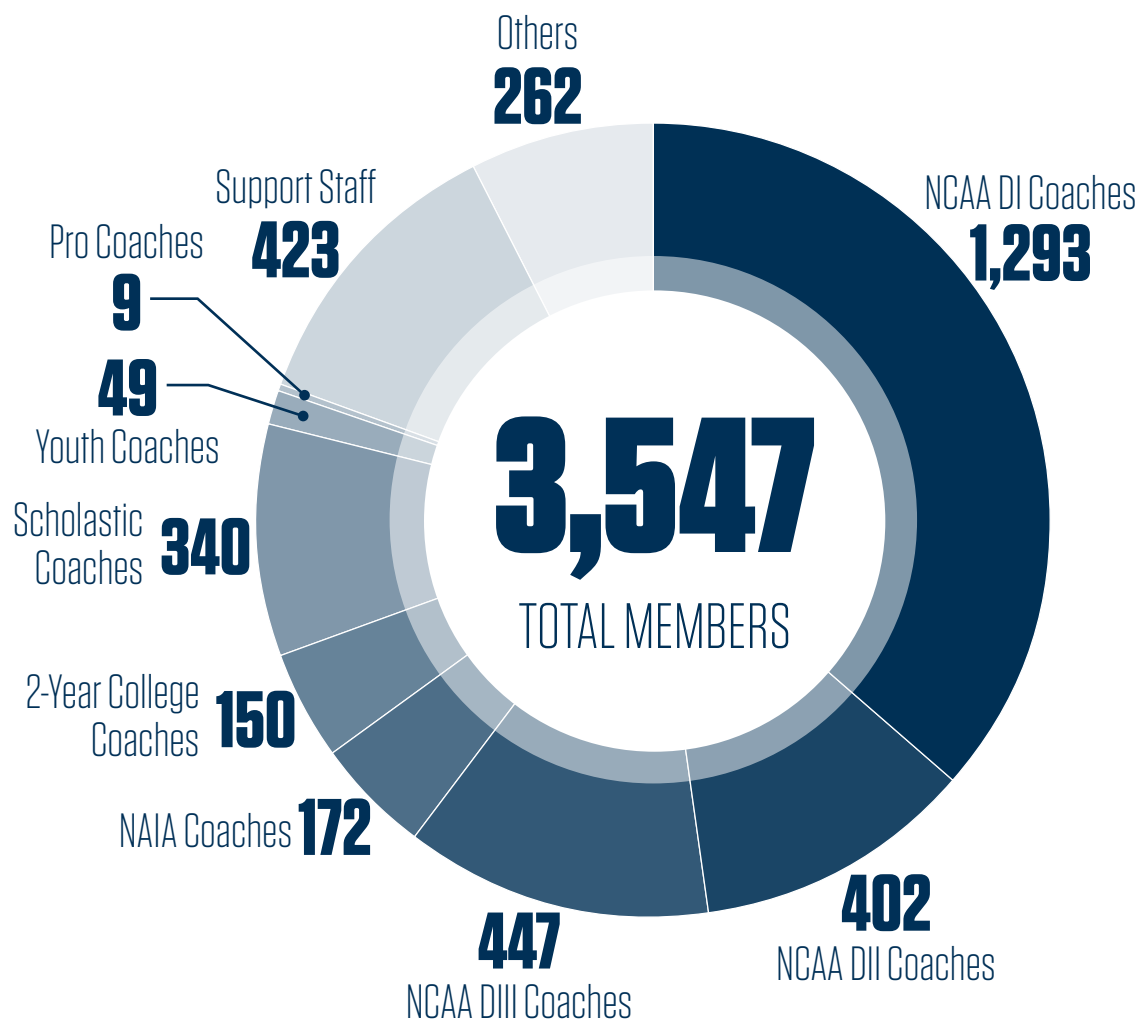


ORGANIZATIONAL STRUCTURE



Membership

WBCA membership slowly began its post-pandemic recovery during the 2021-22 association year, increasing to 3,547 — 9 percent over the 10-year low of 3,243 members enrolled the previous year.



MEMBERSHIP OVER THE LAST 10 YEARS

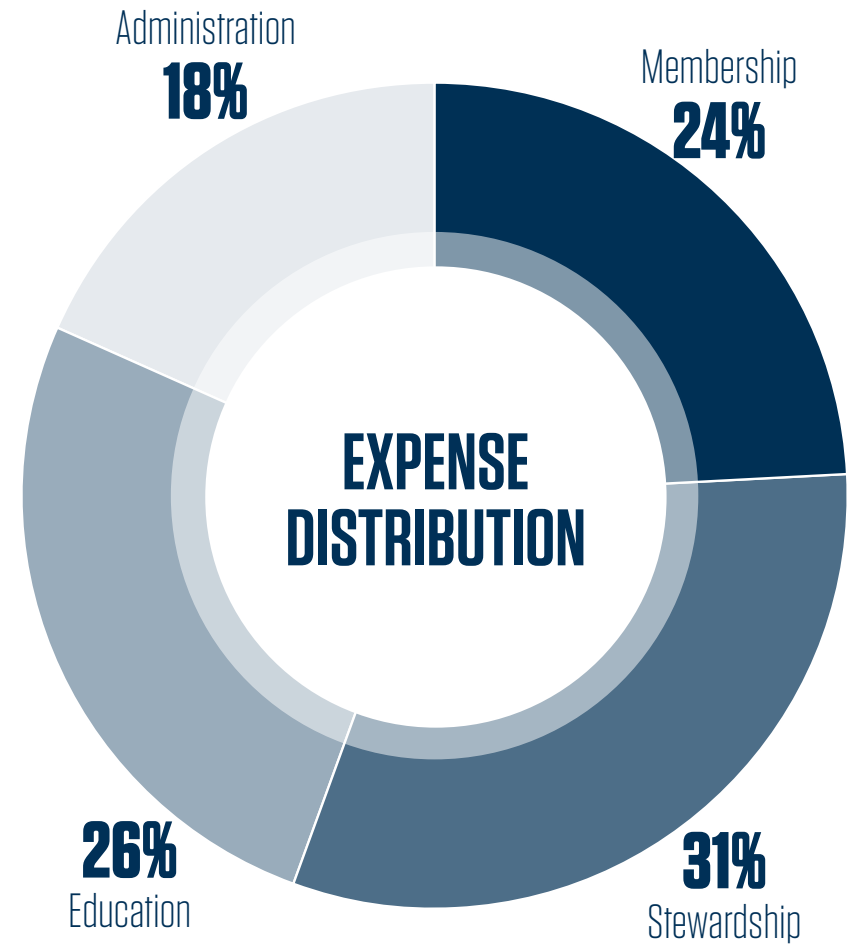
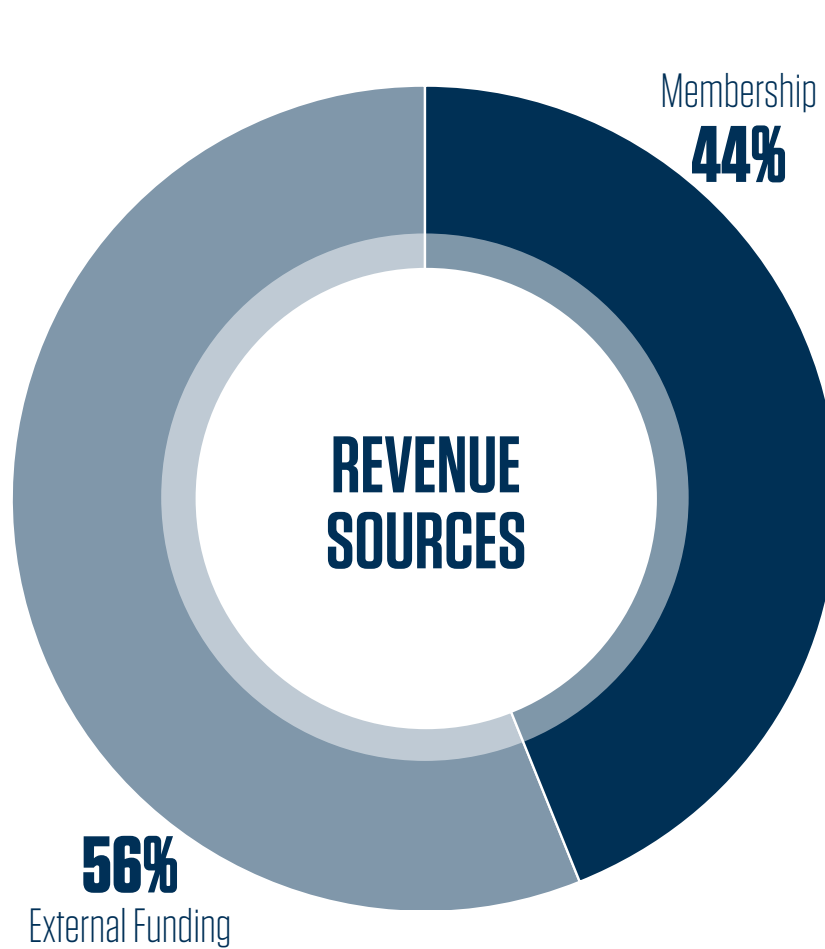
Year	Membership
2021-22	3,547
2020-21	3,243
2019-20	4,252
2018-19	4,613
2017-18	4,273
2016-17	4,226
2015-16	3,957
2014-15	3,977
2013-14	3,912
2012-13	4,012

NOTE: Coaches include directors of basketball operations. Scholastic coaches include high school, junior high school, middle school and elementary school. Youth coaches include AAU and club. Support staff includes ADs, SWAs, videographers, grad assistants, managers, etc. Others includes international, inactive, retired coaches; business, strategic partners; athletes, fans, media, etc.).



Finances

With revenues generated by the resumption of convention and an uptick in memberships, the WBCA was less dependent than in the year prior on external funding to balance its \$3.04 million budget during the 2021-22 association year.





PROGRAMS & SERVICES

The third WBCA logo was unveiled in 1998. It introduced the Champion pictogram — an abstract silhouette of a female athlete lifting a basketball in triumph — utilized a modern art deco font, and recognized the founding of the WBCA in 1981.

Convention

After back-to-back cancellations in 2020 and 2021 due to the Covid-19 pandemic, the WBCA Convention was held in conjunction with the 2022 NCAA Women's Final Four in Minneapolis. A total of 2,142 persons — more than double the projection — attended the four-day event.

WE MEET AGAIN ... AT LAST



ATTENDANCE OVER THE LAST 10 CONVENTIONS

Year	Attendance	Location
2022	2,142	Minneapolis
2021	---	<i>Canceled</i>
2020	---	<i>Canceled</i>
2019	2,927	Tampa
2018	2,357	Columbus
2017	2,475	Dallas
2016	2,197	Indianapolis
2015	2,124	Tampa
2014	2,383	Nashville
2013	2,291	New Orleans
2012	2,181	Denver
2011	2,064	Indianapolis



Connections

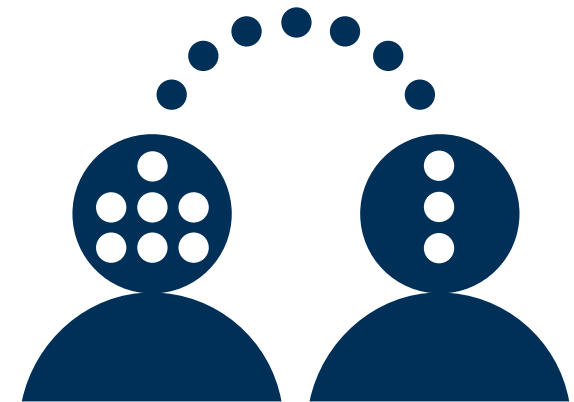
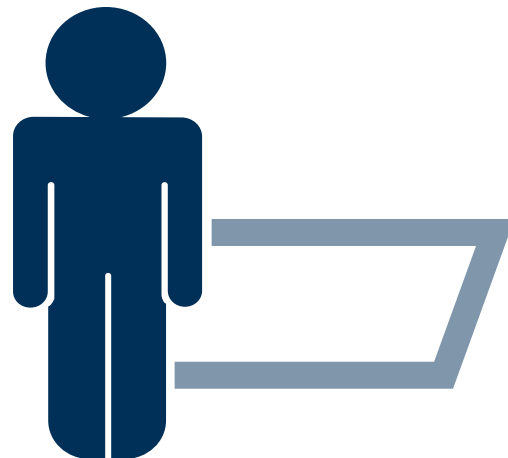
In addition to the in-person convention, the WBCA continues to connect members with one another through virtual programs such as the Coach to Coach Mentoring Program and Beyond the Box peer-to-peer program.

Coach to Coach Mentoring Program

Launched during the 2015-16 membership year, the Coach to Coach Mentoring Program is a traditional, small group mentoring program designed to bring coaches and staffs together during the basketball season to share ideas, confront challenges and learn from each other's experiences. The program provides a structured platform — monthly conference calls — for organic, open conversation between experienced coaches (who serve as mentors) and those who have recently began their coaching journeys (mentees).

2021-22 Association Year

- Huddles: 29
- Mentors: 35
- Mentees: 97
- Total participants: 132



Beyond the Box peer-to-peer program

The WBCA launched the new Beyond the Box peer-to-peer program during the 2019-20 membership year for the benefit of seasoned coaches with three or more years of experience in their current roles. Coaches are paired with others at the same level (e.g., head coach with other head coaches, assistant coach with other assistant coaches, etc.) to connect and discuss things such as difficult situations, personal interest topics, coaching journeys and X's & O's.

2021-22 Association Year

- Huddles: 30
- Facilitators: 30
- Mentees: 92
- Total participants: 122

Diversity, equity & civic engagement

The WBCA continued to provide leadership in women's and girls' basketball in the areas of gender equity, diversity and inclusion, and civic engagement.



The WBCA entered into a partnership with RISE, a national nonprofit organization that educates and empowers the sports community to eliminate racial discrimination, champion social justice and improve race relations. RISE will provide WBCA members with in-person educational programming during the WBCA Convention as well as online programming throughout the year focused on diversity, equity and inclusion.

The WBCA joined with the NABC and the ALL IN Campus Democracy Challenge, which empowers colleges and universities to achieve excellence in nonpartisan student democratic engagement, to promote the Coaches' Voter Engagement Pledge, a joint effort to recruit 1,500 college coaches committed to increasing nonpartisan voter registration and turnout among student-athletes.



**CAMPUS
DEMOCRACY
CHALLENGE**



THE
SUPREME COURT

The WBCA and the NABC jointly submitted to the Supreme Court of the United States an amicus brief in support of affirmative action in the college admissions process in two cases — *Students for Fair Admissions Inc. v. President & Fellows of Harvard College* and *Students for Fair Admissions Inc. v. University of North Carolina*.

The WBCA continued to advance gender equity in college basketball through its *Our Fair Shot* initiative. The accomplishments of the 2021-22 association year included:

- For the first time, NCAA college women's basketball, was permitted to use the MARCH MADNESS brand in promoting its championships.
- Branding and signage for the women's championship was enhanced during all rounds of the championship.
- The NCAA Division I Women's Basketball Championship field was expanded from 64 to 68 teams.
- Student-athletes at both women's and men's championships were provided equitable experiences (facilities, food, gift bags, etc.).
- Game officials at the women's championship received the same pay as those officiating the men's championship.
- The NCAA women's basketball staff was expanded and additional support for the championships was provided through third-party contractors.



Social media

The WBCA gained followers on Instagram, Linked In and Twitter. However, total impressions and engagement on social media platforms fell.

3,494,390
TOTAL IMPRESSIONS IN 2021-22
 (down 55.8% from previous year)

37,987 TOTAL AUDIENCE (up 10%) **78,610 TOTAL ENGAGEMENTS** (down 62.1%)



FACEBOOK

5,326 followers **3,870** engagements
132 page likes **79,419** impressions



INSTAGRAM

4,446 followers **3,608** engagements
3,493 likes on posts **111,687** impressions



LINKED IN

406 engagements **6,851** impressions



TWITTER

26,680 followers **70,726** engagements
9,012 likes on tweets **1,976** retweets
3,296,433 impressions





RECOGNITION

The fourth and current WBCA logo was introduced in 2016. It features the association's initials in a custom italicized font that reflects forward motion, a vibrant orange basketball that evokes excitement, and a shadow that illustrates the organization is on the rise.

Contributor honors

JOSTENS-BERENSON LIFETIME ACHIEVEMENT AWARD



CAROL CALLAN
USA BASKETBALL/FIBA AMERICAS

Carol is a highly respected global leader in women's and girls' basketball who commands the admiration, trust and respect of coaches at all levels of the sport. Her vision and influence led to USA Basketball's dominance in global women's basketball competition throughout her career. Now, as president of FIBA Americas, Carol remains an important international leader in our sport.

The WBCA salutes Carol for her lifetime of contributions to the game and for her many years of service as a member of the WBCA Board of Directors. She is truly worthy of our association's highest honor.

— Danielle Donehew, executive director, WBCA



Contributor honors (cont'd)

ADMINISTRATOR OF THE YEAR



KATHY MEEHAN
ST. JOHN'S

PRESIDENT'S AWARD



TRICIA CULLOP
TOLEDO

MEL GREENBERG MEDIA AWARD



HOLLY ROWE
ESPN



CHARLES HALLMAN
MINNESOTA SPOKESMAN-RECORDER



Association-wide honors

THIRTY UNDER 30

Gillian Abshire, assistant coach, La Salle
 Elizabeth Andrews, head coach, John Carroll
 Kaleigh Badecki, assistant coach, Gettysburg
 Kevi Boykin, assistant coach, Rice
 Ariel Braker, assistant coach, South Dakota
 Mariyah Brawner-Henley, assistant coach, Illinois State
 Amy Briggs, assistant coach, Truman State
 Camryn Brown, assistant coach, West Virginia State
 Jill Conroy, associate head coach, Stevens
 Kaitlyn Cresencia, assistant coach, Quinnipiac

Symone Denham, assistant coach, New Mexico
 Jillian Dunston, assistant coach, Drexel
 Danielle Edwards, assistant coach, SMU
 Jen Fay, assistant coach, Quinnipiac
 Imani Gordon, head coach, Notre Dame, OH
 Chanel Green, assistant coach, Notre Dame, OH
 Hana Haden, head coach, Moberly Area CC
 Kirsten Hammer, assistant coach, Wisconsin-Whitewater
 Victoria Jankoska, assistant coach, Missouri State
 Abby Jump, assistant coach, Memphis

Brittney Kenney, head coach, St. Mary's, MD
 Jenna Kotas, assistant coach, Illinois-Springfield
 Jashae Lee, assistant coach, New Mexico JC
 Kaitlyn Lewis, assistant coach, Scranton
 Victoria Lux, assistant coach, MIT
 Chandler Merkerson, assistant coach, Samford
 Abigail Owings, assistant coach, Eastern Kentucky
 Jalen Powell, assistant coach, Ohio State
 Addy Roller, assistant coach, Drury
 Ashley Yu, assistant coach, Dominican

VICTORY CLUB

1100 wins
 Andy Zihlman, Bishop Lynch High School

900 wins
 David Stricklin, Umpqua Community College

700 wins
 Bruce Consier, Hyde Park Schools
 Ron Jones, Midland College
 Mike Miller, Messiah University

600 wins
 Mike McDevitt, St. Joseph's College (Maine)
 Fred Richter, DeSales University
 Darin Spence, Miles Community College

500 wins
 Denise Bierly, Eastern Connecticut State University
 Ben Conrad, Johnson County Community College

Carey Green, Liberty University
 Sara Lee, Denison University
 Bob Mackey, Christ the King
 Brian Orr, Lewis-Clark State College
 Carrie Seymour, Pace University
 Trena Tills Hoad, Tyler Junior College
 Marion Wells, The Bishop's School

400 wins
 Ginger Colvin, Campbellsville University
 Tricia Cullop, University of Toledo
 Jose Fernandez, University of South Florida
 Janet Malouf, Kutztown University
 Katie Meier, University of Miami
 Rick Stein, University of Southern Indiana

300 wins
 Tim Bernero, Carthage College

Charity Elliott, Point Loma Nazarene University
 Alex Lang, Brooklyn College
 Holly Mulligan, Prestonwood Christian Academy
 Kenny Osborne, Concord University
 Jeri Porter, Francis Marion University
 Brady Sallee, Ball State University

200 wins
 Jennie Baranczyk, University of Oklahoma
 Brad Fischer, University of Wisconsin-Oshkosh
 Lisa Fortier, Gonzaga University
 Bill Himmelberg, University of Providence
 Renee Jimenez, California State University, San Marcos
 Michael Mincey, Carson-Newman University
 Jordan Olufson, Webster University
 Karen Pinkos, Southern New Hampshire University
 Rachelle Sayers, Carroll College

CAROL ECKMAN INTEGRITY IN COACHING AWARD



TRICIA CULLOP
 TOLEDO



NCAA Division I honors

NATIONAL COACH OF THE YEAR

ASSISTANT COACH OF THE YEAR

SPALDING MAGGIE DIXON ROOKIE COACH OF THE YEAR

REGIONAL COACHES OF THE YEAR

Katie Abrahamson-Henderson, Central Florida
 Natasha Adair, Delaware
 Jennie Baranczyk, Oklahoma
 Kim Barnes Arico, Michigan
 Kamie Ethridge, Washington State
 Kelly Rae Finley, Florida
 Kevin McGuff, Ohio State
 Wes Moore, North Carolina State
 Kim Mulkey, Louisiana State
 JR Payne, Colorado
 Lynne Roberts, Utah
 Dawn Staley, South Carolina
 Jeff Walz, Louisville



DAWN STALEY
SOUTH CAROLINA



KATE PAYE
STANFORD



KELLY RAE FINLEY
FLORIDA



NCAA Division I honors (cont'd)

COACHES' ALL-AMERICA

Coaches' All-Americans

Aliyah Boston, South Carolina
 Cameron Brink, Stanford
 Caitlin Clark, Iowa
 Elissa Cunane, North Carolina State
 Naz Hillmon, Michigan
 Rhyne Howard, Kentucky
 Ashley Joens, Iowa State
 Haley Jones, Stanford
 Elizabeth Kitley, Virginia Tech
 Nalyssa Smith, Baylor

Honorable Mention

Shakira Austin, Mississippi
 Diamond Battles, Central Florida
 Kierstan Bell, Florida Gulf Coast
 Grace Berger, Indiana
 Leigha Brown, Michigan
 Veronica Burton, Northwestern
 Nia Clouden, Michigan State
 Lorela Cubaj, Georgia Tech
 Monika Czinano, Iowa
 Mia Davis, Temple
 Anna DeWolfe, Fordham
 Jasmine Dickey, Delaware
 Maya Dodson, Notre Dame
 Emily Engstler, Louisville
 Vivian Gray, Texas Tech
 Rori Harmon, Texas
 Anastasia Hayes, Mississippi State

Continued next page

WADE TROPHY WINNER



ALIYAH BOSTON
SOUTH CAROLINA

DEFENSIVE PLAYER OF THE YEAR



VERONICA BURTON
NORTHWESTERN

FRESHMAN OF THE YEAR presented by adidas



ANEESAH MORROW
DEPAUL



NCAA Division I honors (cont'd)

ACADEMIC TOP 25 TEAM HONOR ROLL

Academic Top 25

1. South Dakota State, Aaron Johnston, 3.837
2. Robert Morris, Charlie Buscaglia, 3.762
3. Maine, Amy Vachon, 3.730
4. Lipscomb, Lauren Sumski, 3.725
- T5. Green Bay, Kevin Borseth, 3.723
- T5. Western Illinois, JD Gravina, 3.723
7. Boise State, Gordy Presnell, 3.721
8. Belmont, Bart Brooks, 3.712
9. Northern Illinois, Lisa Carlsen, 3.681
10. Northern Colorado, Kristen Mattio, 3.663
11. Eastern Illinois, Matt Bollant, 3.661
12. Lehigh, Susan Troyan, 3.654
13. Wyoming, Gerald Mattinson, 3.628
14. Arizona State, Charli Turner Thorne, 3.625
15. Portland, Michael Meek, 3.624
16. Youngstown State, John Barnes, 3.622
17. Iona, Billi Chambers, 3.621
18. Virginia Tech, Kenny Brooks, 3.611
19. Western Michigan, Shane Clippell, 3.605
20. South Dakota, Dawn Plitzuweit, 3.588
21. Tennessee Tech, Kim Rosamond, 3.571
22. Albany, Colleen Mullen, 3.570
23. North Dakota, Mallory Bernhard, 3.560
24. Bowling Green State, Robyn Fralick, 3.554
25. Cal State Northridge, Carlene Mitchell, 3.548

Special Mention

- Northern Iowa, Tanya Warren, 3.546
 Montana State, Tricia Binford, 3.545
 Vermont, Alisa Kresge, 3.541
 Drexel, Amy Mallon, 3.538
 Utah, Lynne Roberts, 3.530
 San Francisco, Molly Goodenbour, 3.526
 Purdue Fort Wayne, Maria Marchesano, 3.525
 Washington State, Kamie Ethridge, 3.523

- Yale, Allison Guth, 3.520
 Toledo, Tricia Cullop, 3.519
 DePaul, Doug Bruno, 3.510
 Cornell, Dayna Smith, 3.502
 Canisius, Sahar Nusseibeh, 3.493
 Michigan State, Suzy Merchant, 3.481
 Davidson, Gayle Coats Fulks, 3.479
 UAB, Randy Norton, 3.478
 Fordham, Stephanie Gaitley, 3.466
 Manhattan, Heather Vulin, 3.466
 Kent State, Todd Starkey, 3.456
 Middle Tennessee State, Rick Insell, 3.454
 Georgetown, James Howard, 3.453
 Portland State, Chelsey Gregg, 3.451
 Creighton, Jim Flanery, 3.444
 UNLV, Lindy La Rocque, 3.428
 Houston Baptist, Donna Finnie, 3.420
 Stanford, Tara VanDerveer, 3.417
 Rice, Lindsay Edmonds, 3.415
 Quinnipiac, Tricia Fabbri, 3.405
 NJIT, Mike Lane, 3.404
 Akron, Melissa Jackson, 3.404
 Georgia State, Gene Hill, 3.403
 Tennessee, Kellie Harper, 3.397
 Richmond, Aaron Roussel, 3.395
 Florida Gulf Coast, Karl Smesko, 3.393
 Rider, Lynn Milligan, 3.392
 Eastern Washington, Joddie Gleason, 3.387
 San Diego, Cindy Fisher, 3.369
 Saint Joseph's, Cindy Griffin, 3.361
 Kansas State, Jeff Mittie, 3.357
 Gonzaga, Lisa Fortier, 3.355
 Fairfield, Joe Frager, 3.350
 Florida State, Sue Semrau, 3.336
 Indiana, Teri Moren, 3.329
 Kansas, Brandon Schneider, 3.326
 Liberty, Carey Green, 3.314

- Indiana State, Chad Killinger, 3.314
 Binghamton, Bethann Ord, 3.311
 Maryland Eastern Shore, Fred Batchelor, 3.298
 Saint Mary's, Paul Thomas, 3.291
 South Carolina, Dawn Staley, 3.289
 Notre Dame, Niele Ivey, 3.280
 Dartmouth, Adrienne Shibles, 3.249
 Central Florida, Katie Abrahamson-Henderson, 3.239
 Texas State, Zenarae Antoine, 3.237
 Seton Hall, Anthony Bozzella, 3.232
 La Salle, Mountain MacGillivray, 3.222
 FAU, Jennifer Sullivan, 3.220
 Michigan, Kim Barnes Arico, 3.220
 Colorado, JR Payne, 3.217
 Nebraska, Amy Williams, 3.204
 Western Carolina, Kiley Hill, 3.202
 Coastal Carolina, Jaida Williams, 3.198
 New Mexico, Mike Bradbury, 3.193
 Stony Brook, Ashley Langford, 3.185
 Longwood, Erika Lang-Montgomery, 3.181
 Florida, Kelly Rae Finley, 3.170
 Minnesota, Lindsay Whalen, 3.151
 UC-Berkeley, Charmin Smith, 3.146
 Pacific, Bradley Davis, 3.143
 Sacred Heart, Jessica Mannetti, 3.142
 Appalachian State, Angel Elderdin, 3.131
 Kentucky, Kyra Elzy, 3.096
 Lamar, Aqua Franklin, 3.092
 Texas Tech, Krista Gerlich, 3.088
 San Diego State, Stacie Terry, 3.087
 Louisiana Monroe, Brooks Williams, 3.086
 Vanderbilt, Shea Ralph, 3.085
 North Carolina State, Wes Moore, 3.084
 Western Kentucky, Greg Collins, 3.083
 UNC Asheville, Honey Brown, 3.079
 UC-Irvine, Tamara Inoue, 3.064
 Missouri State, Amaka Agugua-Hamilton, 3.027.

COACHES' ALL-AMERICA

Continued from previous page

- Destanni Henderson, South Carolina
 Mya Hollingshed, Colorado
 Mackenzie Holmes, Indiana
 Jordan Horston, Tennessee
 Lexie Hull, Stanford
 Morgan Jones, Florida State
 Deja Kelly, North Carolina
 Ayoka Lee, Kansas State
 Charlissee Leger-Walker, Washington State
 Taylor Mikesell, Ohio State
 Olivia Miles, Notre Dame
 Aneesah Morrow, DePaul
 Charisma Osborne, UCLA
 Te-Hina Paopao, Oregon
 Khayla Pointer, Louisiana State
 Angel Reese, Maryland
 Cate Reese, Arizona
 Nyara Sabally, Oregon
 Jacy Sheldon, Ohio State
 Maddy Siegrist, Villanova
 Kianna Smith, Louisville
 Kiara Smith, Florida
 Hailey Van Lith, Louisville
 Christyn Williams, Connecticut
 Madi Williams, Oklahoma



NCAA Division II honors

REGIONAL COACHES OF THE YEAR

Buffie Burson, North Georgia
 Jason Burton, Texas A&M-Commerce
 Lori Fish, St. Cloud State
 Paul Honsinger, Eckerd
 Ryan McCarthy, Alaska-Anchorage
 Karen Pinkos, Southern New Hampshire
 Kim Stephens, Glenville State
 Mike Williams, Grand Valley State

COACHES' ALL-AMERICA

Coaches' All-Americans

Abby Beeman, Shepherd
 Makaila Cange, Lander
 Nija Collier, Central Missouri
 Kwajelin Farrar, Valdosta State
 Brooke Olson, Minnesota-Duluth
 Dyani Robinson, Texas A&M-Commerce
 Paige Robinson, Drury
 Julianne Sutton, North Georgia
 Dejah Terrell, California, PA
 Jaelencia Williams, Union

Honorable Mention

Aliyah Abney, Tampa
 Sha Carter, Walsh
 Alisha Davis, CSU-Pueblo
 Rylee Derr, Kutztown

NATIONAL COACH OF THE YEAR



KIM STEPHENS
 GLENVILLE STATE

ASSISTANT COACH OF THE YEAR



JORDAN MELLOTT
 DRURY

PLAYER OF THE YEAR



JULIANNE SUTTON
 NORTH GEORGIA

Continued next page



NCAA Division II honors (cont'd)

ACADEMIC TOP 25 TEAM HONOR ROLL

Academic Top 25

- 1, Fort Hays State, Tony Hobson, 3.814
- T2, Ursuline, Shannon Sword, 3.806
- T2, Northwest Missouri State, Austin Meyer, 3.806
- 4, Lubbock Christian, Steve Gomez, 3.805
- 5, East Stroudsburg, Stephanie Del Preore, 3.800
- 6, Ashland, Kari Pickens, 3.798
- T7, William Jewell, Jill Slominski, 3.770
- T7, Montana State Billings, Kevin Woodin, 3.770
- 9, Kutztown, Janet Malouf, 3.768
- 10, Pace, Carrie Seymour, 3.755
- 11, Minot State, Mike Brandt, 3.753
- 12, Point Loma Nazarene, Charity Elliott, 3.746
- 13, Embry-Riddle, Lisa Wilson, 3.745
- 14, Montevallo, Gary Van Atta, 3.736
- 15, Michigan Tech, Samantha Clayton, 3.734
- 16, Adelphi, Sade Jackson, 3.727
- 17, Nebraska Kearney, Carrie Eighmey, 3.725
- 18, Wayne State, Carrie Lohr, 3.723
- 19, Minnesota State Moorhead, Karla Nelson, 3.686
- 20, Seton Hill, Mark Katariski, 3.679
- 21, Henderson State, Jill Thomas, 3.678
- 22, Lindenwood, Katie Falco, 3.670
- 23, Rockhurst, Larry Park, 3.658
- 24, Fort Lewis, Taylor Harris, 3.653
- 25, Charleston, Tianni Kelly, 3.643

Special Mention

- Truman State, Theo Dean, 3.637
 Chestnut Hill, Jim Connolly, 3.625
 Southern New Hampshire, Karen Pinkos, 3.620
 Emory & Henry, Jaclyn Dickens, 3.611
 UC-Colorado Springs, Lynn Plett, 3.604
 Southwest Minnesota State, Tom Webb, 3.600
 McKendree, Kari Kerkhoff, 3.598
 Augustana, Dave Krauth, 3.591
 Wisconsin-Parkside, Jen Conely, 3.576
 Mary, Rick Neumann, 3.570
 Southwest Baptist, Kelsey Keizer, 3.561
 Alaska Fairbanks, Jessie Craig, 3.557
 St. Thomas Aquinas, Bill Cleary, 3.552
 Minnesota State, Emilee Thiesse, 3.552
 Western Washington, Carmen Dolfo, 3.545
 Hillsdale, Charlie Averkamp, 3.538
 Chadron State, Janet Raymer, 3.536
 Davenport, Travis Schuba, 3.507
 Bemidji State, Chelsea DeVille, 3.507
 Gannon, Cleve Wright, 3.498
 Seattle Pacific, Mike Simonson, 3.488
 Winona State, Scott Ballard, 3.477
 Wingate, Ann Hancock, 3.466
 Metro State Denver, Tanya Haave, 3.466
 Miles, Phillip Wallace, 3.460
 Holy Family, Bernadette Laukaitis, 3.447
 Illinois Springfield, Casey Thousand, 3.440
 Valdosta State, Deandra Schirmer, 3.383
 South Dakota Mines, Jeri Jacobson, 3.380
 Daemen, Jenepher Banker, 3.375
 Goldey-Beacom, Bethann Burke, 3.362
 Tusculum, Meagan Price, 3.338
 Stonehill, Trisha Brown, 3.328
 Union, Mark Campbell, 3.327
 California State East Bay, Shanelle Stires, 3.325
 Fort Valley State, Andrea Williams, 3.322
 Azusa Pacific, T.J. Hardeman, 3.313
 Chaminade, Arthur King, 3.303
 Barry, Kristina Baugh, 3.289
 West Florida, Stephanie Yelton, 3.276
 Oklahoma Christian, Stephanie Findley, 3.255
 Cal San Marcos, Renee Jimenez, 3.251
 Bentley, C White, 3.242
 Dominican (CA), Tim LaKose, 3.231
 West Texas A&M, Josh Prock, 3.229
 Christian Brothers, Jessie Carmack, 3.224
 Hawaii Hilo, David Kaneshiro, 3.220
 Cal State San Bernardino, Casandra Renno, 3.209
 Coker, Melissa DeVore, 3.201
 Northwest Nazarene, Steve Steele, 3.176
 Converse, Samantha Davidson, 3.109
 St. Mary's (Texas), Jason Martens, 3.081
 Cal State LA, Torino Johnson, 3.069
 Academy of Art, Krystle Evans, 3.049

COACHES' ALL-AMERICA

Continued from previous page

- Emma Duff, Western Washington
 Riley Friauf, Dominican
 Maighan Hedge, Cameron
 Jess Huber, USciences
 Julia Jenike, Florida Southern
 Kelsey Johnson, Central Oklahoma
 Margarete (Meg) Knollmeyer, Southern New Hampshire
 Shameka McNeill, Anderson
 Alyssa Nelson, Wisconsin-Parkside
 Shanika Peterkin, Barton
 Samantha Pirosko, Gannon
 Kayla Raymond, Stonehill
 Annie Roshak, Ashland
 Julia Ruzevich, Lindenwood
 Lauren Schetter, Pace
 Haley Schubert, Lee
 Allie Schulte, Lubbock Christian
 Taryn Shelley, Montana State-Billings
 Peyton Steinman, Saint Anselm
 Audrey Tingle, West Liberty
 Makyra Tramble, Southwestern Oklahoma State
 Bryanna Troutman, Wingate
 Daniella Turner, Colorado Mesa
 Tennaev Voliva, Alaska-Anchorage
 Tori Wortz, St Cloud State



NCAA Division III honors

REGIONAL COACHES OF THE YEAR

Meg Barber, NYU
 William Broderick, Christopher Newport
 Nicholas DiPillo, Scranton
 Michelle Ferenz, Whitman
 Juli Fulks, Transylvania
 Lynn Hersey, Smith
 Alison Montgomery, Bates
 Brian Morehouse, Hope
 Brian Niemuth, Simpson
 Dan Raymond, Ithaca

COACHES' ALL-AMERICA

Coaches' All-Americans

Abby Anderson, Scranton
 Tara Bieniewicz, Trine
 Sondra Fan, Christopher Newport
 Hanna Geistfeld, Bethany Lutheran
 Elyce Knudsen, Millikin
 Diarra Oden, Johns Hopkins
 Maggie Russell, Tufts
 Kennedy Schoonveld, Hope
 Dani Valdez, Amherst
 Jenny Walker, NYU

Honorable Mention

Jadyn Abrams, Nazareth
 Christina Antonakakis, MIT

NATIONAL COACH OF THE YEAR



MEG BARBER
 NYU

ASSISTANT COACH OF THE YEAR



ALEX TOMLINSON
 CHRISTOPHER NEWPORT

PLAYER OF THE YEAR



KENEDY SCHOONVELD
 HOPE

Continued next page



NCAA Division III honors (cont'd)

WOMEN'S COLLEGIATE ALL-STAR TEAM

Abby Anderson, Scranton
 Christina Antonakakis, MIT
 Tara Bieniewicz, Trine
 Veronica Christ, Elizabethtown
 Sondra Fan, Christopher Newport
 Kadance Garrish, Southern Virginia
 Hanna Geitsfeld, Bethany Lutheran
 Jayla Johnson, North Park
 Averi Jordan, DeSales
 Shannon McCoy, Kean

Kaylie McCracken, Whitman
 Olivia Nagy, John Carroll
 Diarra Oden, Johns Hopkins
 Julianna Okoniewski, Rochester
 Leah Porath, UW-Oshkosh
 Kenedy Schoonveld, Hope
 Leah Springer, Messiah
 Jenna Taylor, Simpson
 Dani Valdez, Amherst
 Olivia Voskuil, Hope



COACHES' ALL-AMERICA

Continued from previous page

Anna Barry, Eastern Connecticut State
 Megan Bauman, Babson
 Nickie Carter, Montclair State
 Veronica Christ, Elizabethtown
 Bailey Donovan, Husson
 Lilly Edwards, Baldwin Wallace
 Anna Fanelli, Colorado College
 Kadance Garrish, Southern Virginia
 Sarah Gilooly, Vassar
 Aleah Grundahl, UW-Whitewater
 Vania Hampton, Sul Ross State
 Nicole Heffington, John Carroll
 Jordan Hildebrand, Millikin
 Megan Horn, Washington & Lee
 Sam Hourihan, Springfield
 Chanel Jemmott, Brooklyn
 Jayla Johnson, North Park
 Averi Jordan, DeSales

Madison Kellione, Transylvania
 Alli Mayeux, Rhodes
 Shannon McCoy, Kean
 Kaylie McCracken, Whitman
 Bridget Monaghan, Scranton
 Kaylee Murphy, UC-Santa Cruz
 Olivia Nagy, John Carroll
 Julianna Okoniewski, Rochester
 Kaylee Otlowski, Salisbury
 Olivia Parisi, William Smith
 Katelyn Pickunka, Smith
 Leah Porath, UW-Oshkosh
 Sydney Przygoda, Utica
 Jessie Ruden, UW-Eau Claire
 aleigh Ryan, Wesleyan
 Leah Springer, Messiah
 Cassandra Stapelfeld, Saint Joseph's
 Klaire Steffens, Chicago
 Jenna Taylor, Simpson
 Keauna (KJ) Whirfield, LeTourneau



NCAA Division III honors (cont'd)

ACADEMIC TOP 25 TEAM HONOR ROLL

Academic Top 25

1, Emerson, Bill Gould, 3.840
 T2, Macalester, Katie Kollar, 3.763
 T2, Martin Luther, Dan Gawrisch, 3.763
 4, Middlebury, KJ Krasco, 3.761
 5, Wisconsin-Stout, Hannah Iverson, 3.758
 6, St. John Fisher, Melissa Kuberka, 3.722
 7, John Carroll, Beth Andrews, 3.708
 8, Trine, Andy Rang, 3.707
 9, Misericordia, Jason Rhine, 3.696
 10, UW-Stevens Point, Shirley Egner, 3.695
 T11, Stevens, Megan Haughey, 3.681
 T11, Dubuque, Justin Smith, 3.681
 13, Carroll, Lindsay Schultz, 3.680
 14, Baldwin Wallace, Cheri Harrer, 3.674
 T15, MIT, Lucia Robinson-Griggs, 3.670
 T15, Smith, Lynn Hersey, 3.670
 17, Gustavus Adolphus, Laurie Kelly, 3.668
 T18, Washington and Lee, Christine Clancy, 3.662
 T18, Wartburg, Bob Amsberry, 3.662
 20, St. Catherine, Donald Mulhern, 3.660
 21, St. Scholastica, Jason Schmitz, 3.657
 22, William Smith, Lindsay Sharman, 3.647
 23, Hope, Brian Morehouse, 3.641
 T24, Yeshiva, Bill Zatulskis, 3.640
 T24, UW-River Falls, Blake Dudonis, 3.640

Special Mention

Millikin, Olivia Leit, 3.638
 Russell Sage, Allison Goleman, 3.635
 NYU, Meg Barber, 3.635
 Claremont-Mudd-Scripps, Chanel Murchison, 3.627

Swarthmore, Dawn Grant, 3.625
 Case Western Reserve, Jennifer Reimer, 3.621
 Utica, Michele Davis, 3.617
 Washington (St. Louis), Randi Henderson, 3.615
 Williams, Pat Manning, 3.611
 SUNY Geneseo, Alyssa Polosky, 3.606
 Vassar, Anthony Mason, 3.606
 Kenyon, Grace Elliott, 3.606
 Edgewood, Chaia Huff, 3.603
 Heidelberg, Rachel Ferri, 3.602
 York, Betsy Witman, 3.596
 UW-Whitewater, Keri Carollo, 3.592
 Sarah Lawrence, Bradley Alexander, 3.590
 Shenandoah, Melissa Smeltzer-Kraft, 3.586
 UW-Oshkosh, Brad Fischer, 3.578
 Endicott, Brittany Hutchinson, 3.570
 Elmhurst, Tethnie Carrillo, 3.570
 Susquehanna, Gabby Holko, 3.565
 Nebraska Wesleyan, Samuel Dixon, 3.565
 Calvin, Mark Christner, 3.564
 Oberlin, Stephany Dunmyer, 3.564
 Ithaca, Dan Raymond, 3.556
 UW-Eau Claire, Tonja Englund, 3.551
 Worcester State, Karen Tessmer, 3.550
 Westminster, Rosanne Scott, 3.550
 Central, Joe Steinkamp, 3.546
 Saint Mary's (IN), Melissa Makielski, 3.542
 Manchester, Josh Dzurick, 3.539
 SUNY Oneonta, Daphne Thompson, 3.536
 Emory, Misha Jackson, 3.532
 North Central, Paul Brunner, 3.532
 Penn State Harrisburg, Ross Patrick, 3.511
 St. Joseph's (ME), Mike McDevitt, 3.507
 DePauw, Kris Huffman, 3.506
 Saint Mary's (MN), David Foley, 3.501
 Messiah, Mike Miller, 3.495
 Marymount, Margaret White, 3.488
 Catholic, Matt Donohue, 3.487
 Chapman, Carol Jue, 3.476
 Augustana (IL), Mark Beinborn, 3.475
 St. Olaf, Kelly Mahlum, 3.475
 Arcadia, Rose Katz-Gobeli, 3.473
 Muskingum, Erin Eaton, 3.471
 Suffolk, Ed Leyden, 3.469
 Penn College, Britni Mohney, 3.468
 UW-La Crosse, Karen Middleton, 3.460
 Illinois, Jennifer McCormick, 3.455
 Puget Sound, Casey Kushiyama, 3.454
 Luther, Amanda Bailey, 3.453
 Carthage, Tim Bernero, 3.450
 Elizabethtown, Veronica Nolt, 3.449
 Roger Williams, Kelly Thompson, 3.446
 Husson, Kissy Walker, 3.436
 Simpson, Brian Niemuth, 3.434
 Maine Farmington, Jamie Beaudoin, 3.431
 Marietta, Kole Vivian, 3.431
 SUNY Cortland, Jacey Brooks, 3.430
 Sul Ross State, Katie Novak, 3.429
 Lynchburg, Allison Nichols, 3.424
 Kean, Mandy King, 3.418
 Brooklyn, Alex Lang, 3.417
 Brandeis, Carol Simon, 3.415
 Marywood, Jen Carleton, 3.415
 Rochester, James Scheible, 3.409
 Albion, Doreen Carden, 3.407
 Skidmore, Jessica Turner, 3.404

Emmanuel, Andy Yosinoff, 3.403
 Bryn Mawr, Carla Coleman, 3.396
 Drew, John Olenowski, 3.384
 Mount Union, Suzy Venet Pietz, 3.381
 Ohio Northern, Mark Huelsman, 3.370
 Moravian, Mary Beth Spirk, 3.367
 Regis, Samantha Crough, 3.360
 Illinois Wesleyan, Mia Smith, 3.335
 Minnesota Morris, Tim Grove, 3.335
 DeSales, Fred Richter, 3.334
 Wilmington, Janel Blankespoor, 3.334
 Southern Maine, Samantha Norris, 3.331
 Gettysburg, Nate Davis, 3.318
 Redlands, Rich Murphy, 3.307
 Kalamazoo, Katie Miller, 3.305
 Dominican, Antonio Rivas, 3.293
 Capital, Camille McPherson, 3.292
 Loras, Justin Heinzen, 3.286
 Anderson (IN), Jon Gin, 3.274
 Ozarks, Shauna Watson, 3.262
 Whitman, Michelle Ferenz, 3.259
 Monmouth, Megan Jones, 3.249
 Coe, Kayla Waskow, 3.241
 Adrian, Kathy Morris, 3.229
 SUNY Brockport, Corinne Jones, 3.208
 UT-Dallas, Polly Thomason, 3.206
 Mary Washington, Deena Applebury, 3.191
 St. Joseph's (Brooklyn), Thomas Flahive, 3.190
 Franklin and Marshall, Brianna Spector, 3.172
 Gallaudet, Stephanie Stevens, 3.166
 Willamette, Peg Swadener, 3.158
 Grove City, Chelle Fuss, 3.124
 St. Mary's (MD), Brittney Kenney, 3.121



NAIA honors

REGIONAL COACHES OF THE YEAR

Jessie Biggs, Indiana Tech
 Jason Christensen, Dakota Wesleyan
 Ginger Colvin, Campbellsville
 Wes Keller, Rocky Mountain
 Alex Moorehead, Ave Maria
 Taylor Possail, Columbia (MO)

COACHES' ALL-AMERICA

Coaches' All-Americans

Bailey Albright, Sterling
 Peyton Banks, Siena Heights
 Stefanie Berberabe, Westmont
 Grace Beyer, St. Louis Pharmacy
 N'Dea Flye, Rocky Mountain
 Imani Guy, Marian
 Jaycie Jenkins, Milligan
 Ashlee McGeorge, Campbellsville
 Stephanie Soares, The Master's
 Morgan Stamper, Pikeville

Honorable Mention

Ashlyn Adkins, Faulkner
 Claire Austin, Saint Xavier
 Millie Bryant, Bethel (TN)
 Milagros Carrera, Okla. Science & Arts
 Zaria Dorsey, Okla. Science & Arts
 Rebekah Engle, William Carey

NATIONAL COACH OF THE YEAR



WES KELLER
 ROCKY MOUNTAIN

ASSISTANT COACH OF THE YEAR



MIRANDA DENNEY
 CAMPBELLSVILLE

PLAYER OF THE YEAR



STEPHANIE SOARES
 THE MASTER'S

Continued next page



NAIA honors (cont'd)

ACADEMIC TOP 25 TEAM HONOR ROLL

Academic Top 25

- 1, Hastings, Jina Douglas, 3.901
- 2, Iowa Wesleyan, Steve Williamson, 3.892
- 3, Taylor, Jody Martinez, 3.756
- 4, Sterling, Katherine Bassett, 3.750
- 5, Grace, Dan Davis, 3.703
- 6, Carroll, Rachelle Sayers, 3.695
- 7, Jamestown, Thad Sankey, 3.687
- 8, Tabor, Shawn Reed, 3.664
- 9, Columbia (MO), Taylor Possail, 3.647
- 10, Lewis-Clark State, Brian Orr, 3.645
- 11, St. Ambrose, Krista Van Hauen, 3.639
- 12, John Brown, Jeff Soderquist, 3.637
- 13, Providence (MT), William Himmelberg, 3.618
- 14, Faulkner, Reed Sutton, 3.609
- 15, Point Park, Tony Grenek, 3.563
- 16, College of Idaho, Janis Beal, 3.554
- 17, West Virginia Tech, Roger Hodge, 3.544
- 18, Culver-Stockton, Janette Burgin, 3.538

- 19, Embry-Riddle (AZ), Michael Trujillo, 3.520
- 20, Clarke, Courtney Boyd, 3.493
- 21, Indiana Tech, Jessie Biggs, 3.486
- 22, Olivet Nazarene, Lauren Glenn, 3.467
- 23, Hannibal-LaGrange, Kelly Quigle, 3.463
- 24, Mount Marty, Todd Schlimgen, 3.459
- 25, Montana Tech, Carly Sanon, 3.432

Special Mention

- Peru State, Ian Holleran, 3.422
 Bellevue, Dave Denly, 3.388
 Rio Grande, David Smalley, 3.375
 San Diego Christian, Shawn Chaffin, 3.335
 Benedictine, Chad Folsom, 3.329
 Kansas Wesleyan, Ryan Showman, 3.324
 Huntington, Lori Culler, 3.261
 UC Merced, Sarah Hopkins-Chery, 3.157
 Saint Louis HSP, Jeff Reis, 3.091.

COACHES' ALL-AMERICA

Continued from previous page

- Mary Englert, Pikeville
 Kennedy Hansberry, Loyola
 Amanda Hill, Kansas Wesleyan
 Kelcey Hinz, Kansas Wesleyan
 Iyree Jarrett, Westmont
 Emilee Maldonado, Providence
 Jordan Pyle, St. Francis
 McKinley Seal, William Carey
 Mallory Shetley, Columbia (MO)
 Zoe Shieldnight, Tabor
 Ella Skeens, Rio Grande
 Tarrah Stephens, John Brown
 Emma Tuominen, Indiana Tech
 Taya Wilson, Sterling



Two-year college honors

COACHES' ALL-AMERICA

Coaches' All-Americans

Alexia Dizeko, South Georgia Tech
 Kortney Drake, Kirkwood
 Kerrighan Dunn, Kilgore
 Indya Green, Moberly Area
 Danna Grenald, New Mexico
 Nadechka Laccen, Tyler
 Zaraya March, Angelina
 Alyssa Morris, Southwestern
 Tai'Sheka Porchia, Pensacola State
 Jashanti Simmons, Georgia Highlands

Honorable Mention

Jordyn Carter, Temple
 Abby Cater, Trinity Valley
 Chariah Daniels, Pratt
 McKenna Eddings, Moberly Area
 Fanta Gassama, South Georgia Tech
 Kiarra Henderson, Colby
 Rahmena Henderson, Kilgore
 Jada Hood, Kilgore
 Ma'kaila Lewis, Bossier Parish
 Makiyah McCollister, Trinity Valley
 Brie Opdyke, Raritan Valley
 Niyah Page, Trinity Valley
 Calysia Phillips, Northeast Mississippi
 Kierra Prim, Johnson County
 Faith Robinson, Bossier Parish
 Alexandra Sishkina, Georgia Highlands
 Savanna Smith, Coastal Bend
 Emily Strachan, Central Maine
 O'Mariyah Tucker, Georgia Highlands
 Lovietta Walker, Angelina
 Asia Wheeler, Coastal Bend
 Kristin Williams, Pensacola State

NATIONAL COACH OF THE YEAR



BRANDAN HARRELL
 GEORGIA HIGHLANDS

ASSISTANT COACH OF THE YEAR



ANGELICA DE PAULO
 EASTERN ARIZONA

PLAYER OF THE YEAR



JASHANTI SIMMONS
 GEORGIA HIGHLANDS

ACADEMIC TOP 25 TEAM HONOR ROLL

- 1, Dawson, Romeo Lagmay, 3.490
- 1, Umpqua, Dave Stricklin, 3.490
- 3, McHenry County, Karen Wiley, 3.465
- 4, Colby, James Cole, 3.451
- 5, Pratt, Eric Rodewald, 3.422
- 6, Howard, John Ishee, 3.323
- 7, Ventura, Ned Mircetic, 3.288
- 8, Paris, Brittany Christian, 3.251
- 9, New Mexico, Austin Mefford, 3.240
- 10, Cypress, Margaret Mohr, 3.220
- 11, Highland, Jordon O'Brien, 3.183
- 12, Pima College, Todd Holthaus, 3.181
- 13, Northeast Mississippi, Brenda Mayes, 3.159
- 14, Lincoln Trail, Zach Loll, 3.019

* There were only 14 institutions eligible for ranking in the two-year college division.



High school honors

COACHES' ALL-AMERICA

Coaches' All-Americans

Janiah Barker, Montverde (FL)
 Raegan Beers, Valor Christian (CO)
 Lauren Betts, Grandview (CO)
 Isuneh Brady, Cathedral Catholic (CA)
 Timea Gardiner, Fremont (UT)
 Chance Gray, Winton Woods (OH)
 Maya Nnaji, Hopkins (MN)
 Ayanna Patterson, Homestead (IN)
 Justine Pissott, Red Bank Catholic (NJ)
 Kiki Rice, Sidwell Friends (DC)

Honorable Mention

KK Bransford, Mount Notre Dame (OH)
 Paris Clark, Long Island Lutheran (NY)
 Talaysia Cooper, East Clarendon (SC)
 Alyssa Crockett, Westfield (IN)
 Aaliyah Gayles, Spring Valley (NV)
 Kailyn Gilbert, IMG (FL)
 Ashlon Jackson, Hardin Jefferson (TX)
 Gabriela Jaquez, Adolfo Camarillo (CA)
 Flau'jae Johnson, Sprayberry (GA)
 Londynn Jones, Santiago (CA)
 Ta'Niya Latson, American Heritage (FL)
 Darianna Littlepage-Buggs, Classen (OK)
 Tonie Morgan, Florida High (FL)
 Indya Nivar, Apex Friendship (NC)
 Lazaria Spearman, Dacula (GA)
 Hannah Stines, Orangewood CA
 Grace VanSlooten, IMG (FL)
 Ashlyn Watkins, Cardinal Newman (SC)
 Lani White, Mater Dei (CA)
 Ruby Whitehorn, Detroit Edison (MI)

NATIONAL COACH OF THE YEAR



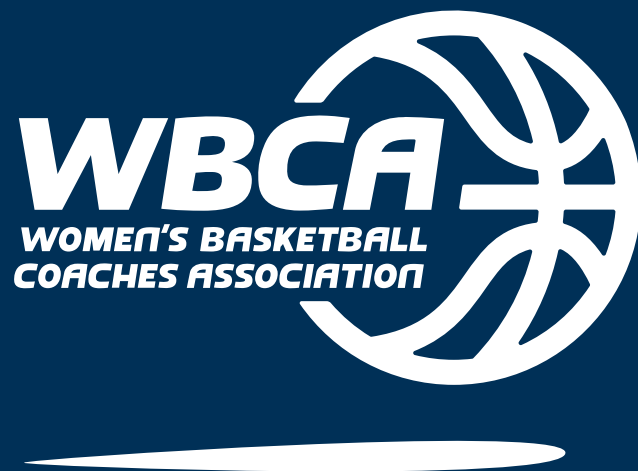
ALICIA KOMAKI
 SIERRA CANYON (CALIFORNIA)

PLAYER OF THE YEAR



LAUREN BETTS
 GRANDVIEW (COLORADO)





**WOMEN'S BASKETBALL
COACHES ASSOCIATION**

4646 Lawrenceville Highway
Lilburn, Georgia 30047

770-279-8027
membership@wbca.org
WBCA.org