

New Brand. New Look. New Direction.

IT'S ABOUT YOUR JOURNEY!



2015-16 Annual Report

CONTENTS

- Introduction 2
- Letter to Members..... 3
 - Membership Report..... 3
 - Strategic Plan 2014-18..... 4
 - Your Coaching Journey 5
 - The Story of a Logo 6
 - Financial Report 7
- 2015-16 WBCA Board of Directors..... 8
- WBCA Staff.....10
- Recognition.....11
- Looking Ahead22

Dear Member,

As I began to compose this letter I realized how quickly my first year passed as your President. It was a year that had many rewarding moments. It was a year to remember. It was a year of change.

We reaffirmed our mission, which is to provide our members with quality professional development and educational programs that assist us in improving the quality and popularity of the game. We evolved our existing programs to reflect the work the WBCA is currently doing, as well as began the development of new programs to reflect the work we plan to do in the coming years. Most significantly, we launched a new brand, a new visual identity and a new website — all based on reflecting and meeting our members’ needs as coaches of girls’ and women’s basketball. Executive Director Danielle Donehew has provided outstanding leadership, and the WBCA staff has displayed tremendous dedication and commitment to serving us. Without their stewardship of our Association and its many programs the accomplishments of the past year would not have been possible.

This annual report for the 2015-16 membership year summarizes those many accomplishments. It also recognizes, once again, the more than 680-plus individuals and teams who were honored for their performances on the court and in the classroom, as well as their contributions to the Association.

Even as we celebrate our accomplishments in the year just past, we have already begun earnestly implementing our exciting plans for the 2016-17 membership year. I wrote to you in September regarding some of those plans. That email is reprinted for your convenience at the end of this report.

Our first 35 years have been a time of accomplishment and also lessons learned. Now, with a new brand identity as our guide, we are more committed than ever to accomplishing our mission and realizing our vision of being coaches united for the good of our game.

Warmly,

Coquese Washington
Head Coach, Penn State University
President



New Brand.
New Look.
New Direction.

IT'S ABOUT YOUR JOURNEY!

Letter to Members

The 2015-16 membership year was one of the most exciting in our 35-year history! We pivoted our focus — in a big way — from being about the work of the Association in general to being about your needs as members. And we changed our brand, our visual identity and our website to reflect it.

All of this, however, didn't just happen overnight. We actually started about two years ago — shortly after I took over as your executive director — when our leadership and staff started to consider the WBCA's future, and how to write the next chapter of its story as an organization. It wasn't easy.

We honor our history. The work and words and incredible leadership of the coaches who helped shape this organization over the last 35 years

has made us who we are. From the fight to get and keep Title IX on the books, to the beginning and end of the AIAW, through new playing rules and recruiting regulations, and, ultimately, to women's basketball becoming a global sport, the WBCA has been a consistent voice for coaches of the game.

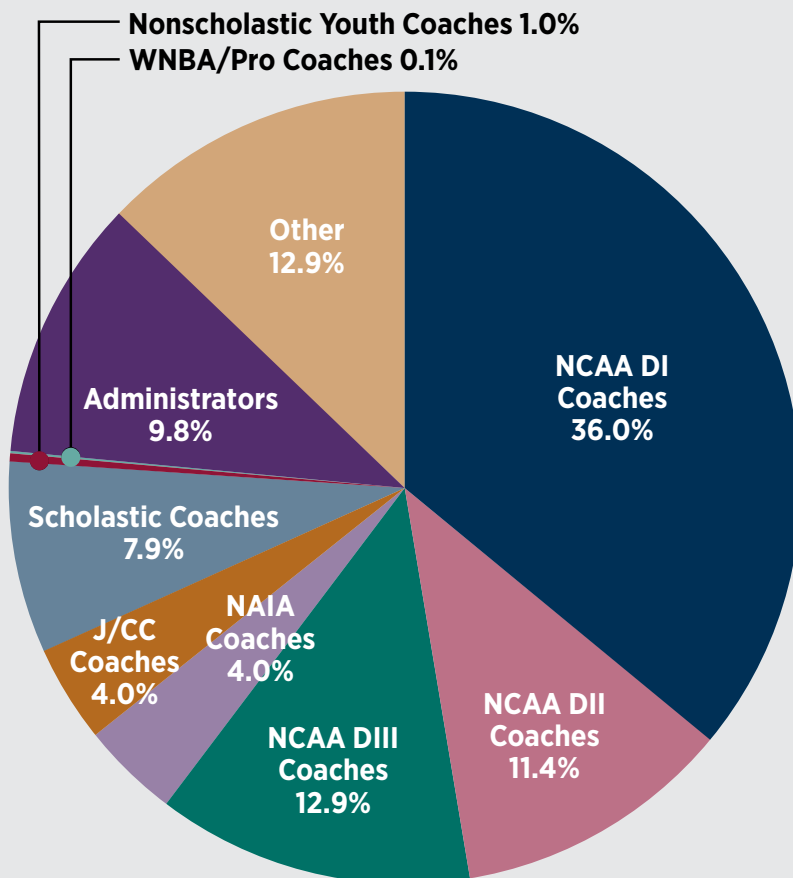
But in talking about who we want to be now and in the future . . . well, that's a more complicated question, isn't it. Before we could answer it, we had to understand how you — our members — saw the WBCA now.

To help with this difficult task, we hired Global Prairie, a digital marketing firm based in Kansas City, Missouri, which immediately began talking about the WBCA with members and nonmembers alike, as well as reviewing the results of past

2015-16 MEMBERSHIP REPORT

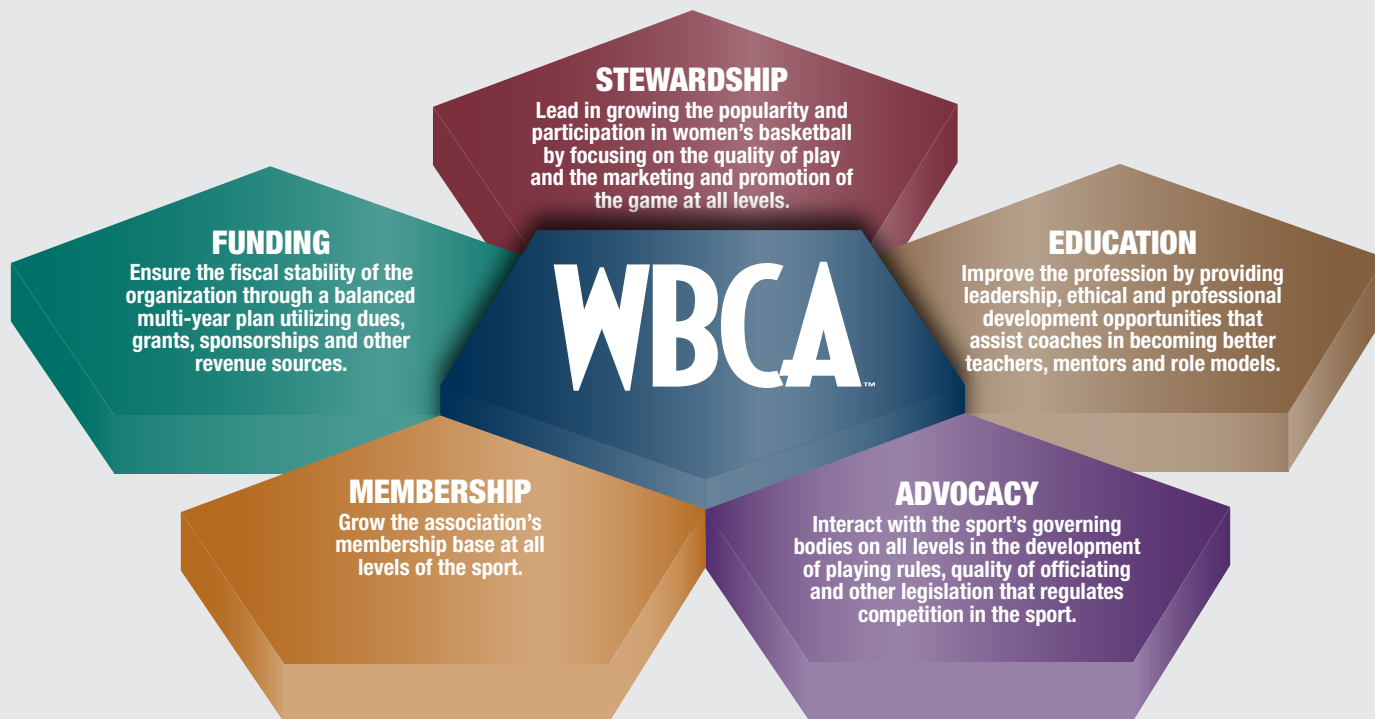
The WBCA membership totaled 3,957 as of September 12, 2016, which breaks down as follows:

- NCAA Division I Coaches - 1,423
- NCAA Division II Coaches - 451
- NCAA Division III Coaches - 512
- NAIA Coaches - 158
- Junior/Community College Coaches - 157
- Scholastic Coaches - 312
- Non-Scholastic Youth Coaches - 31
- Administrators - 390
- WNBA/Other Pro Coaches - 13
- Other* - 510



*-Other includes NCCAA coaches, USCAA coaches, independent college coaches, international coaches, retired/inactive coaches, athletes, fans, allied business/organizations, etc.

STRATEGIC PLAN 2014-18: WHO WE ARE. WHAT WE DO.



Our vision reflects who we are

The WBCA is the unified voice of coaches of women's basketball and leads in the growth and management of the sport. The WBCA will have a dynamic partnership with the sport's governing bodies on all levels and will be the premier source of professional development and educational programs on coaching, operations, branding and marketing that assist its member coaches in improving the quality and popularity of the game.

Our strategic goals reflect what we do

The WBCA's five strategic goals fit within the five core services the Association provides its membership — Stewardship, Education, Advocacy, Membership and Funding.

membership surveys and conducting new ones.

I can tell you that in our focus groups and discussions over the last couple of years there was plenty of uncertainty about what need we filled. One thing was fairly clear to everyone — we hold the convention. And, by most accounts, we do a pretty outstanding job of creating valuable programming and networking for you during the week of the Women's Final Four. Members, however, weren't sure about who we are outside of those few days of the convention each year.

So, we knew the WBCA's promise to

its members — its brand — needed to be rediscovered. With plenty of online education accessible to our members and an abundance of coaching clinics around the country, we had to look at where we can carve out our unique niche.

Our New Brand: Where Leadership in Women's Basketball Lives

What we came to realize is that the WBCA needs to be the place where leaders of women's basketball are created. Not only should we be focused on helping you be great coaches, but great leaders, great

teachers and great mentors to your athletes as well. Because they deserve the very best of you and us. Because you need to have every tool available to shape your athletes into strong women and lifelong fans and advocates of the sport.

The WBCA needs to be the place where coaches — from high school to the highest levels of the college game, from AAU to the WNBA — can come together freely, share their achievements, exchange ideas, and find solutions to the challenges they face — both on the court and off.

The WBCA is more than an organization. We are a living,

breathing community — a powerful one — whose strength lies in the experience, expertise and active participation of each and every member. A true place of association, where all of you bring to the table your own individual story — your coaching journey. And yet it is also a place where you can look around at your peers and feel connected because you are all united in your undeniable, unwavering and unstoppable passion for coaching women’s basketball — a commitment that is inspiring.

With this new brand in hand, we worked with Global Prairie to develop a new visual identity (new logo and color palette) that reflects our new uplifting, forward-looking direction, which we unveiled during the 2016

WBCA Convention in Indianapolis. We also spent much of the first half of the 2015-16 membership year designing and building a totally new website, which likewise we launched the week of Convention, that will become the cornerstone for delivering on our new brand as we feed and grow this community.

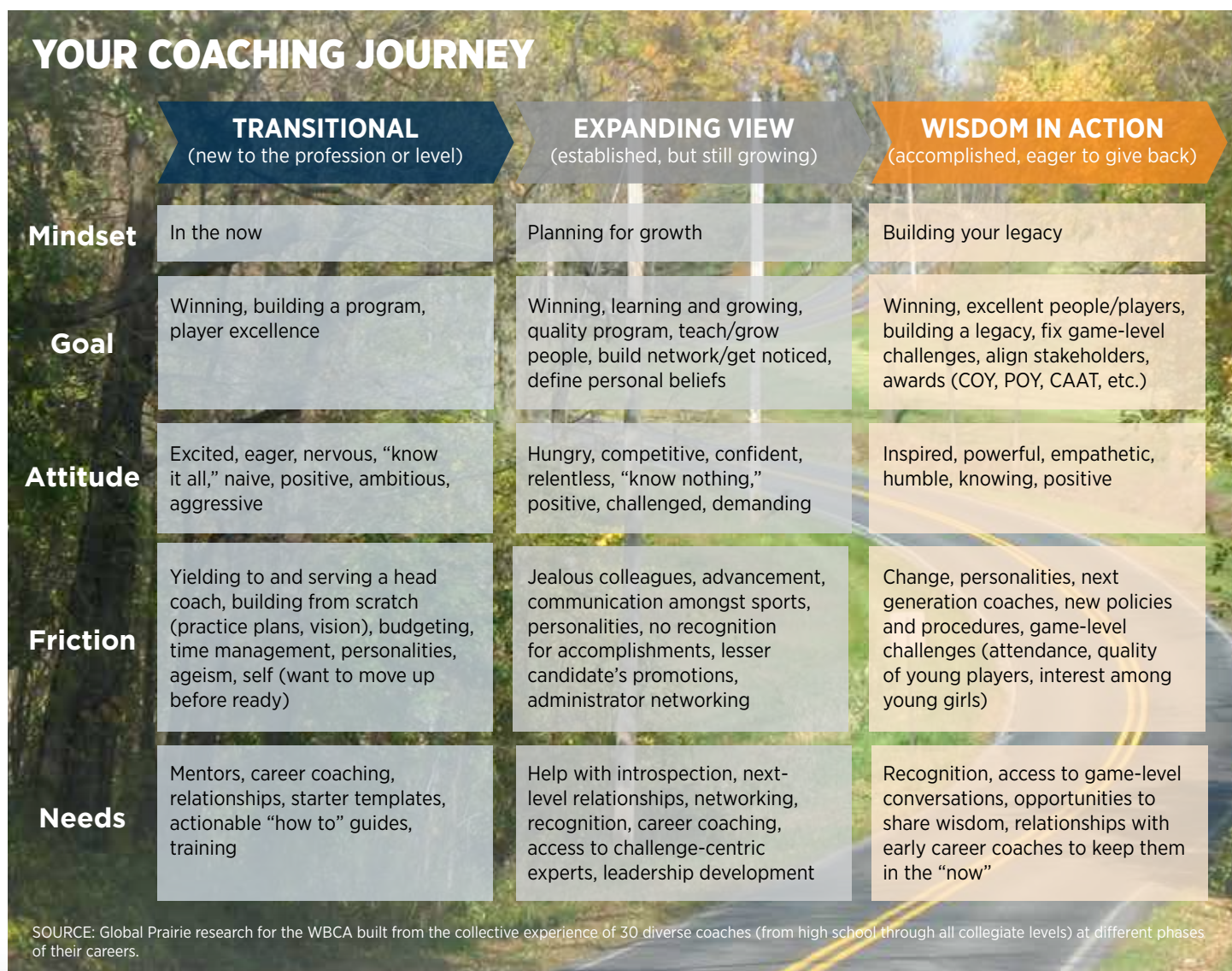
And speaking of Convention, we reimagined it as well, beginning each day with general sessions we called respectively *Ignite! Engage! Excel!*, which featured outstanding keynote speakers with relevant messages that set the tone for the day, an opportunity for us to share with you some important updates about the Association and where it is headed, and during which we honored together the 2015-16 award winners.

Following Convention we began opening up additional channels for members to connect with and learn from each other. And we are developing more targeted programs for coaches at every “mile marker” along their coaching journey.

[The new WBCA.org](#)

The new WBCA website, redesigned and rebuilt from the ground up, offers members a year-round platform for education and sharing.

- An expansive Coaching Library houses hundreds of videos, including WBCA Convention sessions, audio files, and plays and drills all of which are organized by topic and searchable.



THE STORY OF A NEW LOGO

PRIMARY LOGO

The forward slanting letters of this custom typeface suggest advancement and progress.

Blue, retained from the previous logo, evokes feelings of trustworthiness, loyalty, strength, stability, dependability, wisdom, confidence, intelligence and commitment.

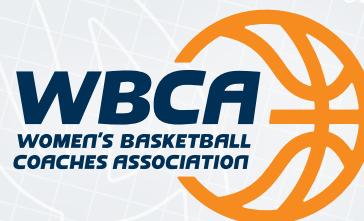
Orange, new to the WBCA color palette, evokes feelings of joy, warmth, enthusiasm, success, health and fun, but it also suggests a call to action. This particular shade of orange is the NCAA's officially designated color for a basketball.



The shadow signifies that the Association, which is its members, is rising together above all challenges.

EXPANDED LOGO

This secondary mark is utilized when the full name of the Association, displayed in the same custom typeface, is preferred.



LOGO LINEAGE



1981 - 1991



1991 - 1998



1998 - 2011



2011 - 2016



2016

- The WBCA blog showcases regular how-to articles from coaches and industry experts, as well as stories about members, all of which are intended to educate and inspire you.
- Coaching toolboxes act as a central place for content for membership segments (assistant coaches, directors of basketball operations, videographers, etc.).

Mentoring and Career Development

During the WBCA Convention in Indianapolis, we launched new sessions aimed at helping young professionals develop their careers and network with experienced coaches and administrators.

- More than 100 coaches participated in Mentoring Madness which put together small groups with an experienced coach for fast-paced

roundtable discussions on program and career management.

- Mock Interviews gave coaches an opportunity to receive critiques by seasoned administrators and head coaches, preparing them for their next job search.
- The WBCA Professional Development Working Group completed a pilot program and announced the creation of the Coach to Coach Mentoring Program that will launch during the 2016-17 season, and in which small groups of coaches will meet monthly to share ideas and confront challenges.

Early-Career Coaches Recognition

We found new ways to showcase the talent and diversity of young coaches and put them front and center before the WBCA membership.

- Thirty Under 30 recognizes coaches in their 20s who have demonstrated a significant potential for leadership and success.
- The WBCA Assistant Coach of the Year Award makes sure that outstanding assistant coaches at every level have an opportunity to be recognized and celebrated by their peers.

Reorganized Staff

We also reorganized the WBCA staff and redistributed office responsibilities to more efficiently and effectively serve you.

- Two new positions have been added to the staff — one dedicated to the development and implementation of educational programming and the other focused on digital media to manage the ever-expanding

Coaching Library and our growing social media presence on Facebook, Twitter, Instagram and Snapchat.

- A third existing position has been re-tasked and will now be primarily responsible for developing content for the new website as well as helping to market the Association and attract new members by sharing the great things now happening.
- Staff members were assigned as liaisons to specific membership divisions and serve as primary and secondary contacts for Conference Captains and member coaches within those respective divisions.

On the Horizon

The upcoming year will see an expansion of online learning, including the new WBCA Webinar Series, a revamped e-newsletter and other e-communications, and online message boards for ongoing discussions.

It has been my life's work to lift up this sport, and I am honored to be playing a role in helping the WBCA write this next chapter in its history — with the help of our devoted staff, leadership and, most importantly, all of you — our members.

This is truly an exciting time to be a WBCA member and a part of these enhancements to our Association's

benefits. These changes are the result of much reflection and a commitment to serve you not just differently, but better.

Best,

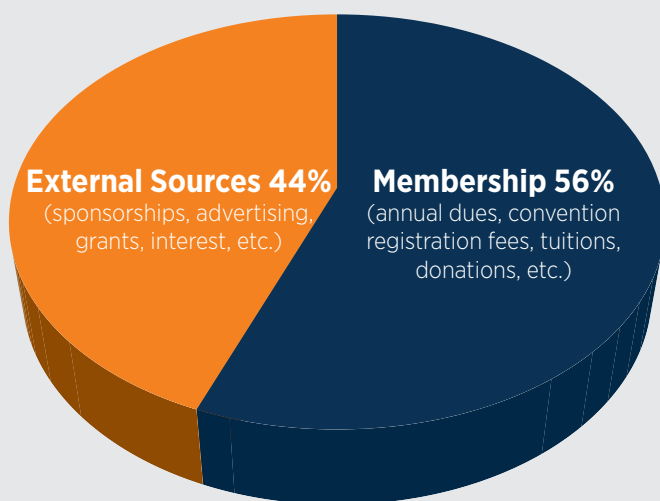


Danielle M. Donehew
Executive Director

2015-16 FINANCIAL REPORT

Revenue

Membership sources, such as annual dues, convention registration fees, tuitions, donations, etc., accounted for more than half of the available \$2.57 million in funds for use during the 2015-16 membership year. The balance came from external sources, such as sponsorships, advertising, grants, interest, etc.

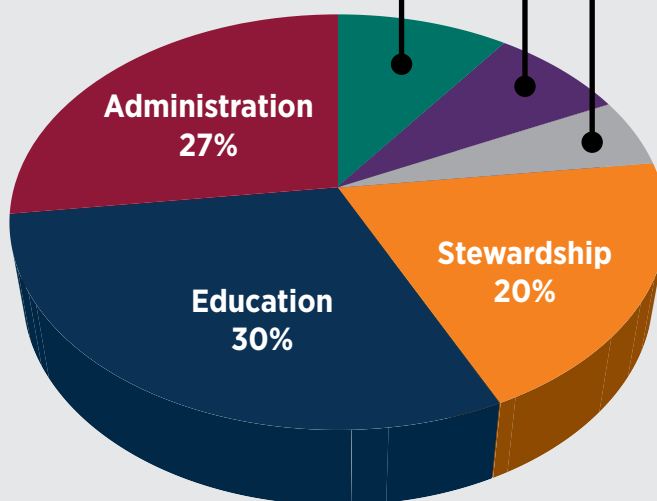


Expenditures

Funding 6%

Advocacy 7%

Membership 10%



Expenditures have been allocated across the Association's strategic areas of emphasis — stewardship (which includes awards programs, special recognition programs and public relations), education, advocacy, membership and funding — as well as general administration (e.g., building & equipment maintenance, insurance, utilities, etc.). Employee salaries have been allocated likewise based on the number of work hours spent in each of the five strategic areas of emphasis.

THE WBCA BOARD

The WBCA Board of Directors determines Association policy, provides guidelines for implementing its programs, and employs an executive director and staff to administer the organization. The WBCA Board is composed of member coaches elected by their peers from each of the six membership divisions, athletic administrators supportive of women’s basketball, and professionals from the public sector who lend their expertise in areas such as finance, marketing and law. The board meets in person twice annually – once during the summer and once in conjunction with the WBCA Convention – and at least once each year by teleconference.

An Executive Committee composed of the association’s officers and three at-large board members acts with the full authority of the board between board meetings. The executive committee reviews, amends and presents to the full board the proposed annual operating budget prepared by the executive director, and also annually evaluates on behalf of the board the performance of the executive director.

(x-denotes Executive Committee member; y-denotes non-voting member; z-denotes term of service ended June 30)



Karen Aston
Head Coach
University of Texas
NCAA Division I Midwest



Courtney Banghart
Head Coach
Princeton University
NCAA Division I East



Anucha Browne
Vice President for
Women’s Basketball
NCAA (y)



Carol Callan
National Team Director
USA Basketball (y)



Claudette Charney
Athletic Administrator
Hillsdale College
NCAA DII Legislative Chair (z)



Tricia Cullop
Head Coach
University of Toledo
NCAA Division I Mideast



Diane Dickman
Managing Director
NCAA DI Governance (y)



Danielle Donehew
Executive Director
WBCA
Secretary (x,y)



Chancellor Dugan
Head Coach
Bellarmine University
NCAA Division II Group I



Rich Ensor
Commissioner
Metro Atlantic Athletic Conf.
Collegiate Commissioners Assoc.



Nikki Fargas
Head Coach
Louisiana State University
NCAA Division I At Large (z)



Lisa Fortier
Head Coach
Gonzaga University
NCAA Division I West



Brandon Harrell
Head Coach
Georgia Highlands College
Junior/Community College



Connie Hurlbut
Deputy Commissioner
Western Athletic Conference
Athletic Administrator (x)



Trish Jones
Principal
eMentor Connect LLC
Public Sector



Chris Kielsmeier
Head Coach
Wayne State College (Neb.)
NCAA Division II/Group II



Mary Klinger
Head Coach
Rutgers Preparatory School
High School



Amanda Levens
Associate Head Coach
Arizona State University
Assistant Coaches



Christy Thomaskutty
Head Coach
Emory University
NCAA DIII Legislative Chair (x)



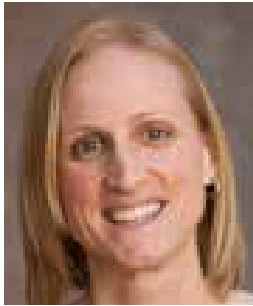
Lacey Lewis
Senior Vice President/Finance
Cox Enterprises
Treasurer (x)



Patricia Manning
Head Coach
Williams College
NCAA Division III At Large



Muffet McGraw
Head Coach
University of Notre Dame
NCAA DI Legislative Chair (x)



Kirsten Moore
Head Coach
Westmont College
NAIA



Martha Pullataz
Professor
Duke
Faculty Athletic Reps (y)



Jennifer Rizzotti
Head Coach
George Washington University
VP/President-Elect (x)



Sue Semrau
Head Coach
Florida State University
Immediate Past President (x)



Mary Beth Spirk
Head Coach
Moravian College
NCAA Division III At Large



Dawn Staley
Head Coach
University of South Carolina
NCAA DI WBB Oversight Comm. (y)



Coquese Washington
Head Coach
Penn State University
President (x)



Stephanie Baron Dollar
Director of Education & Events
sbaron@wbca.org
770-279-8027 ext. 132

Responsibilities:

- Convention planning & logistics
- Educational programming

Contact for:

- NCAA DII and J/CC coaches (primary)

Staff liaison to:

- WBCA Playing Rules & Officiating WG (primary)
- WBCA Diversity & Inclusion Committee (primary)
- WBCA Professional Development WG (primary)
- NCAA DII Conference Captains (primary)



Danielle Donehew
Executive Director
ddonehew@wbca.org
770-279-8027 ext. 122

Responsibilities:

- Oversight of WBCA business, financial and legal affairs, and association programs, operations and office staff
- Strategic partnerships and relationships

Staff liaison to:

- WBCA Board of Directors (primary)
- WBCA Executive Committee (primary)
- WBCA Finance Committee (primary)
- WBCA Leadership Advisory Council (primary)
- WBCA Presidents Advisory Council (primary)
- WBCA Committees WG (primary)
- WBCA Youth WG (primary)

Represents WBCA on:

- Kay Yow Cancer Fund Board of Directors
- NCAA DI WBB Oversight Committee (nonvoting member)
- Naismith Memorial Basketball Hall of Fame Board of Trustees
- Women's Basketball Hall of Fame Board of Directors



Kara Hess
Manager of Education
khess@wbca.org
770-279-8027 ext. 145

Responsibilities:

- Educational programming
- Webinar series
- Convention programming

Contact for:

- J/CC coaches (secondary)

Staff liaison to:

- WBCA Professional Development WG (secondary)
- WBCA Diversity & Inclusion Committee (secondary)



Latasha Lewis
Manager of Marketing Communications
llewis@wbca.org
770-279-8027 ext. 105

Responsibilities:

- Website maintenance and content
- E-communications
- Coach to Coach Mentoring Program

Contact for:

- NCAA DIII coaches (primary)

Staff liaison to:

- WBCA Mentoring & Membership WG (secondary)



Dana Refling
Executive Assistant
drefling@wbca.org
770-279-8027 ext. 122

Responsibilities:

- Administrative assistance to the Executive Director and Chief Operating Officer
- Office manager
- Bookkeeper and accounting support.



Shannon Reynolds
Chief Operating Officer
shannonr@wbca.org
770-279-8027 ext. 118

Responsibilities:

- Day-to-day supervision of office staff and management of business operations

Staff liaison to:

- WBCA Board of Directors (secondary)
- WBCA Executive Committee (secondary)
- WBCA Finance Committee (secondary)
- WBCA Legislation & Governance WG (primary)
- WBCA Presidents Advisory Council (secondary)
- NCAA legislative staffs (primary)

Represents WBCA on:

- NCAA DI WBB Oversight Committee Ad Hoc WG on Recruiting (member)



Heather Sumperl
Manager of Membership & Registration
hsumperl@wbca.org
770-279-8027 ext. 134

Responsibilities:

- New memberships and renewal processes
- Convention registration
- Database administration

Contact for:

- NCAA DIII coaches and alumni (primary)

Staff liaison to:

- NCAA DIII Conference Captains (primary)



Daniella Trujillo
Manager of Events & Awards
dtrujillo@wbca.org
770-279-8027 ext. 110

Responsibilities:

- Administration of awards programs
- Center for Coaching Excellence
- "So You Want To Be A Coach" program
- WBCA Courtside Expo

Contact for:

- NCAA DII coaches (secondary)

Staff liaison to:

- All WBCA awards committees
- NCAA DII Conference Captains (secondary)



Tip Tucker Kendall
Director of Membership Strategy
tkendall@wbca.org
770-279-8027 ext. 106

Responsibilities:

- Membership services and marketing
- Convention registration and marketing
- Member benefits and content strategy

Contact for:

- NCAA DIII, high school and nonscholastic youth coaches; DOBOs, administrators, video coordinators and alumni (primary)

Staff liaison to:

- WBCA Mentoring & Membership WG (primary)
- WBCA Professional Development WG (primary)
- WBCA Leadership Advisory Council (secondary)
- NCAA DIII Conference Captains (secondary)



Jack Watford
Director of Communications
jwatford@wbca.org
770-279-8027 ext. 112

Responsibilities:

- Branding and visual identity
- Messaging and media relations
- Website oversight and maintenance

Primary contact for:

- NCAA DI, NAIA, USCAA, NCCAA and independent college coaches

Staff liaison to:

- WBCA Committees WG (secondary)
- WBCA Legislation & Governance WG (secondary)
- WBCA Youth WG (secondary)
- WBCA NCAA DI Top 25 Coaches Poll Committee
- WBCA NCAA DII Top 25 Coaches Poll Committee



Jeff White
Manager of Digital Media
jwhite@wbca.org
770-279-8027 ext. 111

Responsibilities:

- Social media marketing
- Video content/coaching library
- Online career center

Contact for:

- NCAA DIII, high school and nonscholastic youth coaches; DOBOs, administrators and video coordinators (secondary)

Staff liaison to:

- WBCA NCAA DIII Top 25 Coaches Poll Committee



Whitney Young
Manager of Corporate Relations
wyoung@wbca.org
770-279-8027 ext. 103

Responsibilities:

- Corporate partner relations
- Courtside Expo sales
- WBCA board and committee elections

Contact for:

- NCAA DI coaches (secondary)

Staff liaison to:

- IMG
- NCAA DI Conference Captains (secondary)
- WBCA Board of Directors (secondary)
- WBCA Playing Rules & Officiating WG (secondary)

RECOGNITION

The WBCA recognized 237 member coaches, 334 athletes, 114 teams and three contributors through its extensive awards program during the 2015-16 membership year.

COACH AWARDS

Pat Summitt Trophy presented to the United States Marine Corps/WBCA Coaches of the Year

NCAA Division I

National Coach of the Year

Geno Auriemma, University of Connecticut

Regional Coaches of the Year

Geno Auriemma, University of Connecticut
 Doug Bruno, DePaul University
 Amanda Butler, University of Florida
 Cori Close, University of California-Los Angeles (UCLA)
 Brenda Frese, University of Maryland
 David Magarity, United States Military Academy
 Muffet McGraw, University of Notre Dame
 Kim Mulkey, Baylor University
 Dawn Staley, University of South Carolina
 Charli Turner Thorne, Arizona State University

NCAA Division II

National Coach of the Year

Steve Gomez, Lubbock Christian University

Regional Coaches of the Year

Scott Ballard, Winona State University
 Mark Campbell, Union University
 Corey Fox, Limestone College
 AnnMarie Gilbert, Virginia Union University
 Kristen Gillespie, Lewis University
 Steve Gomez, Lubbock Christian University
 Kristen Hutchison, American International College
 Ryan McCarthy, University of Alaska-Anchorage

NCAA Division III

National Coach of the Year

Scott Hemer, State University of New York at Geneseo

Regional Coaches of the Year

Anthony Ewing, University of New England
 Nancy Fahey, Washington University (Missouri)
 Stephanie Flamini, Guilford College
 Karin Harvey, Montclair State University
 Scott Hemer, State University of New York at Geneseo
 Janice Luck, Albright College
 Michael Meek, George Fox University
 Brian Morehouse, Hope College

NAIA

National Coach of the Year

Chris Minner, Our Lady of the Lake University

Regional Coaches of the Year

Joanna Bernabei-McNamee, University of Pikeville
 Jason Christensen, Dakota Wesleyan University
 Chris Minner, Our Lady of the Lake University
 Kirsten Moore, Westmont College
 Chris Nelson, Bethel University (Tennessee)
 Lauren Stamatis, Olivet Nazarene University

Junior/Community College

National Coach of the Year

Ben Conrad, Johnson County Community College

Regional Coaches of the Year

Jeff Allen, Collin College
 Cal Cochran, Daytona State College
 Ben Conrad, Johnson County Community College
 Misty Opat, Rock Valley College
 Randy Rogers, College of Southern Idaho

High School

National Coach of the Year

Tom Gonsalves, St. Mary's High School (Stockton, California)

Regional Coaches of the Year

Tom Gonsalves, St. Mary's High School (Stockton, California)
 Steve Ingram, Olathe South High School (Olathe, Kansas)
 Aisha Kennedy, St. Francis High School (Alpharetta, Georgia)
 Ashley Nance, Conway High School (Conway, Arkansas)
 Fred Priester, Oakton High School (Fairfax, Virginia)
 Sheila Seymore-Pennick, Ribault High School (Jacksonville, Florida)
 Stacey Stroman, Dekaney High School (Houston, Texas)
 Josh Ulitzky, Grandview High School (Aurora, Colorado)
 William Wolf, Cumberland Valley High School (Mechanicsburg, Pennsylvania)

2016 United States Marine Corps/WBCA National Coaches of the Year



Geno Auriemma
 Connecticut
 NCAA Division I



Steve Gomez
 Lubbock Christian
 NCAA Division II



Scott Hemer
 SUNY-Geneseo
 NCAA Division III



Chris Minner
 Our Lady of the Lake
 NAIA



Ben Conrad
 Johnson County
 Jr./Comm. College



Tom Gonzalves
 St. Mary's (CA)
 High School

Carol Eckman Award

Ginger Colvin, Campbellsville University

Spalding/Maggie Dixon NCAA Division I Rookie Coach of the Year

Joni Taylor, University of Georgia

WBCA Victory Club

900 wins

Marcia Pinder, Dillard High School (1/12/16)

800 wins

Muffet McGraw, University of Notre Dame (1/3/16)

700 wins

Gary Blair, Texas A&M University (11/27/15)
 Joan Bonvicini, Seattle University (1/9/16)
 Sal Buscaglia, Robert Morris University (1/4/16)
 Nancy Fahey, Washington University, Missouri (1/17/16)
 Tanya Johnson, Zion-Benton High School (1/4/16)
 Tom Shirley, Philadelphia University (2/6/16)

600 wins

Doug Bruno, DePaul University (1/15/16)
 Bruce Consier, Hyde Park Schools (12/8/15)
 Ron Jones, Midland College (1/28/16)
 Sue Phillips, Archbishop Mitty High School (1/23/16)
 Karen Self, Seton Catholic Preparatory (11/27/15)
 Jay Trousdale, Poway High School (12/10/15)

500 wins

Jane Albright, University of Nevada (1/27/16)
 Mike Brandt, University of South Carolina-Aiken (11/17/15)
 Carol Halford, Williams Baptist College (1/28/16)
 Dave Magarity, United States Military Academy (2/11/16)
 Vic Mitchell, Shorter University (3/1/16)
 Brian Morehouse, Hope College (2/6/16)
 Susan Summons, Miami Dade College-Kendall (12/12/15)
 Lynn Ullom, West Liberty University (11/23/15)
 Teresa Waters, River Hill High School (12/29/15)
 John Wethington, Lindsey Wilson College (11/10/15)
 Carol Wilson, Lincoln College (11/16/15)



Ginger Colvin
Campbellsville



Joni Taylor
Georgia

400 wins

Denise Bierly, Eastern Connecticut State University (12/29/15)
 Bo Browder, Xavier University of Louisiana (1/2/16)
 Brenda Frese, University of Maryland (11/20/15)
 Carey Green, Liberty University (2/27/16)
 Robert Hallberg, Saint Xavier University (12/28/15)
 Keith Mondillo, Gwynedd Mercy College (1/4/16)
 Charli Turner Thorne, Arizona State University (12/14/15)

300 wins

Deena Applebury, University of Mary Washington (2/27/16)
 Carla Berube, Tufts University (3/19/16)
 Matt Borchert, Solano Community College (2/4/16)
 Trisha Brown, Stonehill College (2/6/16)
 Mike Carey, West Virginia University (11/24/15)
 Tricia Cullop, University of Toledo (3/2/16)
 Sharon Dawley, University of Massachusetts (11/15/15)
 Bunky Harkleroad, Sacramento State University (1/14/16)
 Trent May, Grand Canyon University (1/19/16)
 Ron Rohn, Muhlenberg College (2/11/16)
 Andrienne Shibles, Bowdoin College (1/14/16)

200 wins

Cynthia Cooper-Dyke, University of Southern California (1/4/16)
 Anthony Ewing, University of New England (2/20/16)
 LeAnn Freeland, Nova Southeastern University (1/16/16)
 Juli Fulks, Transylvania University (2/13/16)
 Kellie Harper, Missouri State University (11/17/15)
 Karin Harvey, Montclair State University (1/30/16)
 Scott Hyland, Hill College (1/20/16)
 Alisa Kintner, Widener University (1/22/16)
 Alex Lang, Brooklyn College (1/5/16)
 Felisha Legette-Jack, University of Buffalo (2/4/16)
 Chris Mouat, Montana State University-Northern (12/29/15)
 Brady Sallee, Ball State University (1/16/16)
 Wendy Schuller, Eastern Washington University (11/9/15)
 Polly Thomason, University of Texas at Dallas (2/6/16)
 Kevin Woodin, Montana State University-Billings (1/16/16)

Inaugural WBCA Assistant Coach of the Year

NCAA Division I

Niele Ivey, University of Notre Dame

NCAA Division II

Jessie Ivey, University of West Florida

NCAA Division III

Rob Slopek, Stevenson University

Inaugural WBCA Assistant Coaches of the Year



Niele Ivey
Notre Dame
NCAA Division I



Jessie Ivey
West Florida
NCAA Division II



Rob Slopek
Stevenson
NCAA Division III



Beck Flanagan
Loyola (New Orleans)
NAIA



Nakia DeBlanc
Daytona State College
Jr./Comm. College



Daniel Michalak
Platt HS (Conn.)
High School

Inaugural WBCA Thirty Under 30 Honorees



MacKenzie Argens
Cal Poly



Amy Beggin
New Mexico



Gayle Coats
Wake Forest



Melissa D'Amico
Yale



Courtney Davidson
Radford



Maisie Elston
Birmingham Southern



David Foley
Luther



Alysa Horn
Alaska Anchorage



Aarika Hughes
New Mexico State



Ashley Hutchcraft-Nance
Conway High School



Jessie Ivey
West Florida



Misha Jackson
Emory



Vanessa Keeler-Johnson
Minn. St. Moorhead



Kelsey Keizer
Southwest Baptist



Jessica Keller
Columbia College



Crystal Kelly
Bellarmine



Kate Lynch
Southern Conn. St.



Joy McCorvey
Michigan



Tamela McCorvey
NW Florida State



Katherine Menendez
Colgate



Sahar Nusseibeh
Bowling Green



Kari Pickens
Ashland



Alex Richey
Oglethorpe



Jon Silver
Vermont



Joseph Silvestri
Central Florida



Stephanie Stevens
Gallaudet



Kyron Stokes
Oral Roberts



Adam Tandez
Truman State



Lynsey Warren
Ohio Dominican



Ana Wurtz
Winona State

NAIA

Beck Flanagan, Loyola University (New Orleans)

Junior/Community College

Nakia DeBlanc, Daytona State College

High School

Daniel Michalak, Platt High School (Meriden, Connecticut)

Inaugural WBCA Thirty Under 30 Honorees

MacKenzie Argens, California Poly State University

Amy Beggin, University of New Mexico

Gayle Coats, Wake Forest University

Melissa D'Amico, Yale University

Courtney Davidson, Radford University

Maisie Elston, Birmingham Southern College

David Foley, Luther College

Alysa Horn, University of Alaska Anchorage

Aarika Hughes, New Mexico State University

Ashley Hutchcraft-Nance, Conway High School

Jessie Ivey, University of West Florida

Misha Jackson, Emory University

Vanessa Keeler-Johnson, Minnesota State University-Moorhead

Kelsey Keizer, Southwest Baptist University

Jessica Keller, Columbia College (Missouri)

Crystal Kelly, Bellarmine University

Kate Lynch, Southern Connecticut State University

Joy McCorvey, University of Michigan

Tamela McCorvey, Northwest Florida State College

Katherine Menendez, Colgate University

Sahar Nusseibeh, Bowling Green State University
 Kari Pickens, Ashland University
 Alex Richey, Oglethorpe University
 Jon Silver, University of Vermont
 Joseph Silvestri, University of Central Florida
 Stephanie Stevens, Gallaudet University
 Kyrón Stokes, Oral Roberts University
 Adam Tandez, Truman State University
 Lynsey Warren, Ohio Dominican University
 Ana Wurtz, Winona State University

Rachel Banham, University of Minnesota
 Imani Boyette, University of Texas
 Sophie Brunner, Arizona State University
 Adut Bulgak, Florida State University
 Madison Cable, University of Notre Dame
 Alaina Coates, University of South Carolina
 Nia Coffey, Northwestern University
 Brittany Crain, University of California, Riverside
 Kim Demmings, Wright State University
 Makayla Epps, University of Kentucky
 Temi Fagbenle, University of Southern California
 Katelynn Flaherty, University of Michigan
 Nathalie Fontaine, Ball State University
 Jordan Frericks, University of Missouri
 Danaejah Grant, St. John's University (New York)
 Ruth Hamblin, Oregon State University
 Myisha Hines-Allen, University of Louisville
 Bria Holmes, West Virginia University
 Chanise Jenkins, DePaul University
 Niya Johnson, Baylor University
 Alexis Jones, Baylor University
 Brionna Jones, University of Maryland
 Jonquel Jones, George Washington University
 Brittney Martin, Oklahoma State University
 Kelsey Minato, United States Military Academy (Army)
 Tiffany Mitchell, University of South Carolina
 Mariya Moore, University of Louisville
 Adrienne Motley, University of Miami (Florida)
 Aerial Powers, Michigan State University
 Shereesha Richards, University at Albany
 April Robinson, Duquesne University
 Leticia Romero, Florida State University
 Azurá Stevens, Duke University
 Shakayla Thomas, Florida State University
 Victoria Vivians, Mississippi State University
 Courtney Walker, Texas A&M University

ATHLETE AWARDS

WBCA Coaches' All-America

NCAA Division I

The Wade Trophy Winner (Player of the Year)

Breanna Stewart, University of Connecticut

Coaches' All-America Team

Nina Davis, Baylor University
 Moriah Jefferson, University of Connecticut
 Kelsey Mitchell, Ohio State University
 Kelsey Plum, University of Washington
 Breanna Stewart, University of Connecticut
 Morgan Tuck, University of Connecticut
 Brianna Turner, University of Notre Dame
 Jamie Weisner, Oregon State University
 A'ja Wilson, University of South Carolina
 Courtney Williams, University of South Florida

Honorable Mention

Lindsay Allen, University of Notre Dame
 Jillian Alleyne, University of Oregon
 Ameryst Alston, Ohio State University
 Kristine Anigwe, University of California, Berkeley

2016 WBCA NCAA Division I Coaches' All-America



Nina Davis
Baylor



Moriah Jefferson
Connecticut



Kelsey Mitchell
Ohio State



Kelsey Plum
Washington



Breanna Stewart
Connecticut



Morgan Tuck
Connecticut



Brianna Turner
Notre Dame



Jamie Weisner
Oregon State



Courtney Williams
South Florida



A'ja Wilson
South Carolina

2016 WBCA NCAA Division II Coaches' All-America



Mariyah Brawner-Henley
Lewis



Jennifer Gemma
Bentley



Miki Glenn
California (PA)



Nicole Hampton
Lubbock Christian



LaQuinta Jefferson
Missouri Western St.



Kiana Johnson
Virginia Union



Jasmine Kearse
Limestone



Michelle Mitchell
Columbus State



Chelsey Rhodes
Delta State



Farrah Shokoor
UC San Diego

Shatori Walker-Kimbrough, University of Maryland
Aaliyah Whiteside, Georgia Institute of Technology (Georgia Tech)

NCAA Division II

Player of the Year

Kiana Johnson, Virginia Union University

Coaches' All-America Team

Mariyah Brawner-Henley, Lewis University
Jennifer Gemma, Bentley University
Miki Glenn, California University of Pennsylvania
Nicole Hampton, Lubbock Christian University
LaQuinta Jefferson, Missouri Western State University
Kiana Johnson, Virginia Union University
Jasmine Kearse, Limestone College
Michelle Mitchell, Columbus State University
Chelsey Rhodes, Delta State University
Farrah Shokoor, University of California, San Diego

Honorable Mention

Fatima Adams, Arkansas Tech University
Taylor Adams, Shorter University
Vandell Andrade, Le Moyne College
Annie Armstrong, Drury University
Brianna Bishop, American International College
Mikaela Burgess, Pittsburg State University
Tiara Caldwell, Union University
Andrea Daugherty, Ashland University
Brittney Dietz, University of Mary
Dallas Ely, Westchester University of Pennsylvania
Alexis Foley, Winona State University
Morgan Griffith, Shippensburg University of Pennsylvania
Kelly Hardeman, Azusa Pacific University
Kailee Howe, West Liberty University
Kelsey Hutchins, University of North Georgia
Kariel Hutt, Augusta University
Cierra Jackson, University of North Georgia
Monay Lee, California State University, Dominguez Hills
Katrina Littlepage, University of West Georgia
Keiona Mathews, Texas A&M International University

Cassidy Mihalko, California Baptist University
Megan Mullings, University of Alaska Anchorage
Michaela Neuhaus, West Texas A&M University
Jessica Prieto, Texas A&M International University
Dina Ragab, New York Institute of Technology
Laina Snyder, Ashland University
McKenzie Stanford, Oklahoma Christian University
Erin Walsh, Lee University
Emily Wendling, Saginaw Valley State University
Bria Young, Philadelphia University

NCAA Division III

Player of the Year

Sydney Moss, Thomas More College

Coaches' All-America Team

Shannon Brady, Bowdoin College
Shalette Brown, Fairleigh Dickinson University, Florham
Kelecia Harris, Albright College
Kaitlin Langer, University of St. Thomas
Maura McAfee, Hope College
KC McConnell, Whitworth University
Sydney Moss, Thomas More College
Lisa Murphy, Carnegie Mellon University
Michela North, Tufts University
Michelle Obach, University of Texas at Tyler

Honorable Mention

Eireann Anastasi, Delaware Valley University
Marajah Bacon, Kean University
Justine Benner, George Fox University
Annie Bova, University of Mount Union
Danyel Bradley, Howard Payne University
Brianna Comden, University of Mary Washington
Megan Dawe, New York University
Holly Denfeld, Milwaukee School of Engineering
Kelly Donnelly, Skidmore College
Ali Doswell, Amherst College
Marley Giddins, Amherst College
Jordan Holmes, Denison University

2016 WBCA NCAA Division III Coaches' All-America



Shannon Brady
Bowdoin



Shalette Brown
FDU-Florham



Kelecia Harris
Albright



Kaitlin Langer
St. Thomas (MN)



Maura McAfee
Hope



KC McConnell
Whitworth



Sydney Moss
Thomas More



Lisa Murphy
Carnegie Mellon



Michela North
Tufts



Michelle Obach
Texas-Tyler

2016 WBCA NAIA Coaches' All-America



Lindsey Burd
Campbellsville



Jatoria Carter
Auburn-Montgomery



Taleeah Cross
Freed-Hardeman



Natalee Faupel
Montana-Northern



Whitney Gathright
Xavier (LA)



Abbey Hengesbach
Olivet Nazarene



Alex Kneeland
Mount Marty



Kara Krolicki
Saint Xavier



Melissa Norman
Vanguard



Daniela Wallen
Oklahoma City

Caitlin Kriesel-Bigler, Hendrix College
 Alexandra Leslie, University of Rochester
 Moran Lonning, Luther College
 Amanda Martinez, Washington University
 Kate Matthews, Rowan University
 Katie McDaniels, Wheaton College (Illinois)
 Allison McKenna, State University of New York at Geneseo
 Allie Miceli, University of Wisconsin-Stevens Point
 Sarah Payonk, University of Scranton
 Lytेशia Price, State University College at Oneonta
 Mackenzie Puckett, Maryville College (Tennessee)
 Jill Ritrosky, Eastern Connecticut State University

Taylor Schmidt, University of Wisconsin, Oshkosh
 Kaitlin Schullstrom, Rowan University
 Emily Sheldon, University of Puget Sound
 Sara Tarbert, Stevenson University
 Brandi Vallely, Muhlenberg College
 Anais Weatherly, Guilford College

NAIA

Player of the Year

Jatoria Carter, Auburn University at Montgomery

Coaches' All-America Team

Lindsey Burd, Campbellsville University

Jatoria Carter, Auburn University at Montgomery
 Taleeah Cross, Freed-Hardeman University
 Natalee Faupel, Montana State University-Northern
 Whitney Gathright, Xavier University of Louisiana
 Abbey Hengesbach, Olivet Nazarene University
 Alex Kneeland, Mount Marty College
 Kara Krolicki, Saint Xavier University
 Melissa Norman, Vanguard University
 Daniela Wallen, Oklahoma City University

Honorable Mention

Petrolina Chilaka, Columbia College (Missouri)
 Kassidy De Jong, Northwestern College
 Samantha Doucette, Vanguard University
 Jessica Foster, Georgetown College
 Emily Fox, Campbellsville University
 Sydney Greiner, St. Ambrose University
 Taylor Hamilton, Our Lady of the Lake University
 Erin Legel, University of Great Falls
 Aundrea Matchen, University of Pikeville
 Caelyn Orlandi, Lewis-Clark State College
 Miranda Palmer, Huntington University
 Alyssa Ramos, Southeastern University
 Charnelle Reed, University of St. Francis
 Chanel Roberts, Lindsey Wilson College
 Ashley Romig, Ottawa University
 Chayla Rutledge, Benedictine College
 Christin Strawbridge, Southeastern University
 Brandy Uchtman, College of the Ozarks
 Martessia Williams, Bethel University (Tennessee)
 Hannah Wisdom, College of the Ozarks

Junior/Community College

Player of the Year

Kristina King, Gulf Coast State College

Coaches' All-America Team

Audrey-Ann Caron-Goudreau, Gulf Coast State College

Jemia Carpenter, Illinois Central College
 Nachalie Dejesus, Miami-Dade College
 Autumn Jones, Moberly Area Community College
 Kristina King, Gulf Coast State College
 Sawyer Kluge, Umpqua Community College
 Sara Lytle, Northwest Mississippi Community College
 Caylinne Martin, McLennan Community College
 De'Angela Mathis, Florida State College at Jacksonville
 Erica Nelson, Johnson County Community College

Honorable Mention

Mikayla Blount, Temple College
 Kayla Carter, Georgia Highlands College
 Samia Carter, Cincinnati State Technical & Community College
 Jordan Coleman, Irvine Valley College
 Kamiron Luptak, Fort Scott Community College
 LaNeique Nealey, Angelina College
 Demi Read, Frank Phillips College
 Rachel Slaney, Madison College
 Tayla Taylor, McLennan Community College
 Merveilles Tshitenge, Redlands Community College
 Romekia Wallace, Moberly Area Community College

High School

Player of the Year

Lauren Cox, Flower Mound High School (Texas)

Coaches' All-America Team

Erin Boley, Elizabethtown High School (Kentucky)
 Kaila Charles, Riverdale Baptist High School (Maryland)
 Natalie Chou, Plano West High School (Texas)
 Lauren Cox, Flower Mound High School (Texas)
 Crystal Dangerfield, Blackman High School (Tennessee)
 Joyner Holmes, Cedar Hill High School (Texas)
 Sabrina Ionescu, Miramonte High School (California)
 Tori McCoy, The High School of St. Thomas More (Illinois)
 Leaonna Odom, Chaminade College Prep (California)
 Destiny Slocum, Mountain View High School (Idaho)

2016 WBCA Junior/Community College Coaches' All-America



Audrey-Ann Caron-Goudreau
Gulf Coast



Jemia Carpenter
Illinois Central



Nachalie Dejesus
Miami-Dade



Autumn Jones
Moberly



Kristina King
Gulf Coast



Sawyer Kluge
Umpqua



Sara Lytle
NW Mississippi



Caylinne Martin
McLennan



De'Angela Mathis
Florida-Jacksonville



Erica Nelson
Johnson County

2016 WBCA High School Coaches' All-America



Erin Boley
Elizabethtown (KY)



Kaila Charles
Riverdale Baptist (MD)



Natalie Chou
Plano West (TX)



Lauren Cox
Flower Mound (TX)



Crystal Dangerfield
Blackman (TN)



Joyner Holmes
Cedar Hill (TX)



Sabrina Ionescu
Miramonte (CA)



Tori McCoy
St. Thomas More (IL)



Leonna Odom
Chaminade Prep (CA)



Destiny Slocum
Mountain View (ID)

Honorable Mention

Mi'Cole Cayton, St. Mary's High School (California)
 Nicole Ekhomu, Joliet Catholic Academy (Illinois)
 Nadia Fingall, Choctawhatchee High School (Florida)
 A'Tyanna Gauden, Sumter County High School (Georgia)
 Ae'Rianna Harris, Lawrence North High School (Indiana)
 Valerie Higgins, Chaminade College Prep (California)
 Ciera Johnson, Duncanville High School (Texas)
 Kiara Lewis, Whitney Young High School (Illinois)
 Nancy Mulkey, Cypress Woods High School (Texas)
 Mikayla Pivec, Lynnwood High School (Washington)
 Amber Ramirez, Karen Wagner High School (Texas)
 Ally Rosenblum, Mater Dei High School (California)
 Kylee Shook, Mesa Ridge High School (Colorado)
 Jenna Staiti, West Forsyth High School (Georgia)
 Alecia Sutton, Parkway North High School (Missouri)
 Dominique Toussaint, Christ the King High School (New York)
 Jada Underwood, Dr. John Horn High School (Texas)
 Jasmine Walker, Jefferson Davis High School (Alabama)
 Blair Watson, Nutley High School (New Jersey)
 Jackie Young, Princeton Community High School (Indiana)

Allstate WBCA Good Works Team®

NCAA Division I

Taylor Brown, George Mason University
 Stephanie Davison, University of Northern Iowa
 Danielle Rodriguez, University of Utah
 Katarina Vuckovic, Georgia Institute of Technology (Georgia Tech)
 Cortnee Walton, University of Louisville

NCAA DII, NCAA DIII, NAIA

Laramie Becker, University of Nebraska at Kearney
 Deanna Busse, St. Ambrose University
 Alexis Murphy, Nova Southeastern University
 Kaitlin Phillips, Loras College
 Karlie Storkson, Westmont College

WBCA NCAA Division I Defensive Player of the Year

Moriah Jefferson, University of Connecticut

Nancy Lieberman Award

Moriah Jefferson, University of Connecticut

Charles T. Stoner Law Scholarship

Stephanie Haas, Florida Gulf Coast University

Inaugural MaxPreps/WBCA High School Players of the Week

Week ending December 6, 2015

Evie Perez, Miss Porter's High School (Farmington, Connecticut)
 Liz Millea, Cooperstown High School (Cooperstown, New York)
 Emily Maupin, Covenant High School (Charlottesville, Virginia)
 Dana Evans, Gary West Side High School (Gary, Indiana)

Kaylie Rothdiener, Bolivar High School (Bolivar, Missouri)
 Tontyana Sanders, Connally High School (Waco, Texas)
 Desirae Gonzalez, Kingman High School (Kingman, Arizona)
 Sierra Campisano, Torrey Pines High School (San Diego, California)
 Whitney Creech, Jenkins High School (Jenkins, Kentucky)

Week ending December 13, 2015

Lexi Kimball, Greens Farms Academy (Greens Farms, Connecticut)
 Holly Edwards, Teays Valley Christian High School (Ocracoke, North Carolina)
 Sydney Austin, Ocracoke High School (Charlottesville, Virginia)
 Jackie Young, Princeton High School (Princeton, Indiana)
 Rylee Nudell, Maple Valley High School (Tower City, North Dakota)



Moriah Jefferson
Connecticut



Stephanie Haas
Florida Gulf Coast

2016 Allstate WBCA Good Works Team®



Taylor Brown
George Mason
NCAA Division I



Stephanie Davison
Northern Iowa
NCAA Division I



Danielle Rodriguez
Utah
NCAA Division I



Katarina Vuckovic
Georgia Tech
NCAA Division I



Cortnee Walton
Louisville
NCAA Division I



Laramey Becker
Nebraska-Kearney
NCAA Division II



Deanna Busse
St. Ambrose
NAIA



Alexis Murphy
Nova Southeastern
NCAA Division II



Kaitlin Phillips
Loras
NCAA Division III



Karlie Storkson
Westmont
NAIA

Jordyn Lewis, Ramah High School (Ramah, New Mexico)
Desirae Gonzalez, Kingman High School (Kingman, Arizona)
Destiny Littleton, Bishop's High School (La Jolla, California)
Whitney Creech, Jenkins High School (Jenkins, Kentucky)

Week ending December 20, 2015

Sami Ashton, Morgan High School (Clinton, Connecticut)
Kayley Kovac, Jim Thorpe High School (Jim Thorpe, Pennsylvania)
Rhianna Council, Northern High School (Durham, North Carolina)
DeAnn Kauffman, Union High School (Modoc, Indiana)
Rylee Nudell, Maple Valley High School (Tower City, North Dakota)
Myah Taylor, Olive Branch High School (Olive Branch, Mississippi)
Taylor Chavez, Valley Vista High School (Surprise, Arizona)
Destiny Littleton, Bishop's High School (La Jolla, California)
Hannah Roney, Middleburg High School (Middleburg, Florida)

Week ending December 27, 2015

Desiree Elmore, Capital Preparatory Magnet School (Hartford, Connecticut)
Cali Konek, Imani Christian Academy (Pittsburgh, Pennsylvania)
Zaria Wright, Concord First Assembly Academy (Concord, North Carolina)
Jackie Young, Princeton High School (Princeton, Indiana)
Morgan Allred, Ash Grove High School (Ash Grove, Missouri)
Kaitlyn Thompson, Cleveland High School (Cleveland, Mississippi)
Bryce Nixon, Arcadia High School (Phoenix, Arizona)
Amber Melgoza, Santa Barbara High School (Santa Barbara, California)
Whitney Creech, Jenkins High School (Jenkins, Kentucky)

Week ending January 3, 2016

Megan Foley, Mystic Valley Regional High School (Malden, Massachusetts)
Cali Konek, Imani Christian Academy (Pittsburgh, Pennsylvania)
Jo Snow, Mount Airy High School (Mount Airy, North Carolina)

Morgan Sherwood, Charleston High School (Charleston, Illinois)
Payton Brotzki, Platteview High School (Springfield, Nebraska)
Tonyana Sanders, Connally High School (Waco, Texas)
Makenna Merrell, Duncan High School (Duncan, Arizona)
Destiny Littleton, Bishop's High School (La Jolla, California)
Brittany Davis, Greenville High School (Greenville, Georgia)

Week ending January 10, 2016

Jess Larsh, Bolton High School (Bolton, Connecticut)
Sabrina Defreeze, Dwight Morrow High School (Englewood, New Jersey)
Lexi Mercer, Rosewood High School (Goldsboro, North Carolina)
Cameron Onken, Lafayette Central Catholic School (Lafayette, Indiana)
Jacy Bolton, Drexel High School (Drexel, Missouri)
Regan Britt, Walnut High School (Walnut, Mississippi)
Mariah Leary, Phoenix Christian High School (Phoenix, Arizona)
Lillian Olson, Sacramento Waldorf School (Fair Oaks, California)
Jameica Cobb, Madison County High School (Madison, Florida)

Week ending January 17, 2016

Shaquana Edwards, Weaver High School (Hartford, Connecticut)
Aubrey Griffin, Ossining High School (Ossining, New York)
Emily Marie Conroe, Fairfax HomeSchool (Fairfax, Virginia)
Kristen Spolyar, Lebanon High School (Lebanon, Indiana)
Josie Perez, Gordon-Rushville High School (Gordon, Nebraska)
Cassie Vickery, Tularosa High School (Tularosa, New Mexico)
Liz Eaton, Maple Mountain High School (Spanish Fork, Utah)
Terrin Sullivan, Middle College High School (Los Angeles, California)
Alexis Gordon, Covenant Christian High School (Palm Bay, Florida)

Week ending January 24, 2016

Jillian Webber, Andover High School (Andover, Massachusetts)
Karson Swogger, Bellwood-Antis High School (Bellwood, Pennsylvania)

Rachel Ruderman, North Carolina School of Science & Math (Durham, North Carolina)
 Jayla Scaife, Muncie Central High School (Muncie, Indiana)
 Amanda Hansen, West Point-Beemer High School (West Point, Nebraska)
 Nykki Benally, Piedra Vista High School (Farmington, New Mexico)
 Lindsey Vanallen, Mequite High School (Gilbert, Arizona)
 Alessandra Aguirre, Bishop's High School (La Jolla, California)
 Kobi Thornton, Randolph-Clay High School (Cuthbert, Georgia)

Week ending January 31, 2016

Lexi Kimball, Greens Farms Academy (Greens Farms, Connecticut)
 Kayla Agentowicz, Lakeland High School (Jermyn, Pennsylvania)
 Latrina Gatling, Jones Senior High School (Trenton, North Carolina)
 Mason VanHouten, Fort Wayne Canterbury High School (Fort Wayne, Indiana)
 Takayla Gunter, Tuscumbia High School (Tuscumbia, Missouri)
 Eryka Sidney, Wheatley High School (Houston, Texas)
 Alicia Reyes, Pueblo High School (Tucson, Arizona)
 Kayla Washington, Cajon High School (San Bernardino, California)
 Teiyahna Hutchinson, Port St. Joe High School (Port St. Joe, Florida)

Week ending February 7, 2016

Angelique Rodriguez, Capital Prep (Hartford, Connecticut)
 Kyla Irwin, State College (State College, Pennsylvania)
 Allana Stewart, Mountain Island Charter (Mt. Holly, North Carolina)
 Taya Andrews, Fort Wayne Bishop Dwenger (Fort Wayne, Indiana)
 Lexie Black, Valley High School (Caledonia, Missouri)
 Jordyn Lewis, Ramah High School (Ramah, New Mexico)
 Daisia Fox, Santa Rita High School (Tucson, Arizona)
 Antania' Watkins, Arroyo Valley High School (San Bernardino, California)
 Erin Boley, Elizabethtown High School (Elizabethtown, Kentucky)

Week ending February 14, 2016

Shaquana Edwards, Weaver High School (Hartford, Connecticut)
 Avery Chance, Fairton Christian Center & Academy (Fairton, New Jersey)
 Danasia Roberts, Washington High School (Princess Anne, Maryland)
 Renee Stimpert, Crestview High School (Ashland, Ohio)
 Dawn Klabenes, Chambers/Wheeler Central High School (Chambers, Nebraska)
 Tamia Stinson, Hattiesburg High School (Hattiesburg, Mississippi)
 Janie McRae, Shepherd High School (Shepherd, Montana)
 Sierra Campisano, Torrey Pines High School (San Diego, California)
 Elexia Evans, Greensboro High School (Greensboro, Alabama)

Week ending February 21, 2016

Hailey Conley, Norwich Free Academy (Norwich, Connecticut)
 Kirsten Doleman, Jefferson High School (Shenandoah Junction, West Virginia)
 Lexi Mercer, Rosewood High School (Goldsboro, North Carolina)
 Emily Patton, Upper Scioto Valley High School (McGuffey, Ohio)
 Kourtney Shipley, Bradleyville High School (Bradleyville, Missouri)
 Claire Golding, Tupelo Christian Prep (Belden, Mississippi)
 Destiny Slocum, Mountain View High School (Meridian, Idaho)
 Stephanie Umeh, Notre Dame Academy (Los Angeles, California)
 Caitlyn Yost, Forrest High School (Chapel Hill, Tennessee)

Week ending February 28, 2016

Desiree Elmore, Capital Prep High School (Hartford, Connecticut)
 Madison May, PikeView High School (Princeton, West Virginia)
 Tyona Moses, Goldsboro High School (Goldsboro, North Carolina)

Kylee Leffew, Colonial Christian High School (Indianapolis, Indiana)
 Emma Wolf, Buffalo High School (Buffalo, Missouri)
 Calveion Landrum, La Vega High School (Waco, Texas)
 Najiyah Pack, South Mountain High School (Phoenix, Arizona)
 Dawnyel Lair, Price High School (Los Angeles, California)
 Jada Lewis, McEachern High School (Powder Springs, Georgia)

Week ending March 6, 2016

Katherine Surette, University Park High School (Worcester, Massachusetts)
 Shadeen Samuels, Ossining High School (Ossining, New York)
 Anissa Rivera, Forestville High School (Forestville, Maryland)
 Morgan Villemure, Flat Rock High School (Flat Rock, Michigan)
 Shandra Farmer, St. Cecilia High School (Hastings, Nebraska)
 Savannah Jones, St. Martin High School (Ocean Springs, Mississippi)
 Maya Banks, Hamilton High School (Chandler, Arizona)
 Dijonai Carrington, Horizon Christian Academy (San Diego, California)
 Whitney Creech, Jenkins High School (Jenkins, Kentucky)

CONTRIBUTOR AWARDS

Jostens-Berenson Lifetime Achievement Award

Lin Dunn, assistant coach, University of Kentucky (formerly head coach at Austin Peay University, University of Mississippi, University of Miami, Purdue University, Portland Power, Seattle Storm, Indiana Fever)

WBCA Administrator of the Year

Rich Ensor, Commissioner, Metro Atlantic Athletic Conference

Mel Greenberg Media Award

Brenda VanLengen, TV analyst



Lin Dunn
Coach



Rich Ensor
MAAC



Brenda VanLengen
TV Analyst

TEAM AWARDS

Russell Athletic 'Together We R' Team Award

State University of New York at Geneseo

WBCA Academic Top 25 Team Honor Roll

(rank, team, head coach, team GPA)

NCAA Division I

1. St. Francis College Brooklyn, John Thurston, 3.712
2. University of South Dakota, Amy Williams, 3.691
3. Youngstown State University, John Barnes, 3.639
4. Eastern Washington University, Wendy Schuller, 3.637
5. Houston Baptist University, Donna Finnie, 3.612

6. Belmont University, Cameron Newbauer, 3.591
7. St. Bonaventure University, Jim Crowley, 3.575
8. University of Northern Iowa, Tanya Warren, 3.565
9. Loyola University Maryland, Joe Logan, 3.556
10. Drake University, Jennie Baranczyk, 3.546
11. Bradley University, Michael Brooks, 3.534
12. University of New Mexico, Mike Bradbury, 3.524
- 13t. University of Wisconsin, Green Bay, Kevin Borseth, 3.515
- 13t. Northwestern State University, Brooke Stoehr, 3.515
15. Saint Louis University, Lisa Stone, 3.503
16. Creighton University, Jim Flanery, 3.498
17. University of Denver, Kerry Cremeans, 3.484
18. University of Maine, Richard Barron, 3.480
19. Florida Gulf Coast University, Karl Smesko, 3.475
20. Harvard University, Kathy Delaney-Smith, 3.474
21. DePaul University, Doug Bruno, 3.470
22. Liberty University, Carey Green, 3.468
23. Abilene Christian University, Julie Goodenough, 3.450
24. American University, Megan Gebbia, 3.449
25. Bowling Green State University, Jennifer Roos, 3.446

NCAA Division II

1. Upper Iowa University, Carol Russell, 3.731
2. Ohio Dominican University, Lynsey Warren, 3.720
3. Seton Hill University, Mark Katariski, 3.711
4. Minnesota State University, Mankato, Emilee Thiesse, 3.675
- 5t. Northwood University, Jeff Curtis, 3.672
- 5t. University of Findlay, James Wiedie, 3.672
7. University of Sioux Falls, Travis Traphagen, 3.656
8. Lindenwood University, Tony Francis, 3.649
9. Michigan Technological University, Kimberly Cameron, 3.645
10. Lee University, Marty Rowe, 3.627
11. Rockhurst University, Larry Park, 3.619
12. Barry University, William Sullivan, 3.616
13. University of the Sciences, Jackie Hartzell, 3.604
- 14t. Ashland University, Robyn Fralick, 3.603
- 14t. Winona State University, Scott Ballard, 3.603
16. Drury University, Molly Miller, 3.593
17. Lubbock Christian University, Steve Gomez, 3.591
18. Texas Woman's University, Beth Jillson, 3.589
19. Augustana University, Dave Krauth, 3.583
20. Minnesota State University Moorhead, Karla Nelson, 3.570
21. Western Oregon University, Holli Howard-Carpenter, 3.566
22. Fort Hays State University, Tony Hobson, 3.559
23. Holy Family University, Mark Miller, 3.553
24. Gannon University, James Brunelli, 3.530
25. Lake Erie College, Robert Booher, 3.517

NCAA Division III

1. University of Dubuque, Mark Noll, 3.685
2. Westminster College (Missouri), Tracey Braden, 3.662
3. Emerson College, Bill Gould, 3.611
- 4t. Houghton College, Alicia Mucher, 3.605
- 4t. University of California, Santa Cruz, Todd Kent, 3.605
6. Lancaster Bible College, Katelyn Vanderhoff, 3.585
7. Bethel University (Minnesota), Jon Herbrechtsmeyer, 3.584
8. Yeshiva University, Michael Alon, 3.579
9. Lakeland College, Aaron Nester, 3.570
10. North Central University, Paul Brunner, 3.560
11. Kalamazoo College, Katie Miller, 3.555
12. Nebraska Wesleyan University, Britni Fett, 3.553

13. Olivet College, Nicole Burford, 3.544
14. New York University, Lauren Hall-Gregory, 3.539
15. Washington and Lee University, Christine Clancy, 3.538
16. University of Wisconsin-Stevens Point, Shirley Egner, 3.532
17. Elmhurst College, Tethnie Carrillo, 3.531
- 18t. Simmons College, Kristen Rasmussen, 3.529
- 18t. Monmouth College, Kyle Wilson, 3.529
20. Chatham University, Sandy Rectenwald, 3.519
21. Massachusetts Institute of Technology, Sonia Raman, 3.509
- 22t. Capital University, Dixie Jeffers, 3.493
- 22t. Millikin University, Lori Kerans, 3.493
- 24t. The College of New Jersey, Dawn Henderson, 3.487
- 24t. Waynesburg University, Sam Jones, 3.487

NAIA

1. Mount Marty College, Tom Schlimgen, 3.828
2. Concordia University (Nebraska), Drew Olson, 3.730
3. Valley City State University, Jill DeVries, 3.678
4. Davenport University, Robyn Scherr, 3.659
5. Indiana Wesleyan University, Steve Brooks, 3.624
6. St. Ambrose University, Krista Van Hauen, 3.611
7. Bethel College (Kansas), Mark Fox, 3.594
8. Lewis-Clark State College, Brian Orr, 3.562
- 9t. Montana State University-Northern, Chris Mouat, 3.556
- 9t. Doane College, Tracee Fairbanks, 3.556
11. Huntington University, Lori Culler, 3.548
12. University of Rio Grande, David Smalley, 3.535
- 13t. Cardinal Stritch University, John Pfaffl, 3.533
- 13t. Indiana University East, Tiffani Selhorst, 3.533
15. Dakota Wesleyan University, Jason Christensen, 3.525
16. Saint Xavier University, Bob Hallberg, 3.520
17. Northwestern College, Chris Yaw, 3.515
18. Freed-Hardeman University, Dale Neal, 3.500
19. Vanguard University, Russ Davis, 3.493
20. Kansas Wesleyan University, Ryan Showman, 3.487
21. Blue Mountain College, Lavon Driskell, 3.483
22. Benedictine College, Chad Folsom, 3.465
23. Carroll College, Rachelle Sayers, 3.421
24. University of Great Falls, Bill Himmelberg, 3.404
25. Faulkner University, Reed Sutton, 3.363

Junior/Community College*

1. Northwest College, Janis Beal, 3.575
2. Sheridan College, Frank McCarthy, 3.567
3. Dawson Community College, Romeo Lagmay, Jr., 3.534
4. Des Moines Area Community College, Steve Krafcsin, 3.466
5. Snow College, Mike Russell, 3.446
6. Gulf Coast State College, Roonie Scovel, 3.250
7. Minnesota West Community & Technical College, Rosalie Hayenga, 3.193
8. McHenry County College, Karen Wiley, 3.148
9. Frank Phillips College, Eric Rodewald, 3.137
10. Johnson County Community College, Ben Conrad, 3.117
11. Lincoln College, Carol Wilson, 3.089
12. LaGuardia Community College, Anthony Alfaro, 3.033
13. Illinois Central College, Karrie Redeker, 3.030
14. Ventura College, Ned Mircetic, 3.016

* - Only 14 schools qualifying for recognition were nominated.

PRESIDENT'S LETTER



Originally emailed to members on September 6, 2016.

The 2016-17 academic year is here and the first day of official practice will soon be upon us! I hope you were able to have some restful and relaxing time at some point this summer.

While the off-season moves at a (somewhat) slower pace in our profession, know that your WBCA Board of Directors were hard at work on your behalf, and I am excited to share with you some of the matters we addressed over the summer months.

WBCA Day of Service

On Wednesday, September 28, the WBCA will hold its inaugural "WBCA Day of Service". We are asking all programs to engage in some act of service - small or large - within your community and then share about it on social (or traditional) media! It's a way for us to get the public excited and informed about all the powerful and impactful work we do that often goes unnoticed.

If your activity happens to take place on a different day, I encourage you to still promote your outreach on September 28, under a "WBCA Day of Service" umbrella, to collectively raise awareness of our programs, our profession and our association. More details to come soon about this inaugural initiative.

WBCA Coach to Coach Mentoring Program

The registration deadline for the new "WBCA Coach to Coach Mentoring Program" recently passed, and we had tremendous interest in the program. Mentors and mentees are now being paired, so if you signed up to participate, please watch your inbox for your mentoring assignment in the coming weeks.

It's important that all mentoring participants commit fully to the program so we ensure it is beneficial for all involved.

Educational Webinar Series

The WBCA has started a new webinar series, which offers you new online education opportunities.

Two webinars, both related to challenges regarding coaching and recruiting millennials, have been offered so far. Recordings are available on the WBCA website if you missed them.

Plans are to offer at least six webinars in the coming year. They will be announced in *Quick Hits*, which is emailed to you the first and third Wednesday of every month.

WBCA Convention

The 2017 WBCA Convention will take place Thursday, March 30, through Sunday, April 2, in Dallas. Convention programming will begin Thursday morning. There will be a WBCA Welcome Party that evening, and we look forward to seeing all of you there!

Also, be sure to include attending the 2017 NCAA Women's Final Four as well on your convention agenda - both the National Semifinal Games on Friday evening and the National Championship Game Sunday night. As coaches, it is imperative that we have a dynamic presence in the arena for the signature event in our sport.

Let's lead the way - so show up and show out in Dallas!

Center for Coaching Excellence

The "Center for Coaching Excellence" has been an amazing program and women's basketball is so thankful for Dr. Cathie Siders' and Dr. Dianne Murphy's leadership and wisdom, Geno Auriemma's initial contribution to begin the program, and the NCAA's annual grant to fund it. Congratulations to all who have participated in the program over the years! Moving forward, this outstanding program will be reinvented, refreshed and rebranded for future years. Stay tuned for details on how you can be involved in the new CCE!

Board Actions

During our annual Board of Directors meeting on July 27, the Board formally adopted positions on the issues below:

Diversity & Inclusion Committee

The Board established a Diversity & Inclusion Advisory Committee which will deliver ideas, provide input and give feedback to the Board on all diversity-related issues surrounding people of color, the LGBTQ community, moms and dads in coaching, and much more. The inaugural members of this committee will be announced soon and the Board is excited to have this committee start their work.

Playing Rules

The Board of Directors voted to SUPPORT the following conceptual rules changes recommended by the Playing Rules & Officiating Working Group:

- Do NOT reset the 10-second backcourt count when the offensive team is charged a timeout.
- Let conference offices make the judgment on flopping/ faking a foul and impose appropriate penalties per their respective sportsmanship policies rather than requiring game officials to more strictly enforce this on the court.
- Test experimental rules during the postseason WNIT in order to collect valuable data.
- Explore the use of new forms of technology.
- Keep the 30-second shot clock rather than going to a 24-second shot clock.

The Board DOES NOT SUPPORT permitting the opposing coach to select a free-throw shooter from the remaining four players on the floor when the player who was fouled is injured and cannot shoot.

Our positions have been conveyed to the NCAA Division I Women’s Basketball Oversight Committee and NCAA Women’s Basketball Rules Committee.

NCAA Championships

- The Board reviewed the NCAA Division I, II and III combined championship in 2016 and supports repeating this experience in some regular fashion.
- The Board formally adopted the position that it is the responsibility of all coaches of women’s basketball to attend the pinnacle event of the year — the NCAA Women’s Final Four. We all work diligently to get our fans to attend our games year round, so we should lead the way in showing how much we value our game by attending the National Semifinal and National Championship Games.

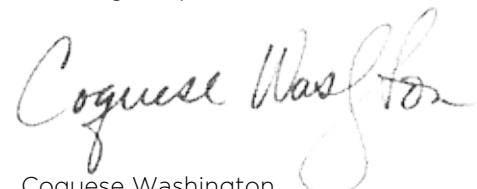
Appointments

- The Board appointed Brad Chapman, global head for strategic operations and integration for UCB, an international pharmaceuticals company, to the WBCA Board. Chapman, who has more than 17 years’ experience in corporate marketing and branding, will advise

and guide the Board and staff in these areas.

- The Board appointed Kathleen Kunkler, first vice president, wealth management, and sport and entertainment director for Morgan Stanley, as the Association’s investment manager.
- The Board appointed South Florida head coach Jose Fernandez as chair of the WBCA NCAA Division I Coaches’ All-America Selection Committee for a term of four years. DePaul head coach Doug Bruno, long-time chair of the committee, will continue to serve as past chair for one year. We thank Doug for his many years of service leading this important committee.
- The Board appointed Saint Mary’s head coach Jason Martens as NCAA Division II legislative chair on the WBCA Board for a term of three years. Martens replaces Claudette Charney, former head coach at Hillsdale College, who now holds an administrative position with the institution.

It is my pleasure to serve as your president. Please do not hesitate to contact Danielle Donehew, our executive director, or me if either of us can be of any assistance to you. Have a great preseason!



Coquese Washington
WBCA President



Women's Basketball Coaches Association
4646 Lawrenceville Highway • Lilburn, Georgia 30047
Phone: 770-279-8027 • Email: membership@wbca.org