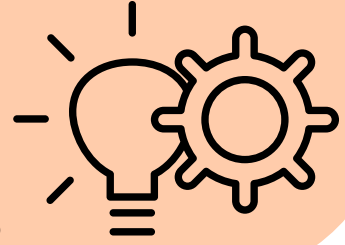


# SCHEDULING ORDER OF OPERATIONS

## “THE SCHOOL”

### 1. WHY?

- What are your program goals?
  - At-Large Bid?
  - Need to win to keep your job?
- Challenge your team OR Build chemistry?



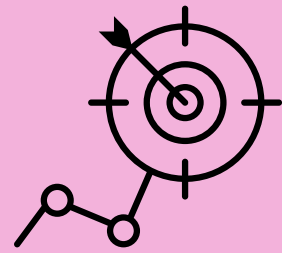
### 2. WHO?

- Who should you play?
  - WHAT LEVEL?
  - Style makes fights...
  - When do they historically underperform?



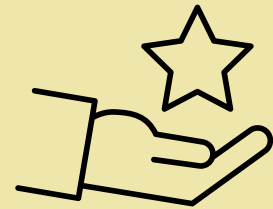
### 3. WHEN?

- Know your open dates.
- Communicate with Admin and MBB.
- Be mindful of TRAVEL & RECOVERY
- Home games that MAXIMIZE attendance



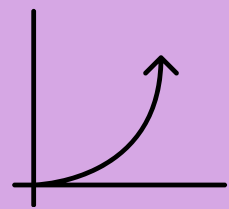
### 4. WHERE?

- The committee favors the BOLD.
- Neutral site wins are better than home wins. TOURNAMENTS? 3 GAME OR 2?
- Should you even play road games?



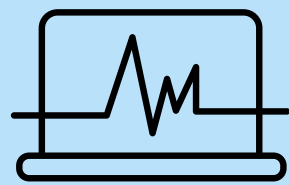
### 5. HOW MUCH?

- What is your guarantee budget?
  - And is it really your choice?
- How much to host a game ALL-IN?
- How much to go on the road ALL-IN?



### 6. CONTACT

- KNOW KEY TIMES OF YEAR
- Be ready to strike.
- Be prompt and always follow-thru



### 7. CONTRACTS

- Know YOUR policy...but fight for promptness.
- Understand that times have changed and you MUST get them out and signed ASAP



### 8. STAY ORGANIZED

- Always know who you are playing and have this INFO on you digitally.
- Be able to answer questions about your schedule. YOU ARE THE EXPERT.

