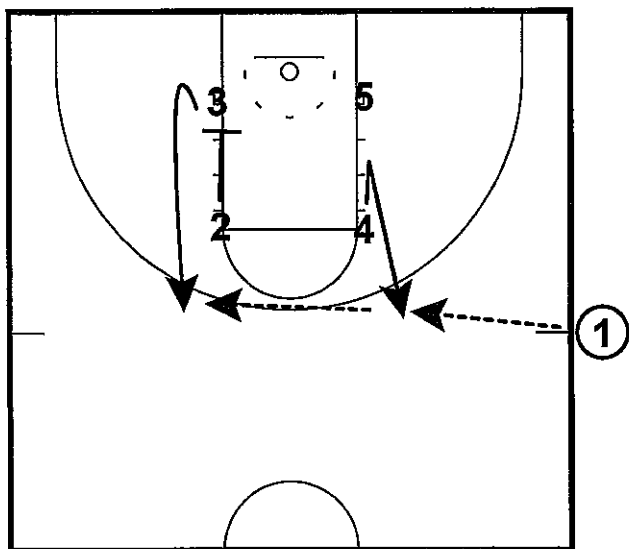


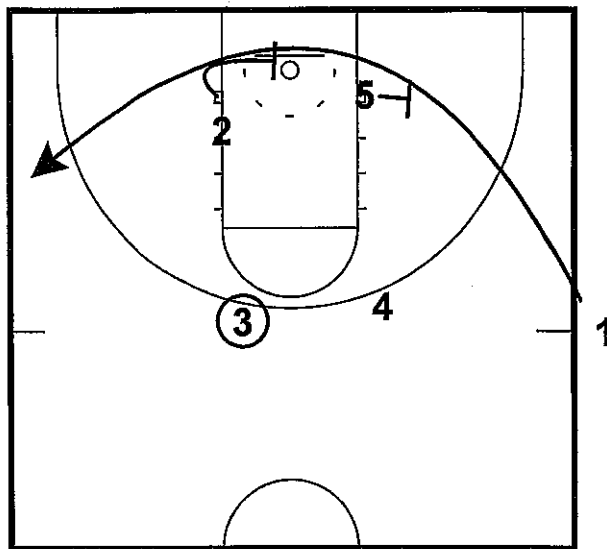
Detroit

YSU- SLOB
SLOBs



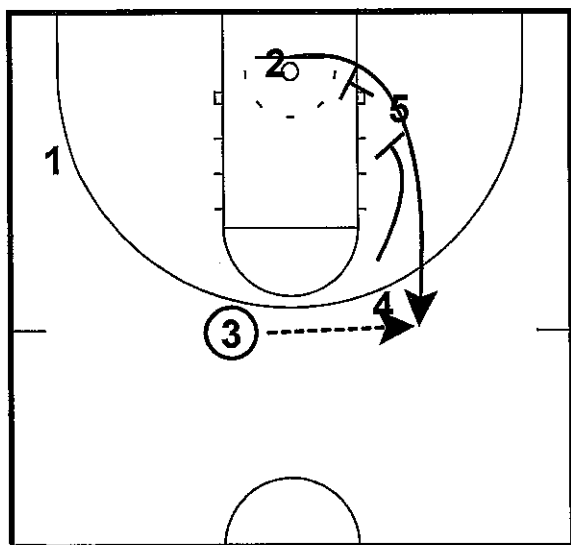
The 1 and the 2 should be your best two shooters in this play. 4 player cuts in and pops out to get the ball then swings it to the three

YSU- SLOB
SLOBs



The 1 then comes off the screen from the and the two looking to get a three or a short mid-range shot.

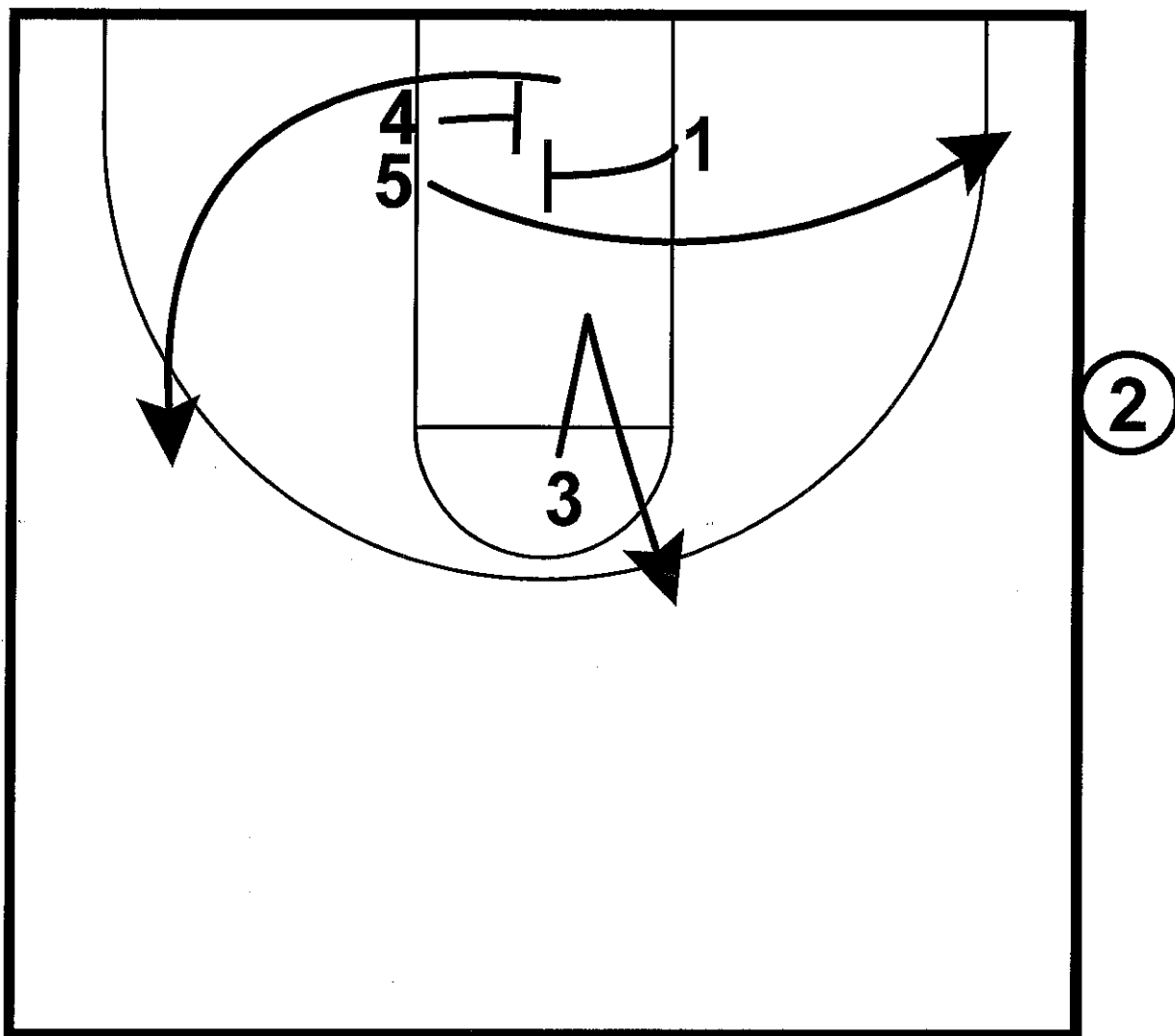
YSU- SLOB
SLOBs



As soon as the 1 rubs off the 2's shoulder the 2 will come off of a stagger screen from the 4 and 5 looking for a three.

Emory

SOOB
OOB

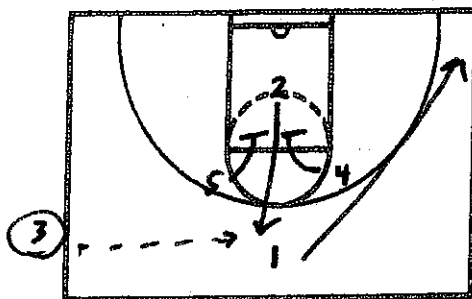


3 cuts in and pops out. 1 cross screens the 4 to ballside. 5 screens 1 to the weakside.



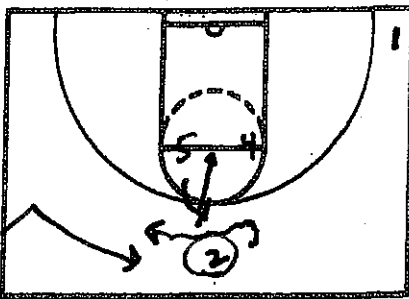
FALCON
BASKETBALL

"EAGLE"

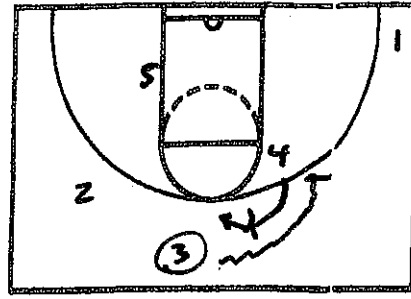


NOTES

2 CATCHES / SHOTS

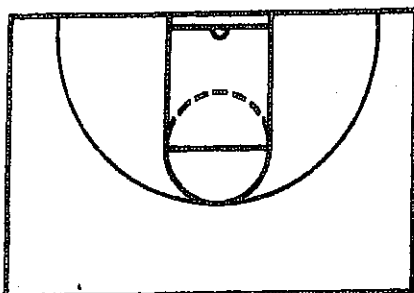


2 RECEIVES BALL SCREEN
FROM 5 AND
HANDS OFF TO 3

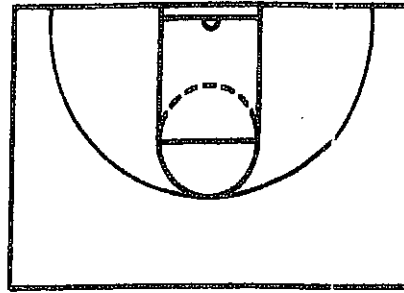
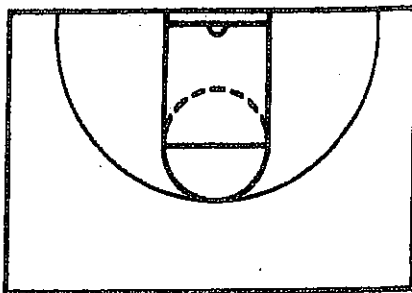


3 RECEIVES BALL SCREEN
FROM 4 ; 4 POPS

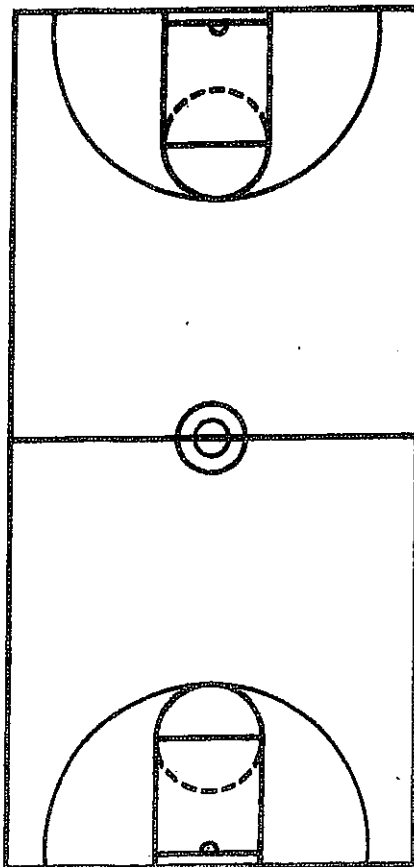
3 HAS 1 IN CORNER AND
5 ON WEAKSIDE BLOCK



NOTES

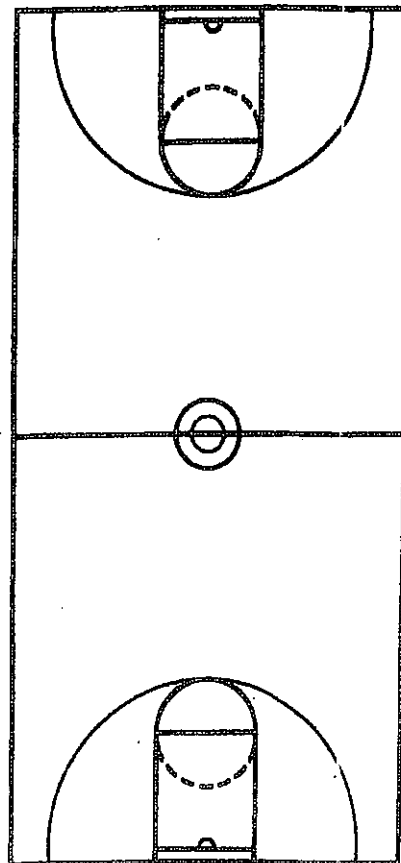


JUST DO IT



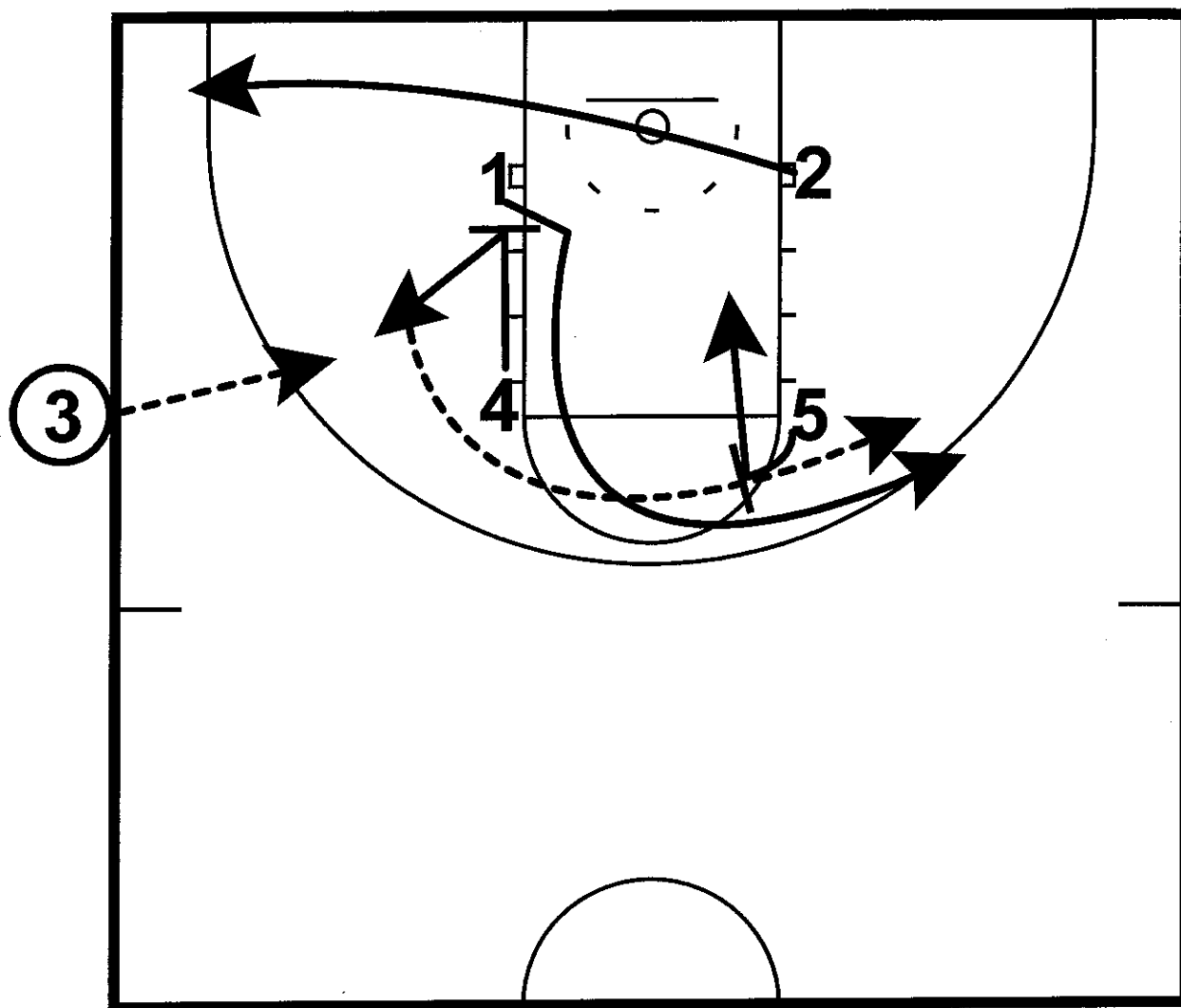
NOTES

1- PG
2- Shooter
3- Driver
4- Stretch
5- Post



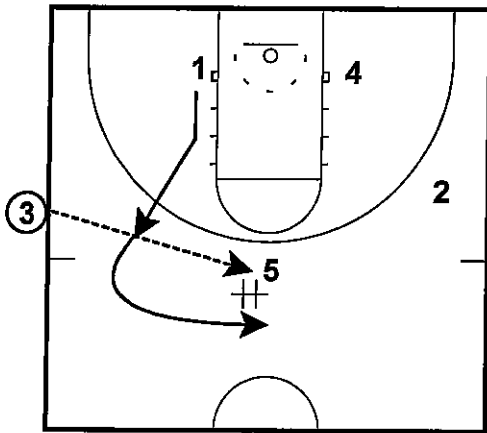
Flagler

Side line 2
SOB

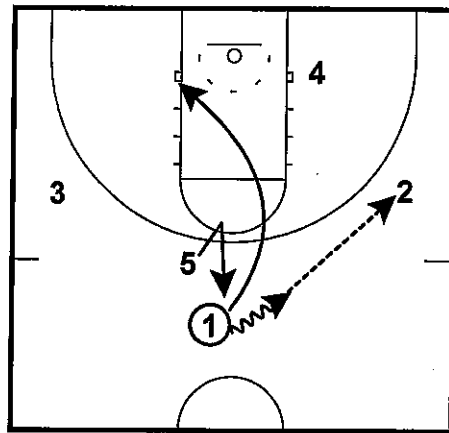


4 will screen down for 1, 1 will cut up inside/middle extremely hard off of 4's screen to the three point line. 4 will flash back to the ball as a secondary release. 3 will inbound the ball to 4 whom will look to skip the ball to the 1 looking to score or 3 can throw the direct skip pass to the 1 who is flared by 5. After the flare screen, 5 will slip to the basket.

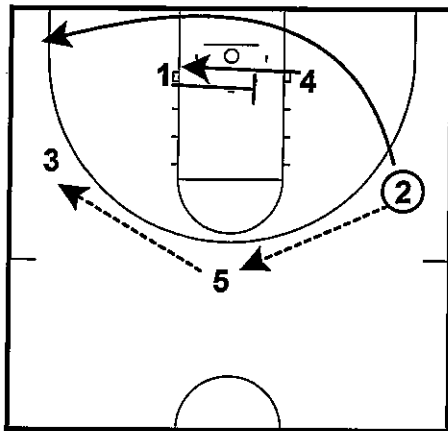
Gold - SLOB
SLOB's



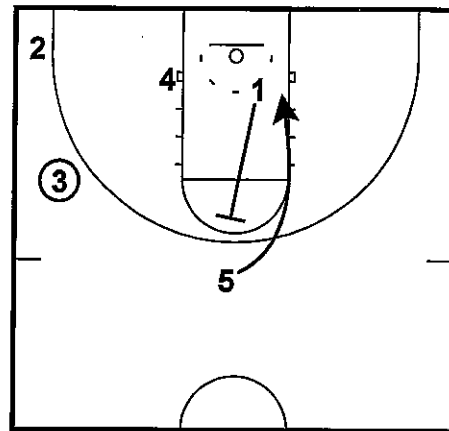
Gold - SLOB
SLOB's



Gold - SLOB
SLOB's



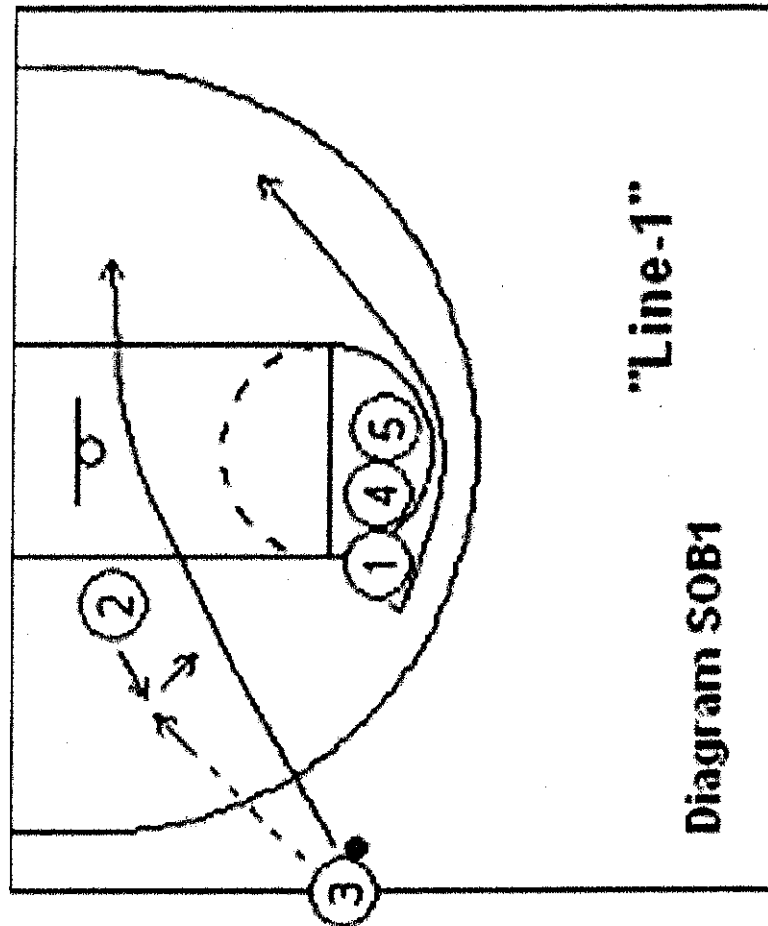
Gold - SLOB
SLOB's



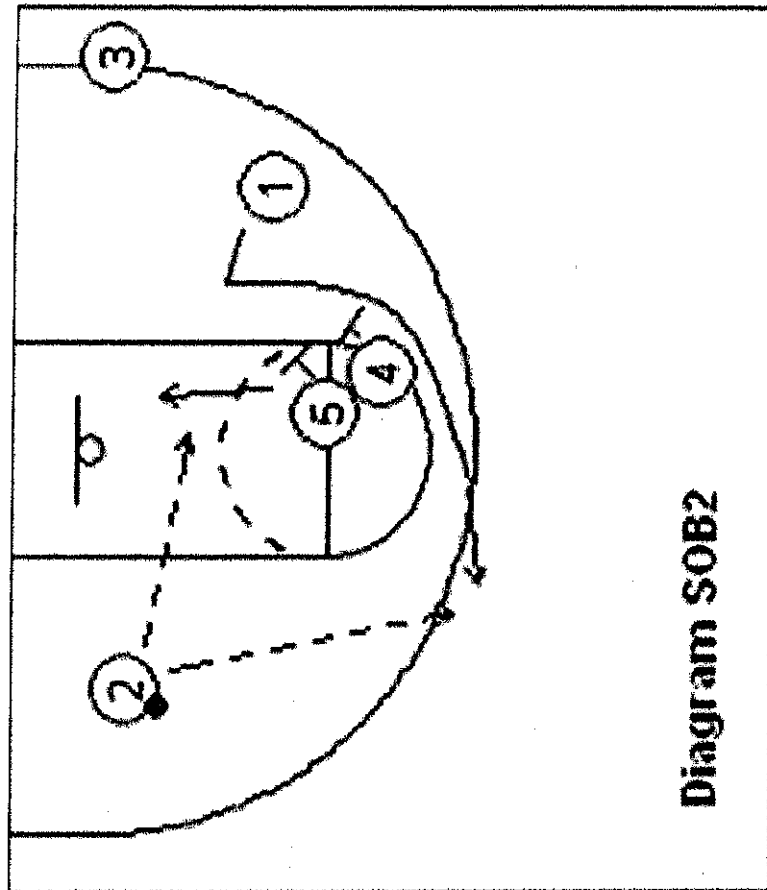
Sideline Out of Bounds:

Line-1

O1, O4 and O5 line-up as seen in diagram SOB1. O2 starts at the ball-side block and cuts up a little to receive the inbounds pass from O3. Meanwhile O1 cuts around O4 and O5 to the weak-side shallow wing area. After passing, O3 makes a hard basket-cut for the possible give-and-go play with O2. If the give-and-go is not there, O3 continues to the opposite corner. O1 fakes the basket-cut, reverses direction and comes over the O4-O5 double-screen. O1 could get the 3-point shot here. O5 can slip the screen for the pass from O2.

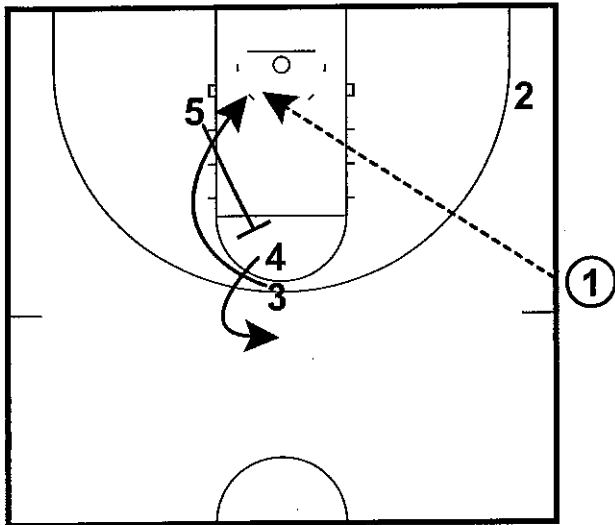


"Line-1"



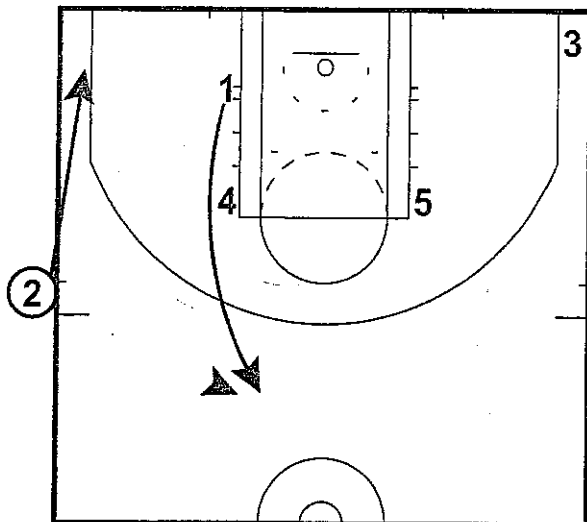
SLOB: Minn

Frame 1



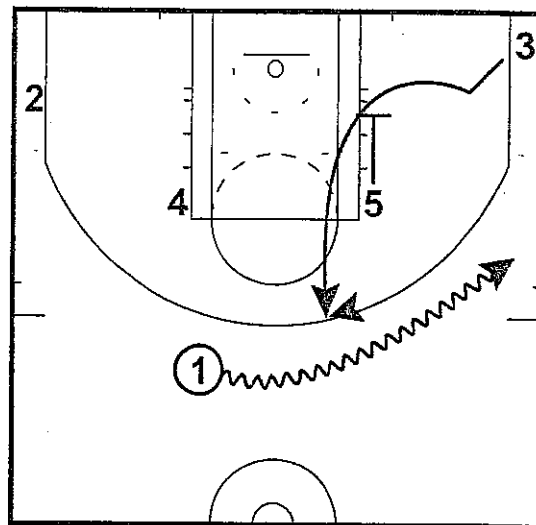
Spurs Slob

Frame 1



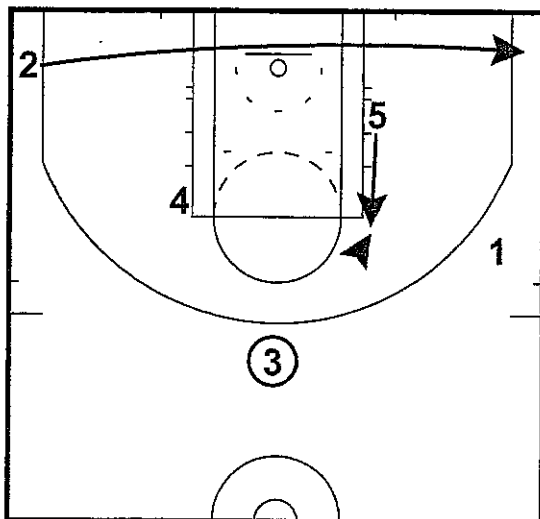
1 cuts to the top of the key using 4 as a screener if needed.
2 passes to 1 and cuts to same side corner

Frame 2



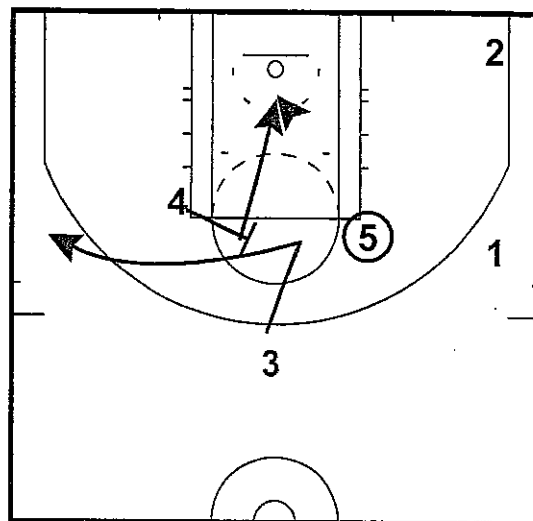
1 dribbles to the wing
5 down screens for 3 to bring 3 to the top of the key.
(Zipper Cut)
1 passes to 3

Frame 3



2 clears to the other corner
3 passes to the 5 at the pinch post

Frame 4



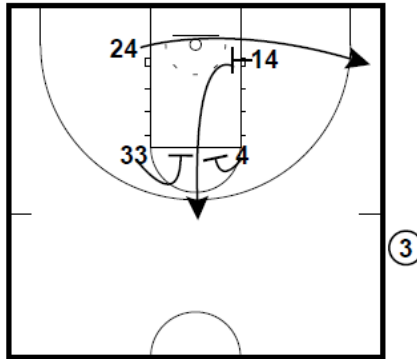
4 sets up a flare screen for the 3
If the defense releases to help on the flare - instant slip the basket.

Kansas State University

Box ELEVATOR

SLOB

Box ELEVATOR
SLOB

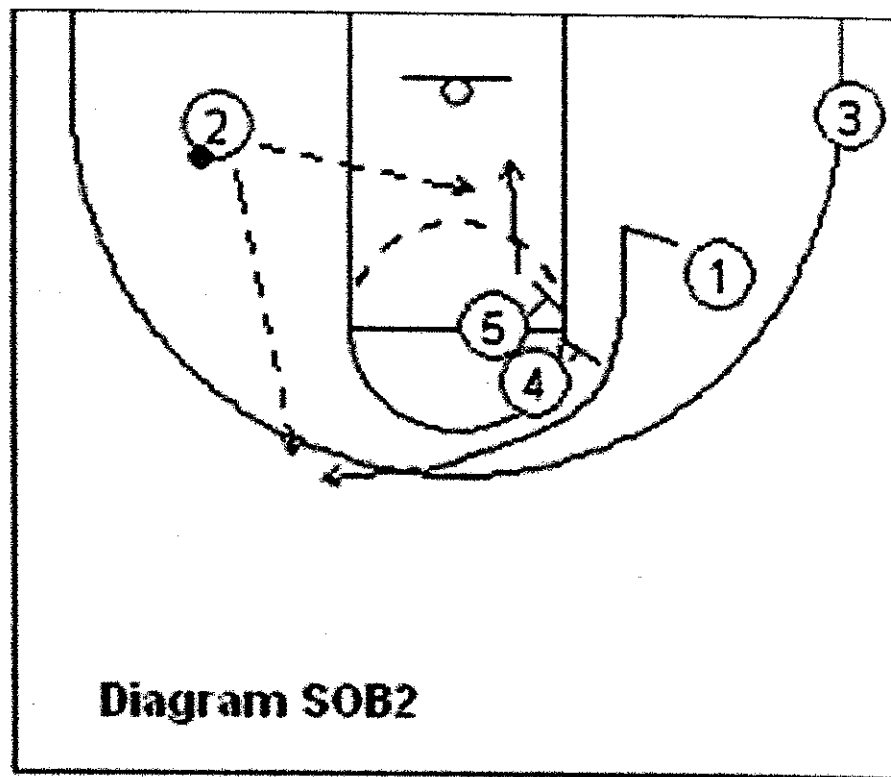
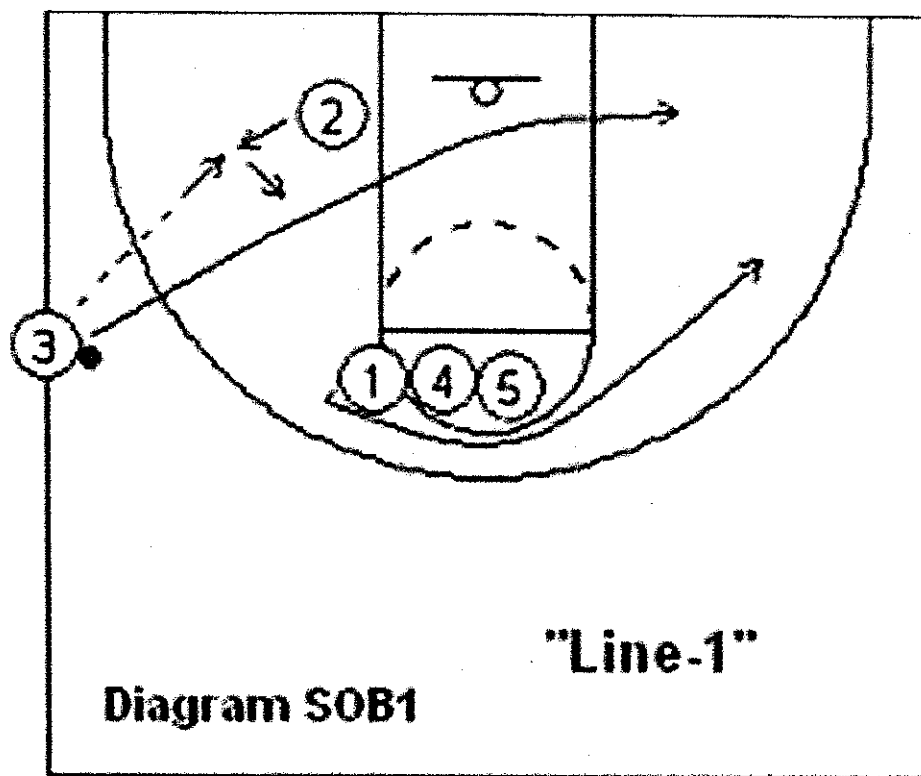


Shooter to BASELINE CORNER
Shooter up the ELEVATOR SCREEN

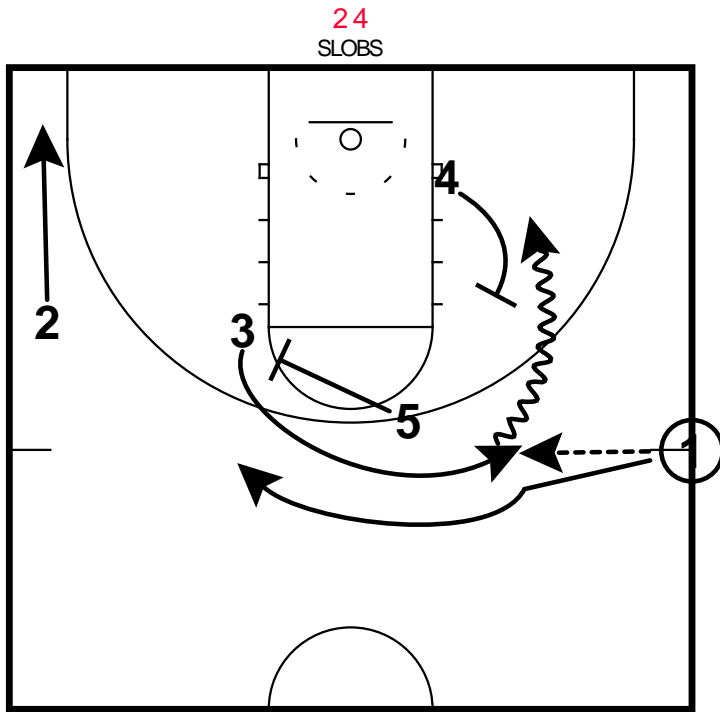
Sideline Out of Bounds:

Line-1

O1, O4 and O5 line-up as seen in diagram SOB1. O2 starts at the ball-side block and cuts up a little to receive the inbound pass from O3. Meanwhile O1 cuts around O4 and O5 to the weak-side shallow wing area. After passing, O3 makes a hard basket-cut for the possible give-and-go play with O2. If the give-and-go is not there, O3 continues to the opposite corner. O1 fakes the basket-cut, reverses direction and comes over the O4-O5 double-screen. O1 could get the 3-point shot here. O5 can slip the screen for the pass from O2.



Dayton
24



5 sets screen to get ball to 3. 1 fakes dribble hand off, and 4 sets ball screen for 3 to attack and look for shot. 4 pops for shot, and 2 shades to corner for drift pass.