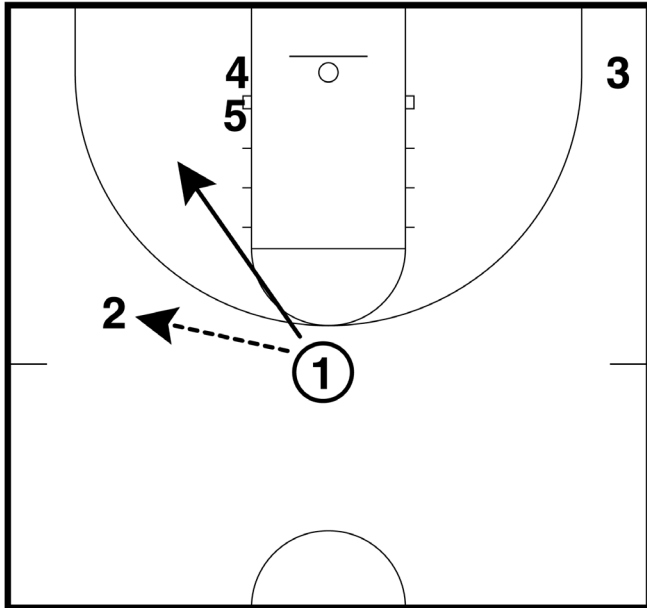


Offensive Play: Gold

Submitted by Tim Moser, University of Alaska-Anchorage

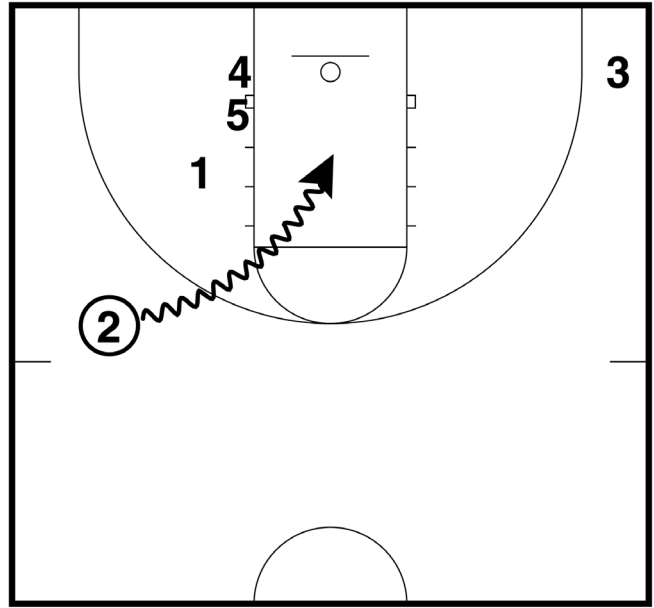
The following play works well for end of shot clock situations. Player 2 must be a driver and 3 must be a shooter.

Frame 1



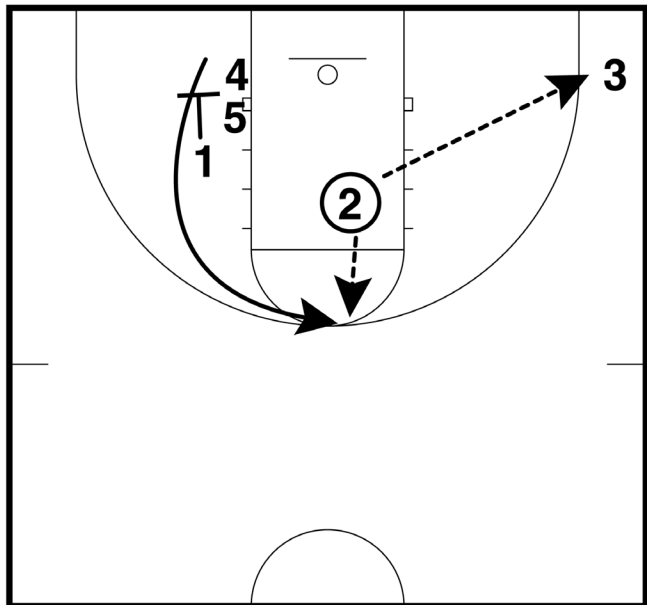
Player 2 catches the ball high so she can attack the paint. Player 1 cuts to ball-side mid-range area.

Frame 2



Player 2 attacks a 2-on-1 with 3 in the corner. Players 4 and 5 are in rebound position.

Frame 3



Player 1 sets screen for 4 coming behind ball for shot. Player 2 drives hard and looks for shot, pass to 3 in corner, or 4 coming off of the screen.