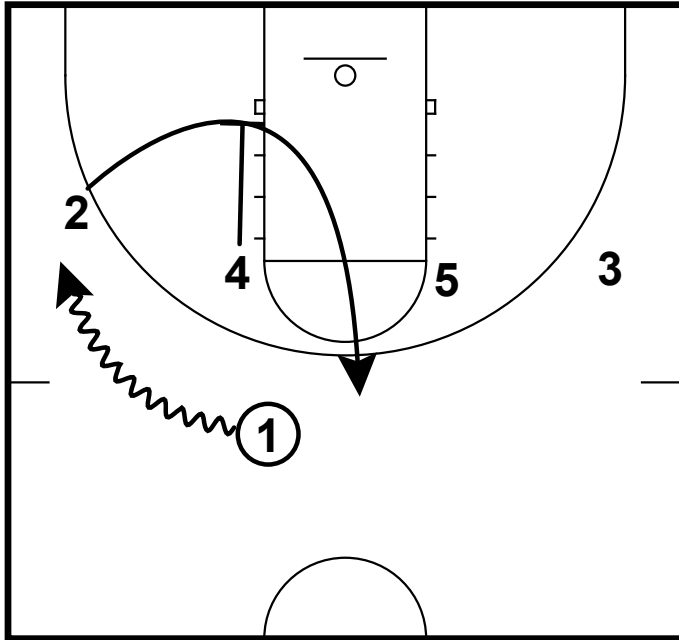


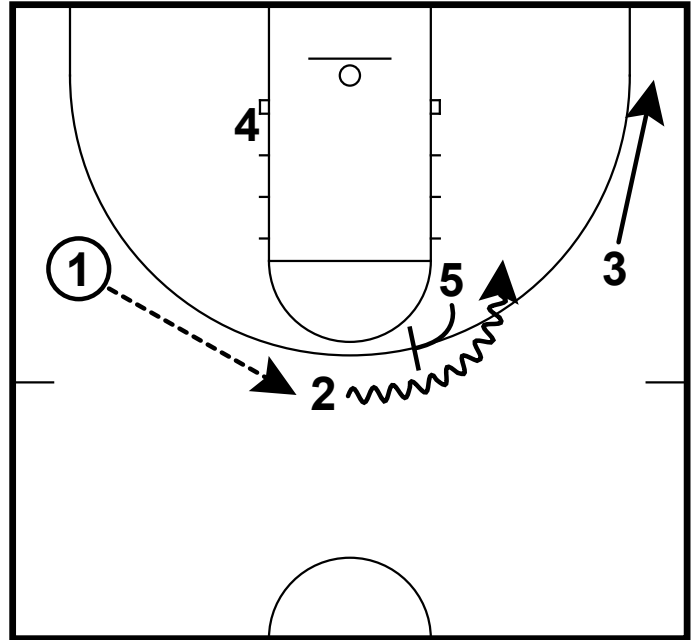
St. Leo HC Man

Basic



2 loops off down screen

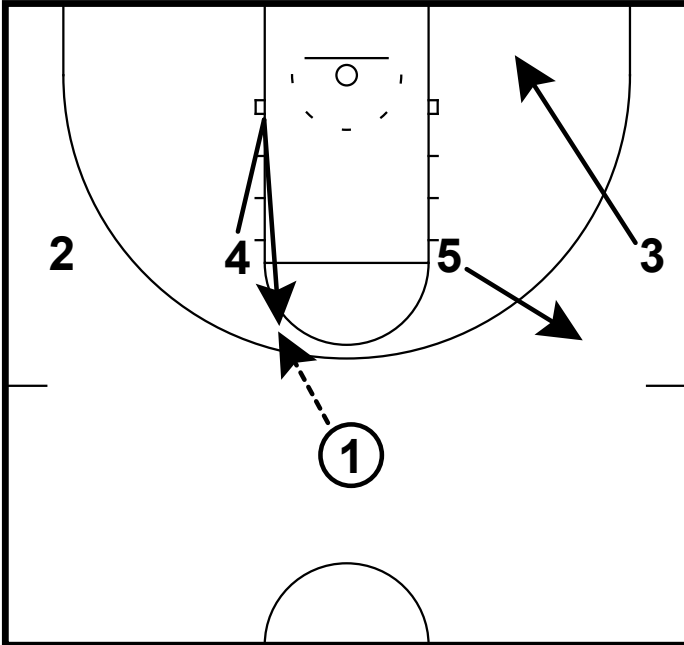
Basic



-High on-ball for 2
-3 spaces out

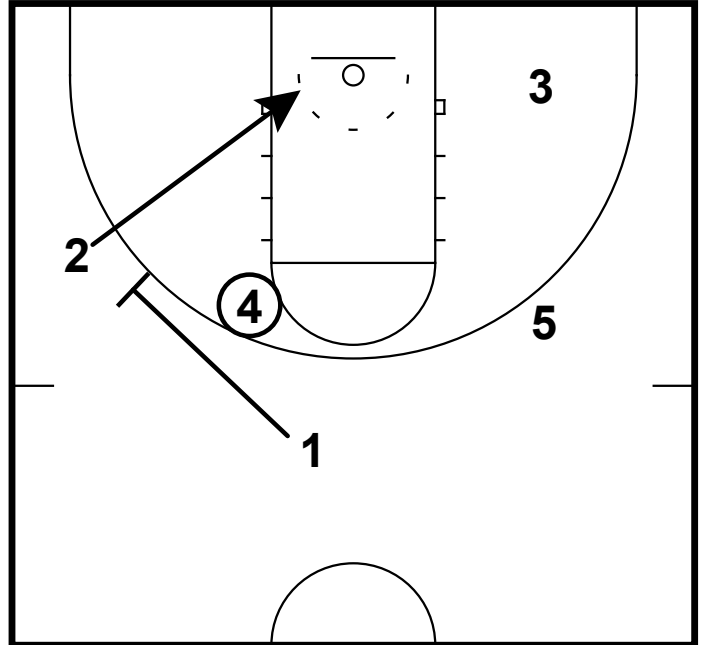
St. Leo HC Man

Bear



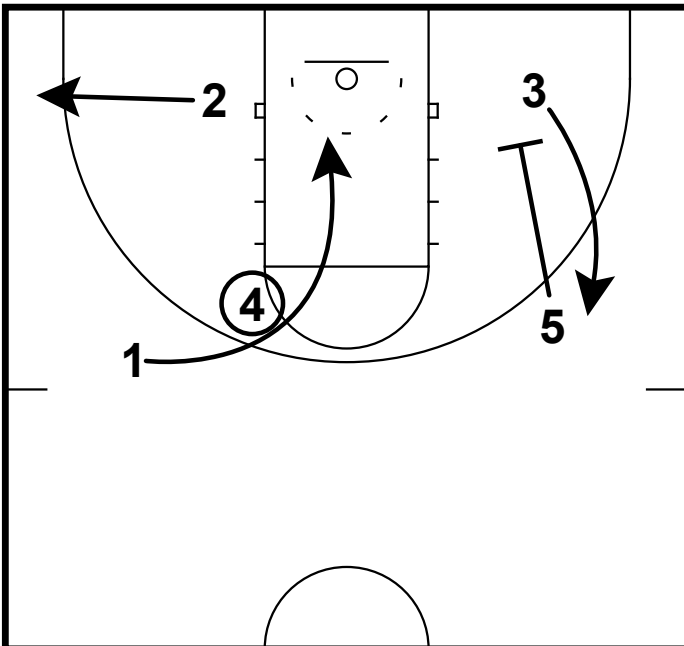
4 runs this set - makes decisions

Bear



2 hard backdoor off fake screen by 1

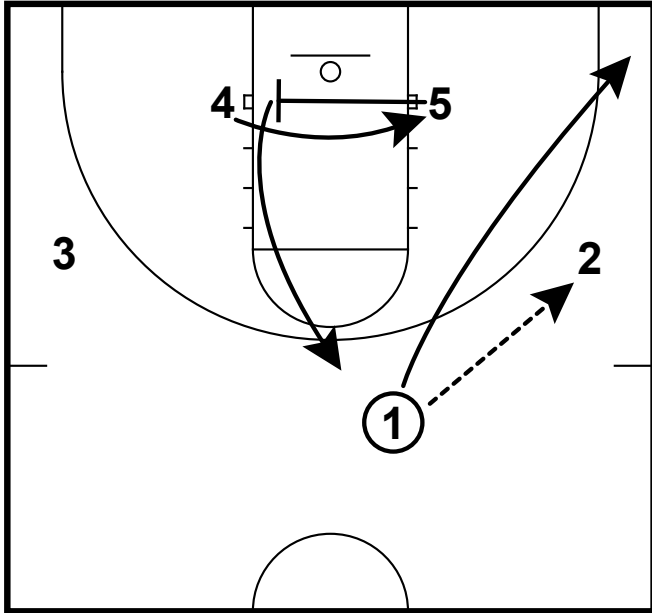
Bear



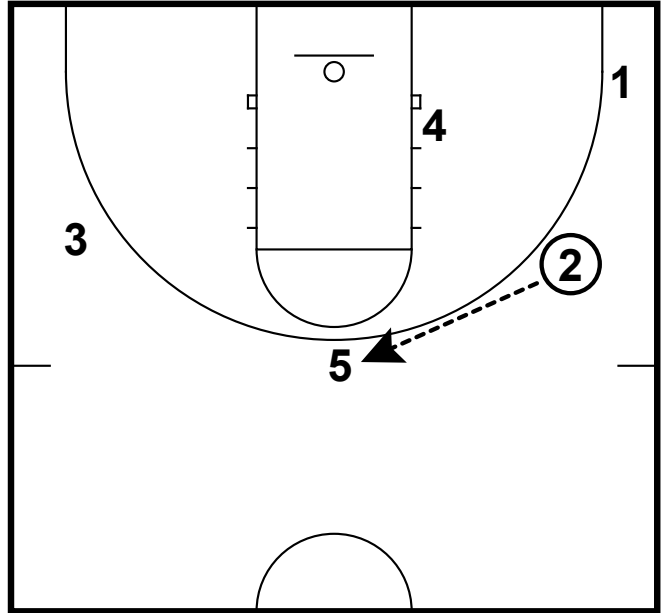
5 seals after screen

St. Leo HC Man

Chicago

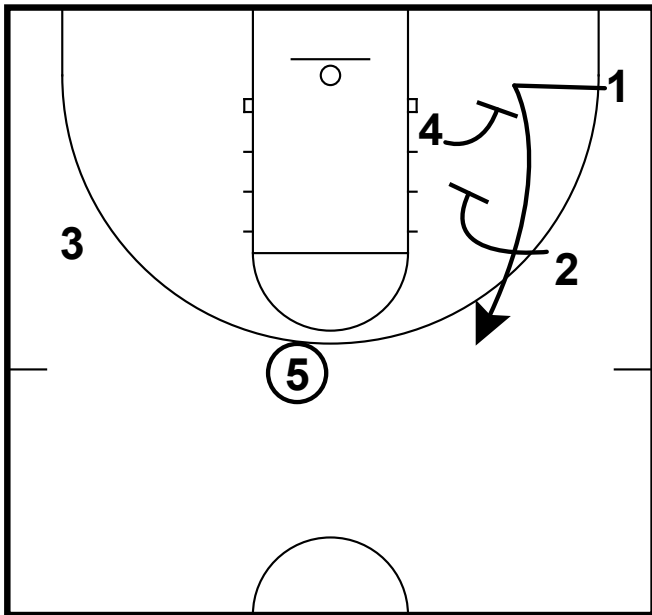


Chicago



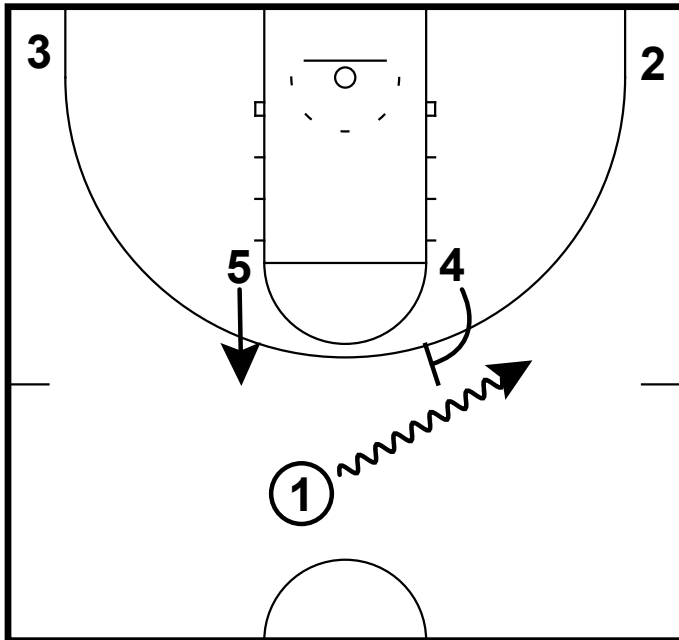
- Triangle between 1,2,4
- 5 pops to top of the key
- 5 has option to straight line drive left

Chicago



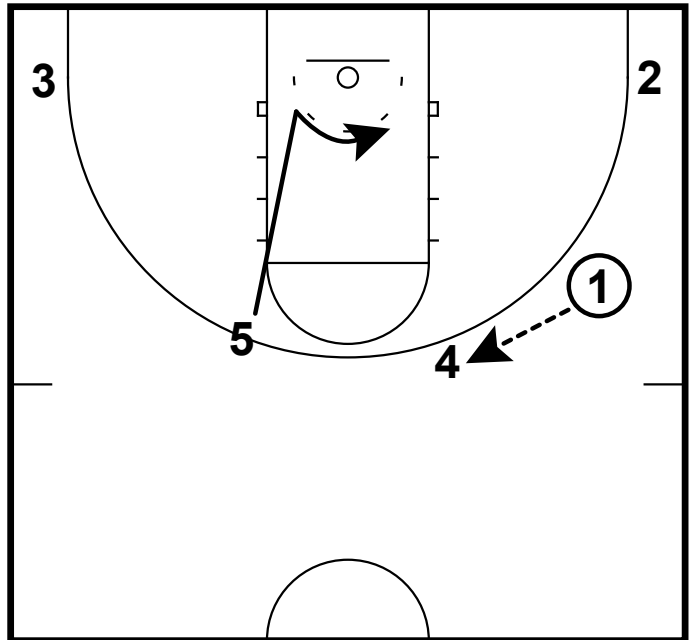
St. Leo HC Man

Horns



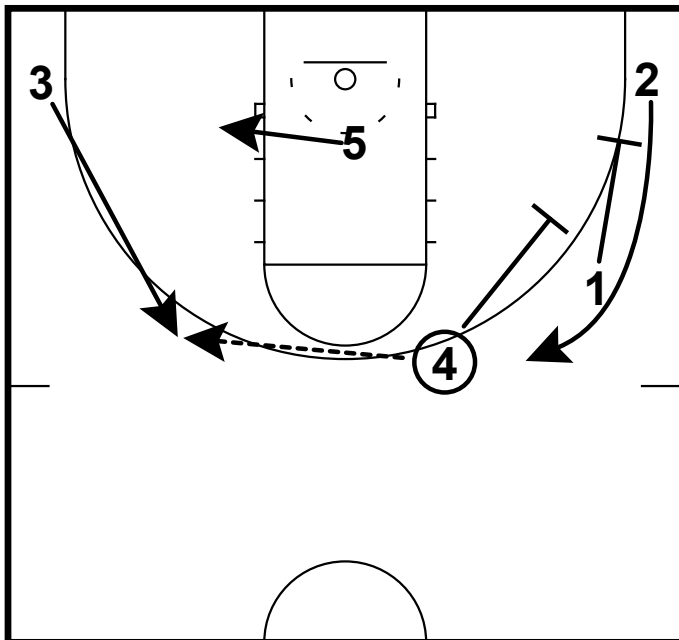
-1 can go off 4 OR 5

Horns



-5 Dives and seals
-4 Pops

Horns

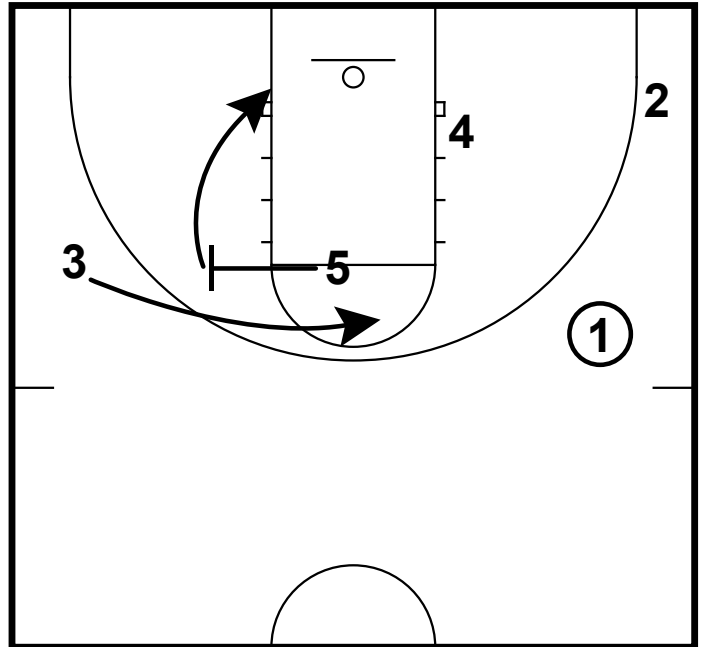
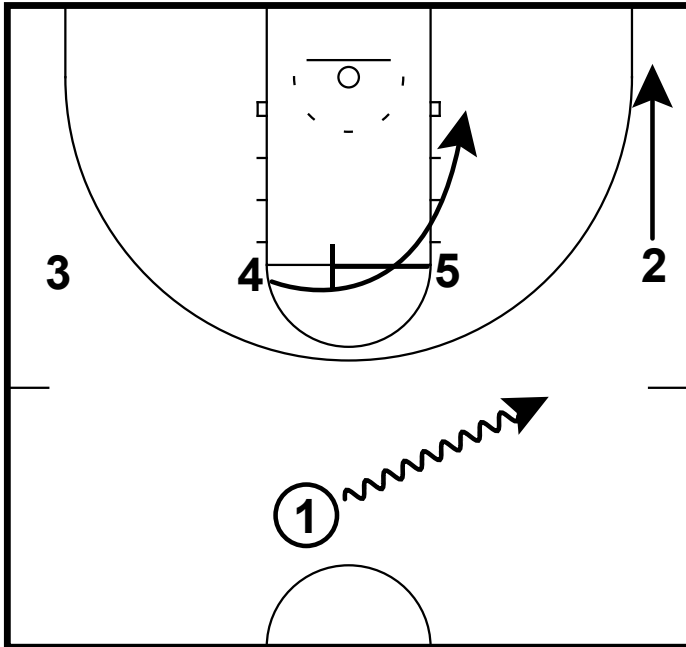


-If nothing is open in post, swing to the 3 and stagger screen for 2

St. Leo HC Man

Red Post

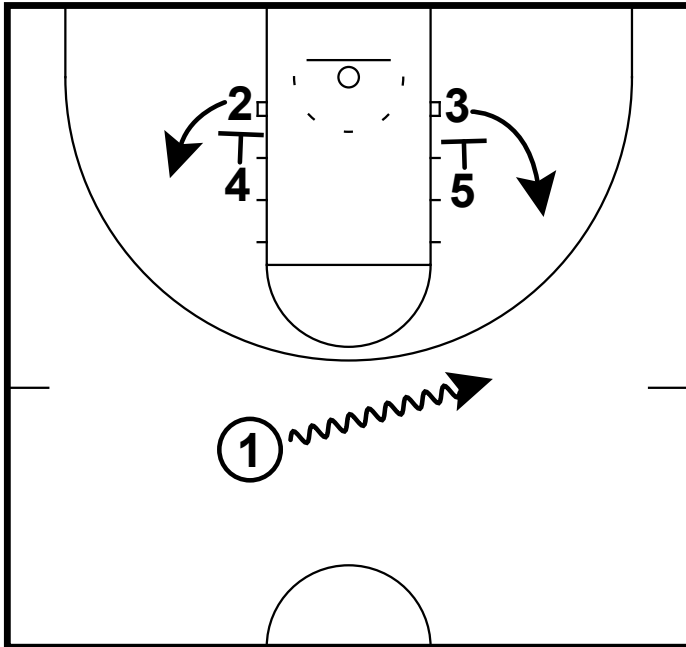
Red Post



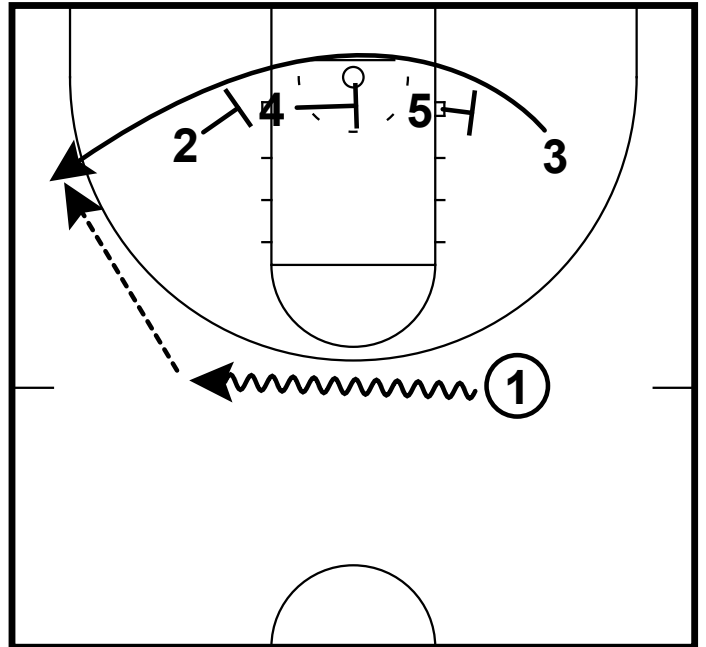
-Looks: 4 posting, Lob to 5, 3 cutting then high low

St. Leo HC Man

Trips

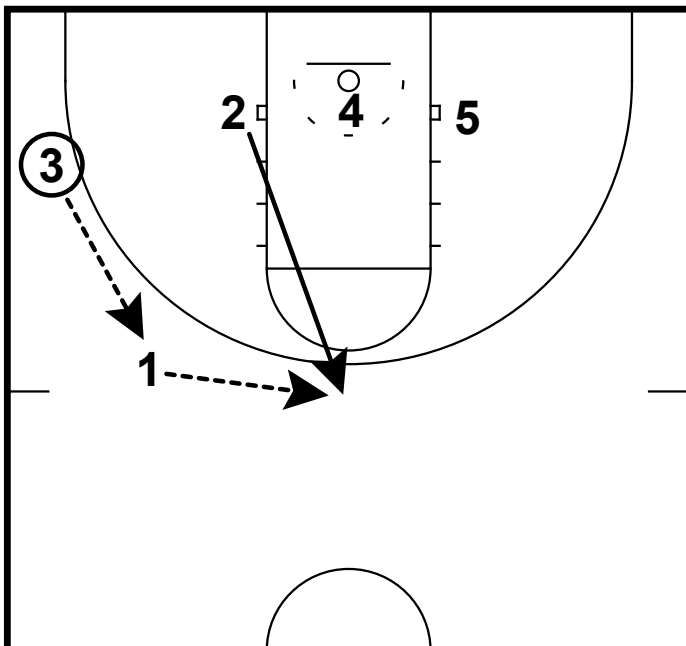


Trips



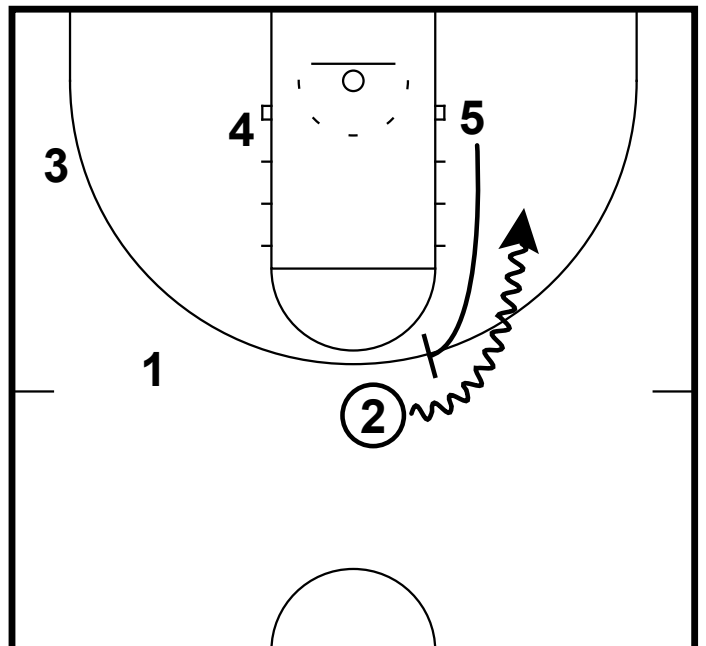
3 come off triple screen

Trips



Ball reversal as 2 shoots to top of key

Trips



HOB - 4 can duck in if 2 does not have a drive