



Mentor
Grow
Drive
Build
Commit
Teach
Dream
Share
Guide
Strive
Reach
Win

Lead.

Mentor
Grow
Drive
Build
Commit

Connect. Learn. Recognize.

2016-17 Annual Report

DEAR MEMBER

letter to the membership

inside

Letter to members	2
Strategic Plan 2014-18	3
2016-17 Membership.....	4
2016-17 Finances	5
Going to Convention.....	5
2016-17 WBCA Board of Directors.....	6
WBCA staff.....	7
Recognition	8

Dear member,

In 2014-15, we asked what you needed from your association.

In 2015-16, we put in place the necessary infrastructure and personnel to meet your needs.

In 2016-17, we delivered!

Never before has

the WBCA made such a dramatic leap forward in the services it provides you as did the association during the 2016-17 membership year.

From expanded educational programming to the establishment of an association-wide mentoring program, from the introduction of new awards to the creation of a committee to address the concerns of an increasingly diverse membership, the WBCA took great strides in helping you connect, learn, recognize and be recognized, and grow.



Coquese Washington
President



Danielle Donehew
Executive Director

Education

The WBCA significantly expanded and enhanced its educational programming and platforms during the 2016-17 membership year.

We launched the **WBCA Webinar Series** and presented more than a dozen webinars throughout the 2016-17 membership year,

which provides you with online educational programming from a variety of experts on timely topics to desktop, laptop, tablet and cellphone screens.

The 30-minute webinars were recorded and archived on WBCA.org for you to view anytime, anywhere.

We collaborated with coaches to start a series of new regional Whiteboard sessions called **Coaches' Classroom**, which offers in-person X's & O's instruction as well as professional development training to you closer to home at no additional charge.

Coaches' Classrooms were held in the first year of the new program at George Washington University, Merrimack College (North Andover, Massachusetts), the University of California, Berkeley, and the University of Toledo. A combined total of 251 coaches attended the four events.

For scholastic members, we started **High School Coaches Day** at the WBCA Convention, which provides daylong educational programming and networking opportunities designed specifically for you.

And we grew the **Coaching Library** on WBCA.org to more than 600 videos, articles, plays and drills, which are accessible to you online 24/7.

Mentoring

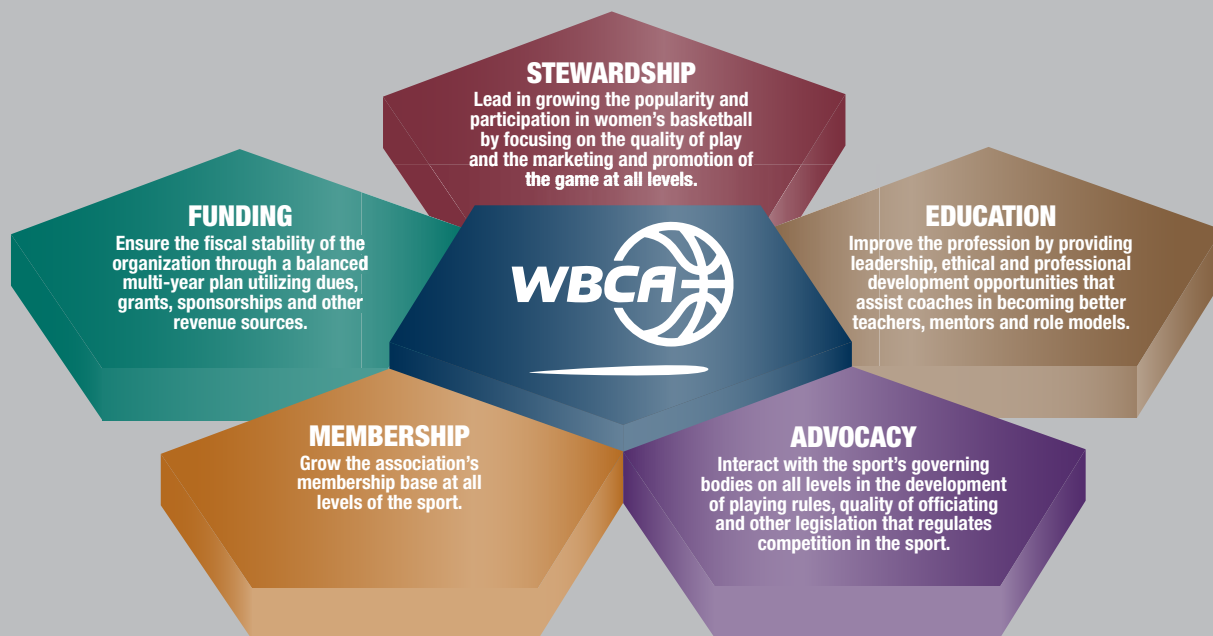
We launched the **Coach to Coach Mentoring Program**, a presidential priority, to resounding success.

In its first year, we connected 304



STRATEGIC PLAN 2014-18

WHO WE ARE. WHAT WE DO.



Our vision reflects who we are

The WBCA is the unified voice of coaches of women's basketball and leads in the growth and management of the sport. The WBCA will have a dynamic partnership with the sport's governing bodies on all levels and will be the premier source of professional development and educational programs on coaching, operations, branding and marketing that assist its member coaches in improving the quality and popularity of the game.

Our strategic goals reflect what we do

The WBCA's five strategic goals fit within the five core services the association provides its membership — Stewardship, Education, Advocacy, Membership and Funding.

mentees with 145 mentors to form 94 mentoring groups or huddles through which many of you shared and discussed your challenges, sought guidance from peers, and learned from each other.

Diversity

We formed a **Diversity & Inclusion Committee** to study and formulate recommendations to the board of directors and staff on matters relating to gender identity, sexual preference, race, ethnicity and other forms of diversity within the WBCA membership, as well as how the association can be more inclusive of all groups in its programs and services.

The goal of the committee is to impact our sport and you in a meaningful way.

Communication

We retooled the twice-monthly **Quick Hits** e-bulletin and now publish separate editions for the various membership divisions.

This allows us to deliver information that matters the most to you, regardless of the division in which you coach.

We also made great strides in **social media**, significantly increasing followers, impressions and engagements across every platform.

Day of service

We instituted a **WBCA Day of Service**, another presidential priority, during which you and your team could demonstrate the power that women's basketball has to make a difference within your local community.

A total of 118 teams participated in the inaugural nationwide effort in September 2016.

WBCA 2016-17 MEMBERSHIP

4226
TOTAL MEMBERS



Scheduling portal

We created an online **Scheduling Portal** through which those of you who coach on levels other than NCAA Division I can advertise open dates on your schedule and opponents needed.

NCAA Division I members continue to receive a similar service through WBCA partner Basketball Travelers Inc.

New awards

We partnered with adidas to introduce a new award — the **WBCA NCAA Division I Freshman Player of the Year presented by adidas**.

Destiny Slocum, formerly of Maryland (now Oregon State), was the first recipient.

Membership

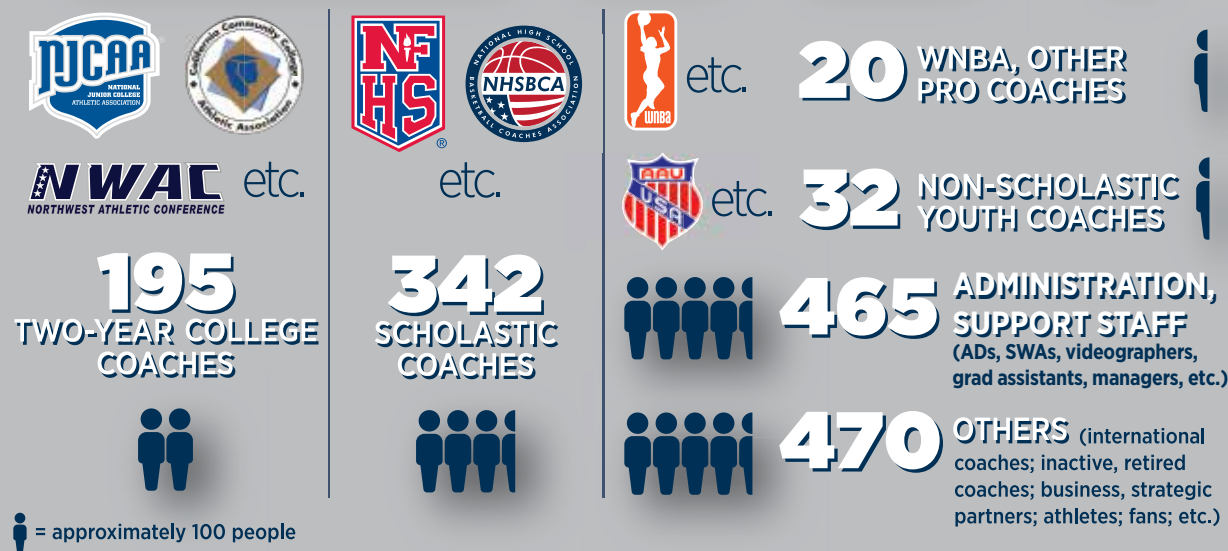
Membership remains consistent and strong.

The WBCA gained members in each of the six all-important “active coach” member divisions during the 2016-17 membership year, which can be largely attributed to the association’s new emphasis on educational opportunities leading to professional growth.

Convention

A record 2,475 members and guests attended the **2017 WBCA Convention** in Dallas, our best ever, eclipsing the previous high attendance by almost 100 people.

Session recordings are available online at WBCA.org if you were unable to attend. Oh, and of course, we hope you plan on joining us in Columbus, Ohio, for the 2018 convention.

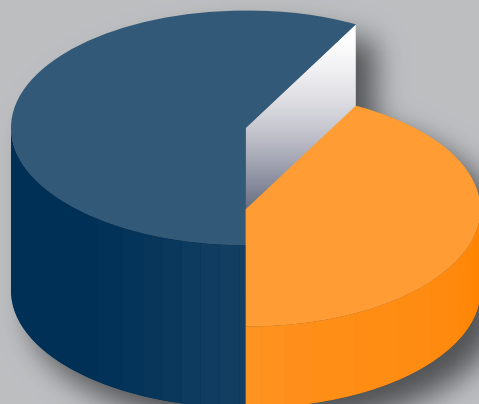




2016-17 BUDGET

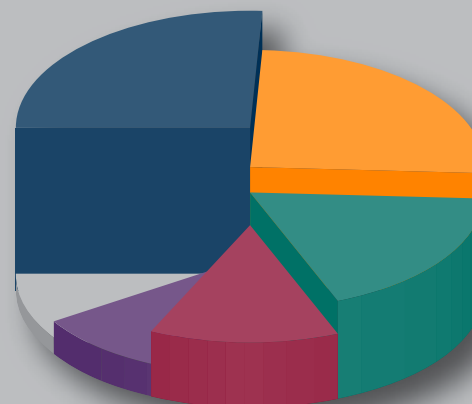
Revenue Source

- **Membership 58%**
(annual dues, convention registration fees, tuitions, donations, etc.)
- **External Sources 42%**
(sponsorships, advertising, grants, interest, etc.)



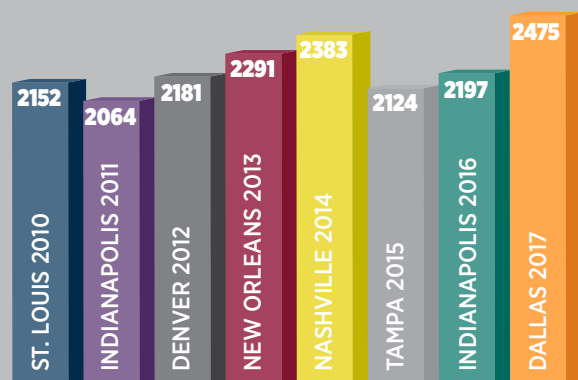
Revenue Allocation

- **Education 26%**
- **Administration 25%**
- **Stewardship 18%**
- **Membership 13%**
- **Advocacy 9%**
- **Funding 9%**



GOING TO CONVENTION

Attendance at the 2017 WBCA Convention in Dallas hit an all-time high of 2,475 registrants. Here is a look at convention attendances over the last eight years.



Finances

Even as we make the increased investment in our infrastructure and staff that is necessary to develop and deliver all these new services, the WBCA remains **financially sound**.

The future

We are proud of the new services we offered you during the 2016-17 membership year, but by no means do we intend to rest on our achievements from this past year.

We must do more, because you deserve no less.

We are hard at work expanding these programs and planning to launch even more new ones during the 2017-18 membership year and the years beyond.

On behalf of the board of directors and

staff, we thank all of you for your ongoing support and confidence in the WBCA's future.

We are on a remarkable journey together. Thanks for letting us walk with you.

With warm wishes and respect,

Coquese Washington
Coquese Washington
President

Danielle M. Donehew
Danielle M. Donehew
Executive Director

2016-17 board of directors

The WBCA Board of Directors determines association policy, provides guidelines for implementing its programs, and employs an executive director and staff to administer the organization. The WBCA Board is composed of member coaches elected by their peers from each of the six membership divisions, athletic administrators supportive of women's basketball, and professionals from the public sector who lend their expertise in areas such as finance, marketing and law. The board meets in person twice annually — once during the summer and once in conjunction with the WBCA Convention — and at least once each year by teleconference.

An Executive Committee composed of the association's officers and three at-large board members acts with the full authority of the board between board meetings. The executive committee reviews, amends and presents to the full board the proposed annual operating budget prepared by the executive director, and also annually evaluates on behalf of the board the performance of the executive director.

(x-denotes Executive Committee member; y-denotes non-voting member; z-denotes term of service ended June 30, 2017)



Karen Aston
Head Coach
Texas
NCAA Division I



Courtney Banghart
Head Coach
Princeton
NCAA Division I



Anucha Browne
Vice President
Women's BKB
NCAA (y)



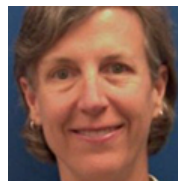
Carol Callan
National Team
Director
USA Basketball (y)



Brad Chapman
UCB
Public Sector



Tricia Cullopp
Head Coach
Toledo
NCAA Division I



Diane Dickman
Managing Director
NCAA Division I
Governance (y)



Danielle Donehew
Executive Director
WBCA
Secretary (x,y)



Chancellor Dugan
Head Coach
Bellarmine
NCAA Division II



Rich Ensor
Commissioner
MAAC
CCA



Lisa Fortier
Head Coach
Gonzaga
NCAA Division I



Brandon Harrell
Head Coach
Georgia Highlands
Jr./Comm. College



Nels Hawkinson
Basketball Travelers
Chair, Leadership
Advisory Council



Connie Hurlbut
Sr. Associate
Commissioner
WCC (x,z)



Trish Jones
eMentor Connect
Public Sector



Chris Kielsmeier
Head Coach
Wayne State, NE
NCAA Division II



Mary Klinger
Head Coach
Rutgers Prep
High School



Amanda Levens
Assoc. Head Coach
Arizona State
Assistant Coaches



Lacey Lewis
Cox Enterprises
Treasurer (x)



Patricia Manning
Head Coach
Williams
NCAA Division III



Jason Martens
Head Coach
St. Mary's, TX
NCAA Division II



Muffet McGraw
Head Coach
Notre Dame
NCAA Div. I (x)



Kirsten Moore
Head Coach
Westmont
NAIA



Martha Putallaz
Professor
Duke
FAR (y)



Jen Rizzotti
Head Coach
George Washington
Vice President (x)



Sue Semrau
Head Coach
Florida State
Past President (x,z)



Mary Beth Spirk
Head Coach
Moravian
NCAA Division III



Dawn Staley
Head Coach
South Carolina
NCAA DI WBOC



Christy Thomaskutty
Head Coach
Emory
NCAA Division III (x)



Coquese Washington
Head Coach
Penn State
President (x)



Stephanie Baron Dollar
Director of Education & Events

sbaron@wbca.org
770-279-8027 ext. 132

Responsibilities:

- Convention planning & logistics
- Educational programming

Contact for:

- NCAA DI and J/CC coaches

Staff liaison to WBCA:

- Playing Rules & Officiating WG
- Diversity & Inclusion Committee
- Professional Development WG
- NCAA DI Conference Captains



Latasha Lewis
Manager of Marketing Communications

llewis@wbca.org
770-279-8027 ext. 105

Responsibilities:

- Website maintenance and content
- E-communications
- Coach to Coach Mentoring Program

Contact for:

- NCAA DI/III coaches

Staff liaison to WBCA:

- Mentoring & Membership WG



Heather Sumperl
Manager of Membership & Registration

hsumperl@wbca.org
770-279-8027 ext. 134

Responsibilities:

- New memberships and renewal processes
- Convention registration
- Database administration

Contact for:

- NCAA DI/III coaches and alumni
- Spanish-speaking members

Staff liaison to WBCA:

- NCAA DI/III Conference Captains



Jack Watford
Director of Communications

jwatford@wbca.org
770-279-8027 ext. 112

Responsibilities:

- Branding and visual identity
- Messaging and media relations
- Website oversight and maintenance

Contact for:

- NCAA DI, NAIA, USCAA, NCCAA and independent college coaches

Staff liaison to WBCA:

- Committees WG
- Governance WG
- NCAA DI Top 25 Coaches Poll Committee
- NCAA DI Top 25 Coaches Poll Committee



Danielle Donehew
Executive Director

ddonehew@wbca.org
770-279-8027 ext. 122

Responsibilities:

- Oversight of WBCA business, financial and legal affairs, and association programs, operations and office staff
- Strategic partnerships and relationships

Staff liaison to WBCA:

- Board of Directors
- Executive Committee
- Finance Committee
- Leadership Advisory Council
- Presidents Advisory Council
- Committees WG

Represents WBCA on:

- Kay Yow Cancer Fund Board of Directors
- NCAA DI WBB Oversight Committee (nonvoting)
- Naismith Memorial Basketball Hall of Fame Board of Trustees
- Women's Basketball Hall of Fame Board of Directors



Dana Refling
Executive Assistant

drefling@wbca.org
770-279-8027 ext. 122

Responsibilities:

- Administrative assistance to the Executive Director and Deputy Director
- Office manager
- Bookkeeper and accounting support

Staff liaison to WBCA:

- Finance Committee



Daniella Trujillo
Manager of Events & Awards

dtrujillo@wbca.org
770-279-8027 ext. 110

Responsibilities:

- Administration of awards programs
- "So You Want To Be A Coach" program
- WBCA Courtside Expo

Contact for:

- NCAA DI coaches

Staff liaison to WBCA:

- Awards committees
- NCAA DI Conference Captains



Jeff White
Manager of Digital Media

jwhite@wbca.org
770-279-8027 ext. 111

Responsibilities:

- Social media marketing
- Video content/coaching library
- Online career center

Contact for:

- NCAA DI/III, high school and nonscholastic youth coaches; DOBOs, administrators and video coordinators

Staff liaison to WBCA:

- Youth Basketball WG
- NCAA DI/III Top 25 Coaches Poll Committee



Kara Hess
Manager of Education

khess@wbca.org
770-279-8027 ext. 145

Responsibilities:

- Educational programming
- Webinar series
- Coaches' Classroom
- Convention programming

Contact for:

- J/CC coaches

Staff liaison to WBCA:

- Professional Development WG
- Diversity & Inclusion Committee
- Assistant Coaches Committee



Shannon Reynolds
Deputy Director

shannonr@wbca.org
770-279-8027 ext. 118

Responsibilities:

- Day-to-day supervision of office staff and management of business operations

Staff liaison to WBCA:

- Board of Directors
- Executive Committee
- Finance Committee
- Governance WG
- Presidents Advisory Council
- NCAA legislative staffs

Represents WBCA on:

- NCAA DI WBB Oversight Committee Ad Hoc WG on Recruiting



Tip Tucker Kendall
Director of Membership Strategy

tkendall@wbca.org
770-279-8027 ext. 106

Responsibilities:

- Membership services and marketing
- Convention registration and marketing
- Member benefits and content strategy

Contact for:

- NCAA DI/III, high school and nonscholastic youth coaches; DOBOs, administrators, video coordinators and alumni

Staff liaison to WBCA:

- Mentoring & Membership WG
- Leadership Advisory Council
- NCAA DI/III Conference Captains



Whitney Young
Manager of Corporate Relations

wyoung@wbca.org
770-279-8027 ext. 103

Responsibilities:

- Corporate partner relations
- Courtside Expo sales
- WBCA board and committee elections

Contact for:

- NCAA DI coaches

Staff liaison to WBCA:

- NCAA DI Conference Captains
- Board of Directors
- Playing Rules & Officiating WG

Staff representative to:

- IMG
- Women's Basketball Hall of Fame Board of Directors

2016-17 award recipients & honorees

COACH AWARDS

NCAA Division I

Pat Summitt Trophy presented to the United States Marine Corps/WBCA National Coach of the Year

Geno Auriemma, University of Connecticut

Regional Coaches of the Year

Geno Auriemma, University of Connecticut
Douglas Bruno, DePaul University
Tonya Cardoza, Temple University
Brenda Frese, University of Maryland
Muffet McGraw, University of Notre Dame
Wes Moore, North Carolina State University
Robin Pingeton, University of Missouri
Scott Rueck, Oregon State University
Victor Schaefer, Mississippi State University

Tara VanDerveer, Stanford University

Spalding Maggie Dixon Rookie Coach of the Year

Shauna Green, University of Dayton



Shauna Green
Dayton

NCAA Division II

Pat Summitt Trophy presented to the United States Marine Corps/WBCA National Coach of the Year

Robyn Fralick, Ashland University

Regional Coaches of the Year

Krystal Evans, Lincoln Memorial University
Robyn Fralick, Ashland University

Paul Honsinger, Eckerd College
Lane Lord, Pittsburg State University
Ryan McCarthy, University of Alaska-Anchorage
Barbara Stevens, Bentley University
Jessica Strom, California University of Pennsylvania
Jim Turgeon, Colorado State University-Pueblo

NCAA Division III

Pat Summitt Trophy presented to the United States Marine Corps/WBCA National Coach of the Year

G.P. Gromacki, Amherst College

Regional Coaches of the Year

Michele Durand, Ohio Northern University
Nancy Fahey, Washington University
G.P. Gromacki, Amherst College
Karin Harvey, Montclair State University
Scott Hemer, State University College-Geneseo
Michael Miller, Messiah College
Loree Payne, University of Puget Sound
Polly Thomason, University of Texas-Dallas

NAIA

Pat Summitt Trophy presented to the United States Marine Corps/WBCA National Coach of the Year

Dale Neal, Freed-Hardeman University

Regional Coaches of the Year

Richard Aubrey, Milligan College
John Kenger, Midway College
Dale Neal, Freed-Hardeman University
Drew Olson, Concordia University (NE)

Brian Orr, Lewis-Clark State College
Samantha Quigley, University of St. Francis

Junior/Community College

Pat Summitt Trophy presented to the United States Marine Corps/WBCA National Coach of the Year

Kim Muhl, Kirkwood Community College

National Coach of the Year Finalists

Kevin Lynum, Northwest Kansas Technical College
Kim Muhl, Kirkwood Community College
Cayla Petree, South Plains College
Betsy Specketer, Salt Lake Community College

High School

Pat Summitt Trophy presented to the United States Marine Corps/WBCA National Coach of the Year

Rhonda Farney, Georgetown High School, TX

Regional Coaches of the Year

Craig Campbell, West High School, CA
Randy Coffman, Riverdale High School, TN
Colby Davis Patsusek, The Colony High School, TX
Yannick Denson, Legacy Christian Academy, TX
Gene Durden, Buford High School, GA
Terry English, Bishop Miege High School, KS
Rhonda Farney, Georgetown High School, TX
Lisa Kukoda, Manasquan High School, NJ
John Noonan, Ursuline Academy, DE
Jonathon Scribner, St. John's High School, DC
Karen Self, Seton Catholic Preparatory, AZ
Skip Townsend, Argyle High School, TX

United States Marine Corps/WBCA National Coaches of the Year



Geno Auriemma
Connecticut
NCAA Division I



Robyn Fralick
Ashland
NCAA Division II



G.P. Gromacki
Amherst
NCAA Division III



Dale Neal
Freed-Hardeman
NAIA



Kim Muhl
Kirkwood
Jr./Comm. College



Rhonda Farney
Georgetown, TX
High School

RECOGNITION

WBCA Assistant Coaches of the Year



Lance White
Florida State
NCAA Division I



Kari Pickens
Ashland
NCAA Division II



Andrea Ushinski
Virginia Wesleyan
NCAA Division III



Taylor Possail
Columbia College
NAIA



Brittany Christian
NW Kansas Tech
Jr./Comm. College



Jordan Kelley
Regis Jesuit
High School

Carol Eckman Award

Naomi Graves, Springfield College



Naomi Graves
Springfield

WBCA Victory Club

1,000 wins

Tara VanDerveer, Stanford University
(2/3/17)

600 wins

Judy Blinstrub, Babson College (2/8/17)
Jim Brown, Jackson County High School, TN (11/29/16)
Stephanie Findley, Oklahoma Christian University (2/16/17)
Mary Fleig, Millersville University (12/3/16)
Gordy Presnell, Boise State University (12/18/16)

500 wins

Scott Ballard, Winona State University (2/22/17)
Mike McDevitt, Saint Joseph's College of Maine (2/25/17)
Jeff Mittie, Kansas State University (12/4/16)
Kim Mulkey, Baylor University (2/25/17)
Fred Richter, DeSales University (12/5/16)
Sandra Rushing, University of Central Arkansas (2/11/17)
David Smalley, University of Rio Grande (1/24/17)
Darin Spence, Newman University (12/1/16)

400 wins

Chancellor Dugan, Bellarmine University (12/20/16)
Julie Heisey, Seattle Pacific University (12/16/16)
Melissa Irvin, University of the Cumberland (2/2/17)
Tina Martin, University of Delaware (2/15/17)
Stefanie Pemper, United States Naval Academy (2/8/17)
Ronald Rohn, Muhlenberg College (2/1/17)
Marlon Wells, Bishop's High School, CA (12/8/16)

300 wins

Bob Amsberry, Wartburg College (11/19/16)
Karen Barefoot, Old Dominion University (12/9/16)
Tim Barrett, Castleton University (11/15/16)
Joanne Boyle, University of Virginia (12/4/16)

Mary Ellen Burt, Union College (11/15/16)
Jose Fernandez, University of South Florida (1/17/17)
Gabby Lisella, Rowan University (1/11/17)
Michael Llanas, Owens Community College (11/22/16)
Katie Meier, University of Miami (2/2/17)
Karla Nelson, Minnesota State University-Moorhead (2/17/17)
Jeff Soderquist, John Brown University (1/28/17)
Rick Stein, University of Southern Indiana (1/5/17)
Kristy Trn, Shippensburg University (11/12/16)

200 wins

Karen Aston, University of Texas (1/7/17)
Courtney Banghart, Princeton University (2/3/17)
AnnMarie Gilbert, Virginia Union University (2/4/17)
J.D. Gravina, Western Illinois University (1/17/17)
Robin Harmony, Lamar University (2/25/17)
Kim Lusk, St. Thomas Aquinas (2/1/17)
John Margaritis, University of California, Riverside (3/7/17)
Jason Martens, St. Mary's University, TX (1/14/17)
Melissa McFerrin, Memphis University (1/28/17)
Sean Page, Newberry College (2/22/17)
Vic Schaefer, Mississippi State University (3/17/17)

WBCA Assistant Coaches of the Year

NCAA Division I

Lance White, Florida State University

NCAA Division II

Kari Pickens, Ashland University

NCAA Division III

Andrea Ushinski, Virginia Wesleyan College

NAIA

Taylor Possail, Columbia College, MO

Junior/Community College

Brittany Christian, Northwest Kansas Technical College

High School

Jordan Kelley, Regis Jesuit High School, CO

WBCA Thirty Under 30 presented by Marriott Rewards

Shaina Afoa, assistant coach, University of Alaska-Anchorage
Courtney Boyd, associate head coach, University of Wisconsin-Parkside
DeAudra Brown, assistant coach, Seward County Community College
Chelsea Carlisle, associate head coach, University of California-San Diego
Jessica Cavaco, assistant coach, Fairleigh Dickinson University-Florham
Brittany Christian, assistant coach, Northwest Kansas Technical College
Lauren DeFalco, assistant coach, Seton Hall University
Kathryn DeWitt, head coach, Dordt College
Erin Dickerson, associate head coach, Towson University
Megan Dzikas, assistant coach, Saint Leo University
Alexandria Fuller Simmons, assistant coach, University of Mississippi
Danielle Gratton, assistant coach, University of Missouri-Kansas City
Shaun Gunnell, assistant coach, University of Rio Grande
Hana Haden, head, coach, Harris-Stowe State University
Neil Harrow, assistant coach, Troy University
Cody Hartzler, assistant coach, Baldwin Wallace University
Aaron Horn, assistant coach, University of South Dakota
Jacie Hoyt, assistant coach, Kansas State University
Olivia Lett, assistant coach, University of Chicago
Amanda Patton, assistant coach, University of West Florida
April Phillips, associate head coach, Loyola Marymount University
Kris Seigenthaler, assistant coach, Auburn University-Montgomery
Kyle Simmons, assistant coach, University of Sioux Falls
MaryLynn Skarzenski, head coach, Mitchell College
Kylene Spiegel, head coach, Lawrence Technological University

WBCA Thirty Under 30 presented by Marriott Rewards



Shaina Afoa
Alaska-Anchorage



Courtney Boyd
Wisconsin-Parkside



DeAudra Brown
Seward County CC



Chelsea Carlisle
UC San Diego



Jessica Cavaco
Fairleigh Dickinson-Florham



Brittany Christian
NW Kansas Tech



Lauren DeFalco
Seton Hall



Kathryn DeWitt
Dordt College



Erin Dickerson
Towson



Megan Dzikas
Saint Leo



Alexandria Fuller Simmons
Mississippi



Danielle Gratton
Missouri-Kansas City



Shaun Gunnell
Rio Grande



Hana Haden
Harris-Stowe



Neil Harrow
Troy



Cody Hartzler
Baldwin Wallace



Aaron Horn
South Dakota



Jacie Hoyt
Kansas State



Olivia Lett
Chicago



Amanda Patton
West Florida



April Phillips
Loyola Marymount



Kris Seigenthaler
Auburn-Montgomery



Kyle Simmons
Sioux Falls



MaryLynn Skarzinski
Mitchell College



Kylene Spiegel
Lawrence Tech



Kimberly Stephens
Glenville State



Adam Tandez
Northern Illinois



Morgan Toles
Kent State



Cetera Washington
Western Michigan



Caitlin Wetmore
UNC-Greensboro

Kimberly Stephens, head coach, Glenville State College
Adam Tandez, assistant coach, Northern Illinois University
Morgan Toles, assistant coach, Kent State University
Cetera Washington, assistant coach, Western Michigan University
Caitlin Wetmore, assistant coach, University of North Carolina-Greensboro

PLAYER AWARDS

NCAA Division I

Wade Trophy Winner (Player of the Year)

Kelsey Plum, University of Washington

Coaches' All-America Team

Kalani Brown, Baylor University
Napheesa Collier, University of Connecticut
Kelsey Mitchell, Ohio State University
Chantel Osahor, University of Washington
Alexis Peterson, Syracuse University
Kelsey Plum, University of Washington
Katie Lou Samuelson, University of Connecticut
Brianna Turner, University of Notre Dame
Gabby Williams, University of Connecticut
A'ja Wilson, University of South Carolina

Honorable Mention Coaches' All-America

Evelyn Akhator, University of Kentucky; Lindsay Allen, University of Notre Dame; Kristine Anigwe, University of California; Ariel Atkins, University of Texas; Monique Billings, University of California, Los Angeles; Allazia Blockton, Marquette University; Lexie Brown, Duke University; Sophie Brunner, Arizona State University; Tyra Buss, Indiana University; Jordin Canada, University of California, Los Angeles; Alaina Coates, University of South Carolina; Nia Coffey, Northwestern University; Sophie Cunningham, University of Missouri; Nina Davis, Baylor University; Diamond DeShields, University of Tennessee; Asia Durr, University of Louisville; Makayla Epps, University of Kentucky; Feyonda Fitzgerald, Temple University; Katelynn Flaherty, University of Michigan; Rebecca Greenwell, Duke University; Myisha Hines-Allen, University of Louisville; Tori Jankoska, Michigan State University; Jessica January, DePaul University; Brionna Jones, University of Maryland; Kitija Laksa, University of South Florida; Breanna Lewis, Kansas State University; Tynice Martin, West Virginia University; Erica McCall, Stanford University; Brooke McCarty, University of Texas; Arike Ogunbowale, University of Notre Dame; Teniya Page, Penn State University; Leticia Romero, Florida State University; Mercedes Russell, University of Tennessee; Karlie Samuelson, Stanford University; Brooke Schulte, DePaul University; Brittney Sykes, Syracuse University;

2017 WBCA NCAA Division I Coaches' All-America



Kalani Brown
Baylor



Napheesa Collier
Connecticut



Kelsey Mitchell
Ohio State



Chantal Osahor
Washington



Alexis Peterson
Syracuse



Kelsey Plum
Washington



Katie Lou Samuelson
Connecticut



Brianna Turner
Notre Dame



Gabby Williams
Connecticut



A'ja Wilson
South Carolina

2017 WBCA NCAA Division II Coaches' All-America



Mikaela Burgess
Pittsburg State



Sierra Clark
Adephi



Andrea Daugherty
Ashland



Jennifer Gemma
Bentley



Miki Glenn
California, PA



Cassidy Mihalko
California Baptist



Kelly Moten
Emporia State



Taylor Peacocke
Western Washington



Lainia Snyder
Ashland



Autumn Williams
Alaska-Anchorage

Shakayla Thomas, Florida State University; Victoria Vivians, Mississippi State University; Shatori Walker-Kimbrough, University of Maryland; Lizzy Wendell, Drake University; Sydney Wiese, Oregon State University; Ronni Williams, University of Florida.

WBCA Freshman of the Year presented by adidas

Destiny Slocum, University of Maryland

WBCA NCAA Division I Defensive Player of the Year

Gabby Williams, University of Connecticut

Nancy Lieberman Award

Kelsey Plum, University of Washington

Charles T. Stoner Law Scholarship Recipient

Haley Roddy, University of Mount Union

NCAA Division II

Player of the Year

Kelly Moten, Emporia State University

Coaches' All-America Team

Mikaela Burgess, Pittsburg State University
Sierra Clark, Adelphi University



Destiny Slocum
Maryland



Haley Roddy
Mount Union

Andrea Daugherty, Ashland University
Jennifer Gemma, Bentley University
Miki Glenn, California University of Pennsylvania
Cassidy Mihalko, California Baptist University
Kelly Moten, Emporia State University
Taylor Peacocke, Western Washington University
Lainia Snyder, Ashland University
Autumn Williams, University of Alaska-Anchorage

Honorable Mention Coaches' All-America

Ashley Asouzu, Columbus State University; Shakera Barnes, St. Edward's University; Seairra Barrett, California University of Pennsylvania; Tess Bruffey, Lubbock Christian University; Alexis Carter, Columbus State University; Alex Coyne, University of West Florida; Kristen Drogler, Caldwell University; Kiara Etheridge, Saint Mary's University, TX; Katie Fischer, Edinboro University; Sara Galvin, Bellarmine University; Camille Giardina, Florida Southern College; Angela Heintz, Mercyhurst University; Brittany Hernandez, University of Colorado-Colorado Springs; Kelsey Hutchins, University of North Georgia; BreShay Johnson, Lander University; Jamie Johnson, Lewis University; Jasmine Kearse, Limestone College; Jessica Kelliher, Lewis University; Ellen Kett, Simon Fraser University; Stephanie Knauer, Shippensburg University; Sam Knecht, University of Sioux Falls; Madi Mitchell, Valdosta State University; Paige Redmond, University of Central Missouri; Madison Rowland, Queens College; Drew Sannes, Minnesota State

University-Moorhead; Victoria Vine, Eckerd College; Ivy Wallen, University of North Alabama; Sasha Watson, West Texas A&M University; Dana Watts, American International College; Meg Wilson, Simon Fraser University.

NCAA Division III

Player of the Year

Ali Doswell, Amherst College

Coaches' All-America Team

Melissa Baptista, Tufts University
Ali Doswell, Amherst College
Monica Holguin, Trinity University, TX
Kaitlin Langer, University of St. Thomas
Britt Lauck, Ohio Northern University
Alexandra Leslie, University of Rochester
Katie McDaniels, Wheaton College, IL
Lisa Murphy, Carnegie Mellon University
Michela North, Tufts University
Sara Tarbert, Stevenson University

Honorable Mention Coaches' All-America

Cara Adams, State University of New York at Oneonta; Amy Bullimore, Ohio Northern University; Alexis Cheatham, State University of New York at Fredonia; Alyssa Crockett, University of Texas-Dallas; Sara Curl, Pacific University; Amely Del Rosario, Lehman College; Holly Denfeld, Milwaukee School of Engineering; Michelle DeSantis,

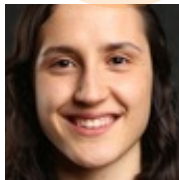
2017 WBCA NCAA Division III Coaches' All-America



Melissa Baptiste
Tufts



Ali Doswell
Amherst



Monica Holguin
Trinity, TX



Kaitlin Langer
St. Thomas



Britt Lauck
Ohio Northern



Alexandra Leslie
Rochester



Katie McDaniels
Wheaton, IL



Lisa Murphy
Carnegie Mellon



Michela North
Tufts



Sara Tarbert
Stevenson

2017 WBCA NAIA Coaches' All-America



Hanah Barnard
Doane College



Taleeah Cross
Freed-Hardeman



Kara Krolicki
Saint Xavier



Claire Lamunu
Vanguard



Jonessa Moore
Shawnee State



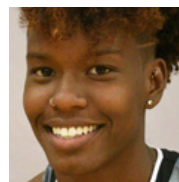
Caelyn Orlandi
Lewis-Clark



Charnelle Reed
St. Francis



Aysia Shellmire
Westmont



Kayla Styles
Lindsey Wilson



Daniela Wallen
Oklahoma City

Catholic University of America; Kelly Donnelly, Skidmore College; Gillian Glackin, Messiah College; Jordan Holmes, Denison University; Madeline Homoly, Washington University; Crystal Jones, LeTourneau University; Kate Kerrigan, Bowdoin College; Alysha Lofton, Albright College; Alyssa McDonough, Fairleigh Dickinson University-Florham; Molly McGraw, Illinois Western University; Mikayla Miller, Gustavus Adolphus College; Miranda Murphy, Wartburg College; Michelle Obach, University of Texas-Tyler; Abby Owings, Thomas More College; Christina Pasaturo, College of Staten Island; Sarah Payomk, University of Scranton; Giovanna Pickering, Babson College; Anyssa Sanchez, Rowan University; Taylor Schmidt, University of Wisconsin-Oshkosh; Katie Sire, Montclair State University; Kit Small, State University of New York at New Paltz; Katie Sommer, Wartburg College; Micah Weaver, Trinity University, TX.

NAIA

Player of the Year

Claire Lamunu, Vanguard University

Coaches' All-America Team

Hanah Barnard, Doane College
Taleeah Cross, Freed-Hardeman University
Kara Krolicki, Saint Xavier University
Claire Lamunu, Vanguard University
Jonessa Moore, Shawnee State University

Caelyn Orlandi, Lewis-Clark State College
Charnelle Reed, University of St. Francis
Aysia Shellmire, Westmont College
Kayla Styles, Lindsey Wilson College
Daniela Wallen, Oklahoma City University

Honorable Mention Coaches' All-America

Madison Clements, Campbellsville University; Bianca Cubello, The Masters College; Kassidy De Jong, Northwestern College; Cassidy Deno, Purdue University Northwest; Natalee Faupel, Montana State University-Northern; Emily Fox, Campbellsville University; Daniela Galindo, Oklahoma City University; Keanna Gary, Indiana Institute of Technology; Di'Mond Jackson, Loyola University New Orleans; Mary Janovich, Concordia University, NE; Philomena Lammers, Concordia University, NE; Kim Mallory, Freed-Hardeman University; Brooke Marcum, University of Rio Grande; Ashlee Marlatt, Columbia College, MO; Miranda Palmer, Huntington University; Kaylee Patton, Keiser University; McKensie Banner Pearson, Bethel University, TN; Macie Spence, Union College; Meghan Temple, Loyola University New Orleans; Imani White, University of St. Mary, KS.

Junior/Community College

Player of the Year

Taylor Emery, Gulf Coast State College

Coaches' All-America Team

Naomi Davenport, Trinity Valley Community College
Taylor Emery, Gulf Coast State College
Japonica James, Tallahassee Community College
Tierra McGowan, Rock Valley College
Velma Mitchell, McLennan Community College
Jeryn Reese, Owens Community College
Lanay Rodney, Monroe Community College
Blaysen Varnadoe, Santa Ana College
Szonja Vukov, Highland Community College, KS
Lawriell Wilson, Tallahassee Community College

Honorable Mention Coaches' All-America

Cesaria Ambrosio, Redlands Community College; Shayla Bennett, Gulf Coast State College; Ariel Bethea, Owens Community College; Tran Brown, Northwest Kansas Technical College; Sierra Green, Monroe Community College; Empress James, Miami-Dade College; Juliet James, Northwest Kansas Technical College; Averyale Joy, Northwest Mississippi Community College; Christalah Lyons, Trinity Valley Community College; La'Neique Nealey, Angelina College; Rachel Slaney, Madison College.

High School

Player of the Year

Megan Walker, Monacan High School, VA

Coaches' All-America

Rellah Boothe, IMG Academy, FL

Chennedy Carter, Mansfield Timberview High School, TX
 Maya Dodson, St. Francis High School, GA
 Dana Evans, West Side High School, IN
 Anastasia Hayes, Riverdale High School, TN
 Michaela Onyenwere, Grandview High School, CO
 Chasity Patterson, North Shore Senior High School, TX
 Megan Walker, Monacan High School, VA
 Evina Westbrook, South Salem High School, OR
 Kiana Williams, Wagner High School, TX

Honorable Mention Coaches' All-America

Deauzya Richards, Cypress Ranch High School, TX
 Janelle Bailey, Providence Day School, NC
 Mikayla Boykin, Clinton High School, NC
 Ayanna Clark, Long Beach Polytechnic High School, CA
 Sidney Cooks, Saint Joseph's High School, WI
 Mikayla Coombs, Wesleyan School, GA
 Rennia Davis, Ribault High School, FL
 Lindsey Duvall, Bullitt East High School, KY
 Andra Espinoza-Hunter, Ossining Senior High School, NY
 Raven Farley-Clark, Queen of Peace High School, NJ
 Lexi Gordan, L.D. Bell High School, TX
 Vivian Gray, Argyle High School, TX
 Loretta Kakala, Manteca High School, CA
 Kasiyahna Kushkituah, St. Francis High School, GA
 Destiny Littleton, Bishop's High School, CA

Ana Llanusa, Choctaw High School, OK
 Alexis Morris, Legacy Christian Academy, TX
 Quannecia Morrison, McEachern High School, GA
 Kianna Smith, Troy High School, CA
 Jade Williams, The Colony High School, TX

MaxPreps/WBCA Players of the Week

Week ending December 5, 2016

Delaney Nwachukwu, Miss Porter's School, CT
 Lucille Westfall, Roane County High School, WV
 Rebecca Arrington, Amelia Academy, VA
 Ava Illig, Cloverleaf High School, OH
 Alana Findley, Fair Grove High School, MO
 Miannah Little, Connally High School, TX
 Bethany Wolph, Valley Christian High School, AZ
 Destiny Littleton, Bishop's High School, CA
 Jordan Cloutier, Gulf Coast High School, FL

Week ending December 11, 2016

Anika Helmke, Berkshire School, MA
 Andra Espinoza-Hunter, Ossining High School, NY
 Megan Walker, Monacan High School, VA
 Dana Evans, Gary West Side High School, IN
 Chloe Dworak, Lincoln Christian School, NE
 Karyn Ford, YES Prep Gulfton, TX
 Bryce Nixon, Arcadia High School, AZ

Shyla Latone, Bonita Vista High School, CA
 Ty'Shemia Ceaser, Quitman County High School, GA

Week ending December 18, 2016

Taniyah Thompson, Hamden High School, CT
 Karson Swogger, Bellwood-Antis High School, PA
 Maya Moyer, Anacostia High School, DC
 Taylor Steele, Highland High School, IN
 Hailee Erickson, Alton High School, MO
 Aaliyah Quintana, Taos High School, NM
 Madison Golla, Desert Vista High School, AZ
 Anna Luce, Mercer Island High School, WA
 Alexandrya Myers, Bayshore Christian School, FL

Week ending January 1, 2017

Angelique Rodriguez, Capital Preparatory Magnet School, CT
 Andra Espinoza-Hunter, Ossining Senior High School, NY
 Robin Gallagher, Athens Drive High School, NC
 Allie Troeckler, Civic Memorial High School, IL
 Taylor Roberts, Classen High School, OK
 Carrie Johnson, Ben Bolt High School, TX
 Janae Gonzales, Sierra Linda High School, AZ
 Shyla Latone, Bonita Vista High School, CA
 Brittany Davis, Greenville High School, GA

Week ending January 8, 2017

Alyssa Casey, Andover High School, MA
 Taylor O'Brien, Plymouth Whitmarsh High School, PA

2017 WBCA Junior/Community College Coaches' All-America



Naomi Davenport
Trinity Valley



Taylor Emery
Gulf Coast



Japonica James
Tallahassee



Tierra McGowan
Rock Valley



Velma Mitchell
McLennan



Jeryn Reese Owens



Lanay Rodney
Monroe



Blaysen Varnadoe
Santa Ana



Szonja Vukov
Highland, KS



Lawriell Wilson
Tallahassee

2017 WBCA High School Coaches' All-America



Rellah Boothe
IMG Academy



Chennedy Carter
Mansfield Timberview



Maya Dodson
St. Francis



Dana Evans
West Side



Anastasia Hayes
Riverdale



Michaela Onyenwere
Grandview



Chasity Patterson
North Shore



Megan Walker
Monacan



Evina Westbrook
South Salem



Kiana Williams
Wagner

Mikayla Boykin, Clinton High School, NC
 Cassidy Crawford, Tipton High School, IN
 Erin Gray, Eufaula High School, OK
 Madie Trainor, Sandia Preparatory School, NM
 Taylor Thompson, The Gregory School, AZ
 Arianna Harper, Legacy High School, CA
 Michaela Edwards, Chelsea High School, AL

Week ending January 15, 2017

McKenna Dale, Edwin O. Smith High School, CT
 Daysiah Smith, Summit Academy, NY
 Drew Freeland, Hidden Valley High School, VA
 Katrina Christian, Crothersville High School, IN
 Myah Selland, Sanborn Central/Woonsocket High School, SD
 Cara Citty, Poetry Community Christian School, TX
 Sarah Barcello, Seton Catholic Preparatory, AZ
 Abria Laue, Grace Brethren School, CA
 Tatyana Wyatt, Columbus High School, GA

Week ending January 22, 2017

Page Brown, Boothbay High School, ME
 Colleena Burdock, Union Educational Complex, WV
 Kendal Moore, Northwood Temple Academy, NC
 Heaven Hamling, Grand Rapids High School, MN
 Paiton Acord, Parkview High School, MO
 Asia Broughton, Victory Preparatory Academy, TX
 Kate Renfro, Horseshoe Bend High School, ID
 Kianna Smith, Troy High School, CA
 Haeli Howard, Marion County High School, KY

Week ending January 29, 2017

McKenna Dale, Edwin O. Smith High School, CT
 Desiree Allen, Neptune High School, NJ
 Emily Maupin, The Covenant School, VA
 Mason VanHouten, Canterbury School, IN
 Hailey Burrow, Gilman City High School, MO
 Shaniyah Buford, Lafayette High School, MS
 Haley Cavinder, Gilbert High School, AZ
 Leanna Watson, El Cajon Valley High School, CA
 Za'nautica Downs, Colquitt County High School, GA

Week ending February 5, 2017

Kayla Mokwuah, Wilbraham & Monson Academy, MA

Holly Edwards, Teays Valley Christian School, WV
 Kayla Jones, Riverside High School, NC
 Dana Evans, Gary West Side High School, IN
 Erika Sage, Freeman High School, SD
 Alexis Jones, Grace Prep, TX
 Megan Timmer, Valley Christian High School, AZ
 Chelsey Gipson, Palisades High School, CA
 Teiyahna Hutchinson, Port St. Joe High School, FL

Week ending February 12, 2017

Savannah Marshall, Westbrook High School, CT
 Halle Herrington, Philipsburg-Osceola High School, PA
 Zaria Wright, Concord First Assembly Academy, NC
 McKenah Peters, Keystone High School, OH
 Shianne Rhorer, Prairie Home High School, MO
 Kelsey Thaxton, Negreet High School, LA
 Taylor Moeaki, American Fork High School, UT
 Keilanei Cooper, Vista Murrieta High School, CA
 River Baldwin, Pleasant Home High School, AL

Week ending February 19, 2017

Maggie Penta, Lowell Catholic High School, MI
 Tori Obenrader, North Clarion County High School, PA
 Mikayla Boykin, Clinton High School, NC
 Coranda Vickerman, Mabel-Canton High School, MN
 Dacey Nelson, Oakland-Craig High School, NE
 Gabby Connally, Brandeis High School, TX
 Hunter Krebs, Sky View High School, UT
 Anna Luce, Mercer Island High School, WA
 Allyson Niece, Simon Kenton High School, KY

Week ending February 26, 2017

Menel Lamadzema, Mystic Valley Charter School, MA
 Jordan Lipes, Eldred Junior-Senior High School, NY
 Anna Vann, Roanoke Rapids High School, NC
 Deja Church, Southfield High School for the Arts and Technology, MI
 Taylor Roberts, Classen High School, OK
 Otashae Burrage, Leake County High School, MS
 Mariah Martin, Alta High School, UT
 Bethany Carstens, Nikiski High School, AK
 Airneisha Gamble, The Rock High School, FL

Week ending March 5, 2017

Anyelina Batista, Pioneer Charter School of Science II, MA
 Desiree Allen, Neptune High School, NJ
 Octavia Hawkins, Thomas Stone High School, MD
 Julia Cianferra, Utica Ford High School, MI
 Bri Rutherford, South Central High School, KA
 Christyn Williams, Central Arkansas Christian School, AR
 Shaylee Gonzales, Mesquite High School, AZ
 Anna Luce, Mercer Island High School, WA
 Erica Haynes-Overton, East Nashville Magnet School, TN

Allstate WBCA Good Works Team®

NCAA Division I

Ivy Atkism, Clemson University
 Angie Davison, University of Northern Iowa
 Britta Hall, Utah Valley University
 Michaela Rasmussen, University of Toledo
 Sandra Udobi, St. John's University

NCAA DII, NCAA DIII, NAIA

Holly Denfeld, Milwaukee School of Engineering
 Haley Joly, St. Edward's University
 Katie Ringdahl, Ave Maria University
 Grace Smith, Kalamazoo College
 Raquel Torres, Metropolitan State University of Denver

TEAM AWARDS

Russell Athletic "Together We R" Team Award

Northwestern University
 State University of New York at Geneseo

WBCA Academic Top 25 Team Honor Roll

(rank, team, head coach, team GPA)

NCAA Division I

1. University of Wisconsin-Green Bay, Kevin Borseth, 3.819
2. Robert Morris University, Charlie Buscaglia, 3.726
3. University of South Dakota, Dawn Plitzuweit, 3.704
4. St. Francis College Brooklyn, John Thurston, 3.689
5. Arizona State University, Charli Turner Thorne, 3.672
6. Miami University (Ohio), Megan Duffy, 3.662

2017 Allstate WBCA Good Works Team®



Ivy Atkism
Clemson



Angie Davison
Northern Iowa



Holly Denfeld
Milwaukee Engineering



Britta Hall
Utah Valley



Haley Joly
St. Edward's



Michaela Rasmussen
Toledo



Katie Ringdahl
Ave Maria



Grace Smith
Kalamazoo



Raquel Torres
Metro State



Sandra Udobi
St. John's

7. Bowling Green State University, Jennifer Roos, 3.625
8. University of Northern Iowa, Tanya Warren, 3.609
9. Drake University, Jennie Baranczyk, 3.600
10. University of North Carolina-Asheville, Brenda Kirkpatrick, 3.597
11. Belmont University, Cameron Newbauer, 3.575
- 12t. Eastern Washington University, Wendy Schuller, 3.562
- 12t. Loyola University Maryland, Joe Logan, 3.562
14. DePaul University, Doug Bruno, 3.561
- 15t. High Point University, DeUnna Hendrix, 3.560
- 15t. Gardner-Webb University, Rick Reeves, 3.560
17. Presbyterian College, Todd Steelman, 3.530
18. St. Bonaventure University, Jesse Fleming, 3.527
19. University of Missouri-Kansas City, Marsha Frese, 3.523
20. University of Wyoming, Joe Legerski, 3.521
21. Eastern Illinois University, Debbie Black, 3.512
- 22t. Fairfield University, Joe Frager, 3.510
- 22t. Southern Illinois University-Carbondale, Cindy Stein, 3.510
- 24t. University of Kentucky, Matthew Mitchell, 3.492
- 24t. Youngstown State University, John Barnes, 3.492

NCAA Division II

1. Emporia State University, Jory Collins, 3.744
2. Michigan Technological University, Kimberly Cameron, 3.736
3. Minnesota State University, Mankato, Emilee Thiesse, 3.728
- 4t. Lubbock Christian University, Steve Gomez, 3.723
- 4t. Maryville University, Collin Lanam, 3.723
6. Seton Hill University, Mark Katariski, 3.722
- 7t. Ohio Dominican University, Lynsey Warren, 3.717
- 7t. Pittsburg State University, Lane Lord, 3.717
9. Nova Southeastern University, LeAnn Freeland, 3.706
10. Grand Valley State University, Mike Williams, 3.669
11. Northwood University, Jeff Curtis, 3.664
12. University of Southern Indiana, Rick Stein, 3.640
13. Fort Hays State University, Tony Hobson, 3.624
14. Southern New Hampshire University, Karen Pinkos, 3.602
15. Rockhurst University, Larry Park, 3.593
16. Augustana University, Dave Krauth, 3.588
17. University of the Sciences, Jackie Hartzell, 3.581
18. Saginaw Valley State University, Jamie Pewinski, 3.576
19. West Texas A&M University, Kristen Mattio, 3.568
20. Minnesota State University Moorhead, Karla Nelson, 3.554
21. Western Oregon University, Holli Howard-Carpenter, 3.539
22. University of Findlay, Jim Wiedie, 3.537
23. Montana State University Billings, Kevin Woodin, 3.529
24. Notre Dame College (Ohio), Katie Hine, 3.527
25. Embry-Riddle University, Lisa Nuxol-Wilson, 3.519

NCAA Division III

1. Emerson College, Bill Gould, 3.673

2. Westminster College (Missouri), Tracey Braden, 3.669
3. University of Pittsburgh-Greensburg, Erin Eaton, 3.647
4. Greenville College, Roy Mulholland, 3.641
5. University of Dubuque, Mark Noll, 3.634
6. New York University, Lauren Hall-Gregory, 3.625
7. MIT, Sonia Raman, 3.618
8. University of Wisconsin-Eau Claire, Tonja Englund, 3.594
9. Western Connecticut State University, Kimberley Rybczyk, 3.593
10. William Smith College, Lindsay Sharman, 3.576
11. Vassar College, Candice Brown, 3.559
12. Ithaca College, Dan Raymond, 3.558
13. Bethel University (Minnesota), Jon Herbrechtsmeyer, 3.552
14. Middlebury College, KJ Krasco, 3.549
15. Carthage College, Tim Bernero, 3.547
16. Marywood University, Tara Macciocco, 3.546
17. Baldwin Wallace University, Cheri Harrer, 3.544
18. Washington and Lee, Christine Clancy, 3.540
19. Houghton College, Alicia Mucher, 3.537
20. Swarthmore College, Renee DeVarney, 3.532
21. Elmhurst College, Tethnie Carrillo, 3.527
22. University of Minnesota, Morris, Tim Grove, 3.526
23. Suffolk University, Ed Leyden, 3.519
24. Case Western Reserve University, Jennifer Reimer, 3.513
25. Thomas More College, Jeff Hans, 3.511

NAIA

1. Purdue University Northwest, Thomas Megyesi, 3.746
2. Mount Marty College, Tom Schlimgen, 3.741
3. St. Ambrose University, Krista Van Hauen, 3.701
4. Montana State University-Northern, Chris Mouat, 3.690
5. Concordia University (Nebraska), Drew Olson, 3.673
6. Grand View University, Garey Smith, 3.659
7. Blue Mountain College, Lavon Driskell, 3.628
8. Indiana Institute of Technology, Jessie Biggs, 3.608
9. University of Rio Grande, David Smalley, 3.568
10. Freed-Hardeman University, Dale Neal, 3.545
11. Saint Xavier University, Bob Hallberg, 3.536
12. Huntington University, Lori Culler, 3.530
13. Columbia College, Jessica Keller, 3.523
14. University of Great Falls, Bill Himmelberg, 3.516
15. Northwestern College, Chris Yaw, 3.490
16. Missouri Valley College, Timm Dixon, 3.486
17. University of St. Francis, Samantha Quigley Smith, 3.483
18. Stephens College, Ray Fron, 3.464
19. Cardinal Stritch University, John Pfaffl, 3.426
20. Campbellsville University, Ginger Colvin, 3.422
21. Concordia University (Michigan), Thad Sankey, 3.412
22. Indiana University East, Tiffani Selhorst, 3.382
23. John Brown University, Jeff Soderquist, 3.376
24. Kansas Wesleyan University, Ryan Showman, 3.370
25. Lyon College, Tracy Stewart-Lange, 3.362

Junior/Community College*

1. Des Moines Area Community College, Steve Krafcsin, 3.539
2. Snow College, Mike Russell, 3.517
3. Northwest College, Janis Beal, 3.510
4. Dawson Community College, Romeo Lagmay, 3.402
5. Umpqua Community College, Dave Stricklin, 3.335
6. Moberly Area Community College, Chad Killinger, 3.329
7. Ventura College, Ned Mircetic, 3.325
8. Illinois Central College, Karrie Redeker, 3.321
9. McHenry County College, Karen Wiley, 3.303
10. Minnesota West Community College, Rosalie Hayenga, 3.261
11. Gulf Coast State College, Roonie Scovel, 3.238
12. Northwest Mississippi Community College, Don Edwards, 3.121
13. Indian River State College, Diana Couch, 3.117
14. Northeast Mississippi Community College, Brenda Mayes, 3.096
15. Frank Phillips College, Eric Rodewald, 3.081
16. Tallahassee Community College, Franqua Bedell, 3.070
17. Ellsworth Community College, Ed Geitz, 3.043

**-Only 17 institutions eligible for nomination in the junior/community college division.*

CONTRIBUTOR AWARDS

Jostens-Berenson Lifetime Achievement Award

Nora Lynn Finch, senior associate commissioner, Atlantic Coast Conference (formerly senior associate director of athletics and senior woman administrator, North Carolina State University; associate head women's basketball coach, North Carolina State University; head women's basketball coach, Wake Forest University and Peace College)



Nora Lynn Finch
Administrator/Coach

WBCA President's Award

Jean Lenti Ponsetto, director of athletics, DePaul University

WBCA Administrator of the Year

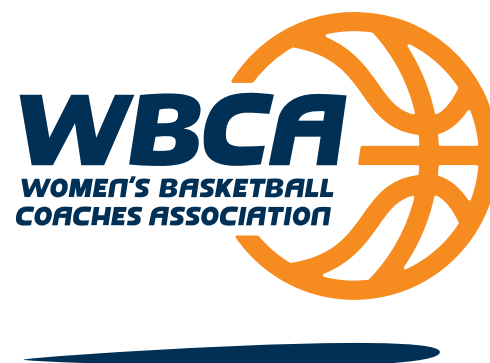
Jean Lenti Ponsetto, director of athletics, DePaul University



Jean Lenti Ponsetto
DePaul

Mel Greenberg Media Award

Ken Neal, producer, Fox Sports South, Fox Sports Southeast and Raycom Sports



4646 Lawrenceville Highway • Lilburn, Georgia 30047
Phone: 770-279-8027 • Fax: 770-279-8473
membership@wbca.org • www.WBCA.org