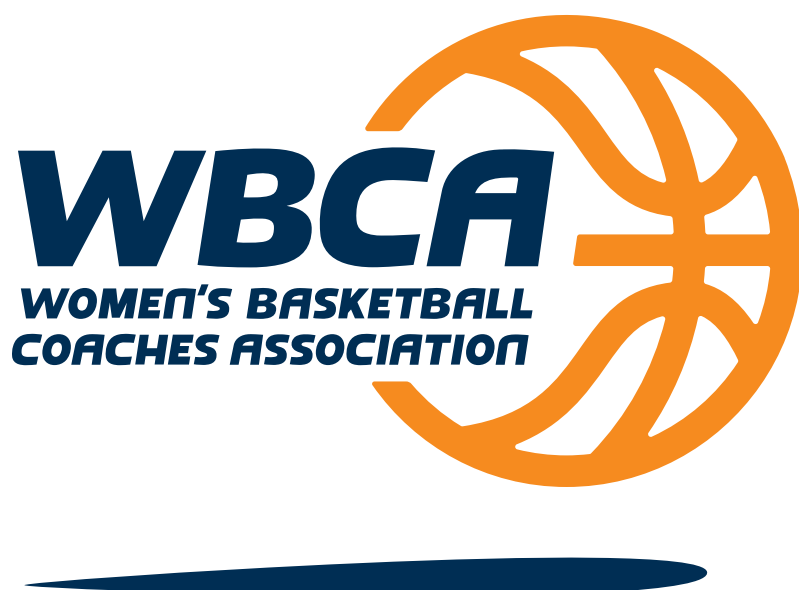


# ANNUAL REPORT



2022-23 Association Year

# TABLE OF CONTENTS

Introduction .....	3
Organization .....	4
Leadership .....	5
Structure.....	6
Membership .....	7
Finances.....	8
Convention .....	9
Connections.....	10
Engagement .....	11
Actions .....	12
Recognition.....	15

# INTRODUCTION

Dear member,

We are pleased to present you with this annual report for the 2022-23 association year. The report summarizes the WBCA's status and activities from Sept. 1, 2022, through Aug. 31, 2023.

The game has never been stronger. We are in a place of great strength, and we have more talent and media exposure than ever before.

As the game continues to strengthen, so does your WBCA. On Saturday, April 1, 2023, active members attending a special legislative session during the WBCA Convention in Dallas voted unanimously to adopt a comprehensive amendment to Article 4 of the association's bylaws. This change shifts the WBCA Board of Directors from a representative board to a functional working corporate board. It empowers the board to identify, recruit and select members with strengths, experience, service and skills to strategically address the issues of the constantly changing landscape of our industry. Board composition does not change...every membership division, scholastic to NCAA Division I retains its voice and vote.

The trailblazers who came before us fought hard to form the WBCA, grow it, and make it relevant. We must be willing to evolve and change as needed to remain so.

Thank you for being a coach, for being a member, and for your continuing support.

Best wishes!

  
Courtney Banghart  
President  
(2023-2025)

  
Cori Close  
Immediate Past President  
(2021-2023)

  
Danielle M. Donehew  
Executive Director



Courtney Banghart



Cori Close



Danielle Donehew

# ORGANIZATION

Our mission, vision, values and objectives define who we are and aspire to be, why we exist, what we believe, and what we do. Our code of ethics establishes standards of conduct and our expectations of each other and ourselves.

## Our Mission

The WBCA leads, serves and unites coaches of women's basketball for the good of our game and those who play it.



## Our Vision

Every coach of women's basketball looks to the WBCA for the support they need to succeed professionally, grow the game, and inspire players to realize their full potential.



## Our Values

Member coaches are stewards of the game, conducting themselves with professionalism and integrity, and putting foremost the safety, welfare and educational interests of the women and girls they coach. The WBCA membership, board of directors and staff conduct themselves in such a manner that the women and girls who play basketball gain self-respect, self-esteem and self-confidence, as well as educational development. These qualities empower women and girls to succeed in life and to become leaders in their professions, communities and society.



## Our Objectives

- We follow both the letter and spirit of the rules and regulations that govern our sport.
- We inform, advise and guide coaches on matters that impact their profession and their sport.
- We offer networking opportunities that allow coaches to connect, encourage and mentor each other.
- We provide educational programming that enables coaches to make themselves better leaders, teachers and role models for the athletes they coach, and improve the quality and popularity of the game.
- We recognize coaches, as well as their athletes and their teams, who excel athletically and academically each year, and honor those who have made lasting contributions to the profession and sport throughout their career.
- We act as the unifying voice of coaches to the organizations that govern the sport at its various levels of competition.



## Code of Ethics

Members conduct themselves professionally, according to the rules, and with civility to players, administrators, game officials, fans and each other. All members must adhere to these ethical and behavioral standards.

### INTEGRITY

- We follow both the letter and spirit of the rules and regulations that govern our sport.
- We watch for actions that could influence other coaches, staff members, athletes and fans to behave in a way that is contrary to these standards.
- We report conduct or suspected conduct that is not in keeping with these standards as well as the rules and regulations that govern our sport.
- We acknowledge that winning is important, but never at the expense of sportsmanship, safety and integrity.

### ATHLETE EXPERIENCE

- We place the physical and mental well-being of the women and girls who play basketball above all else; their health and safety is paramount.
- We maintain strictly professional relationships with the athletes with whom we interact.
- We respect the dignity and individuality of each person with whom we interact and promote a diverse and inclusive culture in which every individual is valued.

### EDUCATION AND EMPOWERMENT

- We teach by example and instill in our athletes the fundamental values of honesty, integrity, respect, civility, self-discipline, personal responsibility and fairness.
- We educate women and girls in a manner that prepares them to succeed in life and become leaders in their communities.
- We strive in all we do to expand athlete experiences and support their academic and educational interests.

### PROFESSIONALISM

- We perform with excellence and good sportsmanship and require the same of each other and our athletes.
- We commit to growing and enhancing the sport of women's basketball and seek opportunities to grow personally and professionally.
- We respect the game, fellow coaches, administrators, game officials and the women and girls we coach and teach.
- We conduct ourselves according to the WBCA values and standards and are accountable for our decisions and actions.



# LEADERSHIP

The association is governed by a board of directors composed of 25 voting officers and directors (the executive director votes only when necessary to break a tie) and a number of nonvoting consultants to the board who represent strategic partners or have expertise of importance to the profession and the sport. The board selects its own members and elects officers from among the sitting directors.

## Board of Directors



Courtney Banghart  
Head Coach  
North Carolina  
President<sup>1</sup>



Kelly Black-Holmes  
Assoc. General Counsel  
Warner Bros. Discovery  
Public Sector



Mike Brandt  
Head Coach  
Minot State  
NCAA Division II



Cori Close  
Head Coach  
UCLA  
Past President<sup>1</sup>



Danielle Donehew  
Executive Director  
WBCA  
Secretary<sup>1,2</sup>



Julie Eddleman  
Chief Commercial Officer  
DoubleVerify  
Public Sector



Jose Fernandez  
Head Coach  
South Florida  
Vice President<sup>1</sup>



Gene Hill  
Head Coach  
Georgia State  
NCAA Division I



Romeo Lagmay  
Head Coach  
Taft  
Two-Year College



Kathy Maguire-Stoudt  
Head Coach  
Rising Sun, MD  
Scholastic



Brian Morehouse  
Head Coach  
Hope  
NCAA Division III<sup>1</sup>



Mike Neighbors  
Head Coach  
Arkansas  
NCAA Division I



Chris Nelson  
Head Coach  
Bethel, TN  
NAIA



Danielle O'Banion  
Head Coach  
Loyola, MD  
NCAA Division I



Cheytoria Penny  
Director of Finance  
Emory  
Treasurer<sup>1</sup>



Julie Roe Lach  
Commissioner  
Horizon League  
DI Commissioners



Carissa Sain  
Head Coach  
Illinois Tech  
NCAA Division III



Dave Slifer  
Head Coach  
Central Missouri  
NCAA Division II



Charmin Smith  
Head Coach  
Cal  
NCAA Division I



Debbie Spander  
Founder/CEO  
Insight Sports Advisors  
Public Sector



Jenn Strawley  
Director of Athletics  
Elon  
Athletic Administrators



Joni Taylor  
Head Coach  
Texas A&M  
NCAA Division I<sup>1</sup>



Jess Turner  
Head Coach  
Skidmore  
NCAA Division III



Steve Yang  
Assistant Coach  
California Baptist  
Assistant Coaches



Stephanie Yelton  
Head Coach  
West Florida  
NCAA Division II<sup>1</sup>



Carol Callan  
Board Member  
FIBA Americas<sup>3</sup>



Liz Hollingworth  
Professor, Iowa  
Faculty Athletic  
Representatives<sup>3</sup>



Lynn Holzman  
Vice President of  
Women's Basketball  
NCAA<sup>3</sup>



Binh Nguyen  
Director, Academic &  
Membership Affairs  
NCAA<sup>3</sup>

1—Member of Executive Committee; 2—Votes only when needed to break a tie; 3—Nonvoting

# STRUCTURE

The board of directors employs an executive director to manage the day-to-day affairs of the association. The executive director also serves as the association's secretary and is a member of the board and executive committee, voting only when necessary to break a tie. The executive director employs a staff to assist with the management of the association's programs and initiatives.

## WBCA Staff



Danielle Donehew  
Executive Director  
ddonehew@wbca.org  
770-279-8027 ext. 122



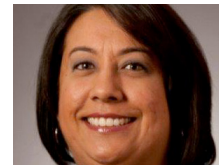
Mary Ellen Gillespie  
Deputy Director  
meg@wbca.org  
770-279-8027 ext. 118



Dana Refling  
Executive Assistant  
drefling@wbca.org  
770-279-8027 ext. 122



Latasha Lewis  
Manager of Marketing  
Communications  
llewis@wbca.org  
770-279-8027 ext. 105



Daniella Trujillo  
Senior Manager of  
Events & Awards  
dtrujillo@wbca.org  
770-279-8027 ext. 110



Jack Watford  
Director of  
Communications  
jwatford@wbca.org  
770-279-8027 ext. 112



Shayla Black  
Manager of Membership  
Associations International  
sblack@wbca.org  
770-279-8027 Prompt 2

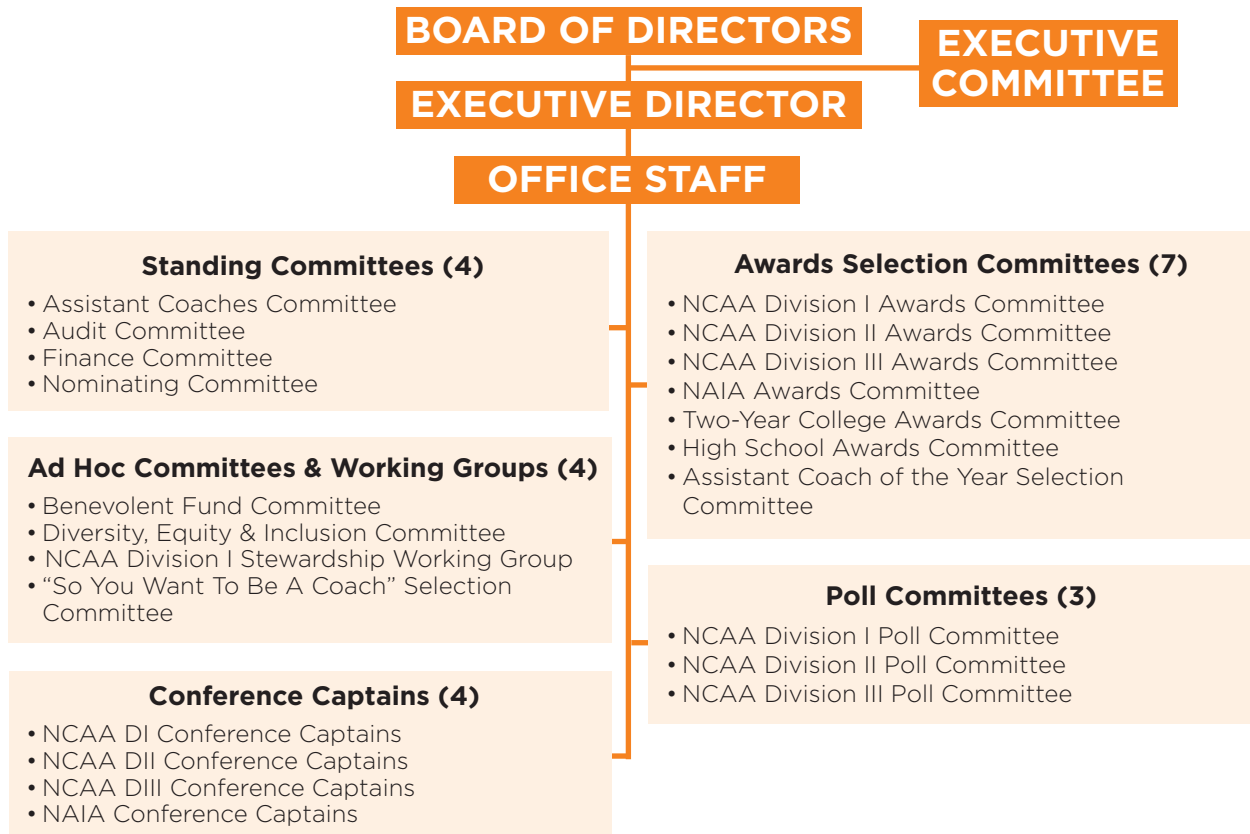


Abby Davis  
Events Manager  
Associations International  
adavis@wbca.org  
859-207-3918



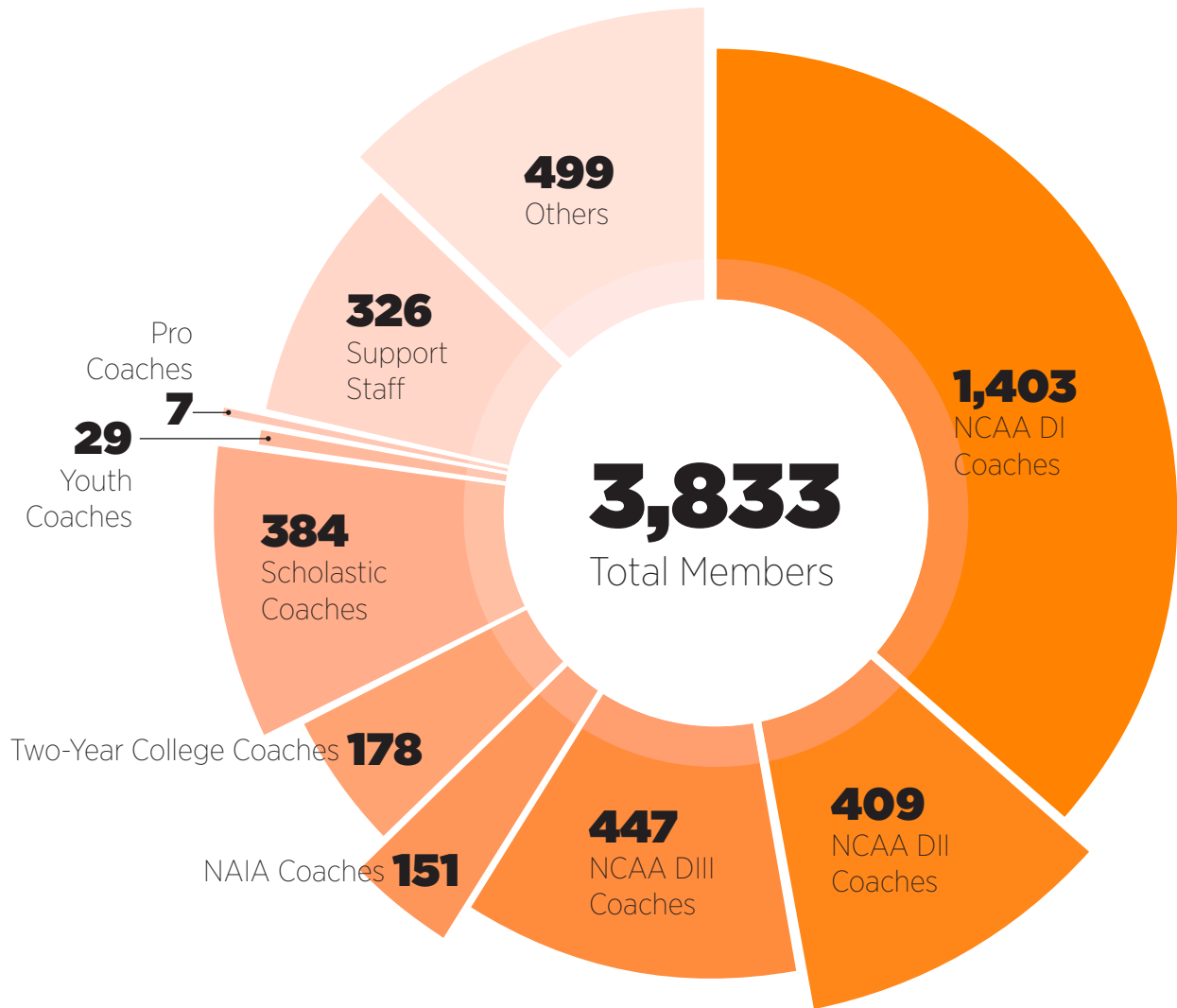
Marcellus Barksdale  
Senior Manager  
Learfield  
marcellus.barksdale@  
learfield.com

## Organizational Structure



# MEMBERSHIP

WBCA membership continued its post-pandemic recovery during the 2022-23 association year, increasing to 3,833 members — an 8-percent increase over the previous year — but still 780 members shy of the pre-pandemic high of 4,613 in 2018-19.



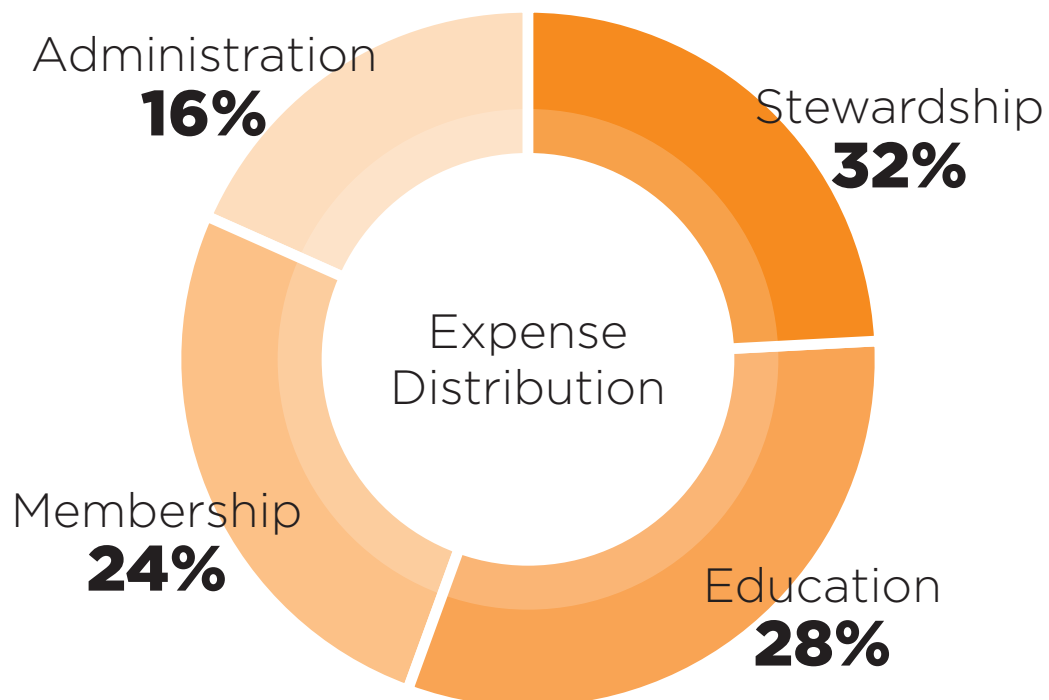
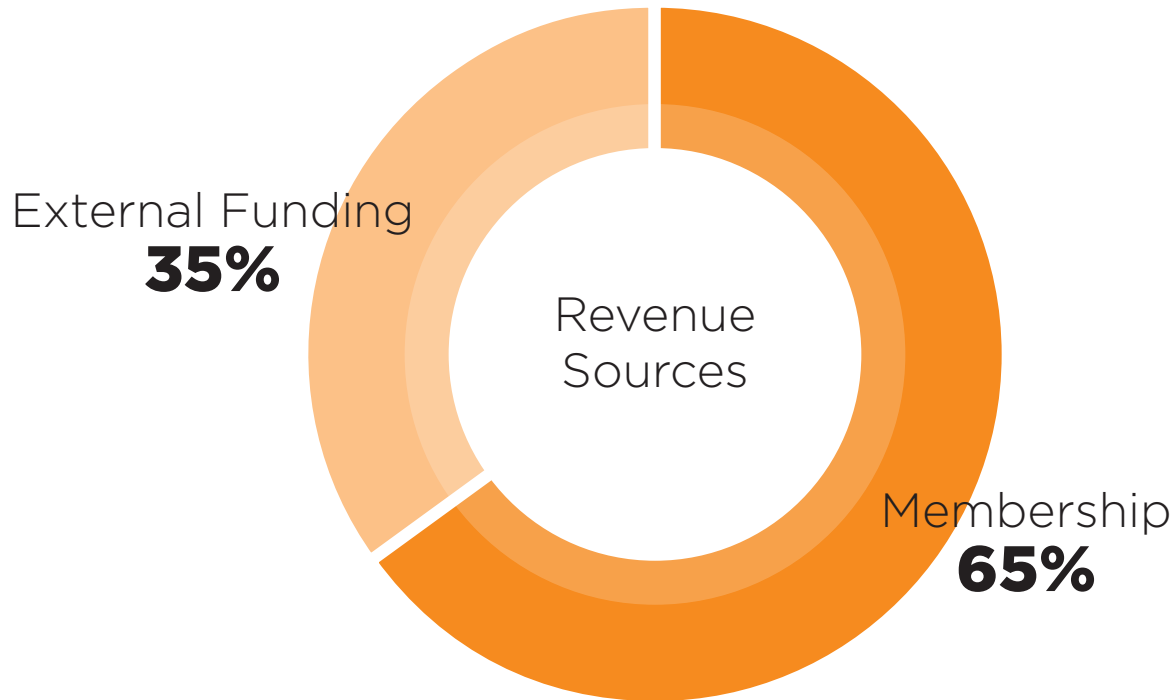
NOTE: Coaches include directors of basketball operations. Scholastic coaches include high school, junior high school, middle school and elementary school. Youth coaches include AAU and club. Support staff includes ADs, SWAs, videographers, grad assistants, managers, etc. Others includes international, inactive, retired coaches; business, strategic partners; athletes, fans, media, etc.).

## 10-YEAR TREND

Year	Members	Year	Members
2022-23	3,833	2017-18	4,273
2021-22	3,547	2016-17	4,226
2020-21	3,243	2015-16	3,957
2019-20	4,252	2014-15	3,977
2018-19	4,613	2013-14	3,912

# FINANCES

The receipt of an early payment comprising one-quarter of the WBCA's corporate sponsor revenue necessitated it be credited to the previous fiscal year. This resulted in a shift "on the books" in the primary revenue source from external funding (35%) to membership (65%) during the 2022-23 association year. Regardless, the WBCA continues to recover financially from the COVID-19 pandemic.





# CONVENTION

Attendance at the 2023 WBCA Convention in Dallas —the second since the COVID-19 pandemic forced the cancellation of the 2020 and 2021 conventions — increased significantly over the 2022 convention in Minneapolis. The 2,583 attendees eclipsed the 2,475 attendance of the association's only other visit to Dallas in 2017. It is the second-highest convention attendance ever, falling just 344 persons shy of the all-time high of 2,927 set in 2019 in Tampa.



## Attendance at Past Conventions

Year	Attendance	Location
2023	2,583	Dallas
2022	2,142	Minneapolis
2021	---	Canceled
2020	---	Canceled
2019	2,927	Tampa
2018	2,357	Columbus
2017	2,475	Dallas
2016	2,197	Indianapolis
2015	2,124	Tampa
2014	2,383	Nashville
2013	2,291	New Orleans
2012	2,181	Denver



Photos by Whitney Young/WBCA



# CONNECTIONS

In addition to the organic networking opportunities at its yearly convention, the WBCA continues to connect members with one another through virtual programs such as the Coach to Coach Mentoring Program and the Beyond the Box peer-to-peer program, as well as the popular in-person Mentoring Madness rotation sessions during convention.

## Coach to Coach Mentoring Program



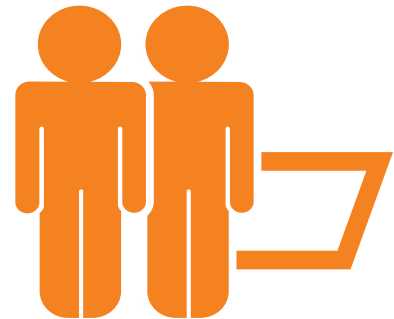
Launched during the 2015-16 membership year, the Coach to Coach Mentoring Program is a traditional, small-group mentoring program designed to bring coaches and staffs together during the basketball season to share ideas, confront challenges and learn from each other's experiences. The program provides a structured platform — monthly conference calls — for organic, open conversation between experienced coaches (who serve as mentors) and those who have recently begun their coaching journeys (mentees).

### 2022-23 Association Year Participation

- Mentors: 33
- Mentees: 96
- Huddles: 32
- Total participants: 129

## Beyond the Box Peer-to-Peer Program

The WBCA launched the new Beyond the Box peer-to-peer program during the 2019-20 membership year for the benefit of seasoned coaches with three or more years of experience in their current roles. Coaches are paired with others at the same level (e.g., head coach with other head coaches, assistant coach with other assistant coaches, etc.) to connect and discuss things such as difficult situations, personal interest topics, coaching journeys and X's and O's.



### 2022-23 Association Year Participation

- Facilitators: 26
- Other: 83
- Huddles: 26
- Total participants: 109

## Mentoring Madness Sessions



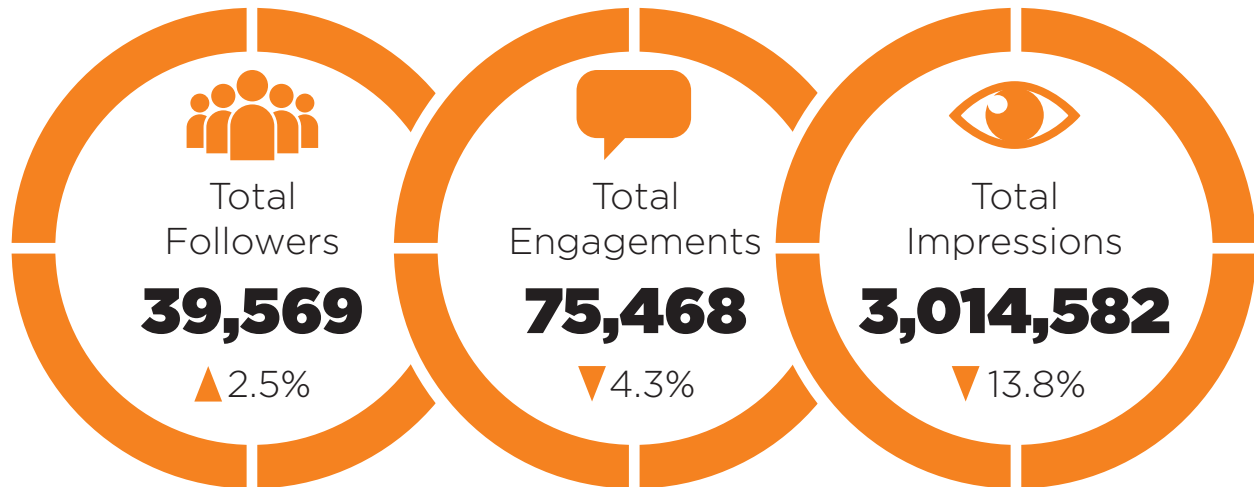
First held during the 2016 WBCA Convention, Mentoring Madness is a fast-paced, small-group mentoring session. Participants rotate from table to table for 20-minute mini sessions during which they discuss pertinent issues with a variety of head coaches. The experience helps to build everyone's professional network and opens the door to a convention full of brainstorming and sharing.

### 2023 Convention Participation

- Mentors: 40
- Participants: 200
- Total participants: 240

# ENGAGEMENT

Total engagements and total impressions on the three main social media platforms declined during the 2022-23 association year. However, the WBCA's engagement rate, which tracks how actively involved our audience is with our content, increased on all three platforms and overall. Engagement rate measures the amount of interaction a piece of content gets compared to how many people simply see it and is a better indicator of brand affinity, credibility, efficacy, and visibility; strength of relationship with the audience; and how well content resonates regardless of how many followers you have.



Although the growth rate slowed, WBCA continued to gain online followers during the 2022-23 association year. Facebook led the way with 1,103 new followers. It was followed closely by Twitter/X with 1,097 new followers.

Engagements include likes, comments, replies, shares and retweets on posts. While total engagements decreased, the WBCA engagement rate increased to **2.5%**, well within the 1 to 5% range, which is considered good.

This is how many times people saw the WBCA brand across all social media platforms. As you might expect, the decrease in total engagements (e.g., retweets and shares) translated into an even larger decline in total impressions.



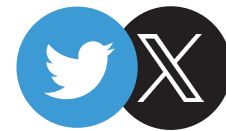
## FACEBOOK

Followers  
**6,429**  
Page Likes  
**5,591**  
Engagements  
**14,129**  
Engagment Rate  
**7.7%**  
Impressions  
**184,239**



## INSTAGRAM

Followers  
**4,983**  
Likes on Posts  
**9,230**  
Engagements  
**9,849**  
Engagment Rate  
**3.8%**  
Impressions  
**256,442**



## TWITTER/X

Followers  
**27,777**  
Likes on Tweets  
**8,030**  
Engagements  
**51,454**  
Engagment Rate  
**2%**  
Impressions  
**2,573,901**

# ACTIONS

The WBCA continued to grow its programs and initiatives by and for members.

## Governance



Active members attending a special legislative session during the 2023 WBCA Convention in Dallas unanimously adopted a comprehensive amendment to Article 4 of WBCA Bylaws that changes the way members of the WBCA Board of Directors are selected. The amendment stipulated that the board through appointments, rather than the membership through elections, will select directors from eligible active members. The board also will appoint officers, other than the secretary (executive director) and treasurer, from among its sitting directors.

The rapidly evolving landscape of college athletics and the uncertainty about who will ultimately become the key decision makers in this space requires the WBCA board in the future to think more strategically, act more deliberately, and rely more heavily on individual board members to engage one on one with leaders at the national and conference levels. This approach is necessary to advance the WBCA's agenda and better ensure its position as an influencer in the decision-making process so that the association can continue to promote and protect the women's basketball coaching profession and the sport itself. A "luck-of-the-draw" popular election of officers and directors is an impediment to the board's ability to do that.

## New Partnerships and Programs



Aflac became the WBCA's newest corporate partner and presenting sponsor of the WBCA Assistant Coaches of the Year awards.

The WBCA partnered with BREAKTHRU Brands, a women-owned, women-led agency on a mission to empower women, and those men who support women, by helping them build authentic, personal brands that break barriers and contribute to a more equitable and inclusive world. BREAKTHRU Brands provides educational programming on personal branding at the WBCA Convention. WBCA members also receive a 10-percent discount on the four-week long BREAKTHRU Brand Unlocks program.



The WBCA launched its newest educational program — the Next Generation Institute — during the 2023 WBCA Convention in Dallas. NGI is for experienced associate/assistant coaches who aspire to become a head coach at the NCAA Division I, II or III levels. It consists of a curriculum that focuses on the CEO attributes a modern-day head coach needs to lead a program and be a problem-solver in today's ever-changing landscape of higher education and the enterprise of intercollegiate athletics.



# ACTIONS

(cont'd)

## Diversity, Equity and Inclusion



The WBCA continued its partnership with RISE, a national nonprofit organization that educates and empowers the sports community to eliminate racial discrimination, champion social justice and improve race relations. RISE conducted an online virtual module on Privilege and Power on Sept. 13, 2022; three in-person sessions during the 2023 WBCA Convention in Dallas; and an online virtual workshop on Microaggressions on June 28.

In its meeting on July 20, the WBCA Board of Directors voted to support Race For Change — a nationwide 5K fundraiser for university diversity, equity and inclusion resources that was originated by UC San Diego — by creating a kit and promoting it to the membership.



The WBCA continues to be an industry leader in efforts to improve gender equity. On July 17, the NCAA announced the creation of the Women's Basketball Invitation Tournament (WBIT) to balance postseason opportunities for women and men. The WBCA is monitoring the progress of the NCAA's negotiations for a new agreement to televise the Division I Women's Basketball Championship and translating that into financial reward for championship success through the payment of monetary units like men's teams are paid.

## Online Education

The WBCA once again partnered with the National Association of Basketball Coaches (NABC) to offer the WBCA-NABC Coaches Forum which features panels of college basketball leaders discussing issues and topics relevant to the sport. There were six Coaches Forum presentations during the 2022-23 association year:

- Sept. 21, 2022 — Media Engagement
- Oct. 26, 2022 — International Recruiting
- Dec. 1, 2022 — Search Firm Engagement
- May 24, 2023 — Summer Camp Best Practices
- June 29, 2023 — Fundraising
- Aug. 24, 2023 — Student Manager Development

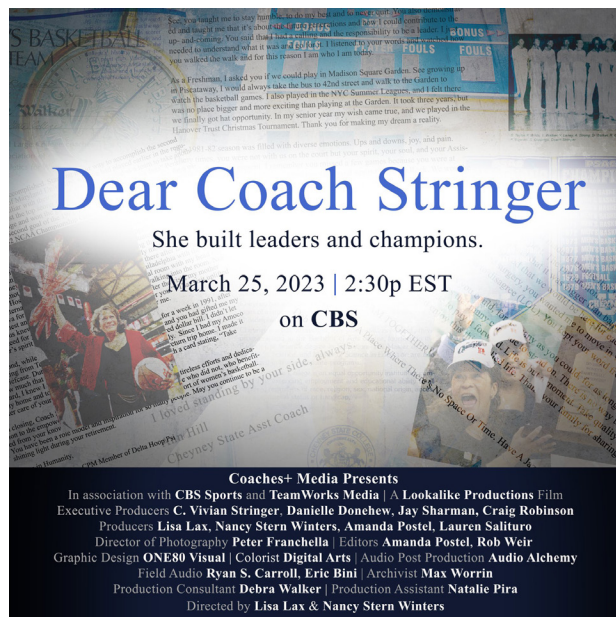


The mental health of student-athletes and coaches remains a hot topic in women's basketball. Former Duke head coach Joanne P. McCallie and Syracuse head coach Felisha Legette-Jack took over the WBCA's Instagram on May 31 and held a live discussion on mental health in the coaching industry. It was a continuation of the session they held at the 2023 WBCA Convention in Dallas.

# ACTIONS

(cont'd)

## Storytelling



Coaches+ Media, the new business partnership between the NABC and WBCA, co-produced *Dear Coach Stringer*, a 30-minute documentary on hall of fame coach C. Vivian Stringer, who in 1982 led Cheyney State University, the first HBCU, to the NCAA Women's Final Four.

*Dear Coach Stringer*, which first aired March 25 on CBS and Paramount+, chronicled the team's groundbreaking 1981-1982 season and highlighted Stringer's legacy through interviews with family, friends, former players and other coaches.

coaches™

Coaches+ also produced *Knew Me When*, a documentary that tells moving backstories about current WNBA stars with unique insights from their college coaches. The 30-minute TV special, debuted Saturday, June 17th on CBS as a lead-in to the Seattle/Dallas WNBA game, and showcased current and former college coaches including Muffet McGraw, Mike Neighbors, and Adia Barnes, along with several current WNBA stars, including A'ja Wilson, Kelsey Plum, Arike Ogunbowale, Courtney Williams, Jackie Young, and more.



## Growing the Game



The University of Louisville women's basketball team and head coach Jeff Walz successfully represented the United States and the WBCA in the second annual *GLOBL JAM* international basketball showcase hosted by Canada Basketball and held July 12-16 in Toronto.

The Cardinals went 3-1 in the tournament, defeating Canada 68-66 in the championship game to win the gold medal.



# RECOGNITION

The WBCA continues to operate the most extensive recognition program of any coaches association. During the 2022-23 association year the WBCA presented 17 different awards or honors to more than 700 individuals and teams.

## 2023 National Women's Basketball Champions



**Congratulations to the 2023 NCAA Division I national champion LSU Tigers and head coach Kim Mulkey.**

### **NCAA Division II**

Ashland University  
Head Coach: Kari Pickens

### **NCAA Division III**

Transylvania University  
Head Coach: Juli Fuls

### **NAIA**

Clarke University  
Head Coach: Courtney Boyd

### **NCCAA Division I**

College of the Ozarks  
Head Coach: Becky Mullis

### **NCCAA Division II**

Champion Christian College  
Head Coach: DeAthony Ellison

### **USCAA Division I**

D'Youville University  
Head Coach: Alison Bouman

### **USCAA Division II**

University of Cincinnati-Clermont  
Head Coach: Ken Lowe

### **NJCAA Division I**

Northwest Florida State College  
Head Coach: Bart Walker

### **NJCAA Division II**

Community College of Baltimore County Essex (MD)  
Head Coach: Mike Seney

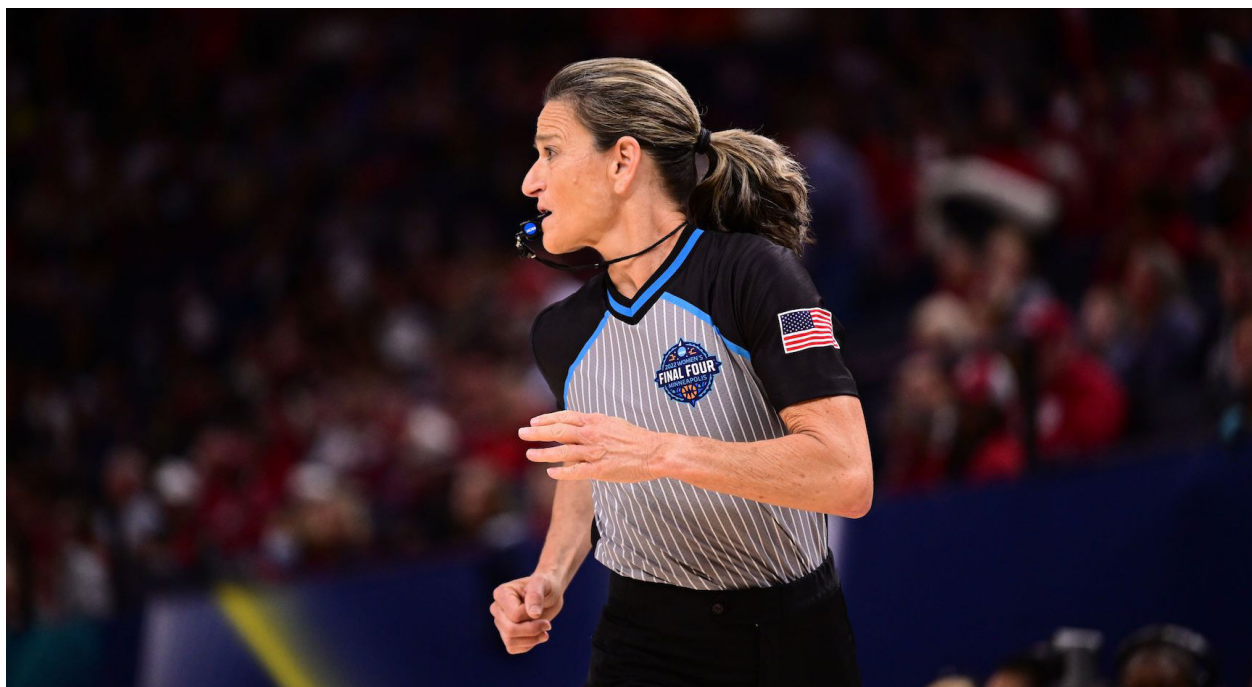
### **NJCAA Division III**

Rochester Community and Technical College (MN)  
Head Coach: Jason Bonde

# RECOGNITION

## ASSOCIATION-WIDE HONORS

### Jostens-Berenson Lifetime Achievement Award



**Dee Kantner**

Game official

### Carol Eckman Integrity in Coaching Award



**Coquese Washington**

Head Coach, Rutgers University



# RECOGNITION

## ASSOCIATION-WIDE HONORS (cont'd)

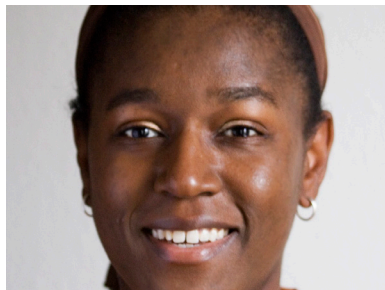
### Administrator of the Year



#### Chris Plonsky

Executive Senior Associate  
Athletics Director, Chief  
of Staff, Senior Woman  
Administrator  
University of Texas

### Mel Greenberg National Media Award



#### Cheryl Coward

Founder  
Hoopfeed.com

### Mel Greenberg Community Media Award



#### Danny Davis

Sportswriter  
Austin (TX) American-  
Statesman



## VICTORY CLUB

Please notify the WBCA when a victory milestone is reached.

### 1100 wins

Jeff Jasper, Pascack Valley High School (NJ),  
1100

### 700 wins

Caryn Jarocki, Highlands Ranch High School  
(CO)  
Judy Blinstrub, Babson College  
Mark Campbell, Union University

### 600 wins

Brenda Frese, University of Maryland  
Buffy Burson, University of North Georgia  
Jeff Mittie, Kansas State University  
Terri Oberge, San Jose City College

### 500 wins

Brandon Schneider, University of Kansas  
Chris Kielsmeier, Cleveland State University  
Jina DeRubbo, Washington & Jefferson  
University  
Joye Lee-McNelis, University of Southern  
Mississippi  
Keith Mondillo, Gwynedd Mercy University

### 400 wins

Carl Mattei, Denver East High School (CO)

Deena Applebury, University of Mary  
Washington  
Jill Nagel, Rock Bridge High School (MO)  
Kirsten Moore, Westmont College  
Kristy Trn, Shippensburg University  
Laurie Kelly, Gustavus Adolphus College  
Matt Borchert, Solano College  
Susie Gardner, Mercer University  
Terry Canova, UMS-Wright Preparatory School  
(AL)

### 300 wins

Alisa Kintner, Widener University  
Amy Williams, University of Nebraska  
Chris Danehower, Leesville Road High School  
(NC)  
Chris Mouat, Montana State-Northern  
Jeff Dow, University of the Incarnate Word  
Kevin Woodin, Montana State University  
Billings

### 200 wins

Anita Howard, Georgia Southern University  
Kristen Gillespie, Illinois State University  
Lindsay Woolley, University of Montana  
Western  
Mark Anger, Chabot College

# RECOGNITION

## ASSOCIATION-WIDE HONORS (cont'd)



Sarah Assante, assistant coach, Dartmouth College  
Katrina Beck, assistant coach, Illinois State University  
KaeLynn Boyd, assistant coach, University of Texas at Arlington  
Alisha Breen, associate head coach, Montana State University Billings  
Chelsie Butler, assistant coach, Youngstown State University  
Khyreed Carter, assistant coach, Syracuse University  
Nina Davis, assistant coach, Middle Tennessee State University  
Symone Denham, assistant coach, Bradley University  
Jillian Dunston, assistant coach, Drexel University  
Sadie Edwards, assistant coach, University of Oregon  
Catherine Harrison, assistant coach, Middlebury College  
Bri Hutchen, assistant coach, University of Delaware  
Jasmine Jenkins, assistant coach, Davidson College  
Abby Jump, associate head coach, University of Memphis  
Jenna Kotas, assistant coach, Ashland University

Isaac Lu, head coach, Western Nebraska Community College  
Olivia Luu, assistant coach, California State Polytechnic University, Pomona  
Ariel Massengale, assistant coach, Southern Illinois University Edwardsville  
Kabrina Merriweather, assistant coach, University of Memphis  
John Montello, assistant coach, Indiana U.-Purdue U. Indianapolis  
Mariya Moore, assistant coach, Saint Mary's College  
Denise Osahor, assistant coach, University of Oklahoma  
Jacob Roark, assistant coach, Faulkner University  
Kylie Russell, head coach, Milligan University  
Ali Sanders, assistant coach, Harvard University  
Allison Spaschak, assistant coach, University of Rochester  
Hannah Varel, assistant coach, Transylvania University  
Jessica Venturelli, head coach, Holmdel High School  
Shelby Wheeler, associate head coach, University of Pikeville  
Jeanne-Marie Wilson, assistant coach, Howard University

# RECOGNITION

## NCAA DIVISION I HONORS

### National Coach of the Year



#### **Dawn Staley**

Head Coach, University of South Carolina

### **Spalding Maggie Dixon** Rookie Coach of the Year



#### **Shawn Poppie**

Head Coach, Univ. of Tennessee-Chattanooga

### **Assistant Coach of the Year** presented by Aflac



#### **Jan Jensen**

Associate Head Coach, University of Iowa



# RECOGNITION

## NCAA DIVISION I HONORS (cont'd)

### Wade Trophy (Player of the Year)



**Caitlin Clark**

University of Iowa

### Defensive Player of the Year



**Cameron Brink**

Stanford University

### Freshman Player of the Year presented by adidas



**Ta'Niya Latson**

Florida State University



# RECOGNITION

## NCAA DIVISION I HONORS (cont'd)



Aliyah Boston, University of South Carolina  
Cameron Brink, Stanford University  
Caitlin Clark, University of Iowa  
Mackenzie Holmes, Indiana University  
Ashley Joens, Iowa State University

Elizabeth Kitley, Virginia Tech University  
Diamond Miller, University of Maryland  
Alissa Pilli, University of Utah  
Angel Reese, Louisiana State University  
Maddy Siegrist, Villanova University

### Honorable Mention

Georgia Amooore, Virginia Tech University  
Sarah Andrews, Baylor University  
Angel Baker, University of Mississippi  
Raegan Beers, Oregon State University  
Grace Berger, Indiana University  
Leigha Brown, University of Michigan  
Kamilla Cardoso, University of South Carolina  
Sonia Citron, University of Notre Dame  
Makira Cook, University of Illinois  
Zia Cooke, University of South Carolina  
Monika Czinano, University of Iowa  
Aaliyah Edwards, University of Connecticut  
Yvonne Ejim, Gonzaga University  
Dyaisha Fair, Syracuse University  
Dulcy Fankam Mendjiadeu, University of South Florida  
Rori Harmon, University of Texas  
McKenna Hofschild, Colorado State University  
Jordan Horston, University of Tennessee  
Abbey Hsu, Columbia University  
Rickeya Jackson, University of Tennessee  
Taiyanna Jackson, University of Kansas

Diamond Johnson, North Carolina State University  
Haley Jones, Stanford University  
Deja Kelly, University of North Carolina  
Gianna Kneepkens, University of Utah  
Ta'Niya Latson, Florida State University  
Charlissee Leger-Walker, Washington State University  
Lou Lopez Sénéchal, University of Connecticut  
Taylor Mikesell, Ohio State University  
Olivia Miles, University of Notre Dame  
Tishara Morehouse, Florida Gulf Coast University  
Alexis Morris, Louisiana State University  
Aneesah Morrow, DePaul University  
Charisma Osborne, UCLA  
Taylor Robertson, University of Oklahoma  
Celeste Taylor, Duke University  
Kaylynne Truong, University of Gonzaga  
Elena Tsineke, University of South Florida  
Alyssa Ustby, University of North Carolina  
Hailey Van Lith, University of Louisville  
Keishana Washington, Drexel University  
Madi Williams, University of Oklahoma

### National Coach of the Year Finalists

Jennie Baranczyk, head coach, University of Oklahoma  
Kenny Brooks, head coach, Virginia Tech University  
Jose Fernandez, head coach, University of South Florida  
Shauna Green, head coach, University of Illinois  
Niele Ivey, head coach, University of Notre Dame

Lindy La Rocque, head coach, University of Nevada  
Teri Moren, head coach, Indiana University  
Kim Mulkey, head coach, Louisiana State University  
Lynne Roberts, head coach, University of Utah  
Dawn Staley, head coach, University of South Carolina

# RECOGNITION

## NCAA DIVISION I HONORS (cont'd)



### ACADEMIC TOP 25 TEAM HONOR ROLL

Rank	Institution	Head Coach	GPA
1	Robert Morris University	Charlie Buscaglia	3.807
2	University at Albany	Colleen Mullen	3.791
3	Northern Illinois University	Lisa Carlsen	3.778
4	University of North Florida	Darrick Gibbs	3.769
5	University of Maine	Amy Vachon	3.766
6	University of Wisconsin-Green Bay	Kevin Borseth	3.758
7	South Dakota State University	Aaron Johnston	3.745
T8	Lipscomb University	Lauren Sumski	3.714
T8	University of Northern Iowa	Tanya Warren	3.714
10	Boise State University	Gordy Presnell	3.702
11	Houston Christian University	Donna Finnie	3.701
12	Youngstown State University	John Barnes	3.695
13	Belmont University	Bart Brooks	3.676
14	Western Illinois University	JD Gravina	3.659
15	Marist College	Brian Giorgis	3.652
16	Drake University	Allison Pohlman	3.628
17	University of Portland	Michael Meek	3.605
18	Campbell University	Ronny Fisher	3.597
19	Purdue University Fort Wayne	Maria Marchesano	3.596
20	University of Washington	Tina Langley	3.585
21	Manhattan College	Heather Vulin	3.576
22	Kent State University	Todd Starkey	3.575
23	University of Missouri	Robin Pingeton	3.571
24	Eastern Illinois University	Matt Bollant	3.569
25	Columbia University	Megan Griffith	3.566

### Special Mention

Drexel University, Amy Mallon, 3.565  
 Abilene Christian University, Julie Goodenough, 3.560  
 University of Toledo, Tricia Cullop, 3.556  
 Indiana University, Teri Moren, 3.553  
 University of Wisconsin-Milwaukee, Kyle Rechlicz, 3.552  
 University of South Dakota, Kayla Karius, 3.551  
 Montana State University, Tricia Binford, 3.547  
 Canisius University, Sahar Nusseibeh, 3.531  
 University of Illinois, Shauna Green, 3.531  
 University of the Pacific, Bradley Davis, 3.524  
 Princeton University, Carla Berube, 3.515  
 Gonzaga University, Lisa Fortier, 3.515  
 University of Akron, Ryan Gensler, 3.503  
 Duke University, Kara Lawson, 3.501  
 Bowling Green State University, Robyn Fralick, 3.501  
 Stonehill College, Trisha Brown, 3.494

Michigan State University, Suzy Merchant, 3.493  
 University of North Dakota, Mallory Bernhard, 3.493  
 New Jersey Institute of Technology, Mike Lane, 3.490  
 Creighton University, Jim Flanery, 3.490  
 University of Denver, Doshia Woods, 3.483  
 Lehigh University, Addie Micir, 3.477  
 Yale University, Dalila Eshe, 3.475  
 Quinnipiac University, Tricia Fabbri, 3.473  
 University of Nebraska, Amy Williams, 3.473  
 University of Richmond, Aaron Roussell, 3.472  
 Santa Clara University, William Carr, 3.468  
 Virginia Tech, Kenny Brooks, 3.466  
 University of Montana, Brian Holsinger, 3.465  
 Tennessee Tech University, Kim Rosamond, 3.460

Continued on page 38

# RECOGNITION

## NCAA DIVISION II HONORS

### National Coach of the Year



#### **Kari Pickens**

Head Coach, Ashland University

### Assistant Coach of the Year presented by Aflac



#### **Jenna Kotas**

Assistant Coach, Ashland University

### Player of the Year



#### **Brooke Olson**

University of Minnesota Duluth

# RECOGNITION

## NCAA DIVISION II HONORS (cont'd)



Hannah Belanger, Truman State University  
Samantha Bowman, Central Washington University  
Breanna Campbell, Glenville State College  
Grace Foster, Lubbock Christian University  
Ariel Jones, Shippensburg University

Sydney Kin, University of Tampa  
Dawnyel Lair, California State University,  
Dominguez Hills  
Brooke Littrell, University of Central Missouri  
Brooke Olson, University of Minnesota Duluth  
Annie Roshak, Ashland University

### Honorable Mention

Lytoya Baker, Le Moyne College  
Kaylee DaMitz-Holt, Drury University  
Aislinn Duffy, Augustana University  
Rana Elhusseini, Edinboro University  
Nicole Flenbaugh, California State University, Los  
Angeles  
Erin Fry, Regis University  
Ashley Ingram, Texas Woman's University  
Jaclyn Jarnot, University of West Florida  
Tre'Zure Jobe, Emporia State University  
Leah Johnson, West Chester University  
Mackenzie Johnson, Young Harris College  
Sawyer Lloyd, Angelo State University  
Caroline Martin, University of North Georgia  
Haley Meinel, Thomas Jefferson University  
Sofia Persson, Eckerd College

Samantha Pirosko, Gannon University  
Haley Schubert, Lee University  
Emily Spitzley, Grand Valley State University  
Abby Spurgin, Hawaii Pacific University  
Ashley Steffek, Colorado School of Mines  
Lacy Stokes, Missouri Southern State University  
Melijah Sullivan, University of Tampa  
Jami Tham, Tusculum University  
Adriana Timberlake, Southern New Hampshire  
University  
Taylor Tomlinson, American International College  
Bryanna Troutman, Wingate University  
Brooke Walling, Western Washington University  
Maggie Whitmore, Bentley University  
Braelyn Wykle, Carson-Newman University  
Kaitlyn Zarycki, Saginaw Valley State University

### National Coach of the Year Finalists

John Bonner, California State University,  
Dominguez Hills  
Carrie Eighmey, University of Nebraska at  
Kearney  
Paul Honsinger, Eckerd College  
Molly Marrin, Regis University

Justin Payne, Georgia Southwestern State  
University  
Kerry Phayre, Assumption University  
Kari Pickens, Ashland University  
Kimberly Stephens, Glenville State College

# RECOGNITION

## NCAA DIVISION II HONORS (cont'd)



### ACADEMIC TOP 25 TEAM HONOR ROLL

Rank	Institution	Head Coach	GPA
1	Upper Iowa University	Justin Maass	3.894
2	Lubbock Christian University	Steve Gomez	3.882
3	University of Montevallo	Gary Van Atta	3.841
4	Ashland University	Kari Pickens	3.826
5	Embry-Riddle Aeronautical Univ. (FL)	Lisa Wilson	3.822
6	Fort Hays State University	Tony Hobson	3.805
7	Rockhurst University	Larry Park	3.776
8	Lee University	Marty Rowe	3.763
9	Mercyhurst University	Brooklyn Kohlheim	3.753
T10	University of Wisconsin Parkside	Jen Conely	3.740
T10	Montana State University Billings	Kevin Woodin	3.740
12	William Jewell College	Jill Slominski	3.736
T13	Northern Michigan University	Casey Thousand	3.723
T13	Fort Lewis College	Taylor Harris	3.723
15	McKendree University	Kari Kerkhoff	3.719
16	Tiffin University	Josh Mason	3.713
17	Truman State University	Theo Dean III	3.707
18	Maryville University	Brita Hand	3.706
19	Kutztown University	Janet Malouf	3.701
T20	Missouri Univ. Science and Technology	Kira Carter	3.695
T20	Southwest Minnesota State University	Tom Webb	3.695
22	University of Central Missouri	David Slifer	3.694
23	Northwest Missouri State	Austin Meyer	3.690
24	Pace University	Carrie Seymour	3.688
25	St. Cloud State University	Lori Fish	3.682

### Special Mention

Thomas Jefferson University, Tom Shirley, 3.674  
 University of Alaska Fairbanks, Amy Donovan, 3.665  
 Texas Woman's University, Beth Jillson, 3.659  
 Seattle Pacific University, Mike Simonson, 3.653  
 Ursuline College, Shannon Sword, 3.648  
 Pittsburg State University, Amanda Davied, 3.644  
 Northwood University, Autumn Haggadone, 3.643  
 St. Thomas Aquinas College, Bill Cleary, 3.642  
 California State Polytechnic University, Pomona, Danelle Bishop, 3.641  
 Wayne State University (MI), Carrie Lohr, 3.632  
 Minot State University, Michael Brandt, 3.630

Point Loma Nazarene University, Charity Elliott, 3.629  
 California State University East Bay, Jenny Thigpin, 3.627  
 Michigan Technological University, Samantha Clayton, 3.616  
 Minnesota State University, Emilee Thiesse, 3.606  
 Oklahoma Baptist University, Bo Overton, 3.600  
 East Stroudsburg University, Stephanie Del Preore, 3.590  
 Wingate University, Ann Hancock, 3.589

Continued on page 38



# RECOGNITION

## NCAA DIVISION III HONORS

### National Coach of the Year



**Lynn Hersey**

Head Coach, Smith College

### Assistant Coach of the Year presented by Aflac



**Amy Endler**

Assistant Coach, Moravian University

### Player of the Year



**Morgan Morrison**

Smith College

# RECOGNITION

## NCAA DIVISION III HONORS (cont'd)



Natalie Bruns, New York University  
Aleah Grundahl, University of Wisconsin-Whitewater  
Madison Kellione, Transylvania University  
Elyce Knudsen, Millikin University  
Bridget Monaghan, University of Scranton

Morgan Morrison, Smith College  
Maggie Russell, Tufts University  
Brynn Serbin, Ohio Northern University  
Anaya Simmons, Christopher Newport University  
Katie Titus, University of Rochester

### Honorable Mention

Maya Arnott, Washington University in St. Louis  
Claire Baguley, Hope College  
Korin Baker, Whitman College  
Anna Barry, Eastern Connecticut State University  
Megan Bauman, Babson College  
Megan Bealer, DeSales University  
Natasha Blizzard, Hardin-Simmons University  
Gabrielle Boggs, Albright College  
Claire Brock, Emory University  
Reilly Campbell, Trinity College (CT)  
Kacie Carollo, University of Wisconsin-Whitewater  
Jordan Carpenter, University of Mary Washington  
Emily Dorn, Ithaca College  
Meghan Dryburgh, Washington & Jefferson College  
Sondra Fan, Christopher Newport University  
Syrira Faraj, The Sage Colleges  
Savannah Feenstra, Hope College  
Brianna Fitzgerald, SUNY at New Paltz  
Meghan Graff, Bates College  
Sam Hourihan, Springfield College

Lauren Hunter, U.S. Merchant Marine Academy  
Grace Hynes, University of Chicago  
Kaci Kranson, University of Scranton  
Maddy Mandyck, Williams College  
Sami Martin, Loras College  
Shannon McCoy, Kean University  
Summer McNulty, Elizabethtown College  
Kaylee Murphy, University of California-Santa Cruz  
Alexa Mustafaj, Middlebury College  
Parris Parmer, Hardin-Simmons University  
Belle Pellecchia, New York University  
Olivia Rangel, Carroll University  
Damaris Rodriguez, New Jersey City University  
Jessie Ruden, University of Wisconsin-Eau Claire  
Anna Sanders, Gustavus Adolphus College  
Mary Schleusner, Washington & Lee University  
Symantha Shackelford, Marymount University  
Mackenzie Szlosek, Gettysburg College  
Gabby Timmer, Calvin University  
Zoë Tomlinson, Colorado College

### National Coach of the Year Finalists

Meg Barber, New York University  
Bill Broderick, Christopher Newport University  
Jenna Cosgrove, Rhode Island College  
Michelle Ferenz, Whitman College  
Julie Fulks, Transylvania University  
Lynn Hersey, Smith College  
Mark Huelsman, Ohio Northern University

Laurie Kelly, Gustavus Adolphus College  
Olivia Lett, Millikin University  
Heather Macy, Greensboro College  
Benjamin O'Brien, University of Scranton  
Jill Pace, Tufts University  
Jessica Turner, Skidmore College

# RECOGNITION

## NCAA DIVISION III HONORS (cont'd)



### ACADEMIC TOP 25 TEAM HONOR ROLL

Rank	Institution	Head Coach	GPA
1	Wartburg College	Bob Amsberry	3.872
2	Millikin University of Decatur	Olivia Lett	3.805
3	Martin Luther College	Dan Gawrisch	3.786
4	Emerson College	Bill Gould	3.766
5	Saint Mary's University of Minnesota	David Foley	3.761
6	Johns Hopkins University	Katherine Bixby	3.753
7	Marywood University	Jen Carleton	3.747
8	St. John Fisher College	Melissa Kuberka	3.745
T9	Clark University	Bridgette Reyes	3.741
T9	Baldwin Wallace University	Cheri Harrer	3.741
11	Trine University	Andy Rang	3.739
12	New York University	Meg Barber	3.735
13	Washington and Lee University	Christine Clancy	3.717
14	Misericordia University	Jason Rhine	3.714
15	Elizabethtown College	Veronica Nolt	3.710
16	Manchester University	Josh Dzurick	3.703
17	University Of Wisconsin-Eau Claire	Tonja Englund	3.698
18	Case Western Reserve University	Jennifer Reimer	3.696
19	Middlebury College	KJ Krasco	3.695
20	Gustavus Adolphus College	Laurie Kelly	3.688
21	Pacific Lutheran University	Lee Aduddell	3.684
22	Simpson College	Brian Niemuth	3.680
23	University of Wisconsin-River Falls	Shelby Lyman	3.668
24	University of Chicago	Maria Williamson	3.667
25	University of Wisconsin-Whitewater	Keri Carollo	3.663

### Special Mention

Skidmore College, Jessica Turner, 3.660  
 John Carroll University, Elizabeth Andrews, 3.660  
 Bethany College, Mikayla Lopez, 3.657  
 University of Wisconsin-Stevens Point, Matt Hockett, 3.657  
 Colorado College, Katherine Menendez, 3.654  
 Bryn Mawr College, Carla Coleman, 3.652  
 Oberlin College, Stephany Dunmyer, 3.650  
 University of Redlands, Rich Murphy, 3.649  
 Massachusetts Institute of Technology, Lucia Robinson-Griggs, 3.647  
 Saint Vincent College, James Petruska, 3.645  
 Gwynedd Mercy University, Keith Mondillo, 3.644

Macalester College, Katie Kollar, 3.634  
 Messiah University, Mike Miller, 3.627  
 SUNY Geneseo, Alyssa Polosky, 3.621  
 Luther College, Amanda Bailey, 3.620  
 Shenandoah University, Melissa Smeltzer-Kraft, 3.619  
 Concordia College, Kim Wagers, 3.614  
 Springfield College, Naomi Graves, 3.613  
 DePauw University, Kristin Huffman, 3.613  
 Westminster College, Talisha Washington, 3.611  
 Husson University, Kissy Walker, 3.609

Continued on page 39



# RECOGNITION

## NAIA HONORS

### National Coach of the Year



#### **Ginger Colvin**

Head Coach, Campbellsville University

### Assistant Coach of the Year presented by Aflac



#### **Caelyn Orlandi**

Assistant Coach, Lewis-Clark State College

### Player of the Year



#### **Ella Collier**

Marian University

# RECOGNITION

## NAIA HONORS (cont'd)



Melissa Akullu, Vanguard University  
Zoie Barth, Thomas More University  
Stefanie Berberabe, Westmont College  
Grace Beyer, University of Health Sciences and  
Pharmacy  
Sandra Cannady, Loyola University

Ella Collier, Marian University  
Ella Skeens, University of Rio Grande  
Kyra Whitaker, Indiana Institute of Technology  
Kaitlynn Wilks, Campbellsville University  
Taya Wilson, Sterling College

### Honorable Mention

Nequoia Adams, Faulkner University  
Kertisa Amos, Texas Wesleyan University  
Claire Austin, Saint Xavier University  
Peyton Banks, Siena Heights University  
Kiara Brown, Menlo College  
Shy Christopher, Mid-America Christian University  
Jenna Cooper-Jackson, Wayland Baptist  
University  
Rebekah Engle, William Carey University  
Brynley Fitzgerald, University of Montana-Western  
Kennedy Hansberry, Loyola University

Courtney Hurst, Thomas More University  
Sha'kyia Parker, Siena Heights University  
Jamie Pickens, Carroll College  
Courtney Pritchett, Campbellsville University  
Faith Ross, Bellevue University  
Zoe Rust, Tabor College  
Kennedy Schlabach, Keiser University  
Karsen Schultz, Sterling College  
Asha Scott, Bellevue University  
Tarah Stephens, John Brown University

### National Coach of the Year Finalists

Jessie Biggs, Indiana Institute of Technology  
Ginger Colvin, Campbellsville University  
Brenita Jackson, Texas Wesleyan University

Kellie Kennedy, Loyola University  
Kirsten Moore, Westmont College  
Tarniesha Scott, Ottawa University (Kansas)

# RECOGNITION

## NAIA HONORS (cont'd)



### ACADEMIC TOP 25 TEAM HONOR ROLL

Rank	Institution	Head Coach	GPA
1	University of Pikeville	Clifton Williams	3.877
2	Hastings College	Jina Douglas	3.808
3	University of Providence	Bill Himmelberg	3.794
4	Tabor College	Shawn Reed	3.783
5	Sterling College	K.C. Bassett	3.759
T6	Northwestern College	Kristin Rotert	3.757
T6	John Brown University	Jeff Soderquist	3.757
8	University of Jamestown	Thad Sankey	3.755
9	Freed-Hardeman University	Joshua Epperson	3.746
10	Grand View University	Jasmine Stohr	3.724
11	University of the Cumberlands	Rick Reeves	3.718
12	Mid-America Christian University	Hannah Moeller	3.716
13	Taylor University	Jody Martinez	3.661
14	Faulkner University	Reed Sutton	3.636
15	Eastern Oregon University	Anji Weissenfluh	3.630
16	Kansas Wesleyan University	Ryan Showman	3.619
17	Grace College	Dan Davis	3.609
18	Carroll College	Rachelle Sayers	3.598
19	Embry-Riddle Aeronautical Univ. (AZ)	Michael Trujillo	3.588
20	Culver-Stockton College	Janette Burgin	3.571
21	Waldorf University	Shawn Chaffin	3.566
22	Lewis-Clark State College	Brian Orr	3.546
23	Columbia College (MO)	James Arnold	3.520
24	Indiana Institute of Technology	Jessica Biggs	3.490
25	University of Rio Grande	David Smalley	3.464

### Special Mention

Westmont College, Kirsten Moore, 3.453  
Warner University, Nikki Jessee, 3.438

Lourdes University, Tandy Bradford, 3.392  
Montana State-Northern, Chris Mouat, 3.344



# RECOGNITION

## TWO-YEAR COLLEGE HONORS

### National Coach of the Year



#### **Jeff Allen**

Head Coach, Collin College

### Assistant Coach of the Year presented by Aflac



#### **Jen Franceson**

Assistant Coach, Kirkwood Community College

### Player of the Year



#### **Alexia Dizeko**

South Georgia Technical College

# RECOGNITION

## TWO-YEAR COLLEGE HONORS (cont'd)



Princess Anderson, Pratt Community College  
 Alexia Dizeko, South Georgia Technical College  
 Fanta Gassama, South Georgia Technical College  
 Deajanae Harvey, Palomar College  
 Waiata Jennings, Collin College

Tasia Jordan, Kirkwood Community College  
 Marie Kenembeni, Angelina College  
 Emily Strachan, Central Maine Community College  
 Shaulana Wagner, Wabash Valley College  
 Sakyia White, Jones College

### Honorable Mention

Alyssa Berry, Hill College  
 En'Dya Buford, Jones College  
 Monique Cavness, Las Positas College  
 Mackenzie Hart, Johnson County Community College  
 Ashley Hawkins, Cypress College  
 Olivia Hayenga, Minnesota West Community & Technical College  
 Nyla Inmon, Kilgore College

Kaila Kelley, Trinity Valley Community College  
 Luana Leite, South Georgia Technical College  
 Ma'Kaila Lewis, Kilgore College  
 Destinee McDowell, Trinity Valley Community College  
 LuLu Salloom, College of the Canyons  
 Meloney Thames, Jones College  
 Alyssia Thorne, Kilgore College  
 Delma Zita, New Mexico Junior College



### ACADEMIC TOP 25 TEAM HONOR ROLL

Rank	Institution	Head Coach	GPA
1	Alpena Community College	Cynthia DeRocher	3.615
2	Solano College	Matt Borchert	3.528
3	New Mexico Junior College	Austin Mefford	3.491
4	Minnesota West Comm & Tech College	Rosalie Hayenga	3.452
5	Highland Community College	Jordon O'Brien	3.381
6	Ventura College	Ned Mircetic	3.337
7	San Jose City College	Terri Oberg-Hearn	3.251
8	Arkansas State University Mid-South	Addie B. Lees	3.178
9	Howard College	John Ishee	3.169
10	Pratt Community College	Eric Rodewald	3.037

Only 10 institutions eligible for ranking in the two-year college division.



# RECOGNITION

## HIGH SCHOOL HONORS

### National Coach of the Year



#### **Melissa Hearlihy**

Head Coach, Harvard-Westlake School (CA)

### Assistant Coach of the Year presented by Aflac



#### **Vanessa Espinoza**

Assistant Coach, Denver East High School (CO)

### Player of the Year



#### **Judea Watkins**

Sierra Canyon School (CA)

# RECOGNITION

## HIGH SCHOOL HONORS (cont'd)



Kamorea Arnold, Germantown High School (WI)  
Brea Cunningham, La Jolla Country Day School (CA)  
Aalyah DelRosario, The Webb School (TN)  
Jadyn Donovan, Sidwell Friends School (DC)  
Milaysia Fulwiley, W. J. Keenan High School (SC)

Hannah Hidalgo, Paul VI High School (NJ)  
Courtney Ogden, Westminster School (GA)  
Taliah Scott, St. John's Country Day School (FL)  
Judea Watkins, Sierra Canyon School (CA)  
Mikaylah Williams, Parkway High School (LA)

### Honorable Mention

Sunaja Agara, Hopkins High School (MN)  
Sofia Bell, Jesuit High School (OR)  
Madison Booker, Germantown High School (MS)  
Zoe Brooks, Saint John Vianney High School (NJ)  
Addyson Brown, Derby Senior High School (KS)  
Essence Cody, Valdosta High School (GA)  
Montaya Dew, Centennial High School (NV)  
Sahnaya Jah, Montverde Academy (FL)  
Kymora Johnson, Saint Annes-Belfield High School (VA)  
Tessa Johnson, Saint Michael Albertville High School (MN)

Ari Long, Valley View High School (CA)  
Amanda Muse, Heritage High School (CA)  
Riley Nelson, Bullis School (MD)  
Laila Reynolds, Shabach Christian Academy (MD)  
Emma Risch, Palm Bay High School (FL)  
Khalil Robinson, Perry High School (AZ)  
Malia Samuels, Garfield High School (WA)  
Ashlynn Shade, La Lumiere School (IN)  
Jada Williams, La Jolla Country Day School (CA)  
Sahara Williams, West High School (IA)

## MaxPreps/WBCA Player of the Week

### Week ending Nov. 28, 2022

Region 1 - N/A  
Region 2 - Arianna Mercado, East New York Family Academy (Brooklyn, N.Y.)  
Region 3 - Ka'Derrah Beason, High Point Academy (Spartanburg, S.C.)  
Region 4 - Shakara Mccline, East St. Louis High School (Ill.)  
Region 5 - Meghan Campise, Crocker High School (Crocker, Mo.)  
Region 6 - Shunteria Anumele, Royal High School (Brookshire, Texas)  
Region 7 - Madelynn Muniz, Boulder Creek High School (Anthem, Ariz.)  
Region 8 - Jillian Nowicki, Academy of Our Lady of Peace (San Diego, Calif.)  
Region 9 - Emely Rodriguez, Horeb Christian School (Hialeah, Fla.)

### Week ending Dec. 4, 2022

Region 1 - Sophie Mahar, Rocky Hill Country Day School (East Greenwich, R.I.)  
Region 2 - Maddison Maynard, Panther Valley High School (Lansford, Pa.)  
Region 3 - Sylvie Jackson, Louisa County High School (Mineral, Va.)  
Region 4 - Zarina Fader, Lawrence Upper High School (Sagamore Hills, Ohio)  
Region 5 - Destiny Buerge, Carl Junction High School (Carl Junction, Mo.)  
Region 6 - Aaliyah Chavez, Monterey High School (Lubbock, Texas)  
Region 7 - Taliyah Henderson, Salpointe Catholic High School (Tucson, Ariz.)  
Region 8 - Akridge (Koko) Solangelei, Mater Dei Catholic High School (Chula Vista, Calif.)  
Region 9 - Avery Chatman, East Lake High School (Tarpon Springs, Fla.)

Continued on page 36

# RECOGNITION

## HIGH SCHOOL HONORS (cont'd)

### MaxPreps/WBCA Player of the Week Continued from page 35

#### Week ending Dec. 11, 2022

Region 1 - Alicia Browder, Neighborhood House Charter School (Dorchester, Minn.)  
Region 2 - Kaitlyn Raguso, Hendrick Hudson High School (Montrose, N.Y.)  
Region 3 - Nyla Brooks, Bishop Ireton High School (Alexandria, Va.)  
Region 4 - Amiyah Reynolds, South Bend Washington High School (South Bend, Ind.)  
Region 5 - Trinity Lutters, Osborne High School (Osborne, Kan.)  
Region 6 - Eliza Reyna, Rio Hondo High School (Rio Hondo, Texas)  
Region 7 - Faith James, Ganado High School (Ganado, Ariz.)  
Region 8 - Chloe Briggs, Ontario Christian High School (Ontario, Calif.)  
Region 9 - Taiylor Williams, Brookstone High School (Columbus, Ga.)

#### Week ending Dec. 18, 2022

Region 1 - Shalyn Smith, Middletown High School (Middletown, Conn.)  
Region 2 - Jenna Muha, Shade-Central High School (Cairnbrook, Pa.)  
Region 3 - Raina McGowens, Wren High School (Piedmont, S.C.)  
Region 4 - Josie Trabel, East Central High School (St. Leon, Ind.)  
Region 5 - Chloe Hanel, Clarkson/Leigh High School (Clarkson, Neb.)  
Region 6 - Madilynn Vuncannon, Walnut High School (Walnut, Miss.)  
Region 7 - Lauren Olsen, Douglas High School (Douglas, Wyo.)  
Region 8 - Ellie Marble, La Conner High School (La Conner, Wash.)  
Region 9 - MJ Simmons, Community High School (Unionville, Tenn.)

#### Week ending Jan. 8, 2023

Region 1 - Sarah Berube, Lincoln School (Providence, R.I.)  
Region 2 - Devyn Quigley, Manchester Township High School (Lakehurst, N.J.)  
Region 3 - Zamareya Jones, North Pitt High School (Bethel, N.C.)  
Region 4 - Gloria Brewer, Greencastle High School (Greencastle, Ind.)  
Region 5 - Keziah Lofton, Bethany High School (Bethany, Okla.)  
Region 6 - Maegan Riebel, Geneva School of Boerne (Boerne, Texas)  
Region 7 - Adriana Hernandez, Bourgade Catholic High School (Phoenix, Ariz.)

Region 8 - Aaliyah Stanton, Rancho Christian School (Temecula, Calif.)  
Region 9 - ZaKiyah Johnson, Sacred Heart Academy (Louisville, Ky.)

#### Week ending Jan. 22, 2023

Region 1 - Lauren Bousquet, Moses Brown School (Providence, R.I.)  
Region 2 - Hadleigh McGoskey, Ravenswood High School (Ravenswood, W.V.)  
Region 3 - Jordin Richardson, Nansemond River High School (Suffolk, Va.)  
Region 4 - Xamiya Walton, Butler College Prep (Chicago, Ill.)  
Region 5 - E'Niyah Holmes, Calvin High School (Calvin, Okla.)  
Region 6 - Bella Hines, Eldorado High School (Albuquerque, N.M.)  
Region 7 - Natalie Scherzer, Chaparral High School (Scottsdale, Ariz.)  
Region 8 - Ari Long, Valley View High School (Moreno Valley, Calif.)  
Region 9 - Taliah Scott, St. Johns Country Day School (Orange Park, Fla.)

#### Week ending Jan. 29, 2023

Region 1 - Abigail Bradbury, Valley Regional High School (Deep River, Conn.)  
Region 2 - Devyn Quigley, Manchester Township High School (Lakehurst, N.J.)  
Region 3 - Brecken Snotherly, Eastern Randolph High School (Ramseur, N.C.)  
Region 4 - Shelby Bowman, Biggsville West Central High School (Biggsville, Ill.)  
Region 5 - Raegan McCowan, Lebanon High School (Lebanon, Mo.)  
Region 6 - Emily Kate Jones, First Baptist Academy (Dallas, Texas)  
Region 7 - Tatiana Harness, Leading Edge Academy Gilbert Early College (Gilbert, Ariz.)  
Region 8 - Elliott Schwartz, John Adams Academy (El Dorado Hills, Calif.)  
Region 9 - Breanna Ortega, Anclote High School (Holiday, Fla.)

#### Week ending Feb. 5, 2023

Region 1 - Sarah Berube, Lincoln School (Providence, R.I.)  
Region 2 - Gretchen Dolan, Williamsville South High School (Williamsville, N.Y.)  
Region 3 - J'Niya Weaver, Mt. Zion Preparatory Academy (Lanham, Md.)  
Region 4 - Ava Weber, Corydon Central High School (Corydon, Ind.)  
Region 5 - Alissa Brabec, St. Mary's High School (O'Neill, Neb.)

Continued on page 37



# RECOGNITION

## HIGH SCHOOL HONORS (cont'd)

---

### MaxPreps/WBCA Player of the Week Continued from page 36

Region 6 - Eryn Brown, Istrouma High School (Baton Rouge, La.)

Region 7 - Jerzy Robinson, Desert Vista High School (Phoenix, Ariz.)

Region 8 - Jada Zarembka, California School for the Deaf-Riverside (Riverside, Calif.)

Region 9 - Zoe Tennell, The Villages Charter School (The Villages, Fla.)

Week ending Feb. 12, 2023

Region 1 - Audrey MacKie, Oceanside High School (Rockland, Maine)

Region 2 - Senaya Parker, Samuel Fels High School (Philadelphia, Pa.)

Region 3 - Zamareya Jones, North Pitt High School (Bethel, N.C.)

Region 4 - Leah French, Engadine High School (Engadine, Mich.)

Region 5 - India Willis, Macks Creek High School (Macks Creek, Mo.)

Region 6 - Madison Hurta, San Marcos HomeSchool (San Marcos, Texas.)

Region 7 - Aiyanna Perkins, McClintock High School (Tempe, Ariz.)

Region 8 - Nia Rogers, Redwood Christian School (San Lorenzo, Calif.)

Region 9 - Madi Lewis, Columbia Academy (Columbia, Tenn.)

Week ending Feb. 26, 2023

Region 1 - Catherine Antwi, Lowell Catholic High School (Lowell, Mass.)

Region 2 - Kiyomi McMiller, Life Center Academy (Burlington, N.J.)

Region 3 - Ka'Nyah O'Neal, Southside High School (Chocowinity, N.C.)

Region 4 - Maddyn Greenway, Providence Academy (Plymouth, Minn.)

Region 5 - Marlie Wright, Greenfield High School (Greenfield, Mo.)

Region 6 - Saniya Burks, Rice High School (Rice, Texas)

Region 7 - La'la Baldwin, Draper American Preparatory Academy (Draper, Utah)

Region 8 - Layla Faught, Las Vegas High School (Las Vegas, N.V.)

Region 9 - Madi Meade, Floyd Central High School (Eastern, Kent.)

Week ending March 5, 2023

Region 1 - Jenny Lopez, Lyman Memorial High School (Lebanon, Conn.)

Region 2 - Jenna Muha, Shade-Central City High School (Cairnbrook, Pa.)

Region 3 - Kymora "Mo" Johnson, St. Anne's-Belfield School (Charlottesville, Va.)

Region 4 - Adelyn Moore, Caro High School (Caro, Mich.)

Region 5 - Halle Dolliver, Malcolm High School (Malcolm, Neb.)

Region 6 - Sydney Benally, Sandia High School (Albuquerque, N.M.)

Region 7 - Kailey Woolston, Lone Peak High School (Highland, Utah)

Region 8 - Lauren Harris, Faith Christian High School (Yuba City, Calif.)

Region 9 - ZaKiyah Johnson, Sacred Heart Academy (Louisville, Ky.)



# RECOGNITION

---

## NCAA Division I Academic Top 25 Continued from page 22

Cleveland State University, Chris Kielsmeier, 3.459  
University of Alabama at Birmingham, Randy Norton, 3.458  
Western Michigan University, Shane Clipfell, 3.450  
Indiana State University, Chad Killinger, 3.448  
Fresno State University, Jaime White, 3.418  
University of Wyoming, Heather Ezell, 3.417  
University of Iowa, Lisa Bluder, 3.416  
University of St. Thomas, Ruth Sinn, 3.415  
Oregon State University, Scott Rueck, 3.414  
Grand Canyon University, Molly Miller, 3.411  
University of Kansas, Brandon Schneider, 3.409  
University of the Incarnate Word, Jeff Dow, 3.400  
University of Illinois Chicago, Ashleen Bracey, 3.396  
Binghamton University, Bethann Ord, 3.394  
California State University, Northridge, Carlene Mitchell, 3.394  
Valparaiso University, Mary Evans, 3.389  
University of Alabama, Kristy Curry, 3.379  
American University, Tiffany Coll, 3.375  
DePaul University, Douglas Bruno, 3.372  
Arizona State University, Natasha Adair, 3.367  
University of Colorado, JR Payne, 3.358  
Washington State University, Kamie Ethridge, 3.356  
Saint Joseph's University, Cindy Griffin, 3.348  
Oklahoma State University, Jacie Hoyt, 3.332  
University of Notre Dame, Niele Ivey, 3.331  
University of Arizona, Adia Barnes, 3.331  
Portland State University, Chelsey Gregg, 3.331  
Western Carolina University, Kiley Hill, 3.318  
Rice University, Lindsay Edmonds, 3.316  
Kansas State University, Jeff Mittie, 3.297

Louisiana Tech University, Brooke Stoebr, 3.285  
Liberty University, Carey Green, 3.280  
La Salle University, Mountain MacGillivray, 3.277  
University of Minnesota, Lindsay Whalen, 3.275  
Fairfield University, Carly Thibault, 3.271  
University of Kentucky, Cami Moore, 3.267  
UCLA, Cori Close, 3.263  
UC Santa Barbara, Bonnie Henrickson, 3.261  
University of Southern California, Lindsay Gottlieb, 3.250  
University of Evansville, Robyn Scherr-Wells, 3.241  
Sacred Heart University, Jessica Mannetti, 3.237  
Niagara University, Jada Pierce, 3.217  
University of San Diego, Cindy Fisher, 3.214  
UNLV, Lindy La Rocque, 3.206  
Georgia State University, Gene Hill, 3.204  
California State University Bakersfield, Greg McCall, 3.199  
University of California, Berkeley, Charmin Smith, 3.182  
University of Tulsa, Angie Nelp, 3.181  
Longwood University, Erika Lang-Montgomery, 3.179  
Hofstra University, Danielle Santos Atkinson, 3.163  
Eastern Washington University, Joddie Gleason, 3.147  
University of Central Florida, Sytia Messer, 3.134  
University of Mississippi, Yolett McPhee-McCuin, 3.132  
Seton Hall University, Anthony Bozzella, 3.127  
Ohio State University, Kevin McGuff, 3.099  
Florida State University, Brooke Wyckoff, 3.090  
Brigham Young University, Amber Whiting, 3.077  
University of Tennessee, Kellie Harper, 3.048  
University of Virginia, Amaka Agugua-Hamilton, 3.041  
Texas Tech University, Krista Gerlich, 3.021

---

## NCAA Division II Academic Top 25 Continued from page 25

Seton Hill University, Mark Katarski, 3.577  
Winona State University, Ana Wurtz, 3.568  
Adelphi University, Sade Jackson, 3.563  
Columbus State University, Matt Houser, 3.552  
West Liberty University, Kyle Cooper, 3.547  
Florida Southern College, Megan Dzikas, 3.547  
Harding University, Tim Kirby, 3.520  
Northwest Nazarene University, Steve Steele, 3.518  
Southern New Hampshire University, Karen Pinkos, 3.516  
D'Youville University, Alison Bouman, 3.502  
University of Hawaii at Hilo, David Kaneshiro, 3.484  
Western Washington University, Carmen Dolfo, 3.455  
Biola University, Alan Nakamura, 3.454  
Gannon University, Cleve Wright, 3.437  
Carson-Newman University, Michael Mincey, 3.432

West Chester University, Kiera Wooden, 3.393  
Coker University, Melissa DeVore, 3.383  
Davenport University, Shonda Sanders, 3.375  
Union University, Mark Campbell, 3.360  
Bentley University, Carolyn White, 3.359  
California State University Monterey Bay, Sarah Hopkins-Chery, 3.340  
Azusa Pacific University, T.J. Hardeman, 3.315  
Assumption University, Kerry Phayre, 3.298  
Chowan University, Lenise Stallings, 3.273  
California State University, Dominguez Hills, John Bonner, 3.224  
University of West Florida, Stephanie Yelton, 3.215  
California State University, Los Angeles, Torino Johnson, 3.129  
California State University, San Bernardino, Casandra Renno, 3.108  
University of North Carolina at Pembroke, John Haskins, 3.077  
Converse University, Samantha Davidson, 3.065

# RECOGNITION

## **NCAA Division III Academic Top 25** **Continued from page 28**

Carthage College, Megan Jones, 3.598  
Marymount University, Margaret White, 3.596  
Emory University, Misha Jackson, 3.595  
St Catherine University, Donald Mulhern, 3.595  
University of Wisconsin-Oshkosh, Brad Fischer, 3.594  
Catholic University, Matt Donohue, 3.591  
Yeshiva University, Bill Zatulskis, 3.588  
Moravian University, Mary Beth Spirk, 3.586  
Calvin University, Mark Christner, 3.583  
Emmanuel College (MA), Andy Yosinoff, 3.579  
Illinois Wesleyan University, Mia Smith, 3.571  
College of St. Scholastica, Jason Schmitz, 3.571  
Claremont-Mudd-Scripps Colleges, Chanel Murchison, 3.562  
Hope College, Brian Morehouse, 3.559  
King's College, Caitlin Hadzimichalis, 3.551  
Tufts University, Jill Pace, 3.543  
University of Dubuque, Justin Smith, 3.541  
University of Scranton, Ben O'Brien, 3.534  
Haverford College, Grace Elliott, 3.526  
SUNY New Paltz, James Seward, 3.516  
University of Mount Union, Suzanne Venet Pietz, 3.516  
DeSales University, Fred Richter, 3.514  
Albion College, Doreen Carden, 3.511  
Marietta College, Kole Vivian, 3.507  
Westminster College, Rosanne Scott, 3.504  
St. Norbert College, Amanda Perry, 3.504  
St. Olaf College, Kelly Mahlum, 3.503  
Illinois Institute of Technology, Carissa Sain, 3.501  
Ripon College, Lauren Busalacchi, 3.501  
Hardin-Simmons University, Kendra Whitehead, 3.500  
Russell Sage College, Allison Coleman, 3.500  
Dickinson College, Aby Diop, 3.498

Illinois College, Jennifer McCormick, 3.489  
Kalamazoo College, Katie Miller, 3.478  
Denison University, Maureen Hirt, 3.474  
Kenyon College, Mary Corbett, 3.473  
Sarah Lawrence College, Bradley Alexander, 3.470  
York College (PA), Betsy Witman, 3.468  
Chapman University, Carol Jue, 3.467  
Edgewood College, Chaia Huff, 3.462  
Central College, Moran Lonning, 3.456  
University of Minnesota, Morris, Tim Grove, 3.447  
William Paterson University, Erin Monahan, 3.440  
Susquehanna University, Gabrielle Holko, 3.411  
Otterbein University, Diana Noles, 3.408  
Suffolk University, Ed Leyden, 3.407  
Christopher Newport University, Bill Broderick, 3.394  
Kean University, Mandy King, 3.391  
Worcester State University, Karen Tessmer, 3.383  
Willamette University, Peg Swadener, 3.365  
Arcadia University, Jackie Hartzell, 3.349  
Roger Williams University, Kelly Thompson, 3.347  
Swarthmore College, Dawn Grant, 3.329  
Western Connecticut State University, Kimberley Rybczyk, 3.328  
Anderson University, Jon Gin, 3.328  
Saint Mary's College (IN), Melissa Makielski, 3.327  
Penn College, Britni Mohny, 3.316  
Franklin & Marshall College, Brianna Spector, 3.310  
University of Mary Washington, Deena Applebury, 3.308  
Gallaudet University, Stephanie Stevens, 3.307  
Fredonia State University, Sarah Cartmill, 3.304  
Capital University, Camille McPherson, 3.291  
University of Lynchburg, Allison Nichols, 3.238  
McDaniel College, Christin Gowan, 3.228  
St. Mary's College of Maryland, Brittney Kenney, 3.220  
Gettysburg College, Nate Davis, 3.172





Women's Basketball Coaches Association  
4646 Lawrenceville Highway | Lilburn, GA 30047  
770-279-8027 | [membership@wbca.org](mailto:membership@wbca.org) | [www.WBCA.org](http://www.WBCA.org)